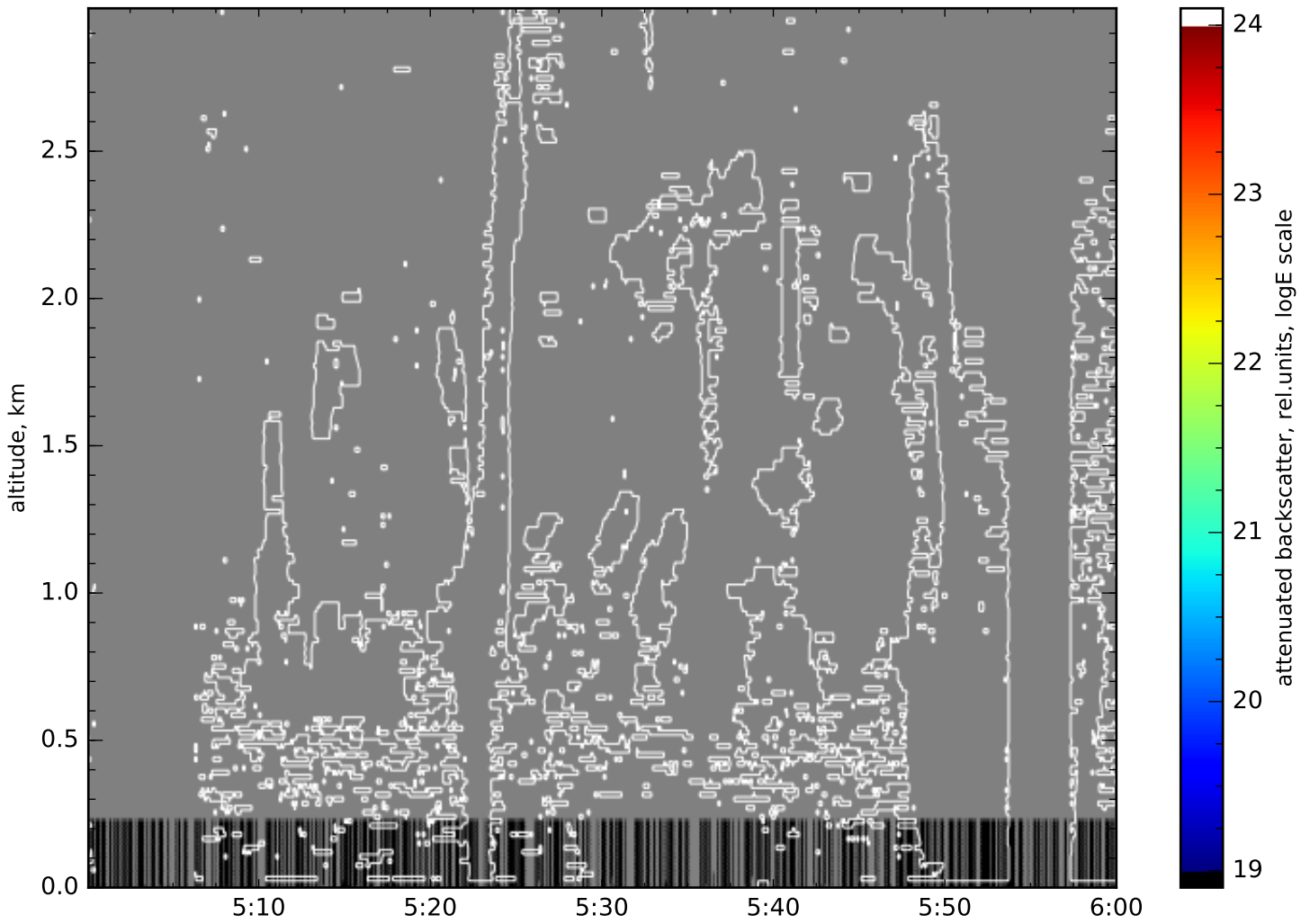
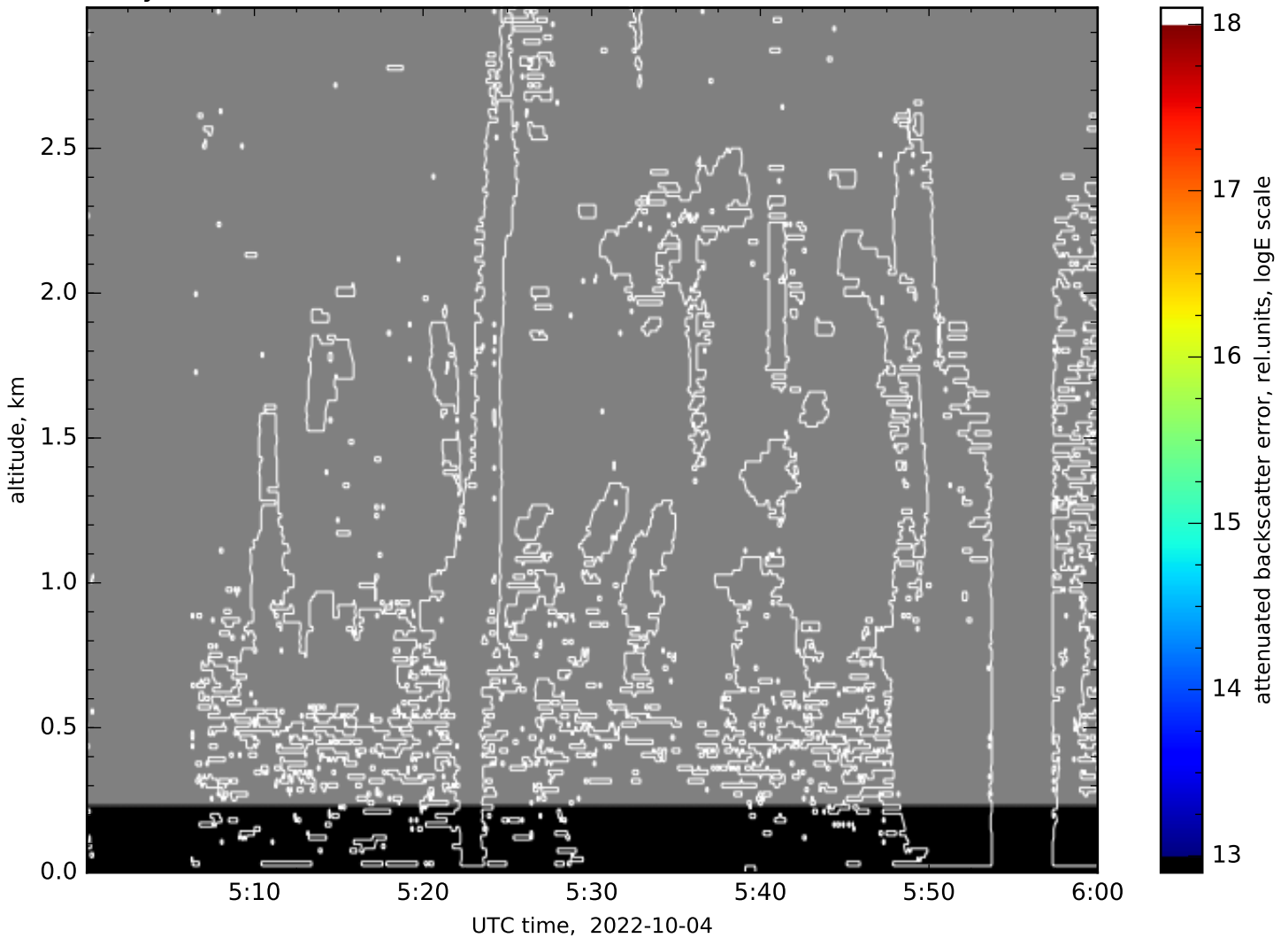


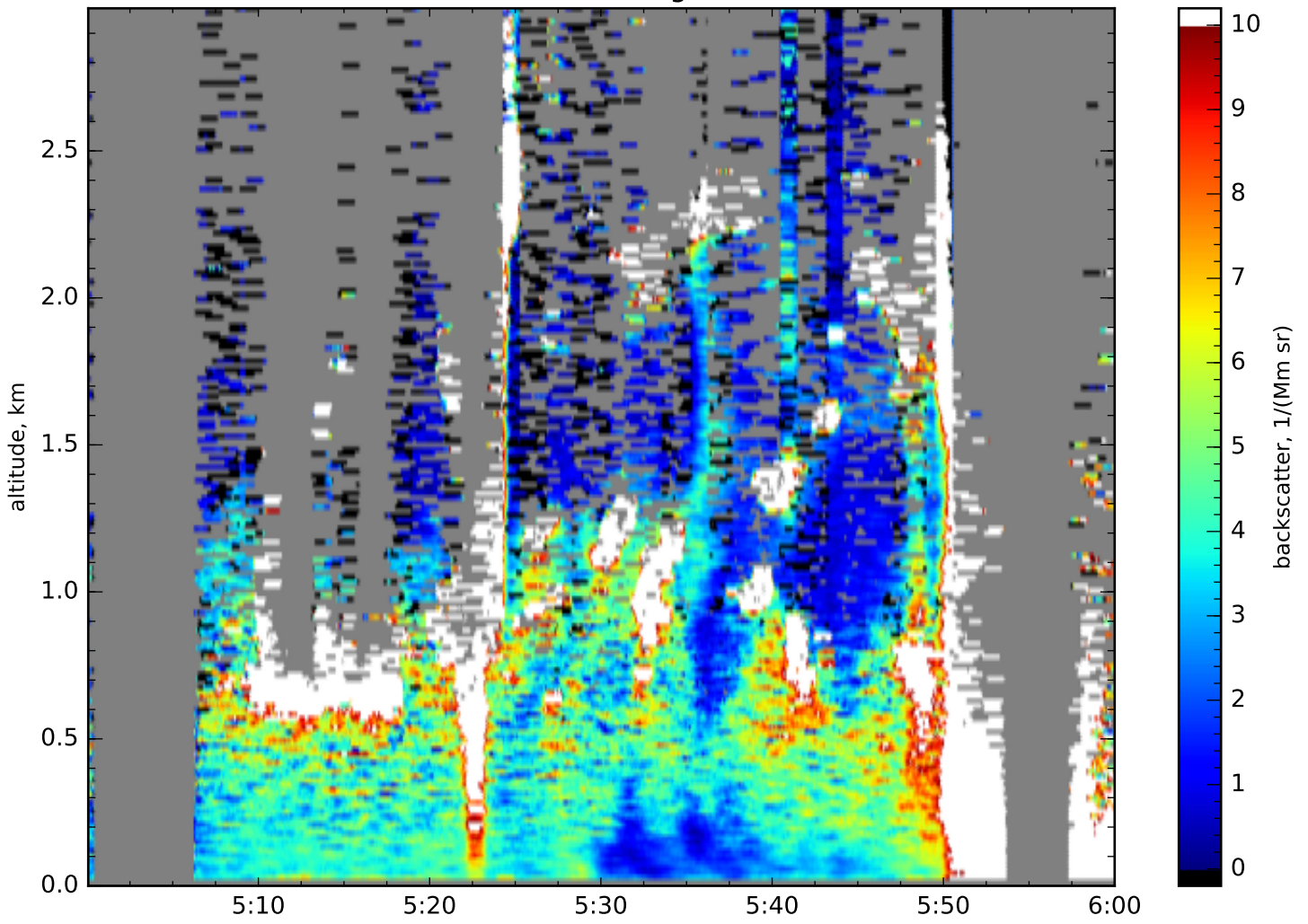
Attenuated backscatter, 1064nm, channel: elastic, far, res.: 4s, 15m



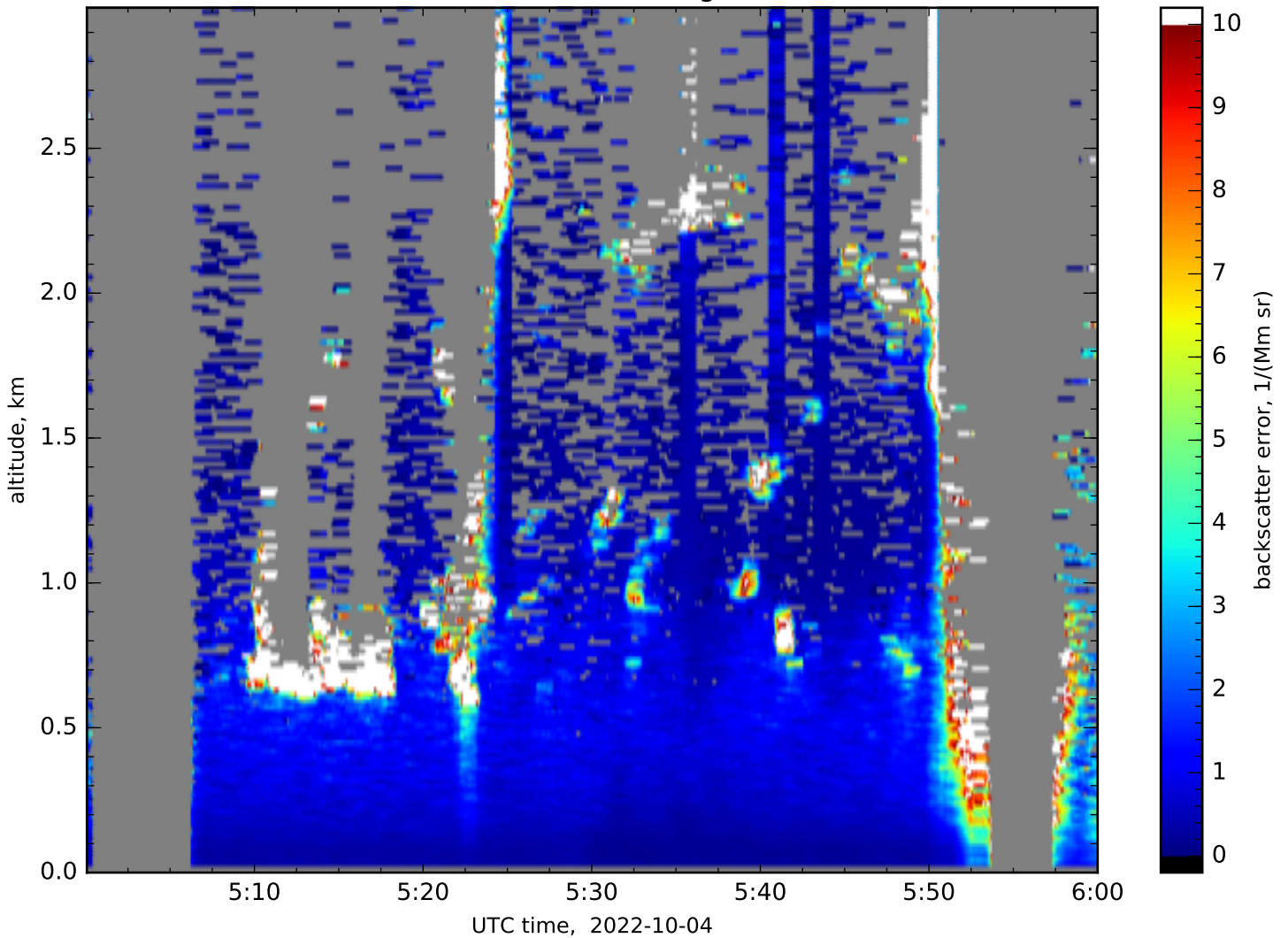
Accuracy (one standard deviation), 1064nm, channel: elastic, far, res.: 4s, 15m



Particle backscatter, 532nm, glue, res.: 60s, 15m

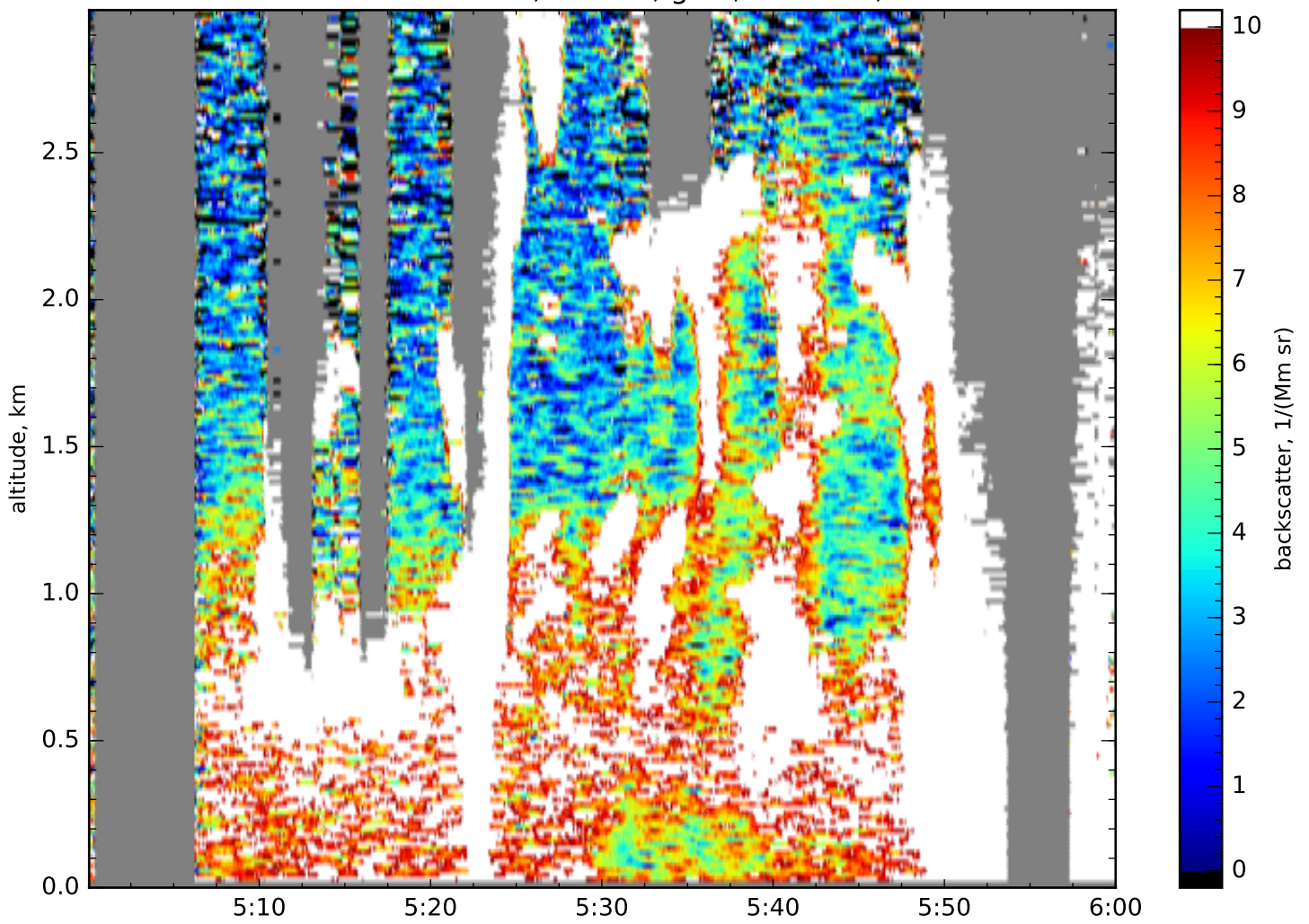


Particle backscatter error, 532nm, glue, res.: 60s, 15m

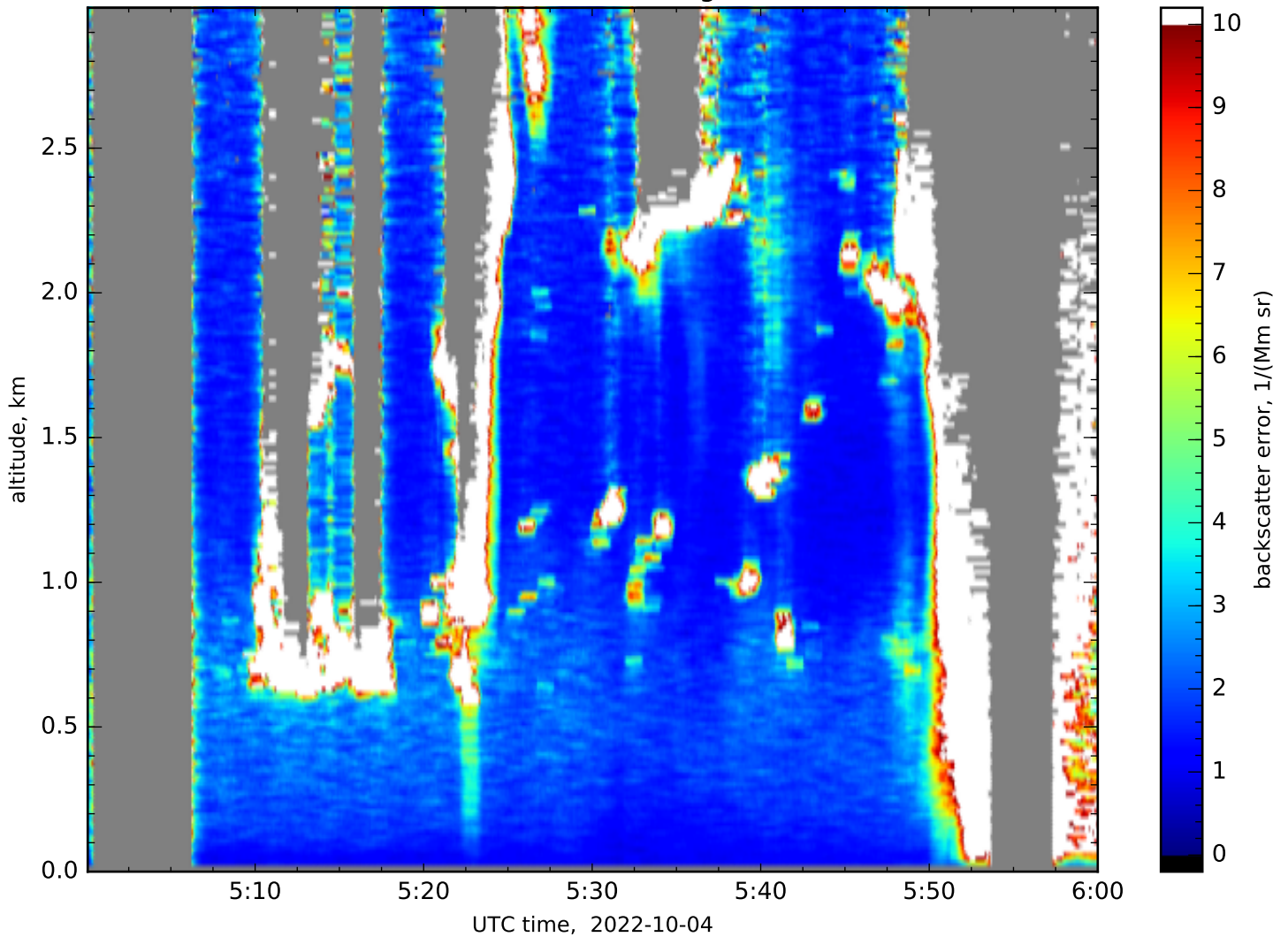


UTC time, 2022-10-04

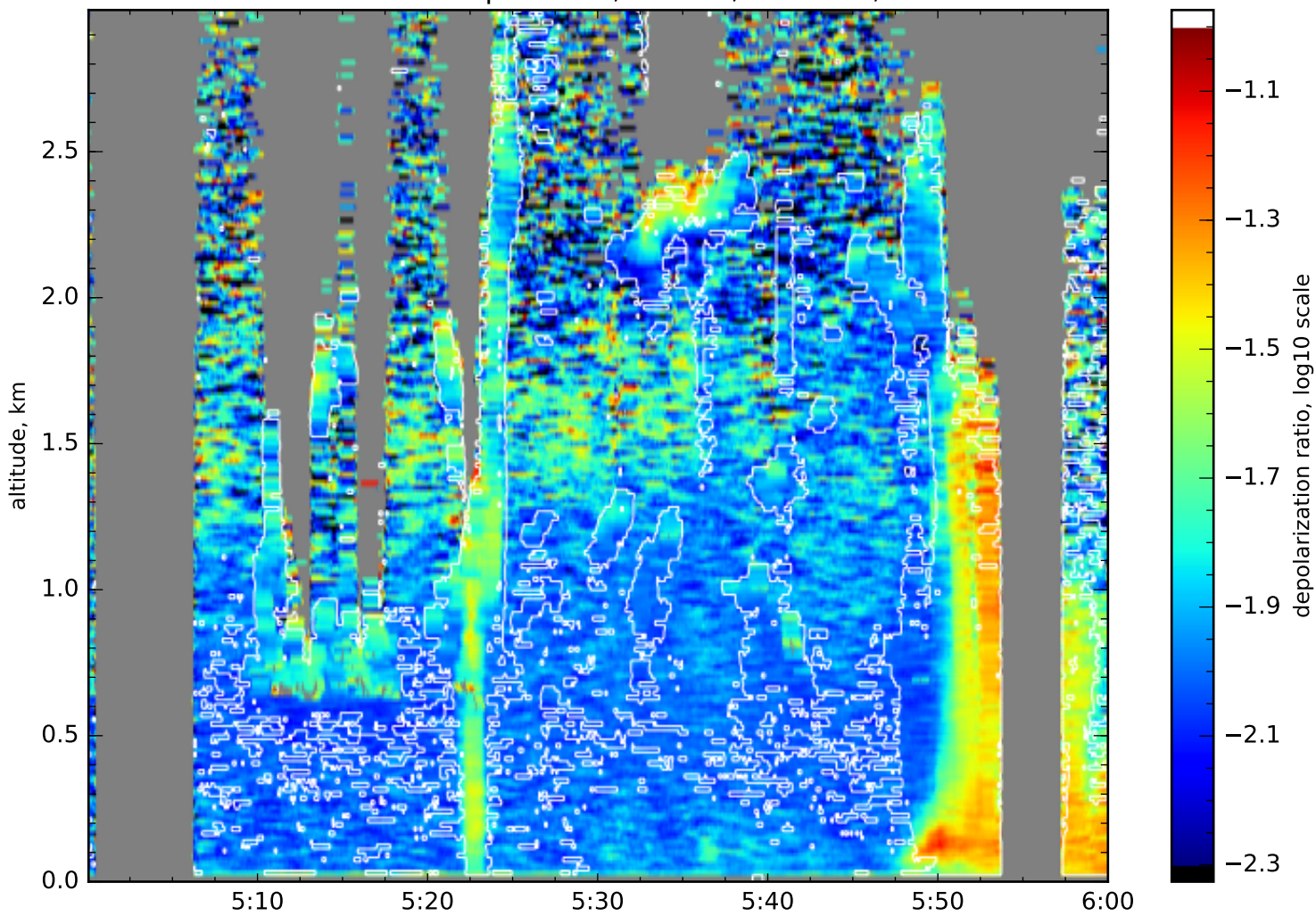
Particle backscatter, 355nm, glue, res.: 60s, 15m



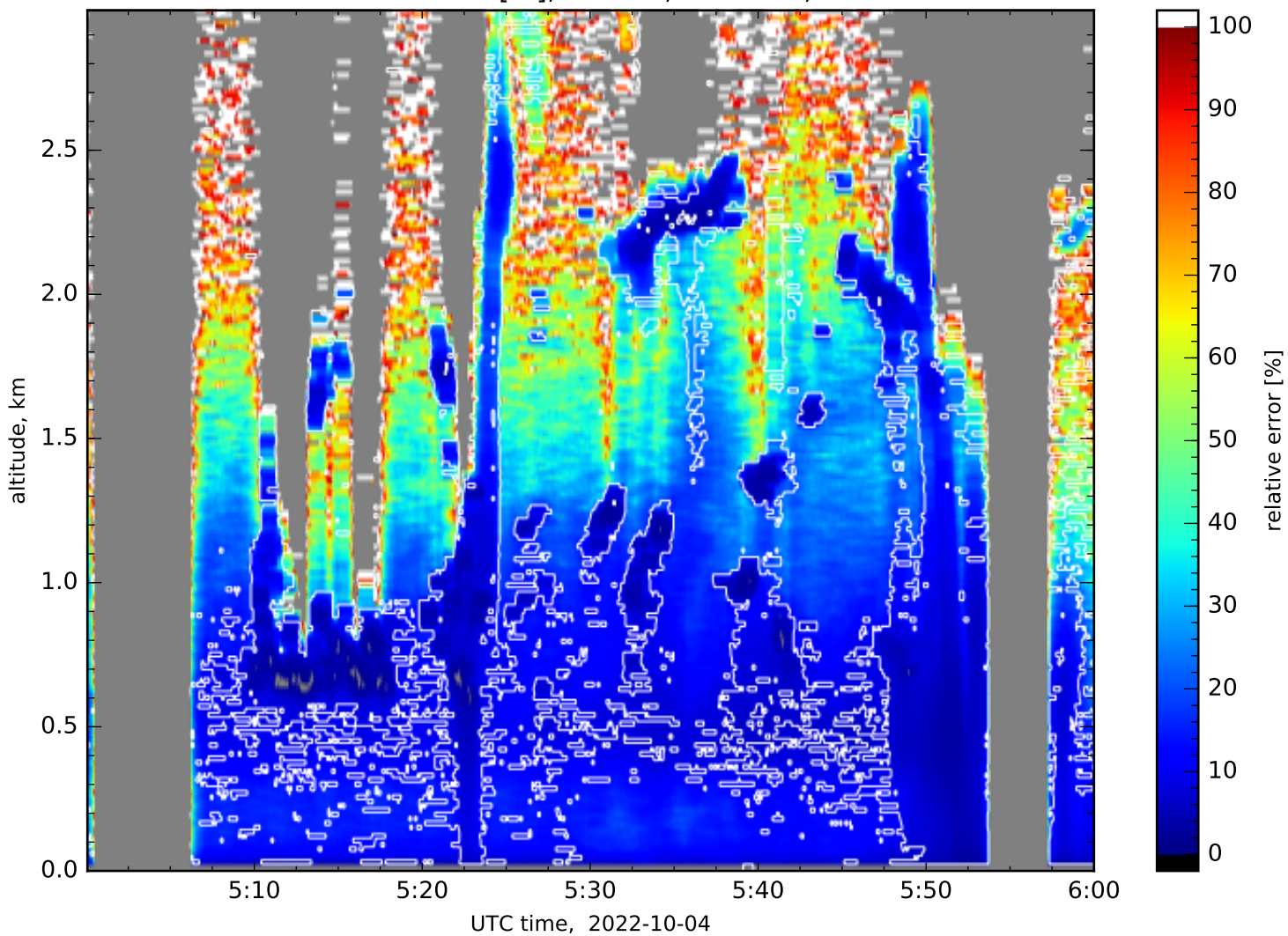
Particle backscatter error, 355nm, glue, res.: 60s, 15m



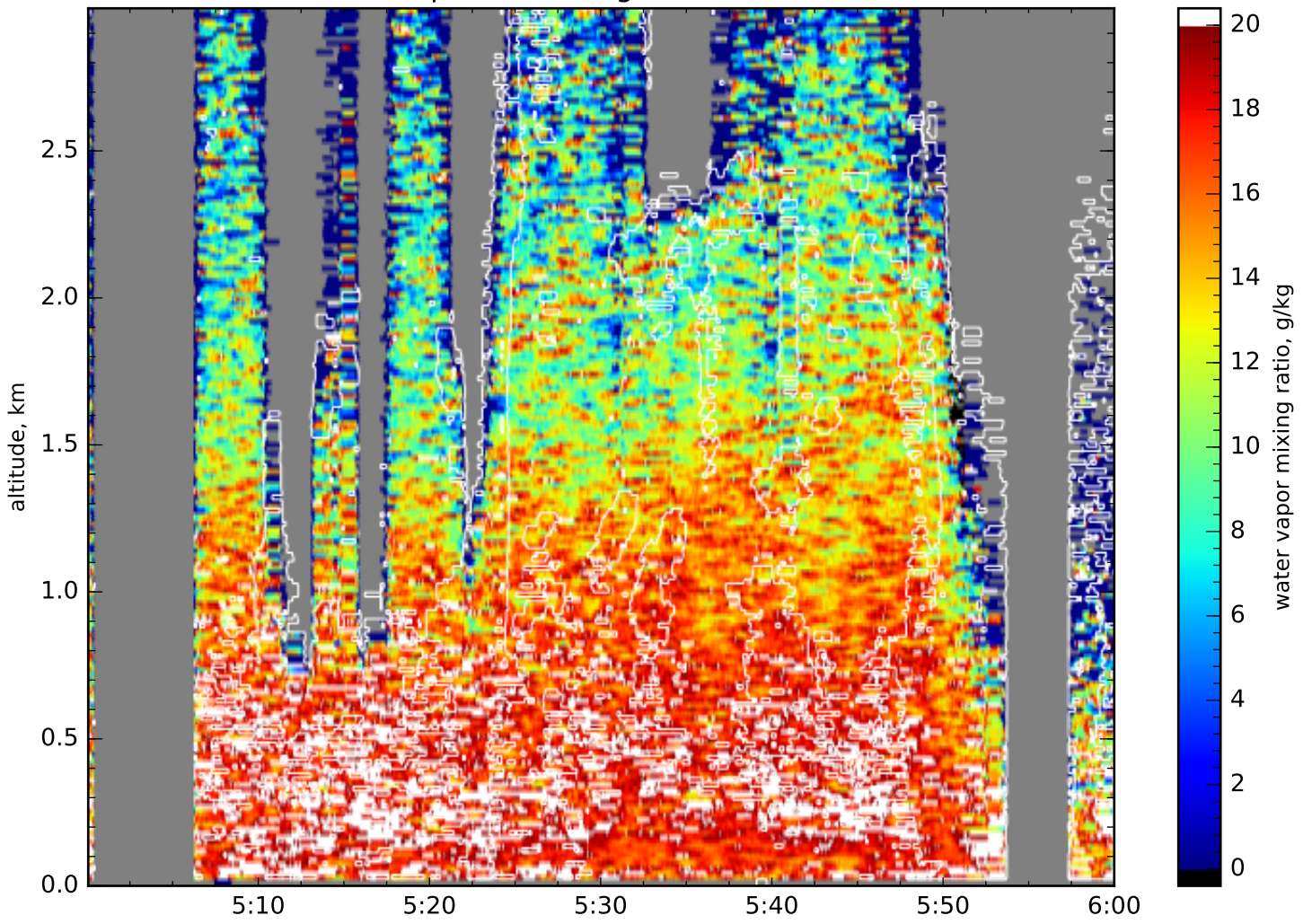
Volume linear depol. ratio, 532nm, res.: 60s, 15m



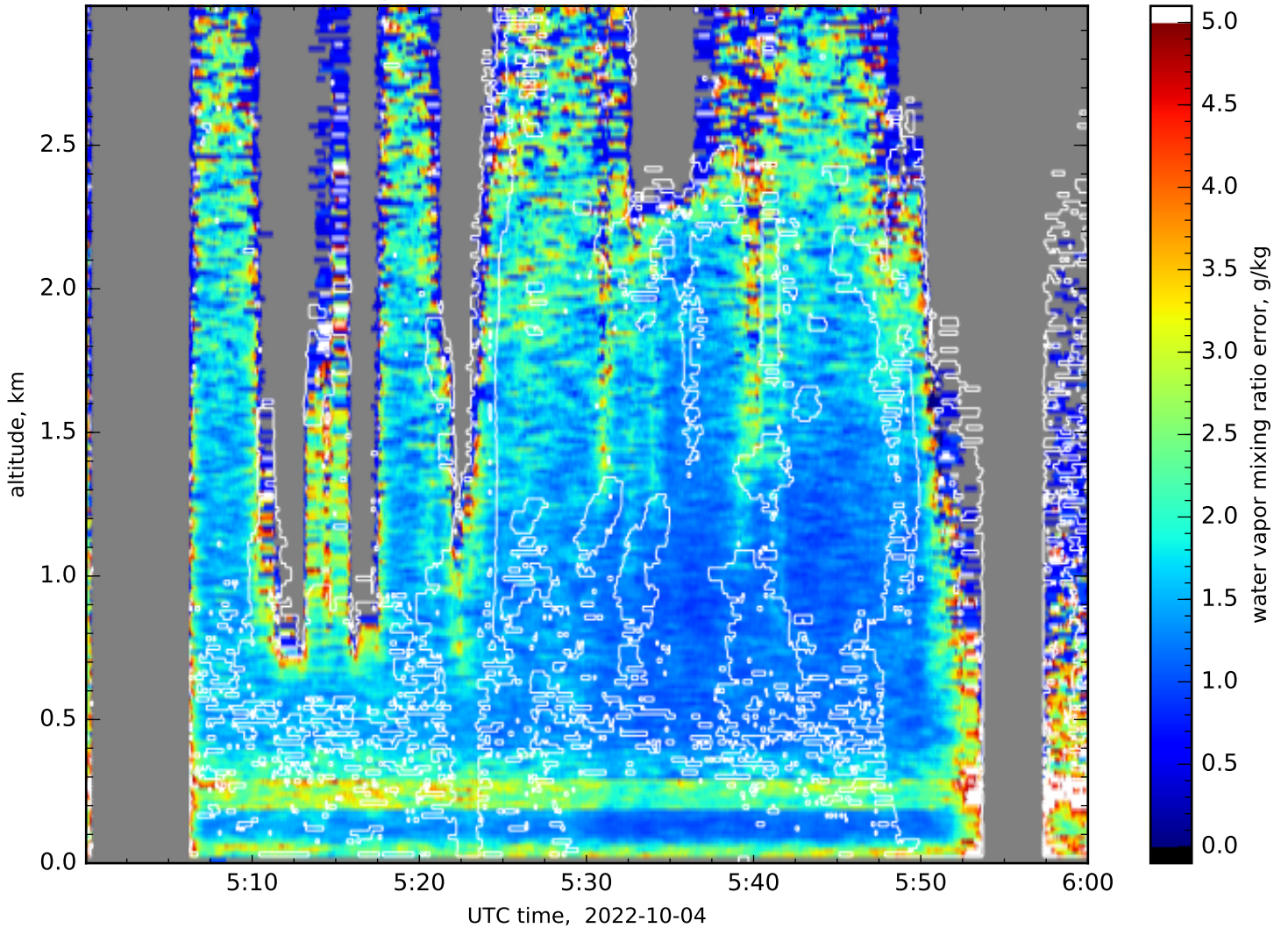
Relative error [%], 532nm, res.: 60s, 15m



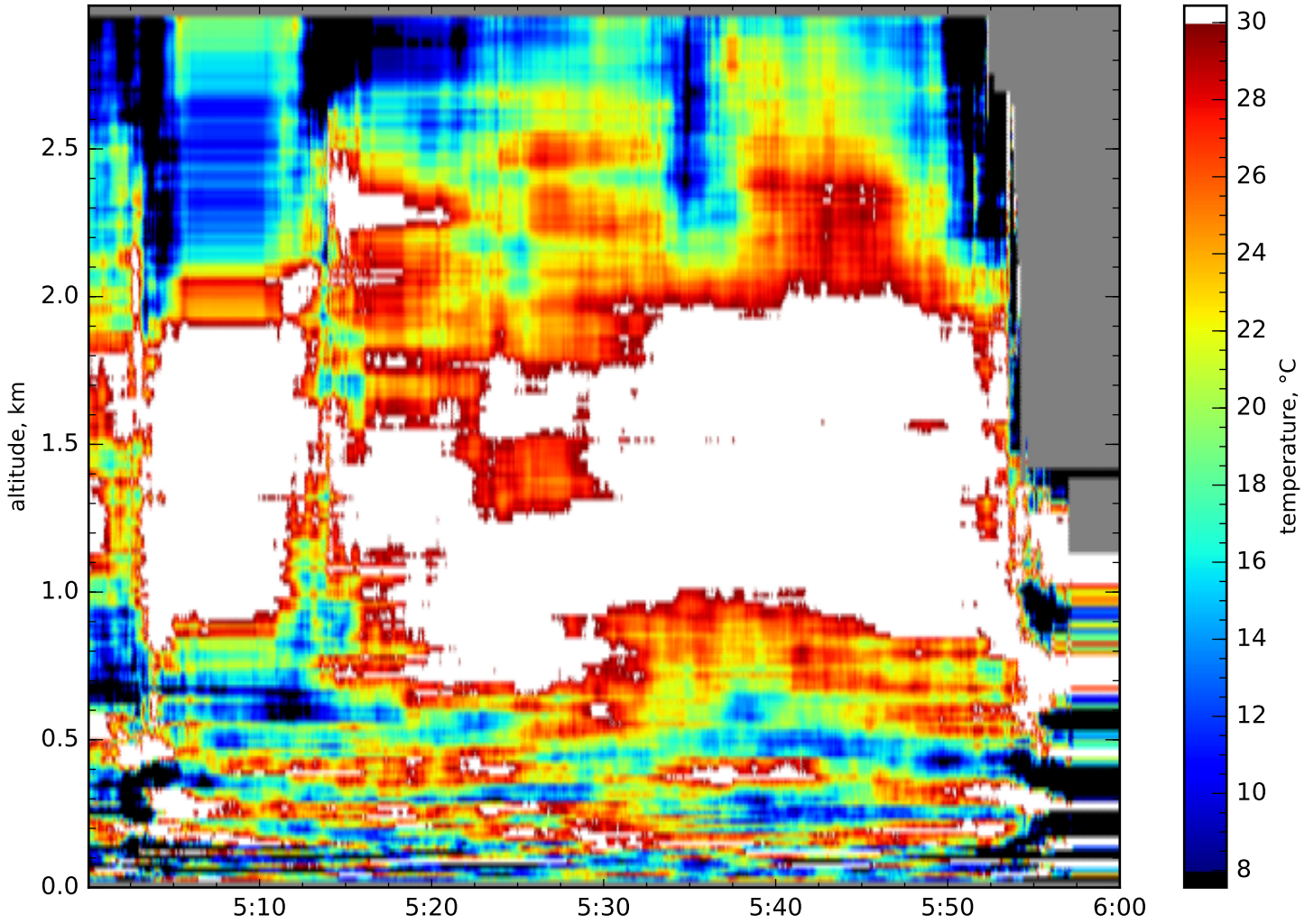
Water vapor, 355nm, glue, res.: 60s, 15m



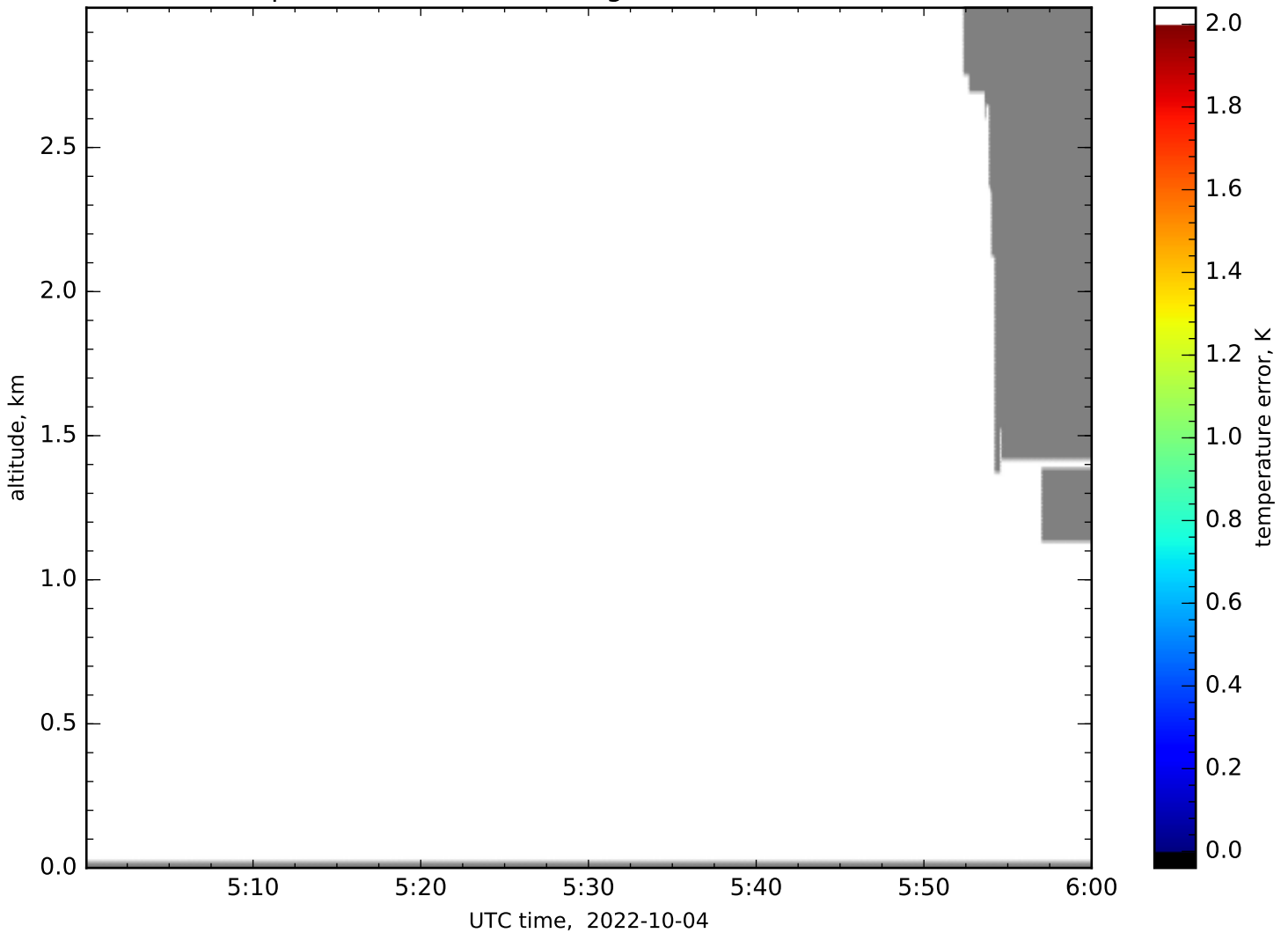
Water vapor error, 355nm, glue, res.: 60s, 15m



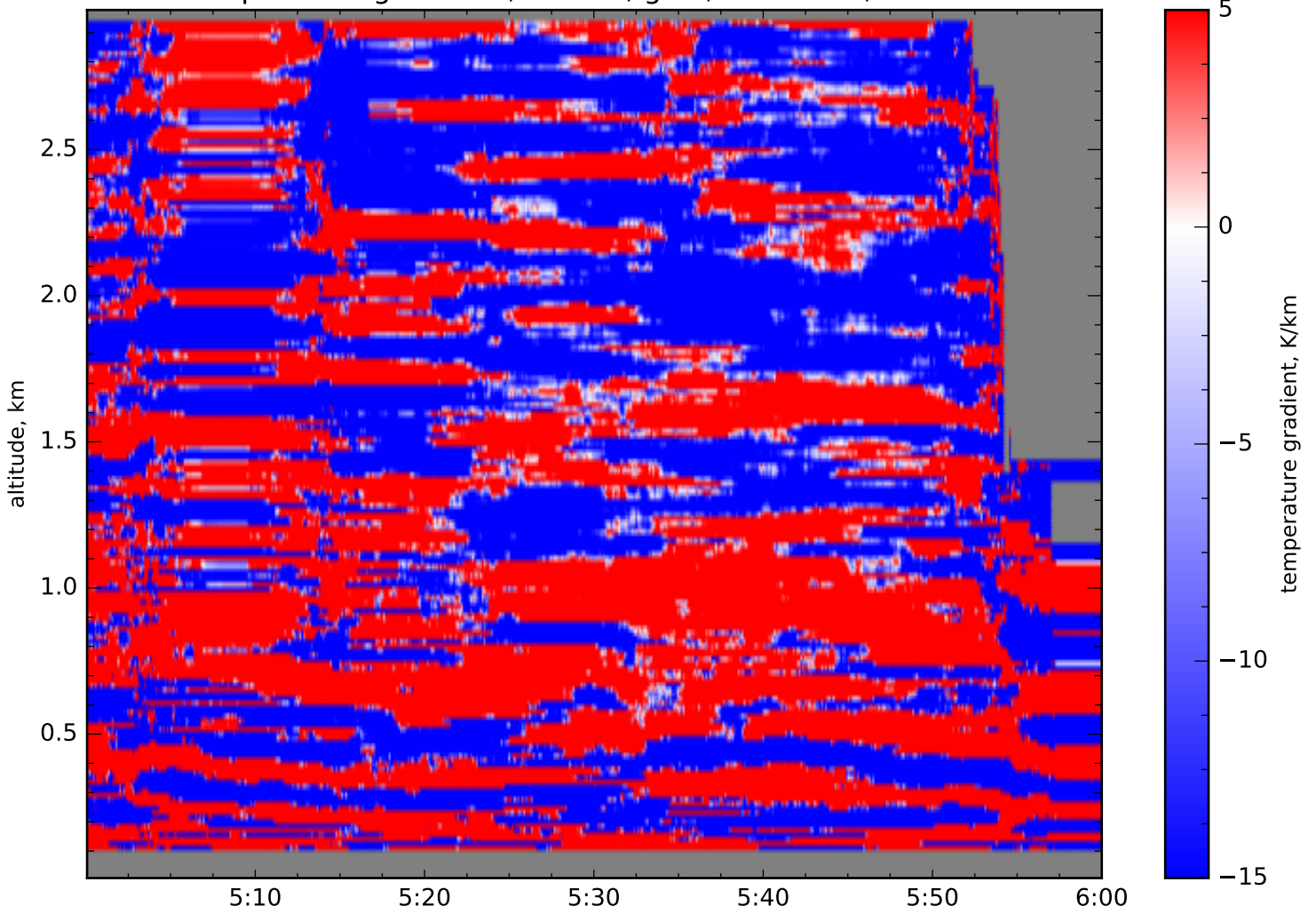
Temperature, 355nm, glue, res.: 480s, 15-330m



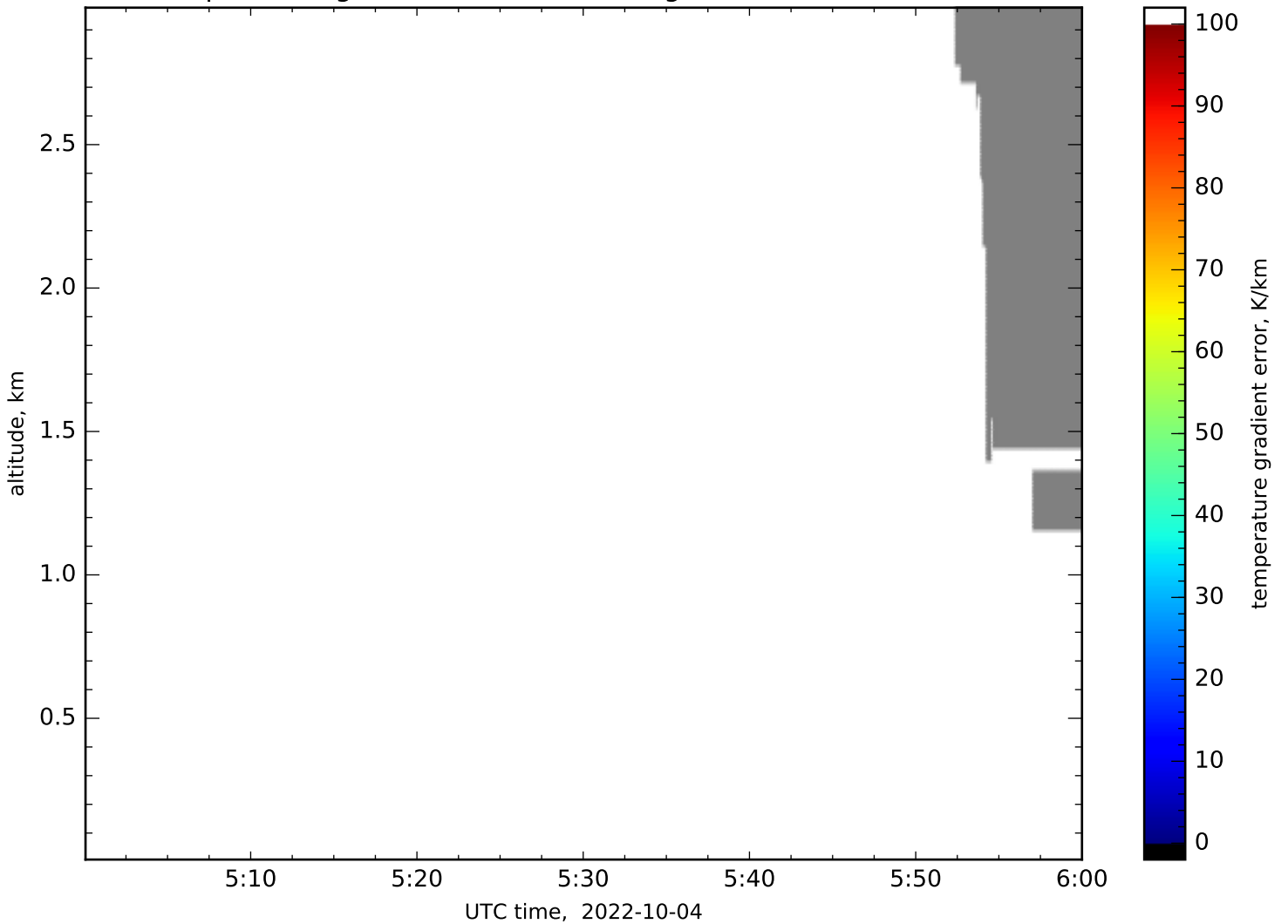
Temperature error, 355nm, glue, res.: 480s, 15-330m



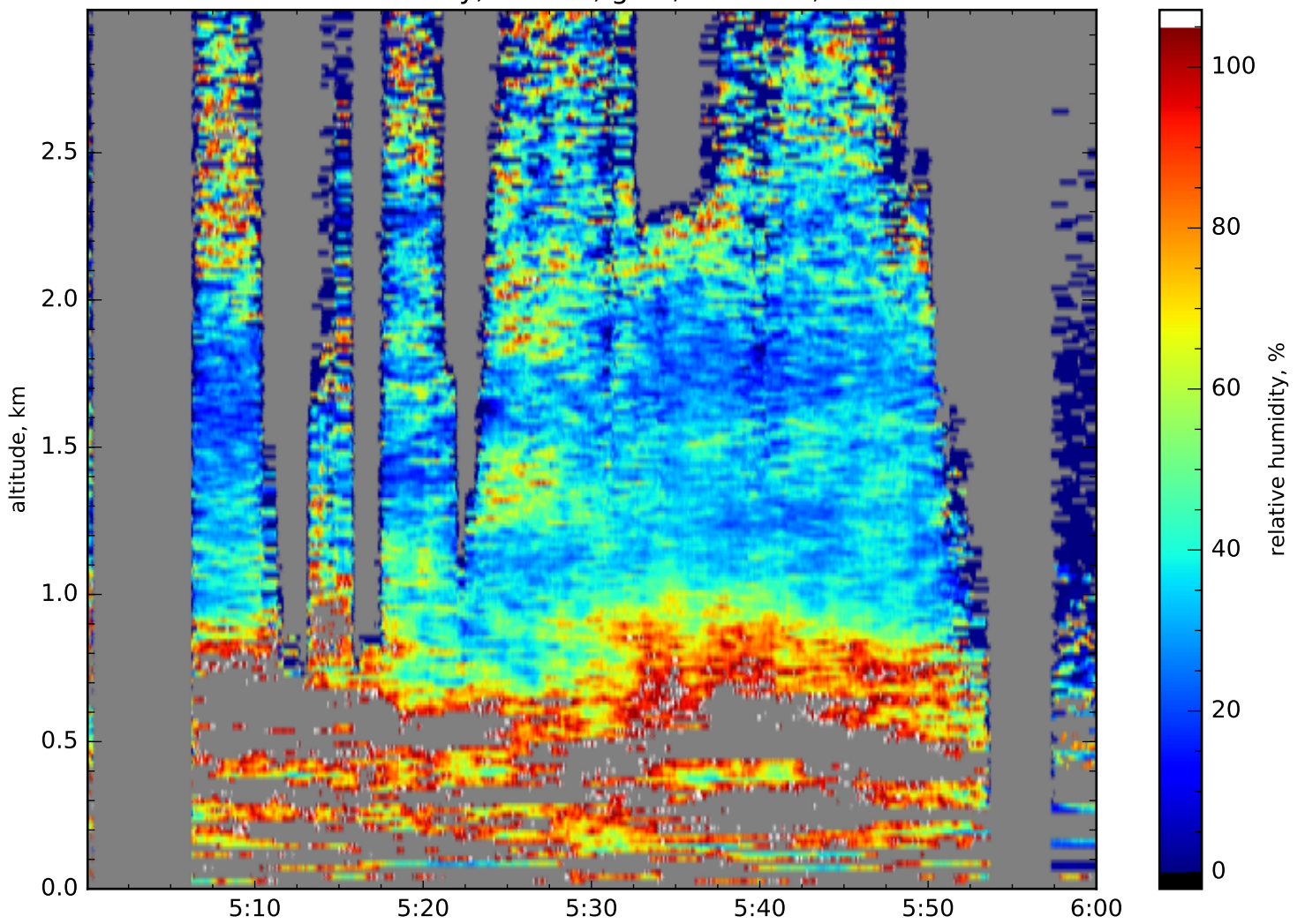
Temperature gradients, 355nm, glue, res.: 480s, 15-330m



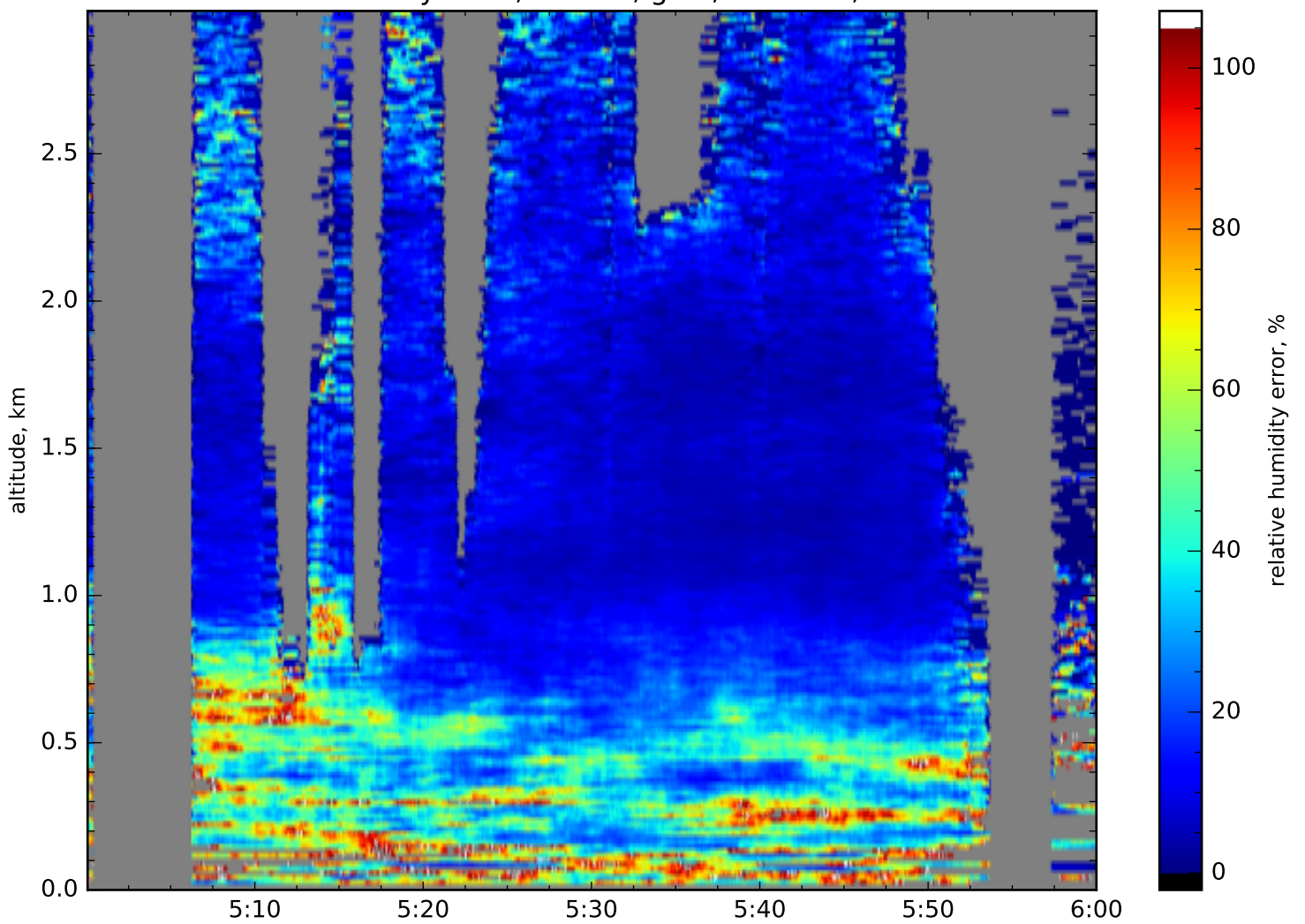
Temperature gradient error, 355nm, glue, res.: 480s, 15-330m



Relative humidity, 355nm, glue, res.: 60s, 15-330m

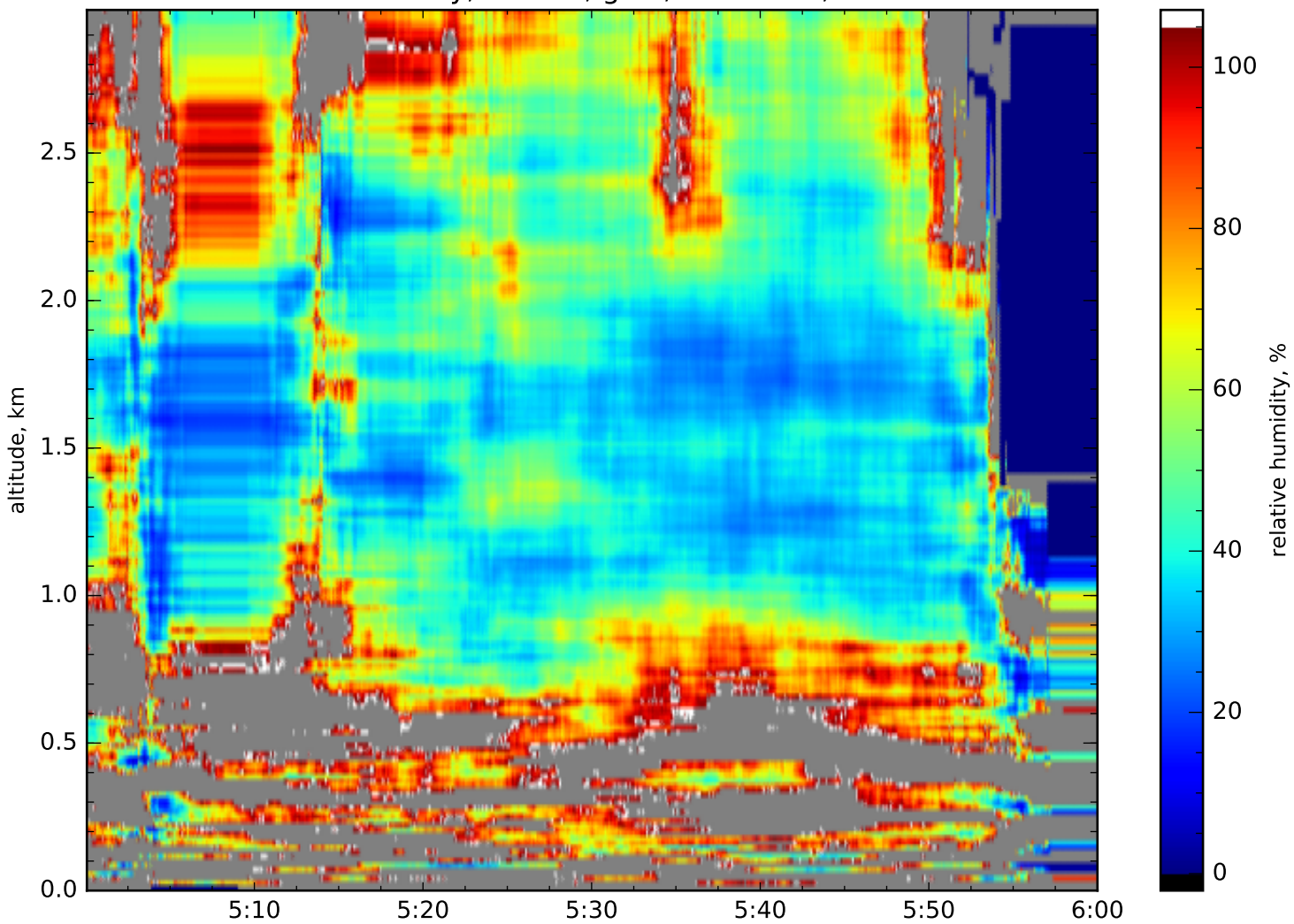


Relative humidity error, 355nm, glue, res.: 60s, 15-330m





Relative humidity, 355nm, glue, res.: 480s, 15-330m



Relative humidity error, 355nm, glue, res.: 480s, 15-330m

