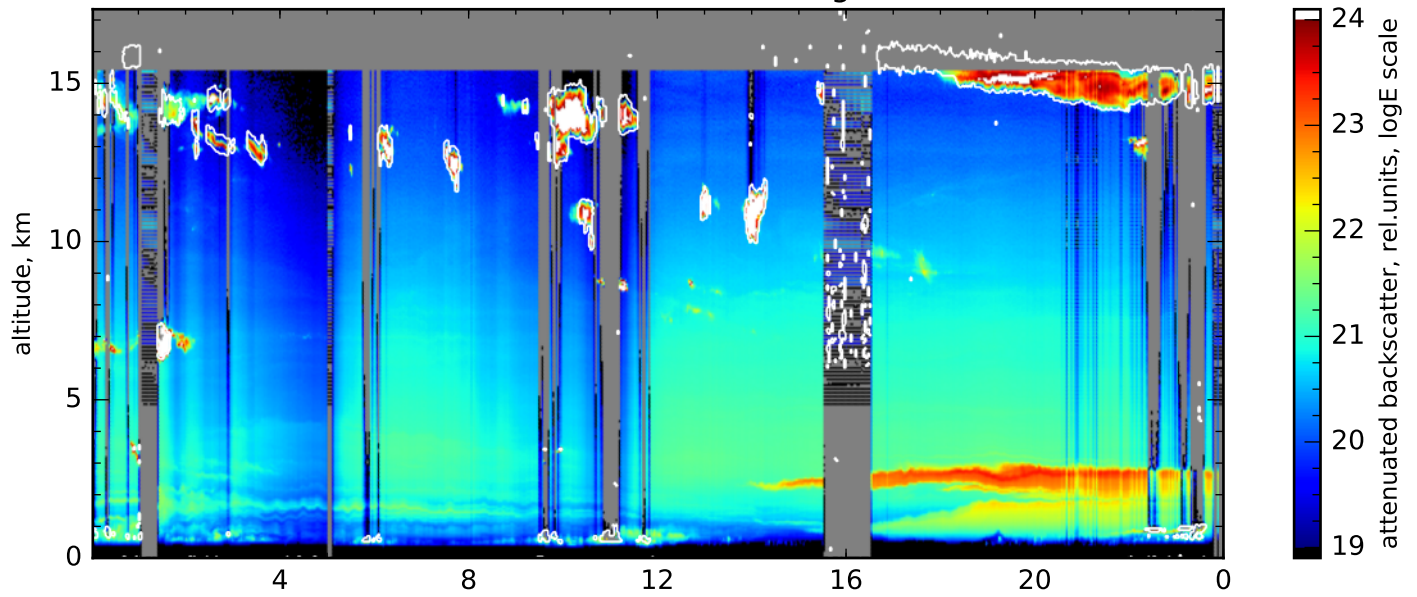
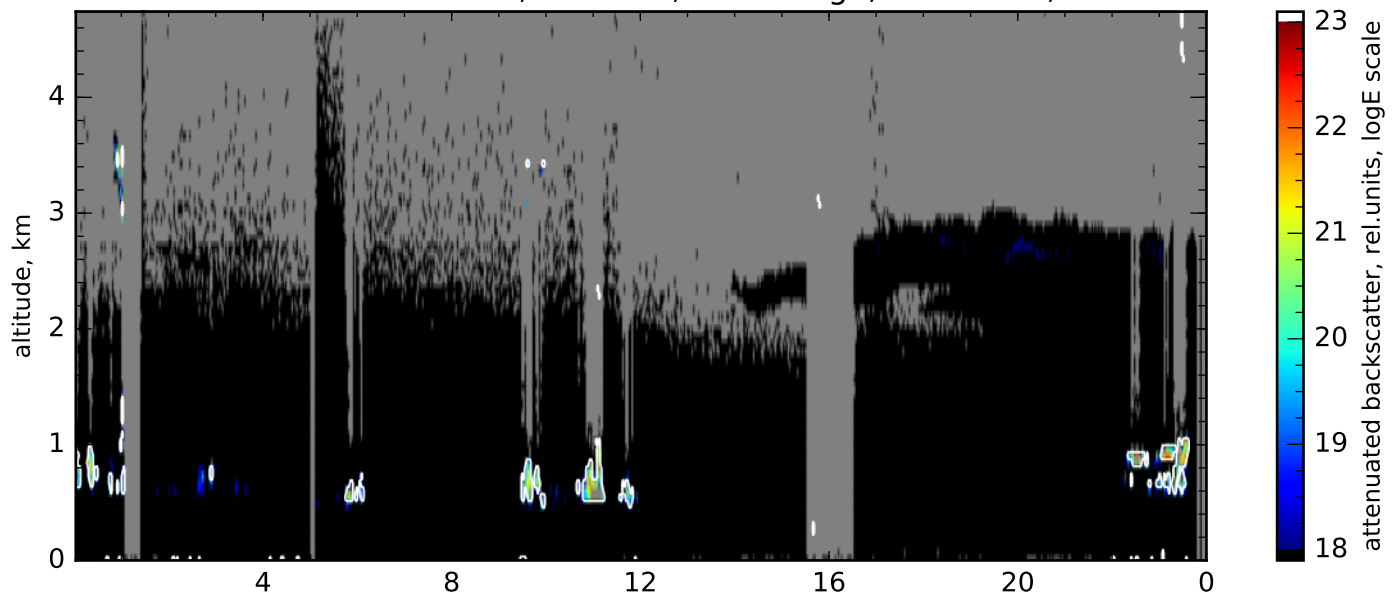


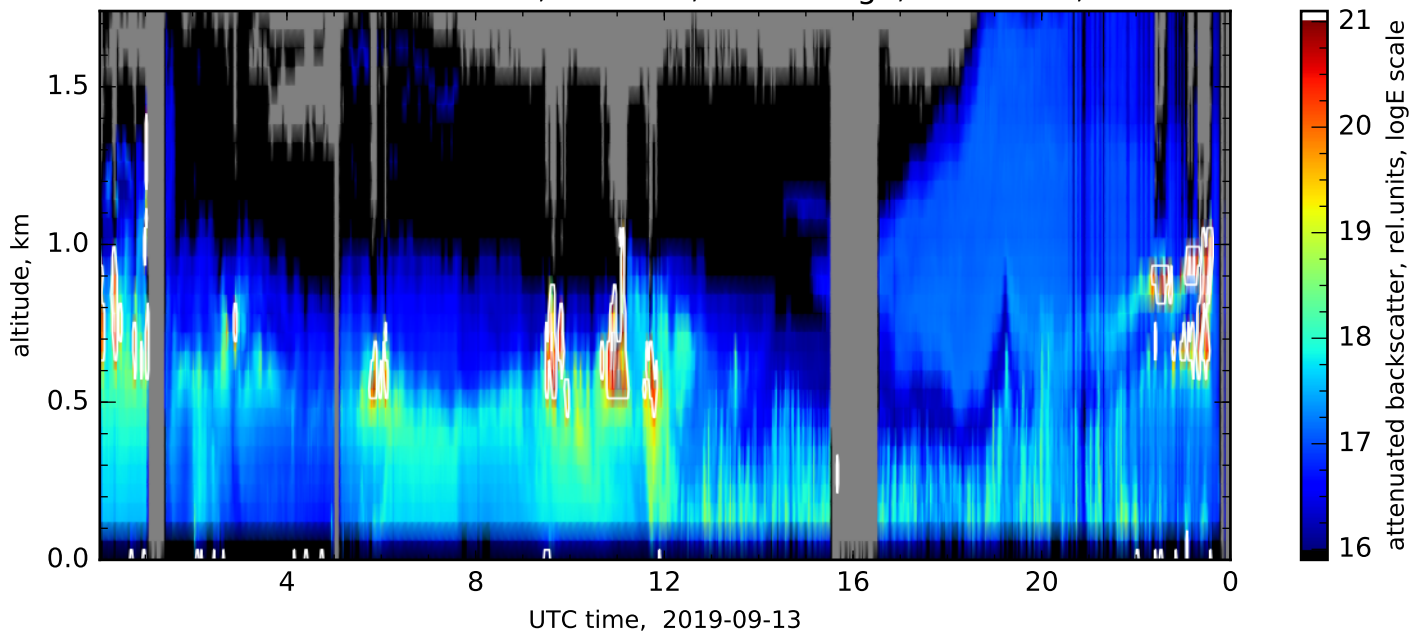
attenuated backscatter, 1064nm, far range, res.: 120s, 60m



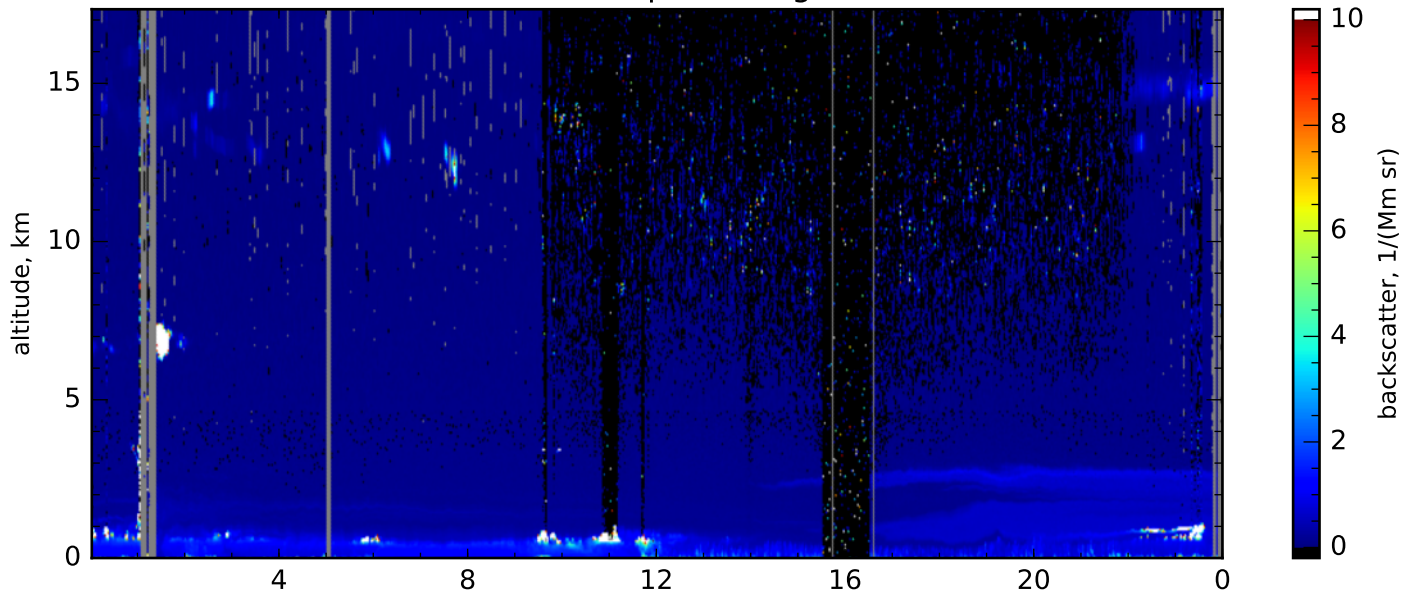
attenuated backscatter, 1064nm, near range, res.: 120s, 60m



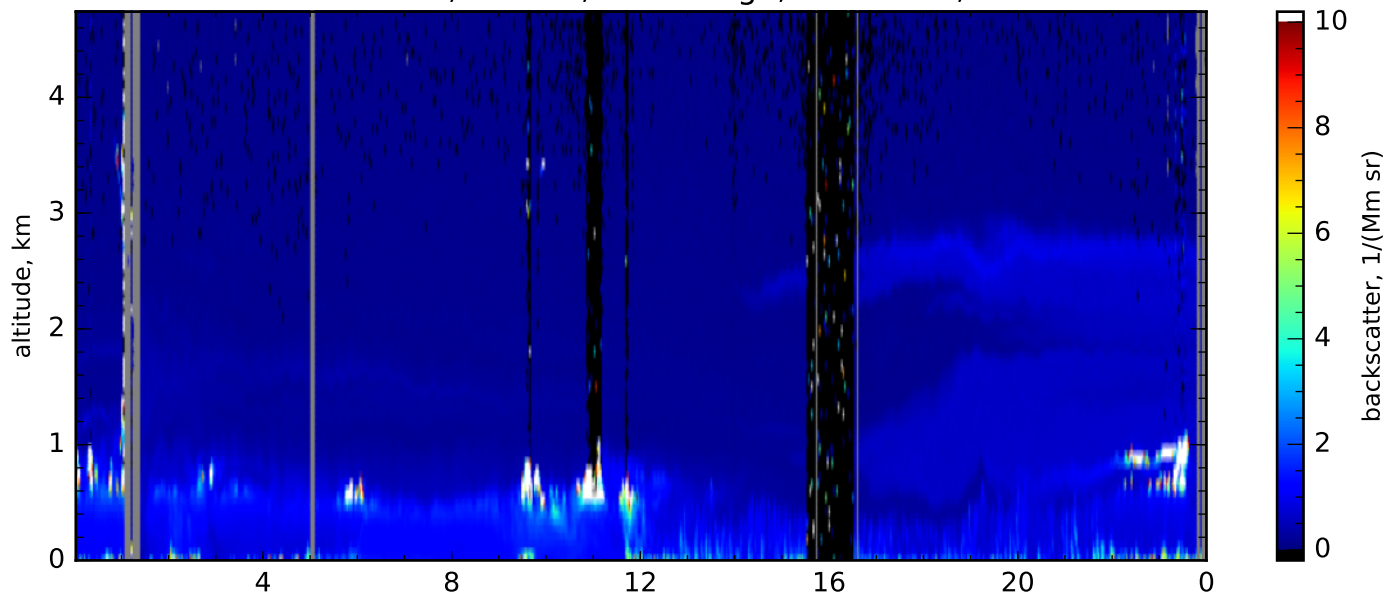
attenuated backscatter, 1064nm, close range, res.: 120s, 60m



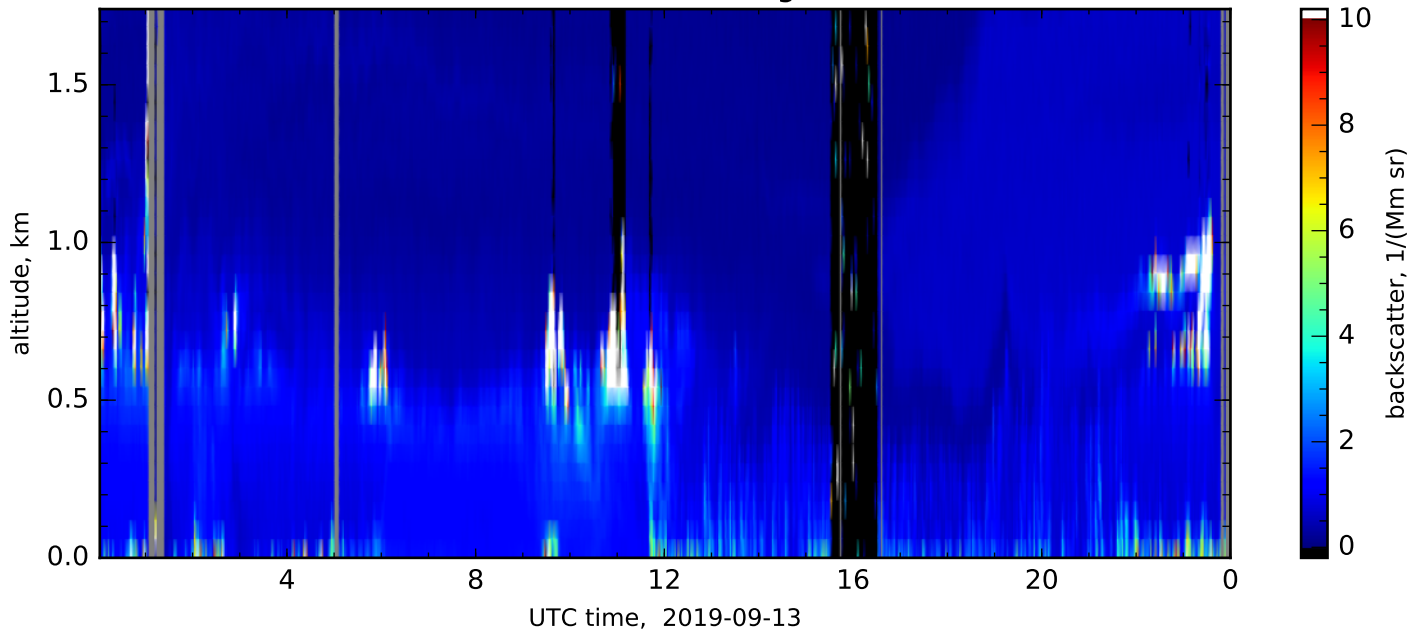
Particle backscatter, 532nm, complete range, res.: 120s, 60m-660m



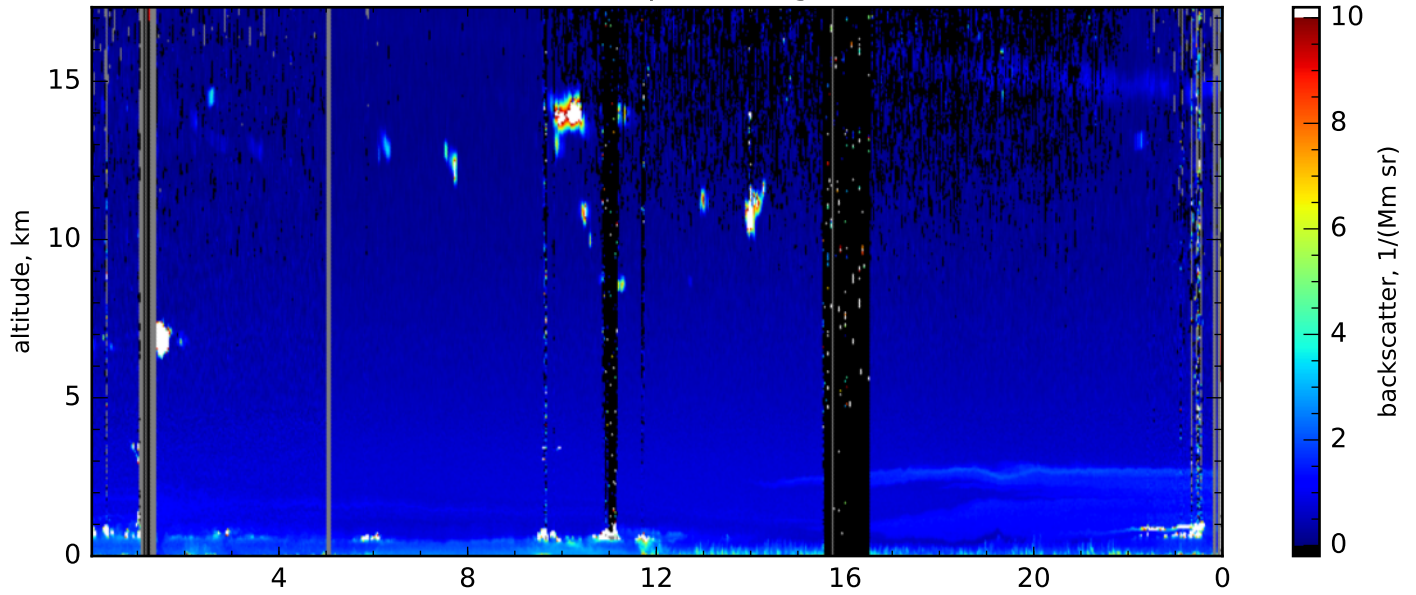
Particle backscatter, 532nm, near range, res.: 120s, 60m-180m



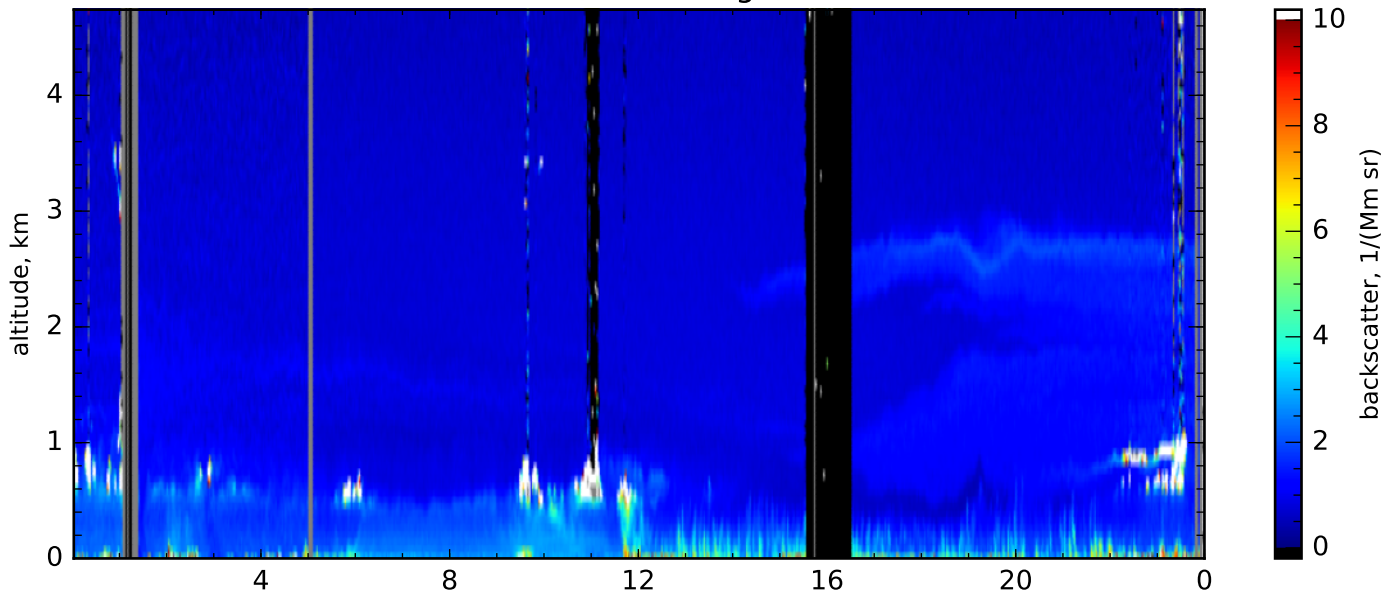
Particle backscatter, 532nm, close range, res.: 120s, 60m-60m



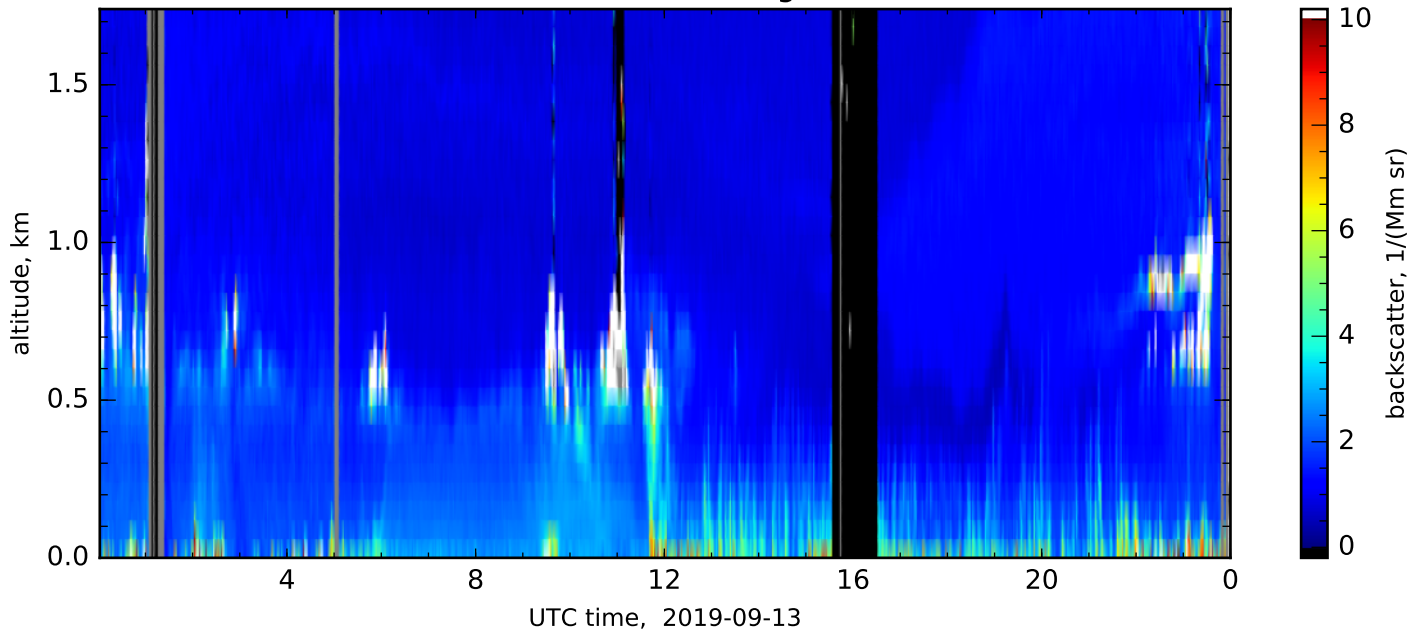
Particle backscatter, 355nm, complete range, res.: 120s, 60m-660m



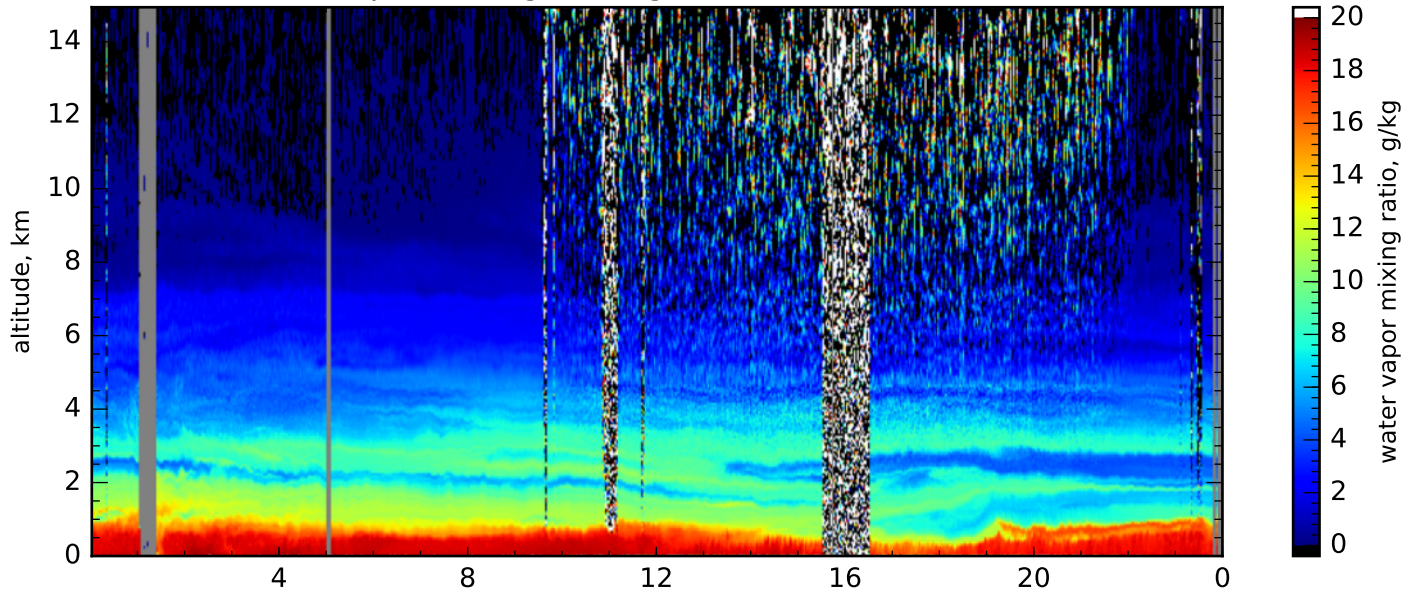
Particle backscatter, 355nm, near range, res.: 120s, 60m-180m



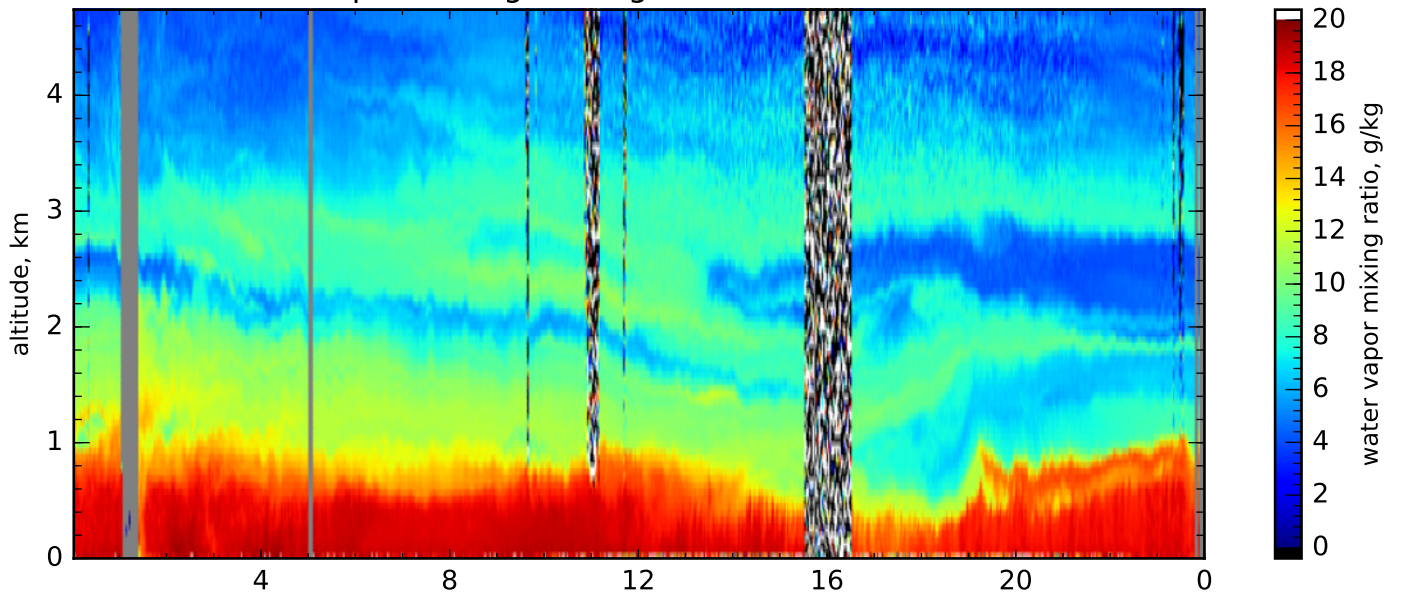
Particle backscatter, 355nm, close range, res.: 120s, 60m-60m



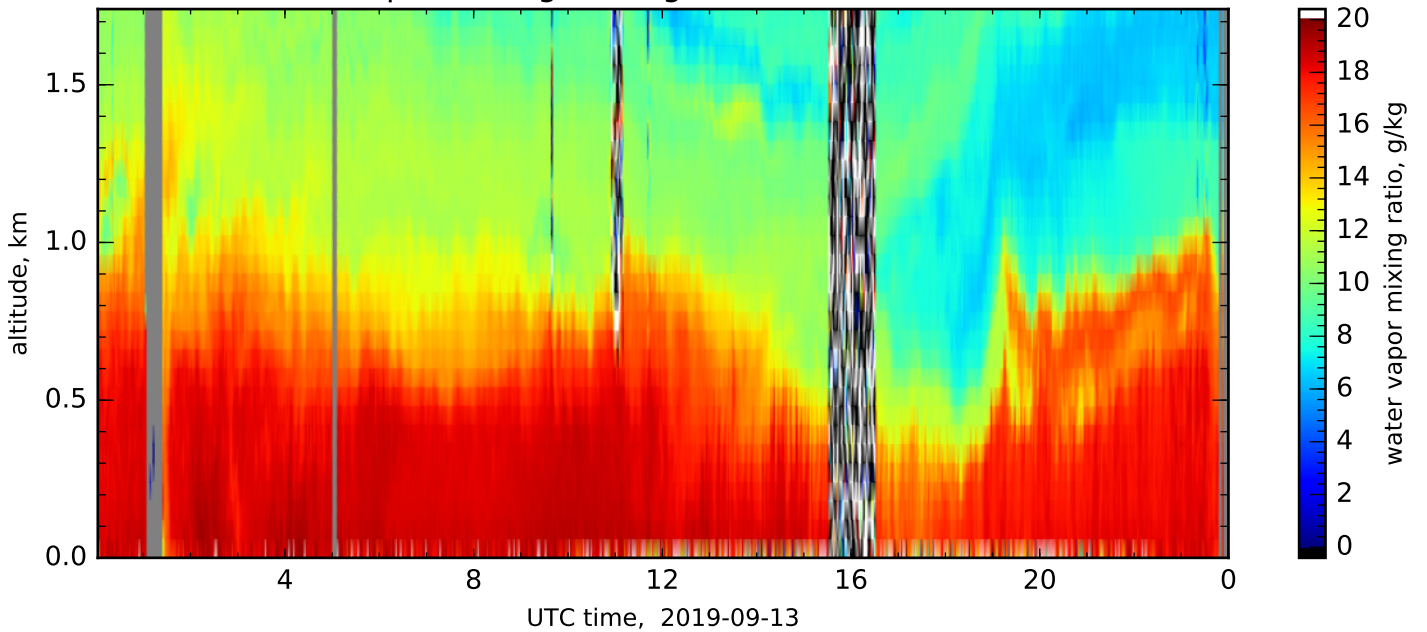
Water vapor mixing ratio, glue, res.: 120s, 60m-540m



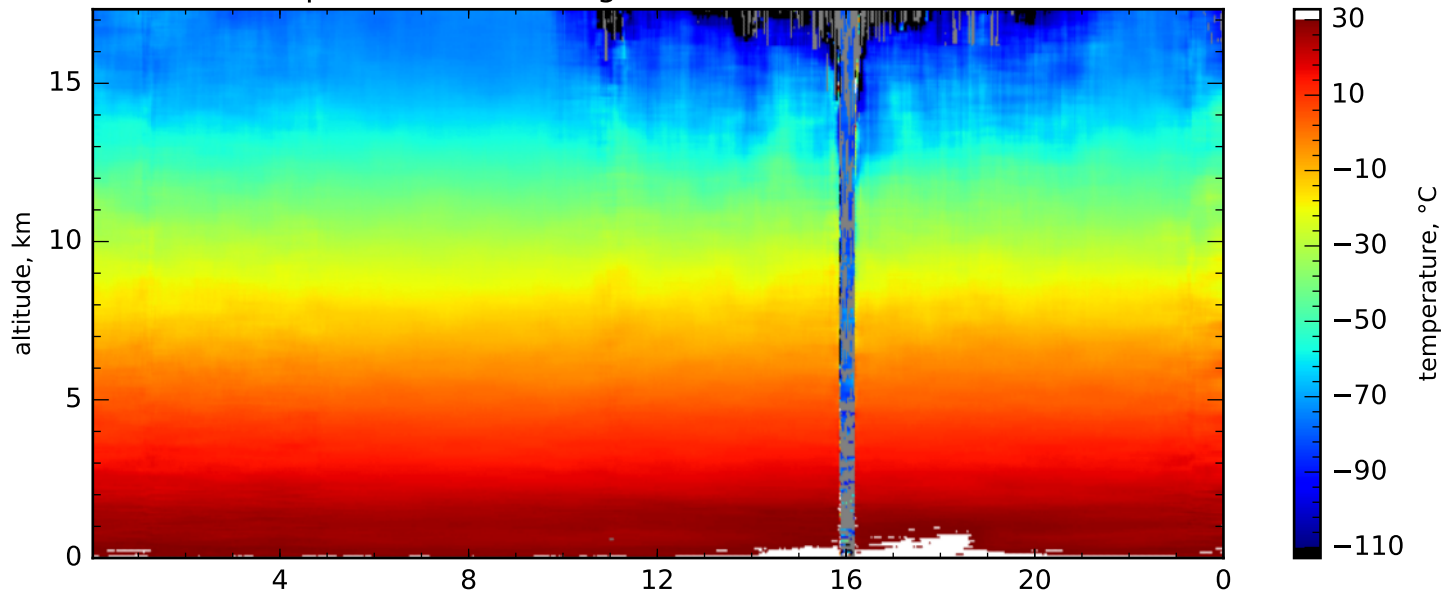
Water vapor mixing ratio, glue, res.: 120s, 60m-180m



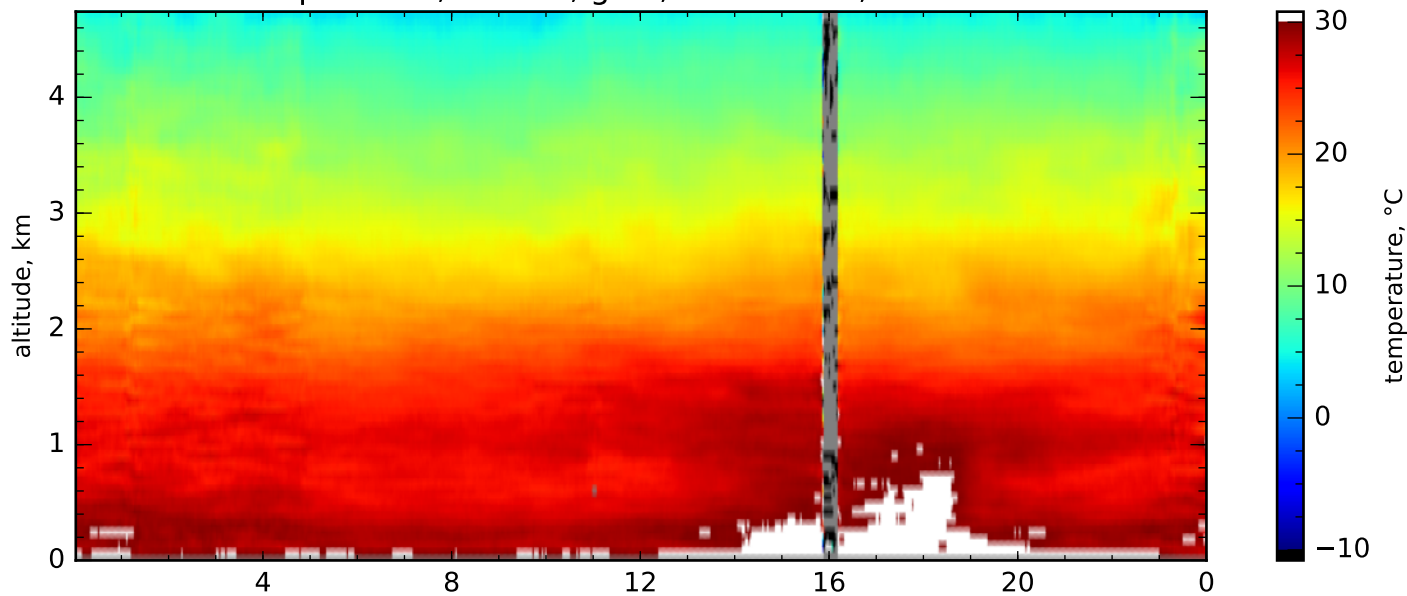
Water vapor mixing ratio, glue, res.: 120s, 60m-60m



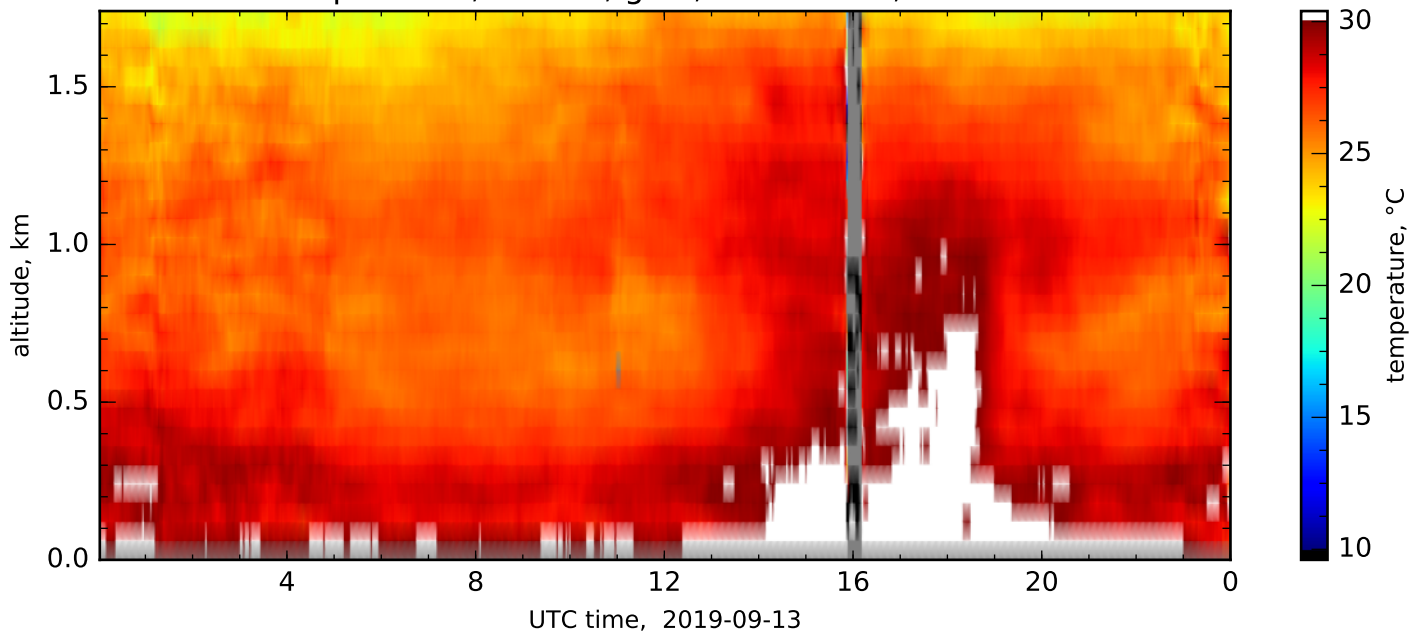
Temperature, 355nm, glue, res.: 2400s, 60m-1380m



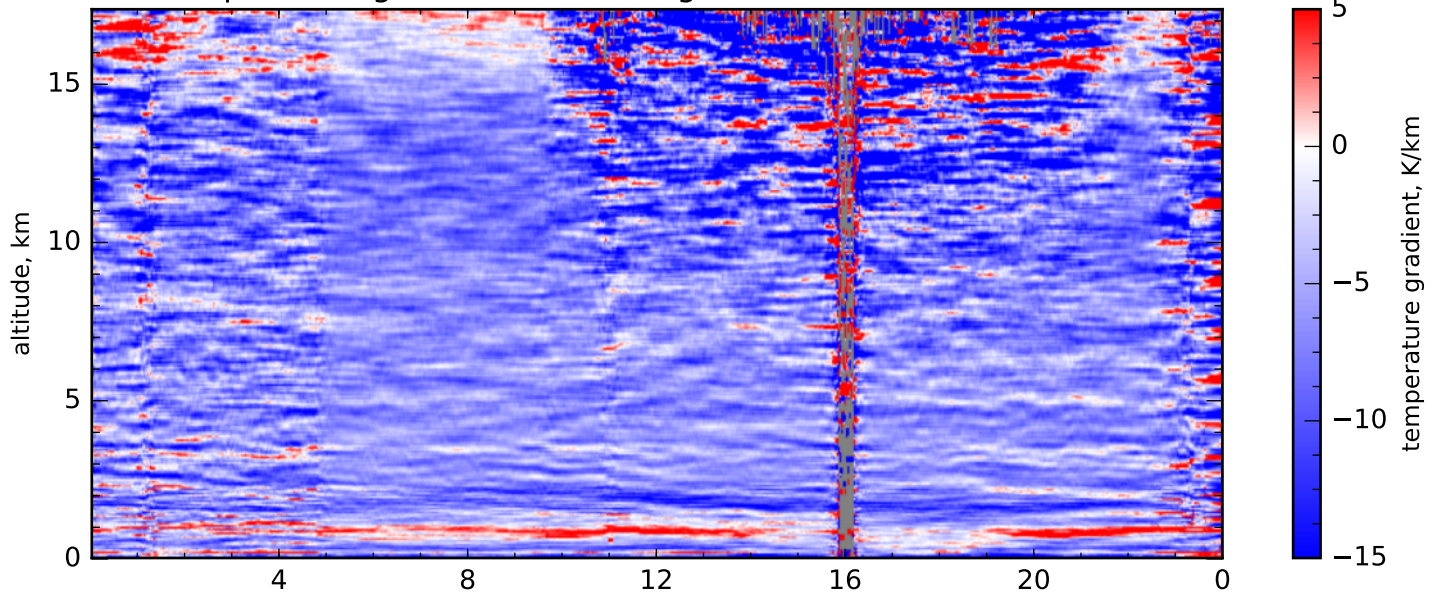
Temperature, 355nm, glue, res.: 2400s, 60m-300m



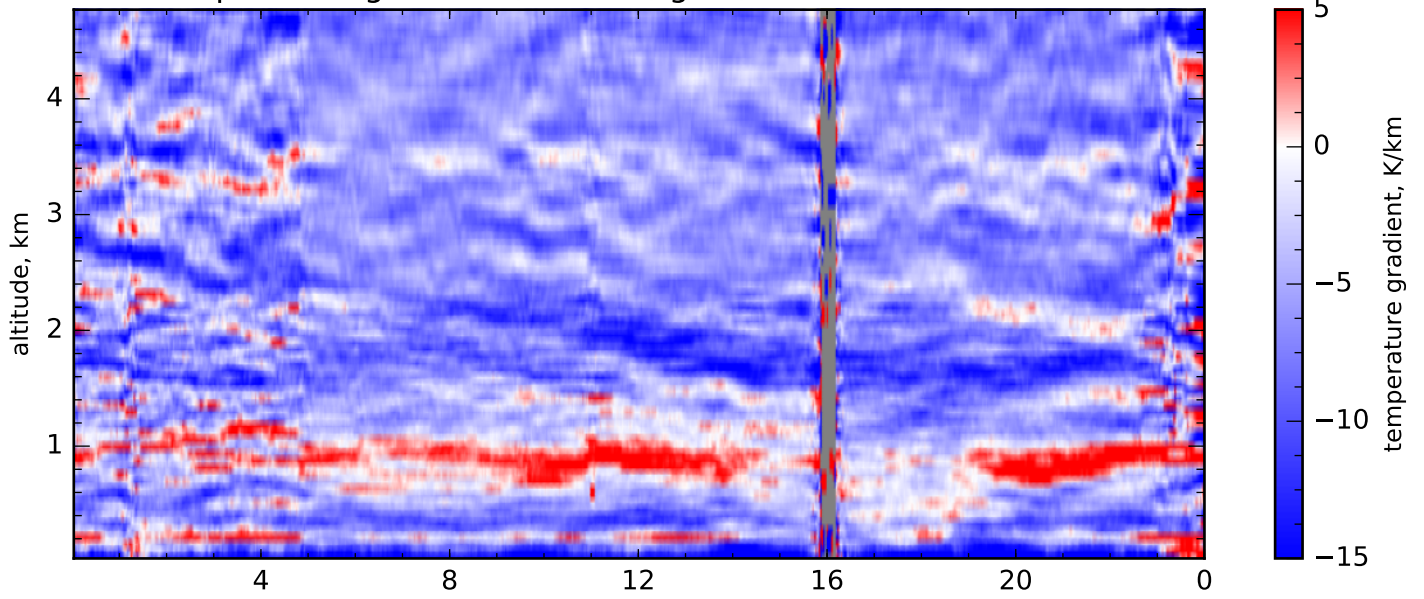
Temperature, 355nm, glue, res.: 2400s, 60m-60m



Temperature gradients, 355nm, glue, res.: 2400s, 60m-1380m



Temperature gradients, 355nm, glue, res.: 2400s, 60m-300m



Temperature gradients, 355nm, glue, res.: 2400s, 60m-60m

