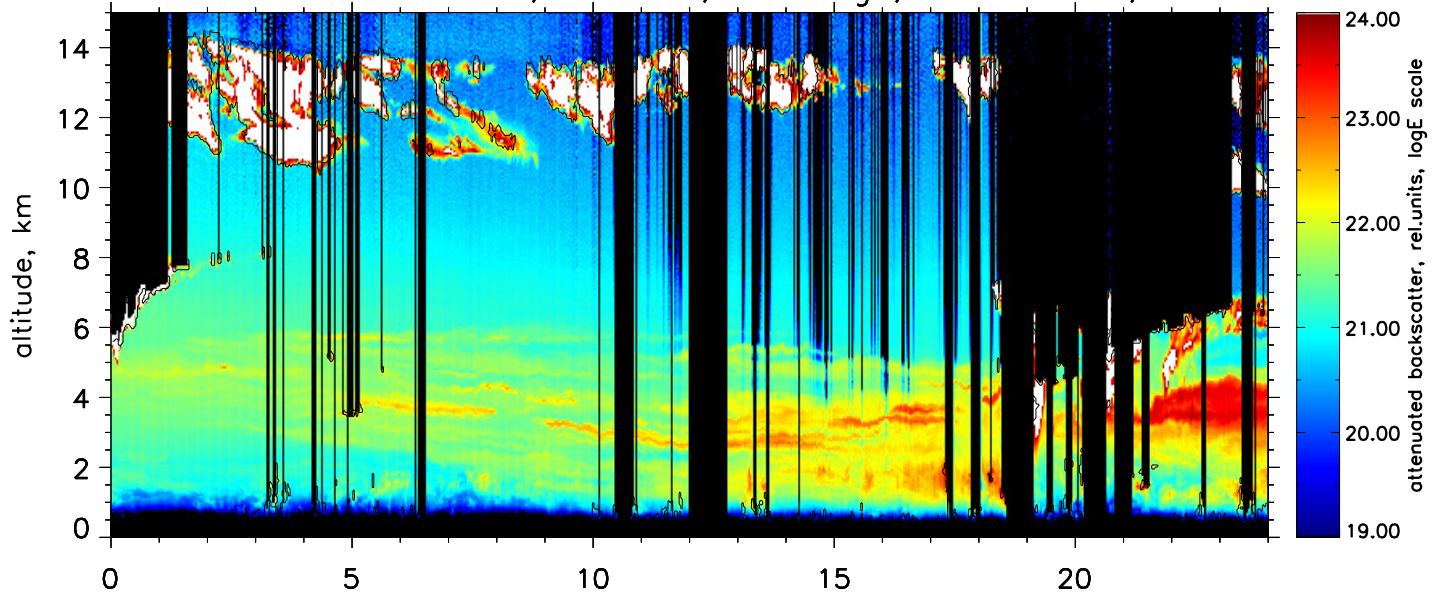
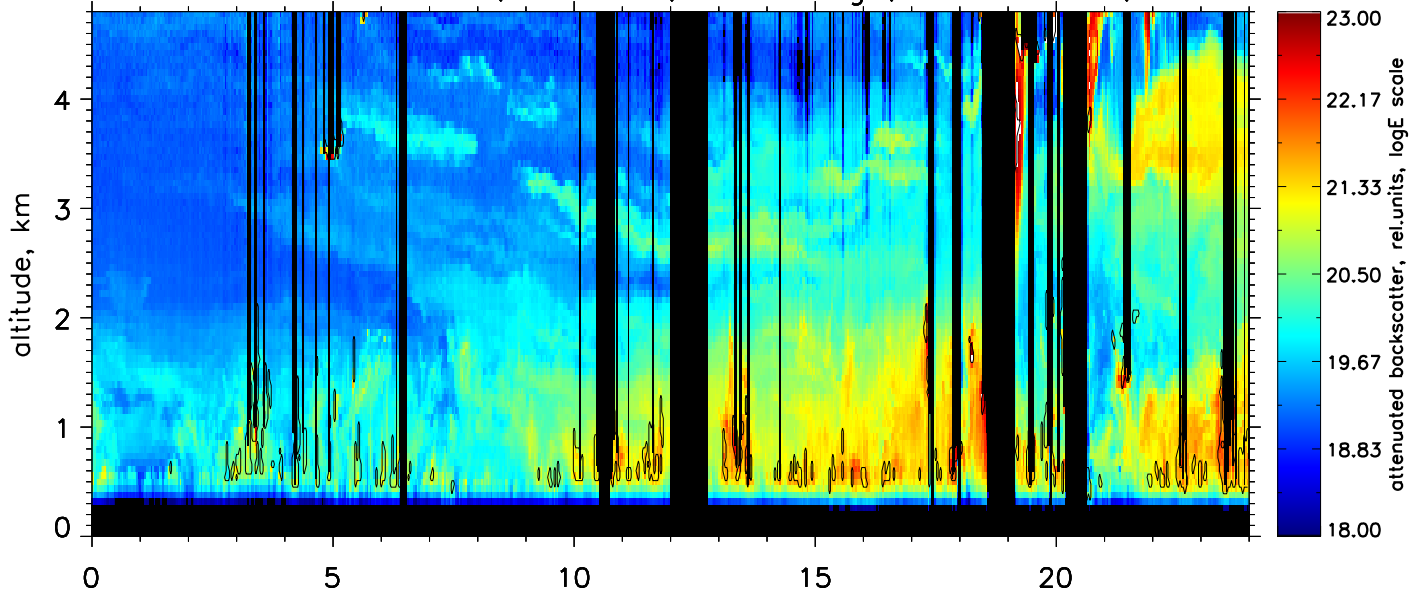


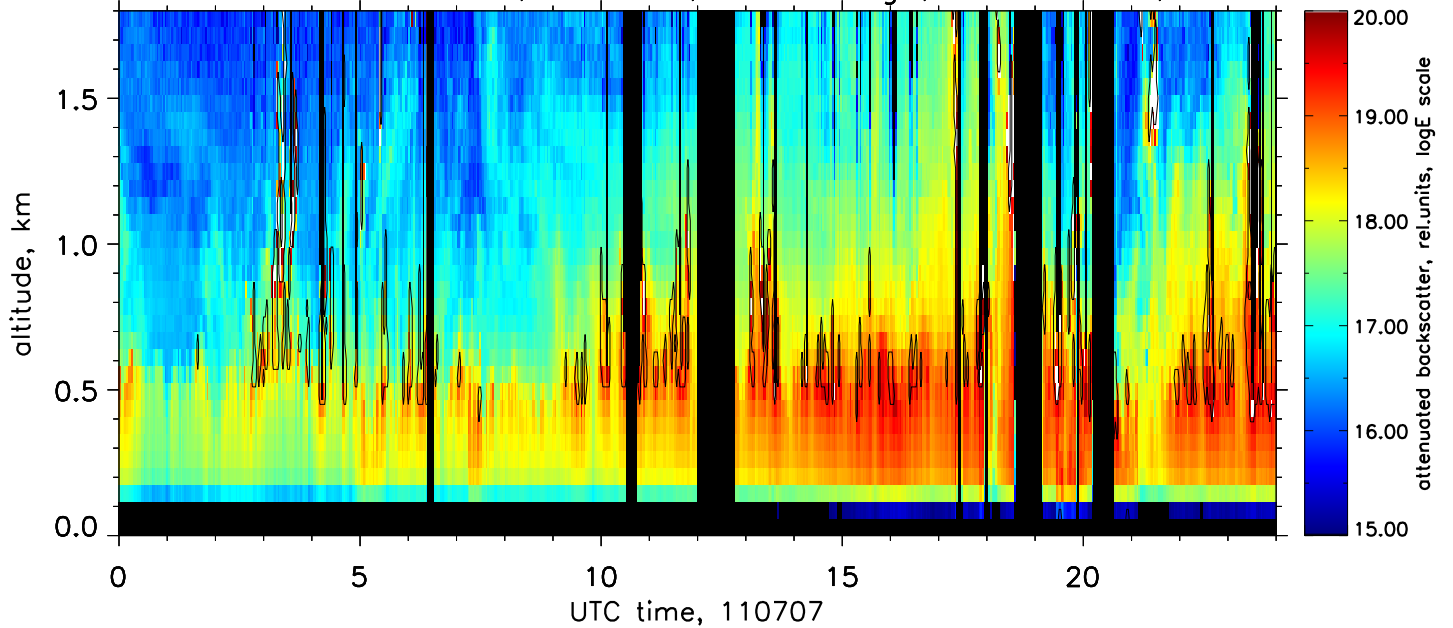
Attenuated backscatter, 1064nm, far range, res.: 2 min., 60 m



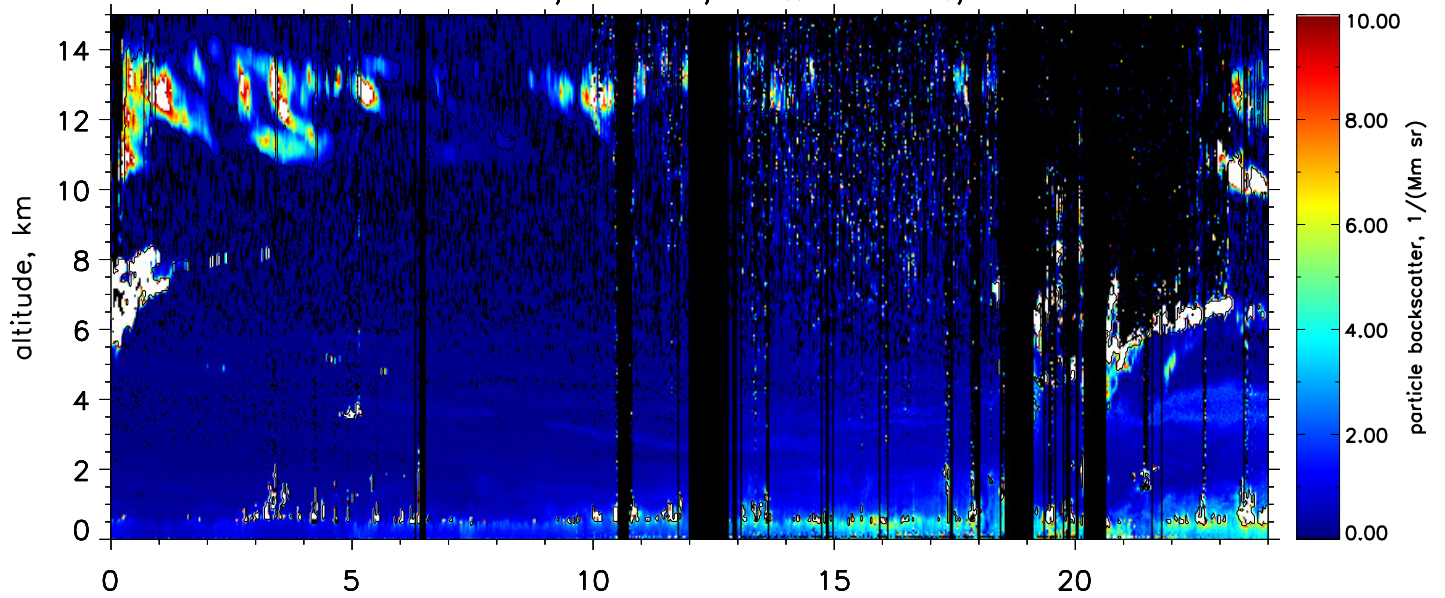
Attenuated backscatter, 1064nm, near range, res.: 2 min., 60 m



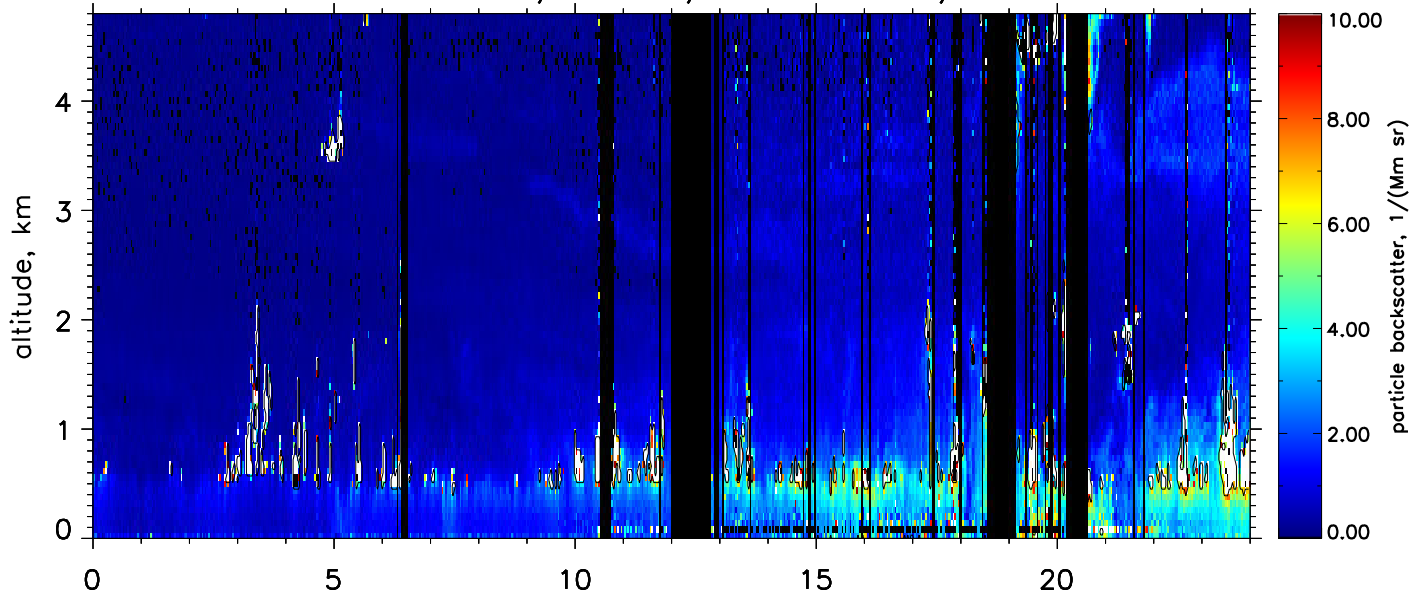
Attenuated backscatter, 1064nm, close range, res.: 2 min., 60 m



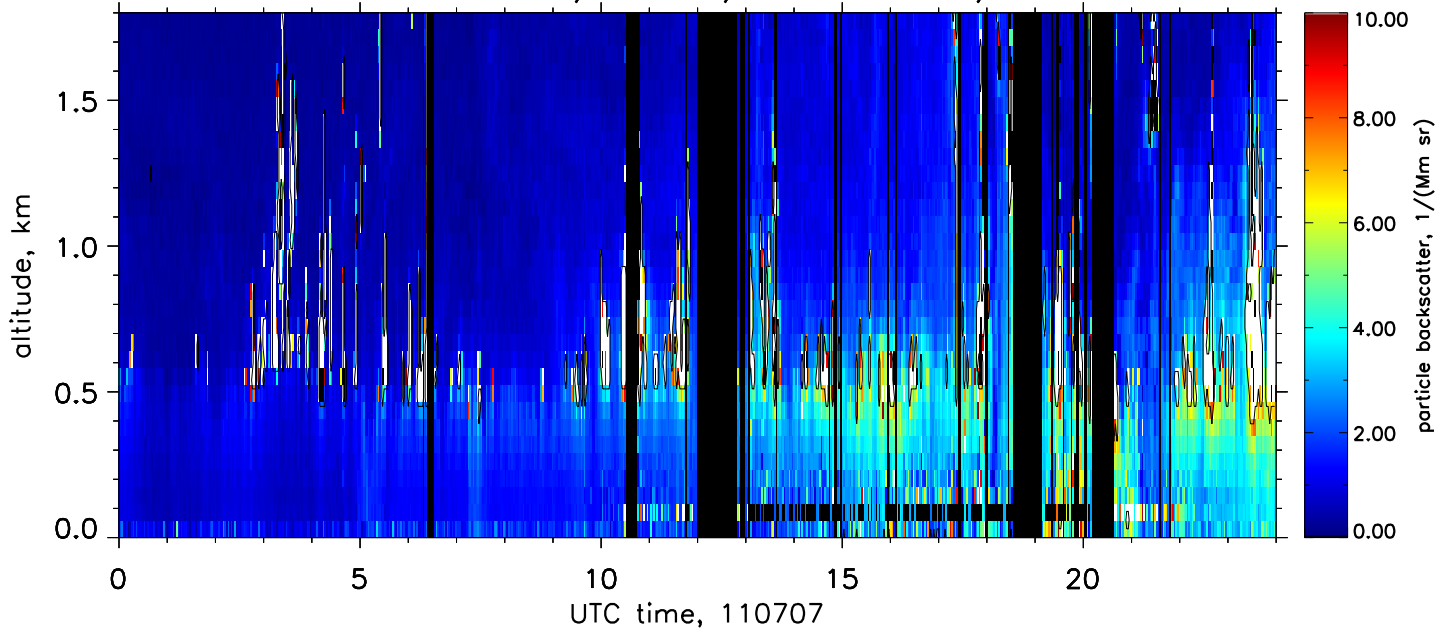
Particle backscatter, 532nm, res.: 2 min., 60–660 m



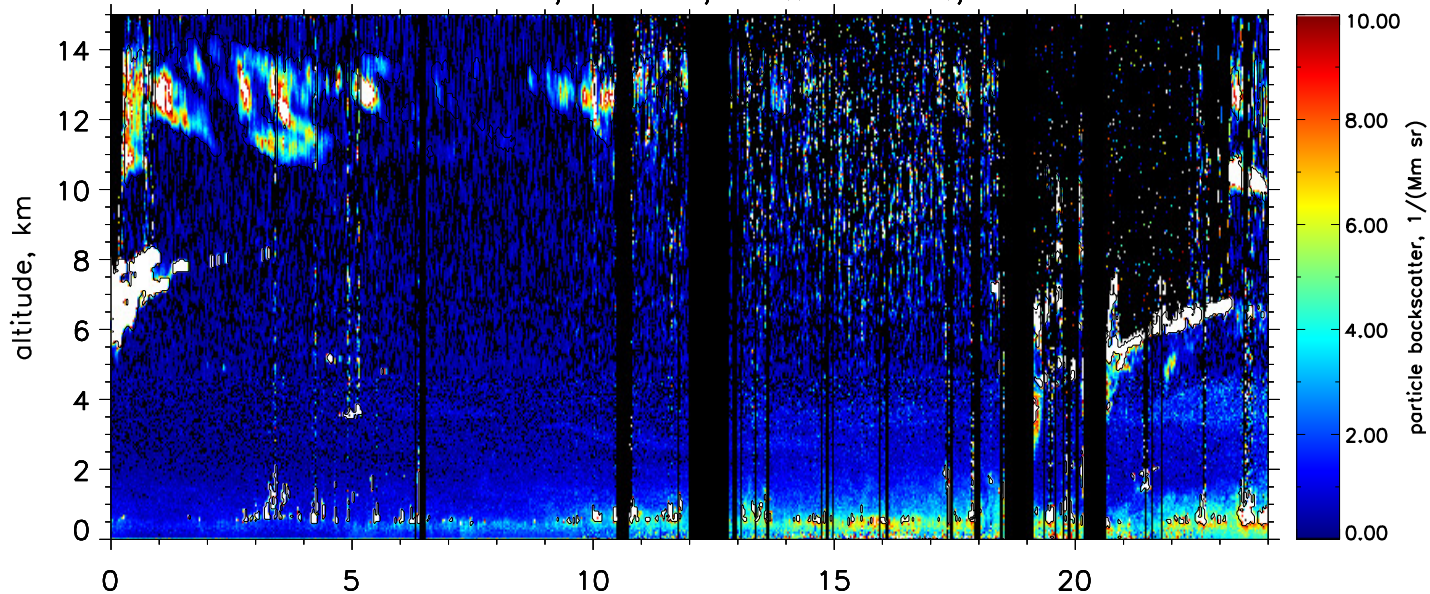
Particle backscatter, 532nm, res.: 2 min., 60–180 m



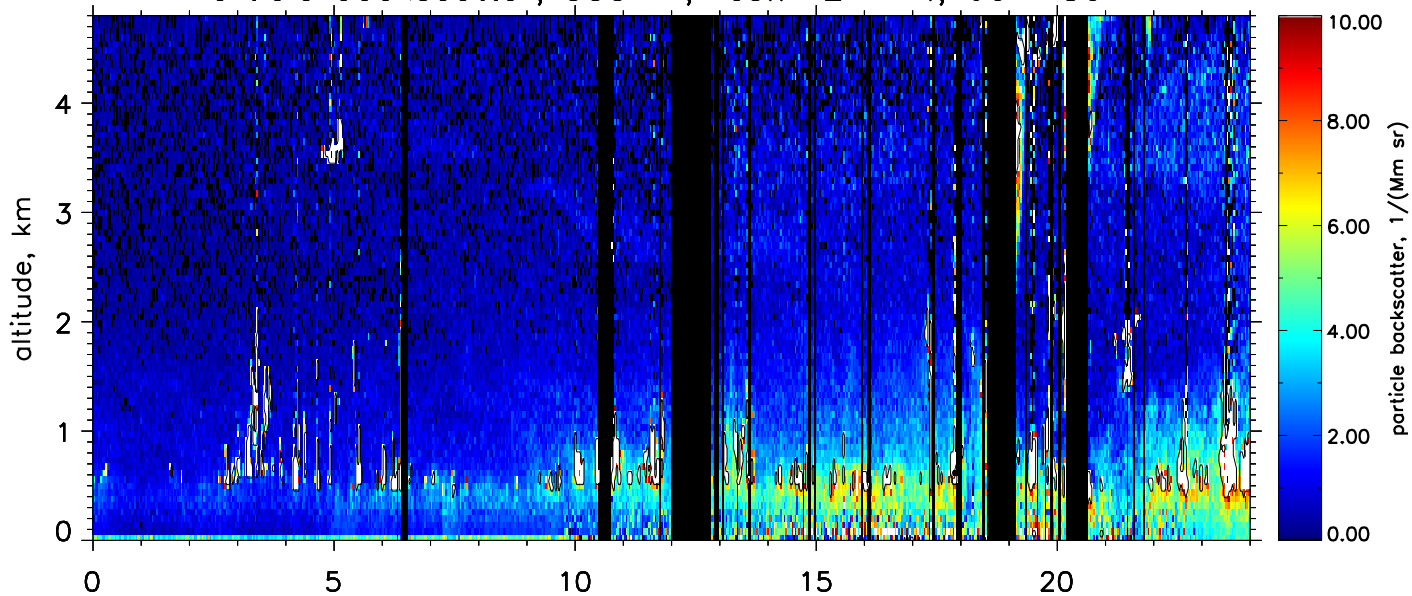
Particle backscatter, 532nm, res.: 2 min., 60–60 m



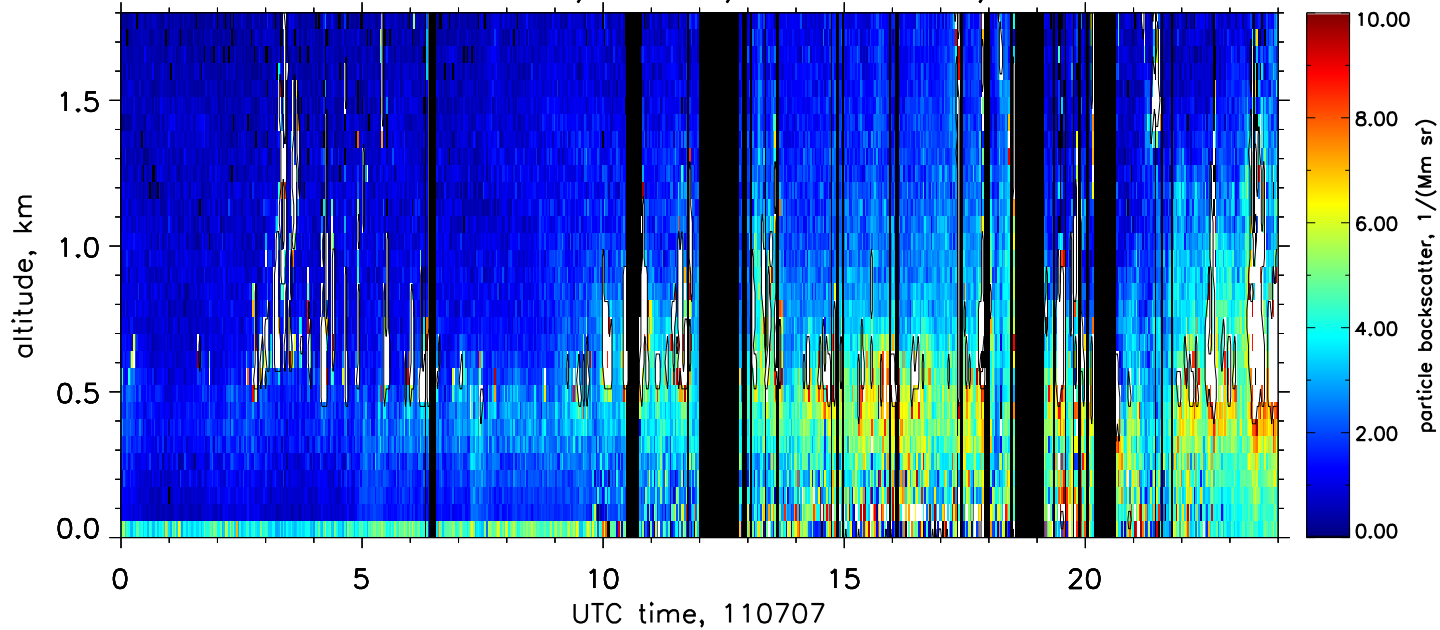
Particle backscatter, 355nm, res.: 2 min., 60–660 m



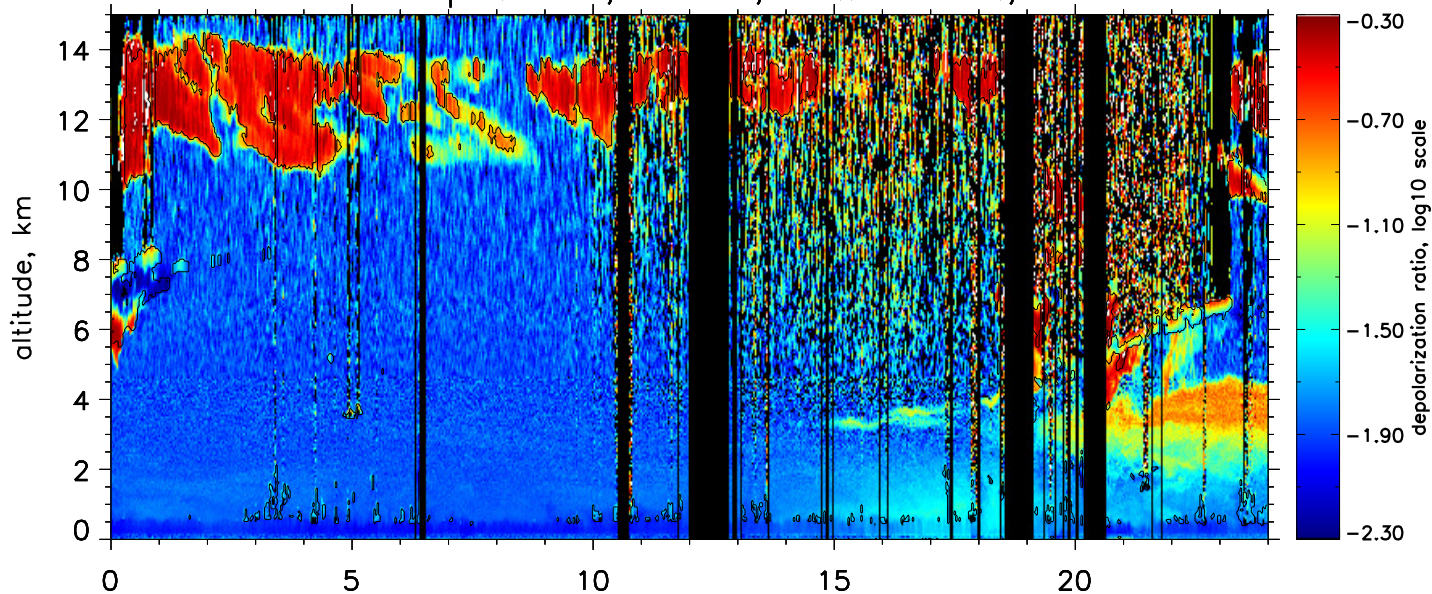
Particle backscatter, 355nm, res.: 2 min., 60–180 m



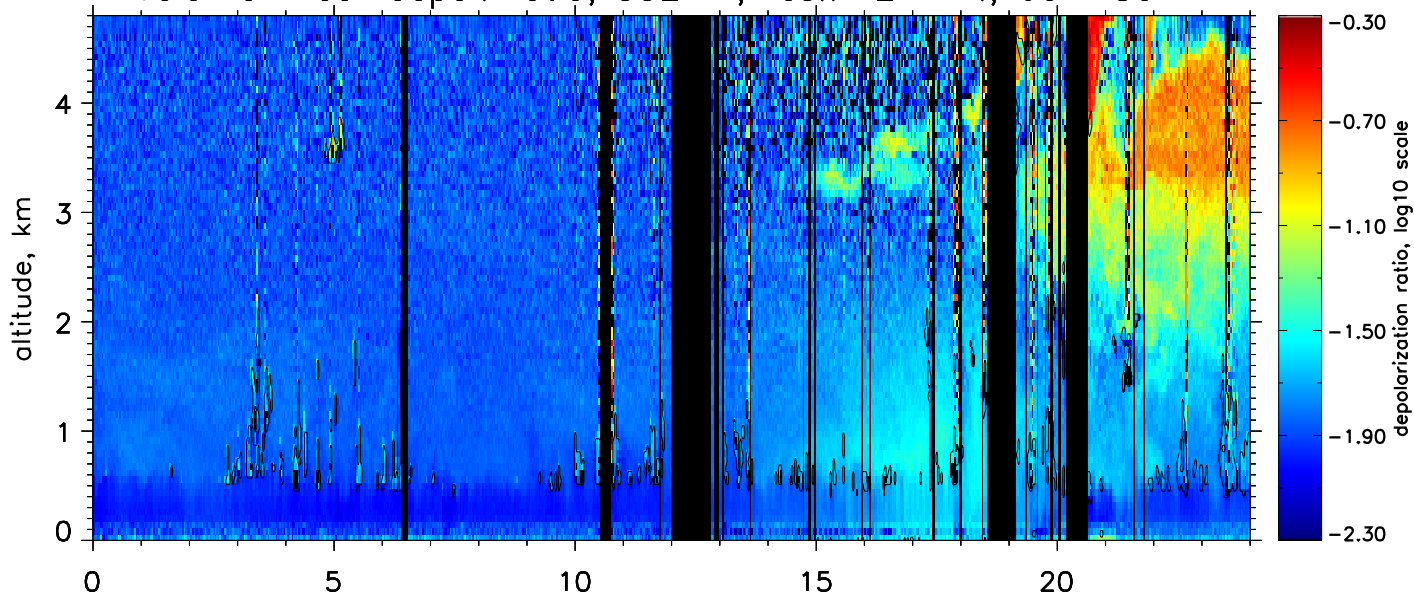
Particle backscatter, 355nm, res.: 2 min., 60–60 m



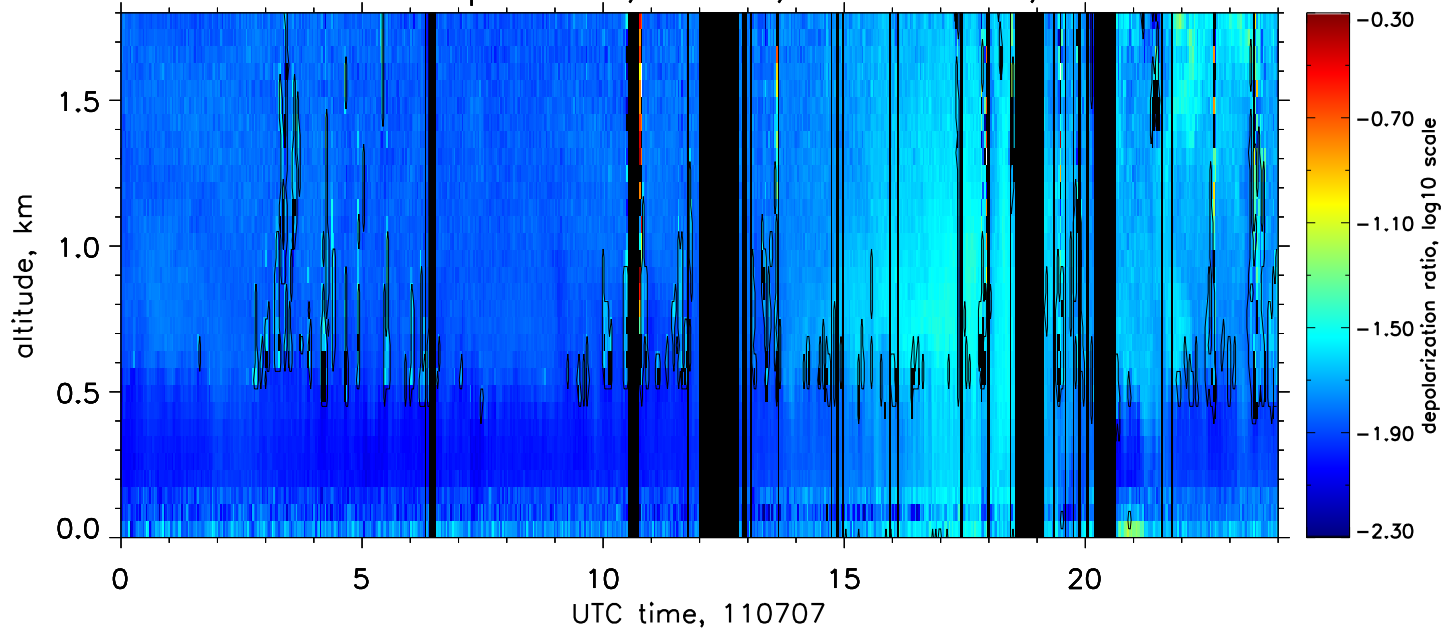
Volume linear depol. ratio, 532nm, res.: 2 min., 60–660 m



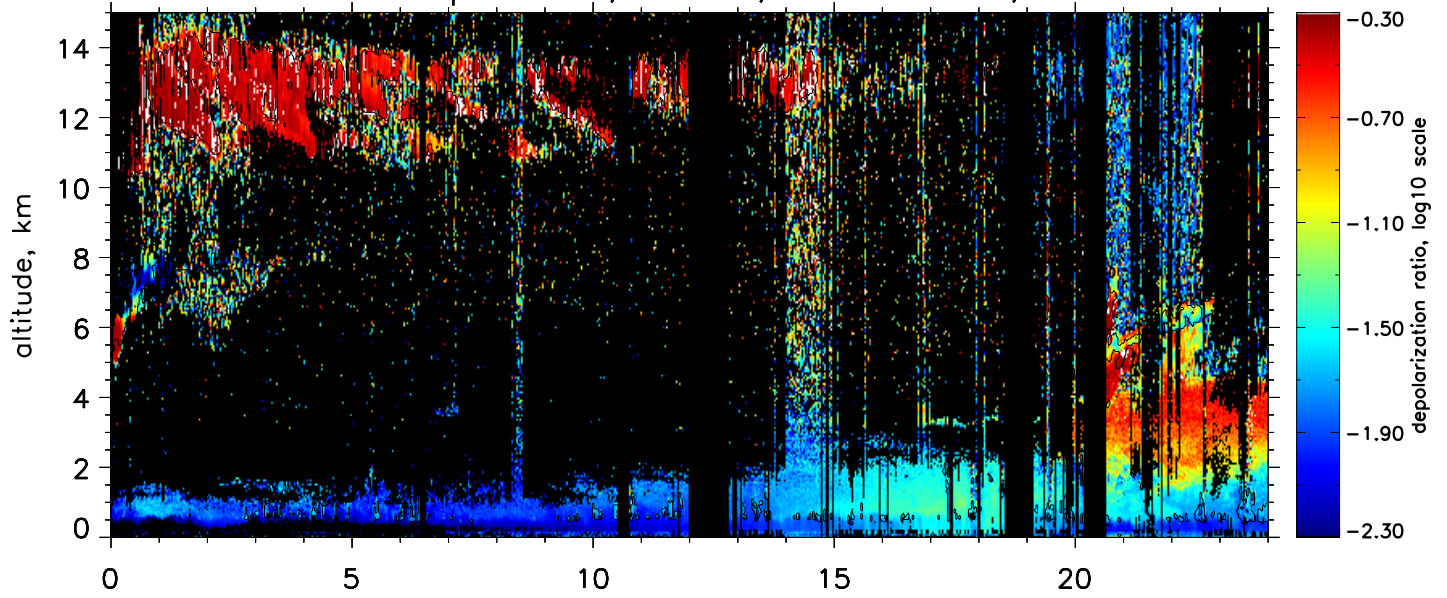
Volume linear depol. ratio, 532nm, res.: 2 min., 60–180 m



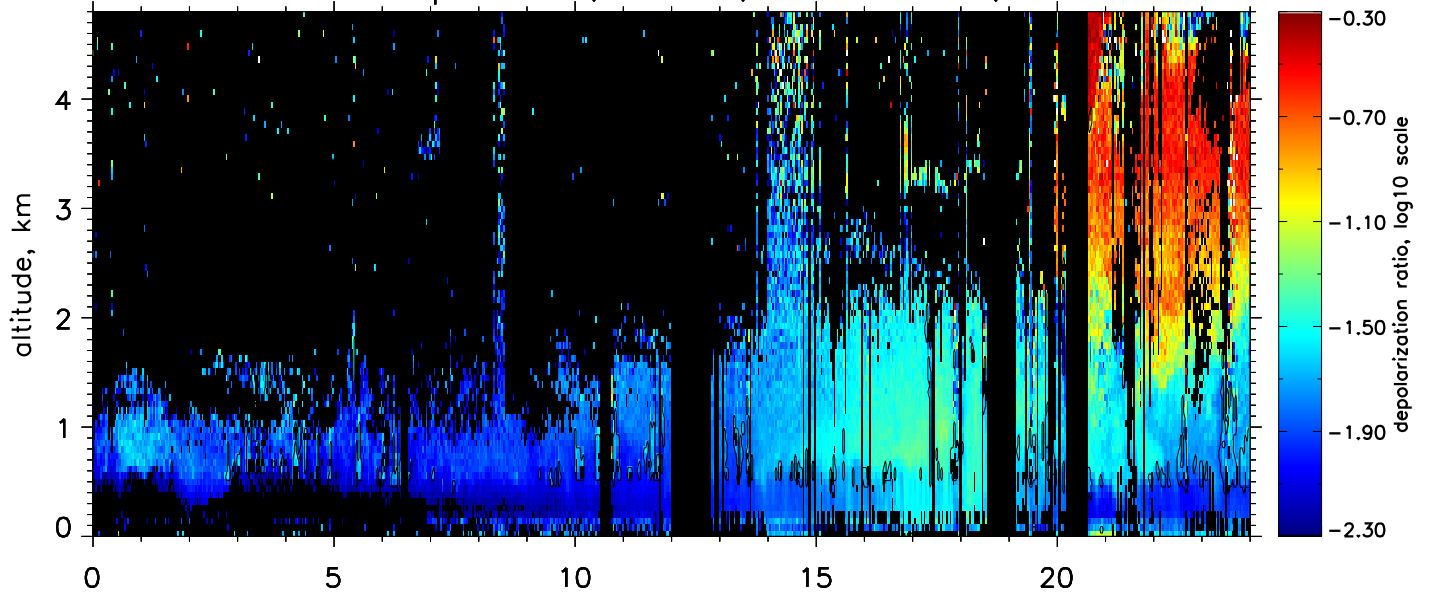
Volume linear depol. ratio, 532nm, res.: 2 min., 60–60 m



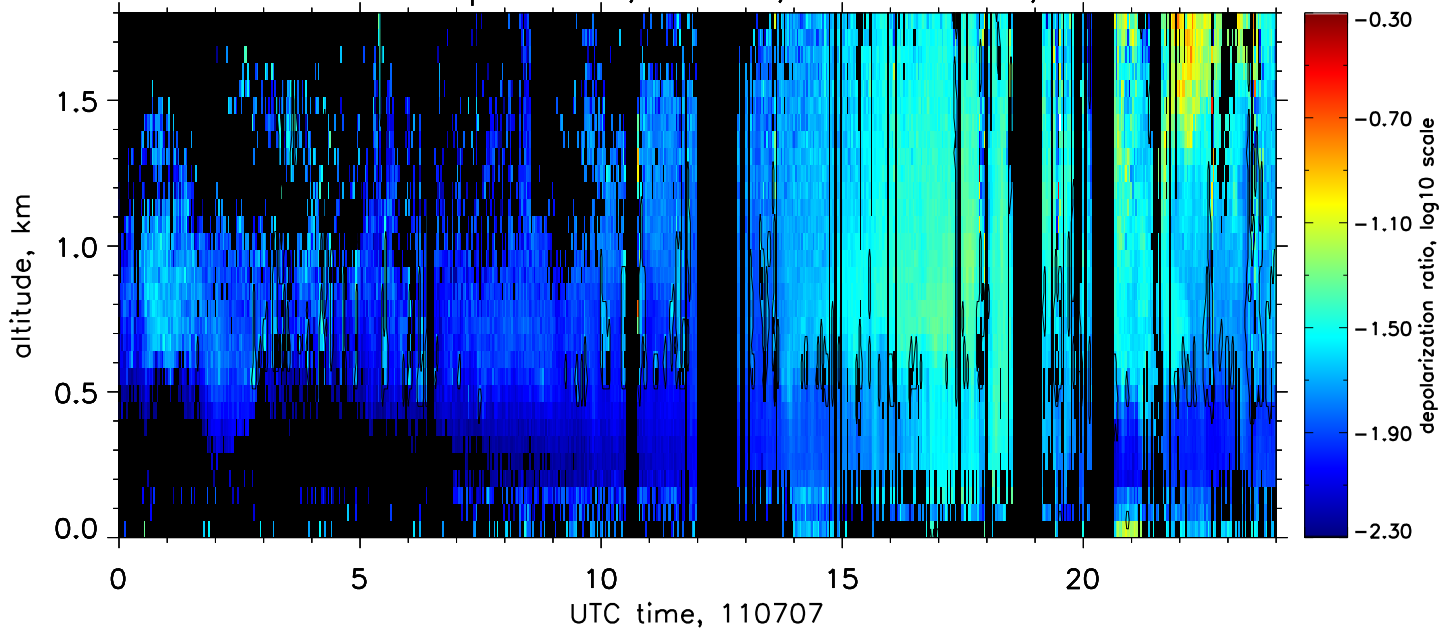
Particle linear depol. ratio, 532nm, res.: 2 min., 60–660 m



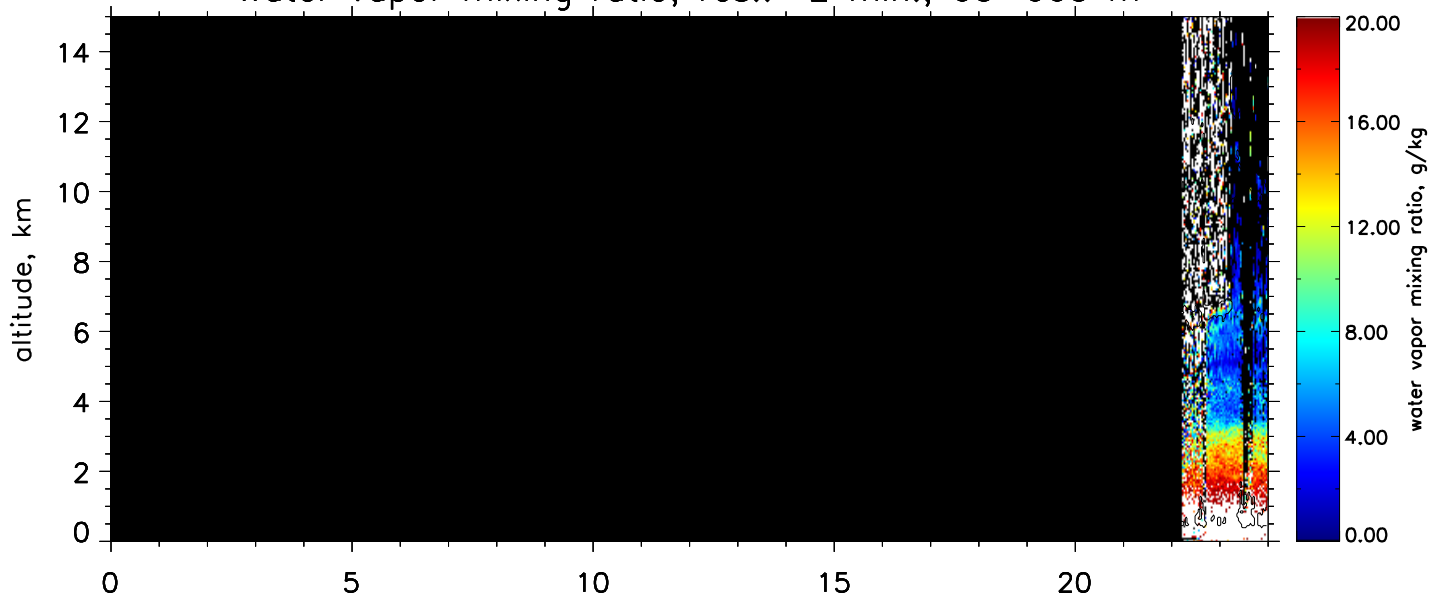
Particle linear depol. ratio, 532nm, res.: 2 min., 60–180 m



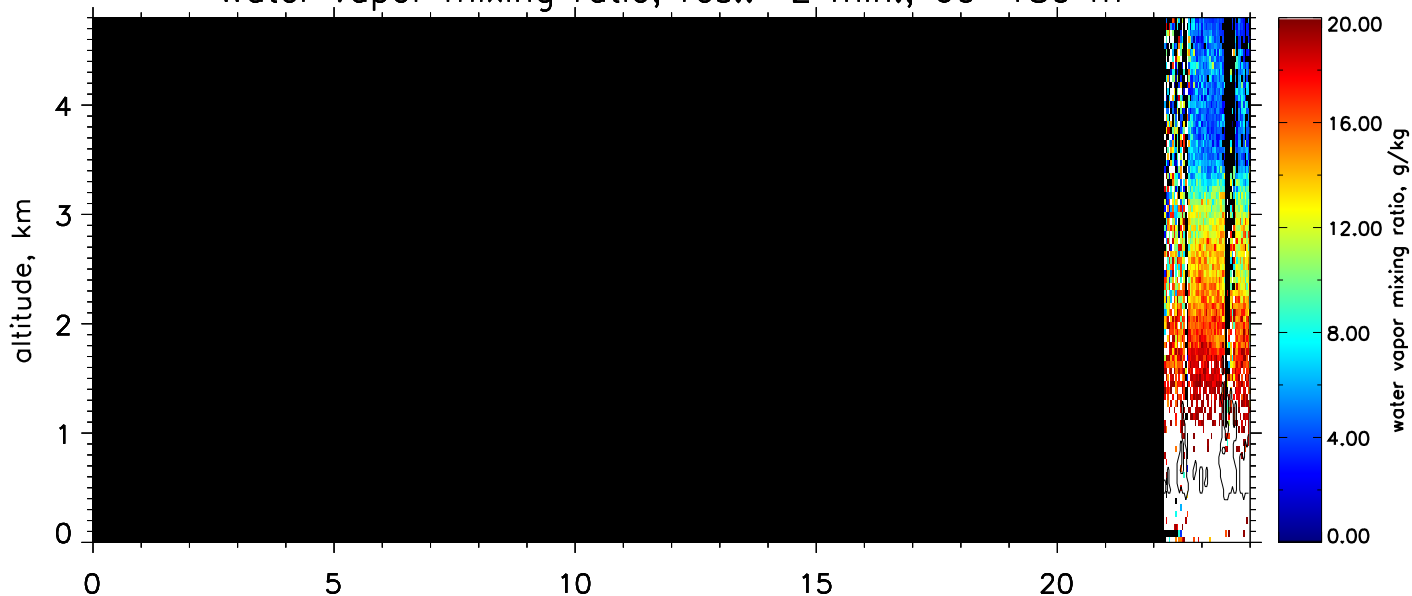
Particle linear depol. ratio, 532nm, res.: 2 min., 60–60 m



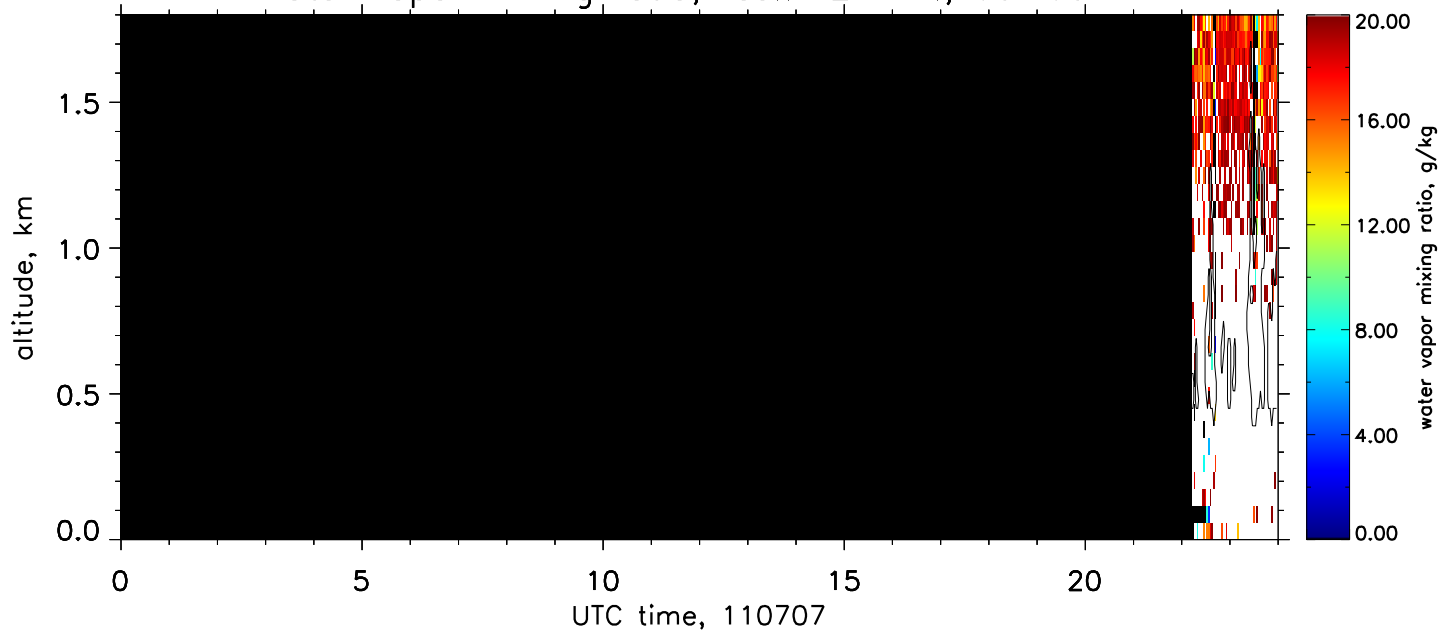
Water vapor mixing ratio, res.: 2 min., 60–660 m



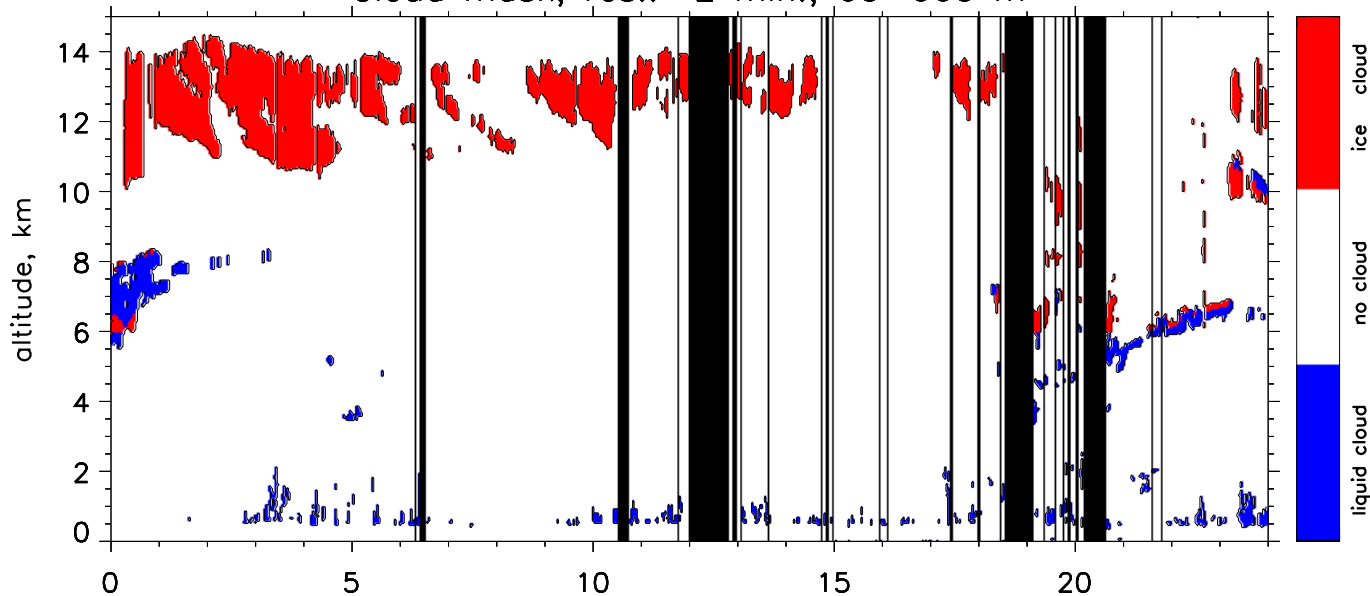
Water vapor mixing ratio, res.: 2 min., 60–180 m



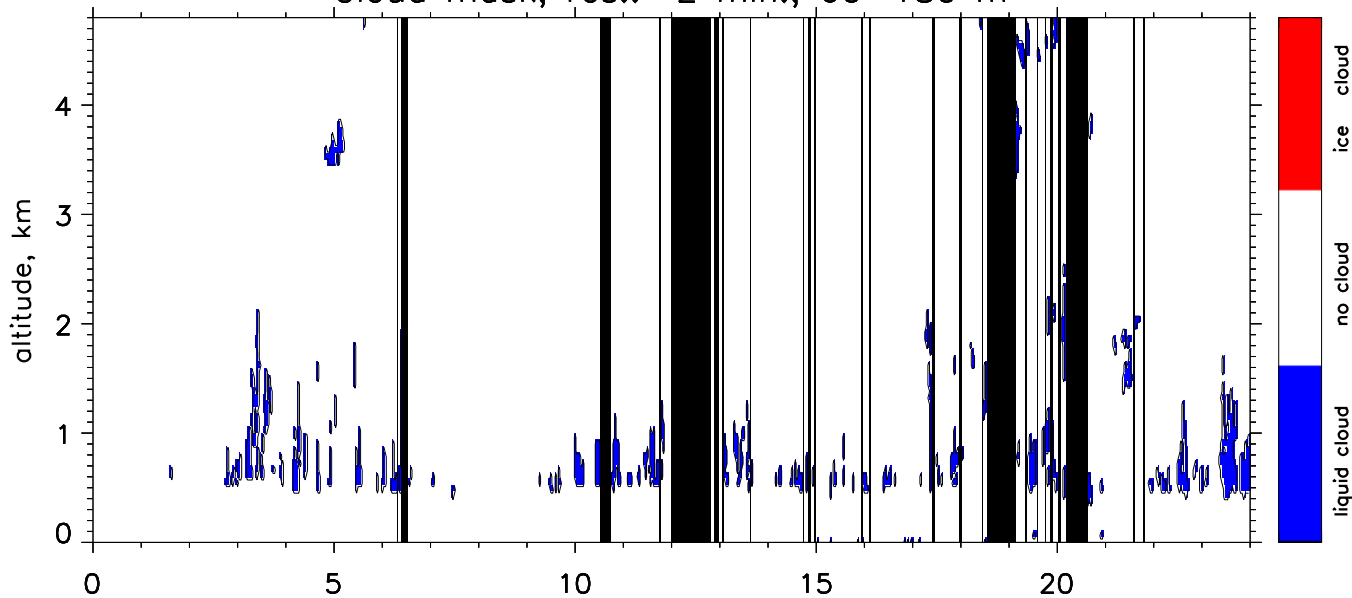
Water vapor mixing ratio, res.: 2 min., 60–60 m



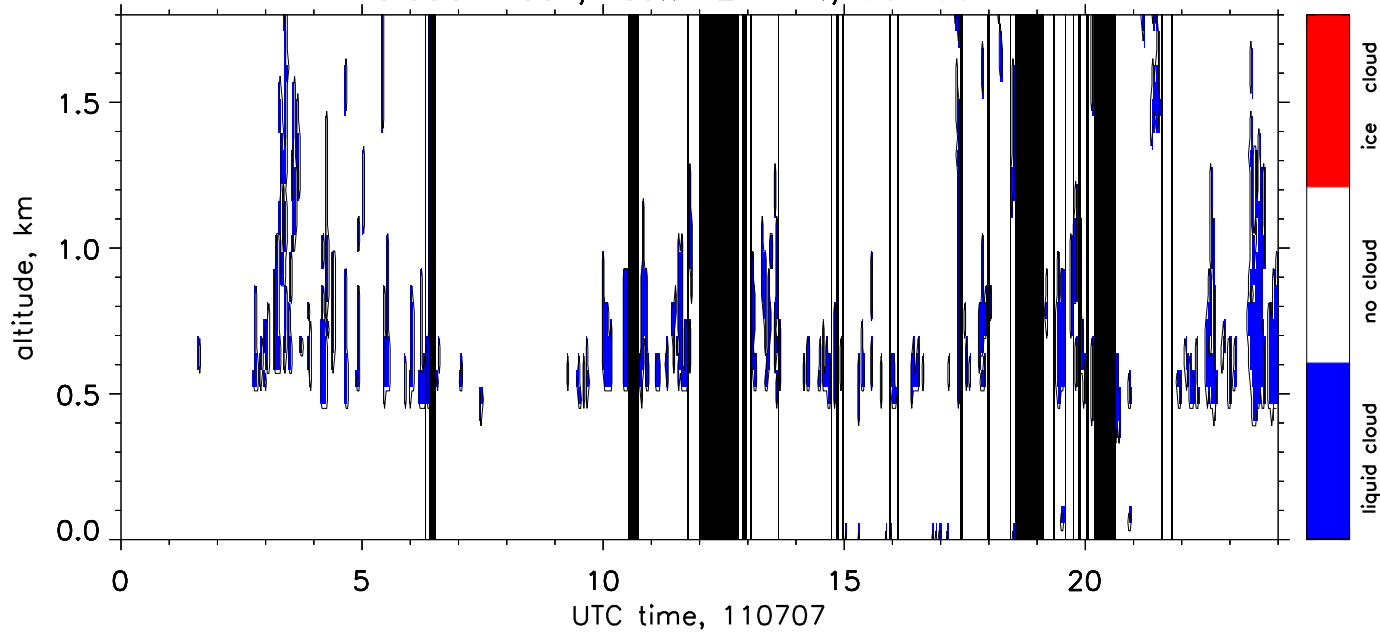
Cloud mask, res.: 2 min., 60–660 m



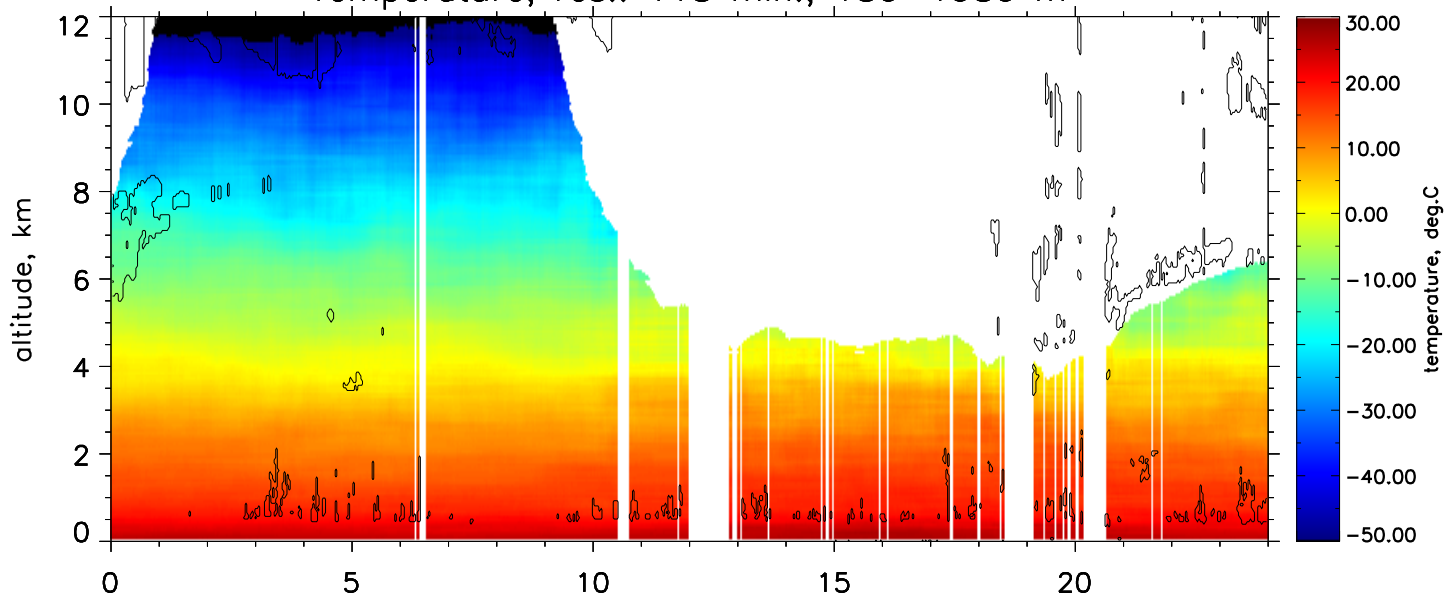
Cloud mask, res.: 2 min., 60–180 m



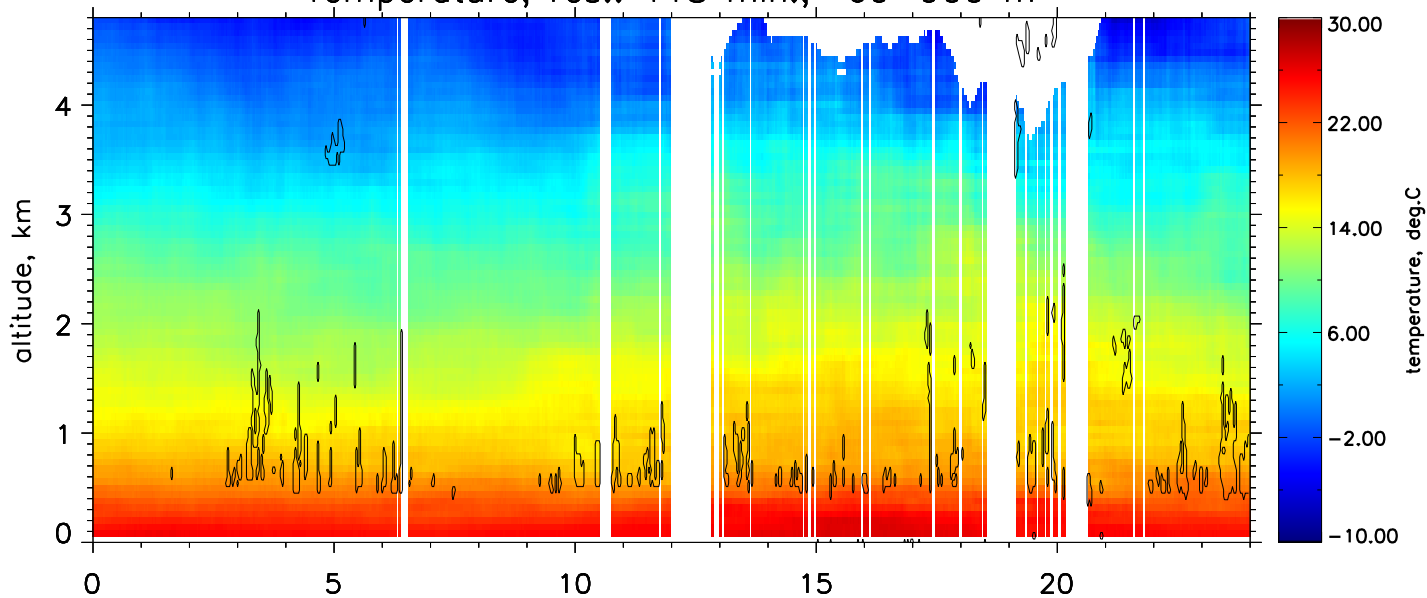
Cloud mask, res.: 2 min., 60–60 m



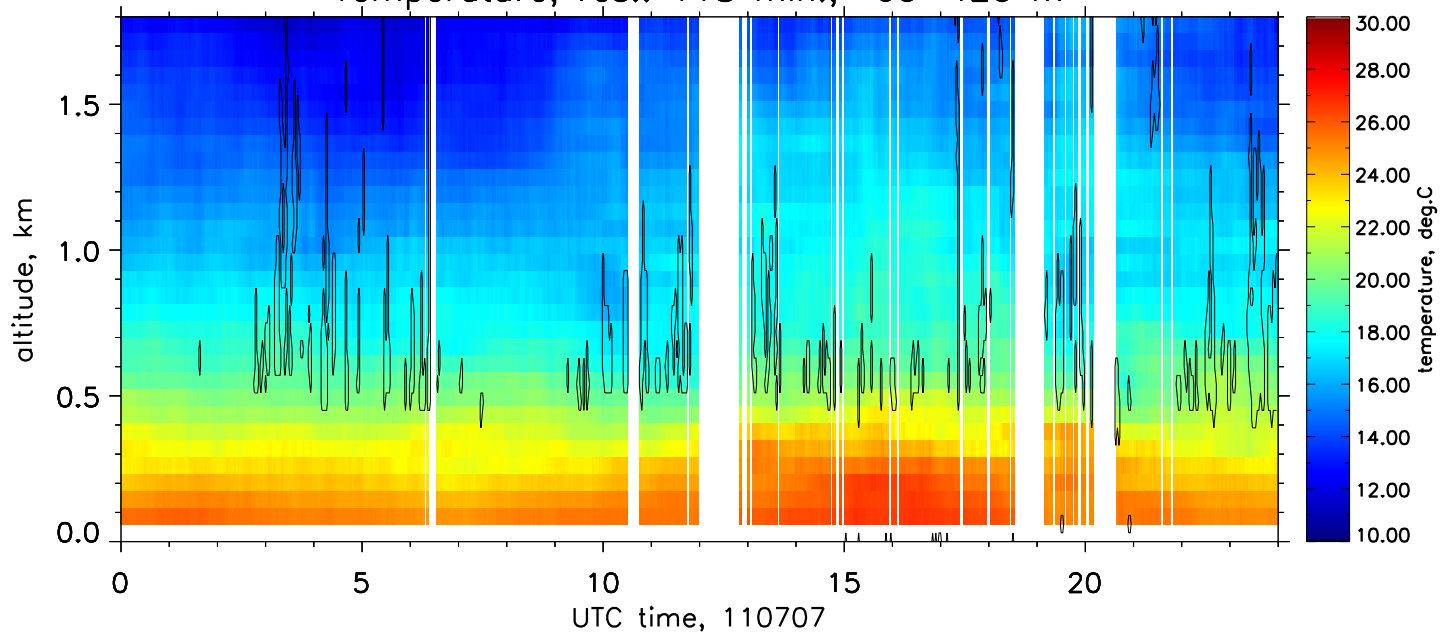
Temperature, res.: 118 min., 180–1980 m



Temperature, res.: 118 min., 60–900 m

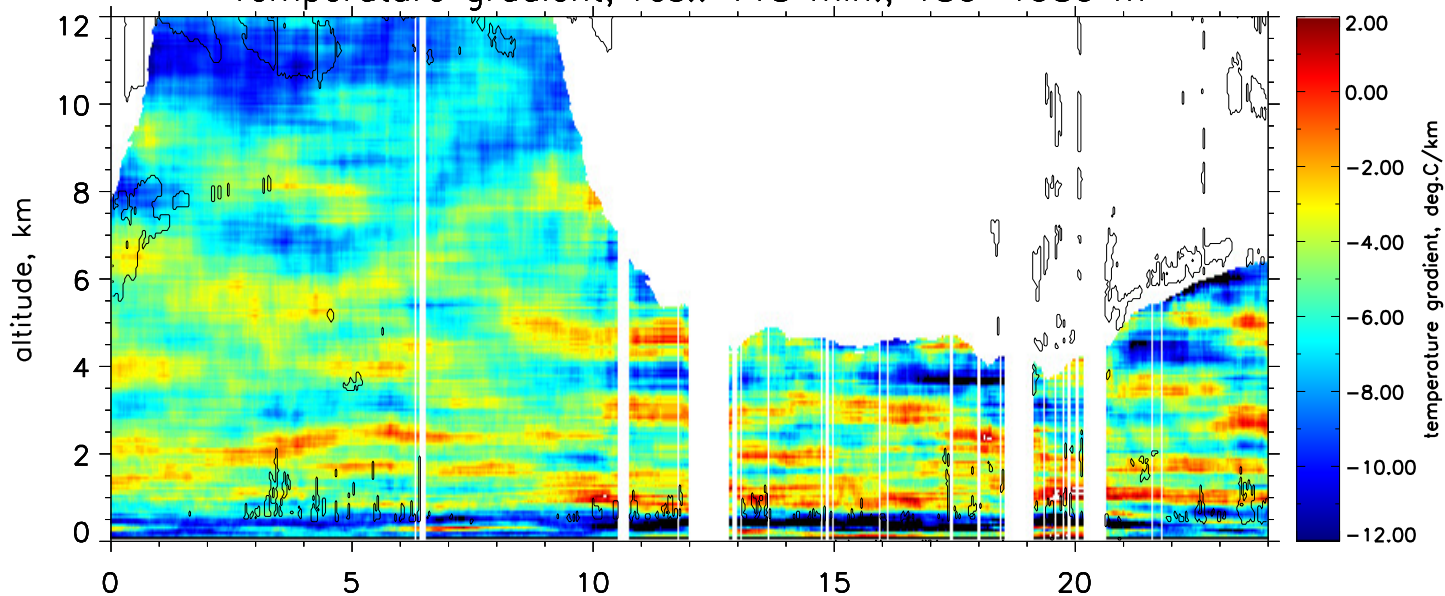


Temperature, res.: 118 min., 60–420 m

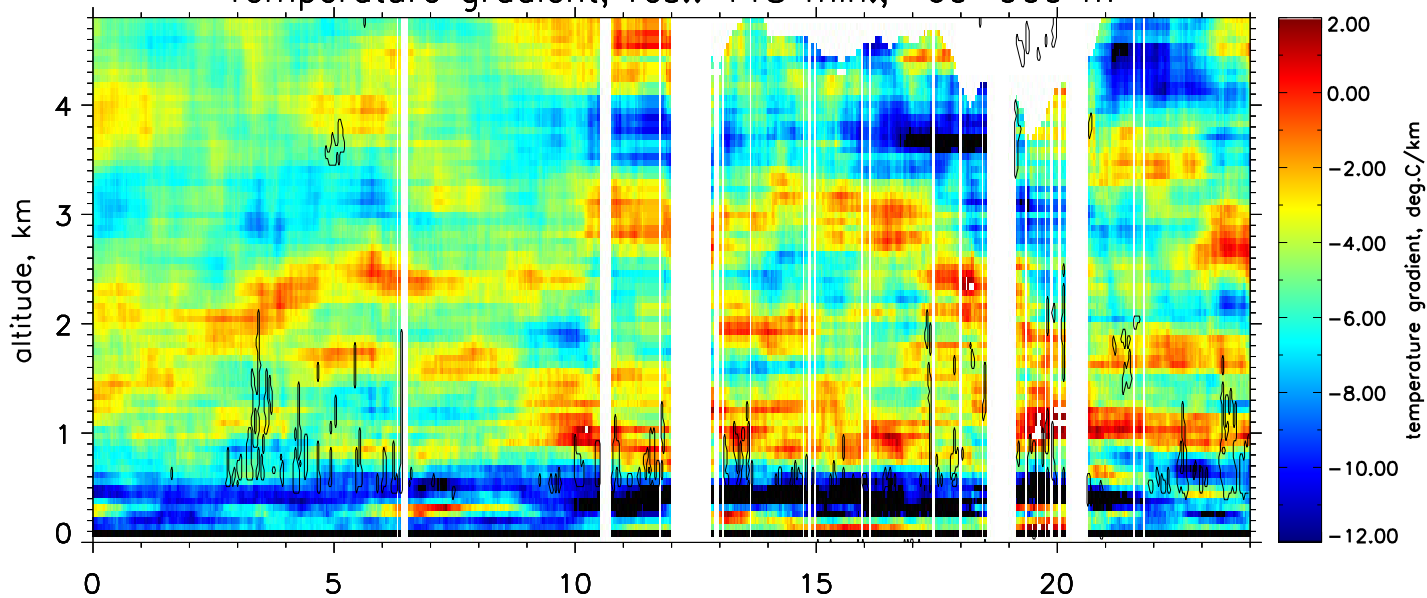




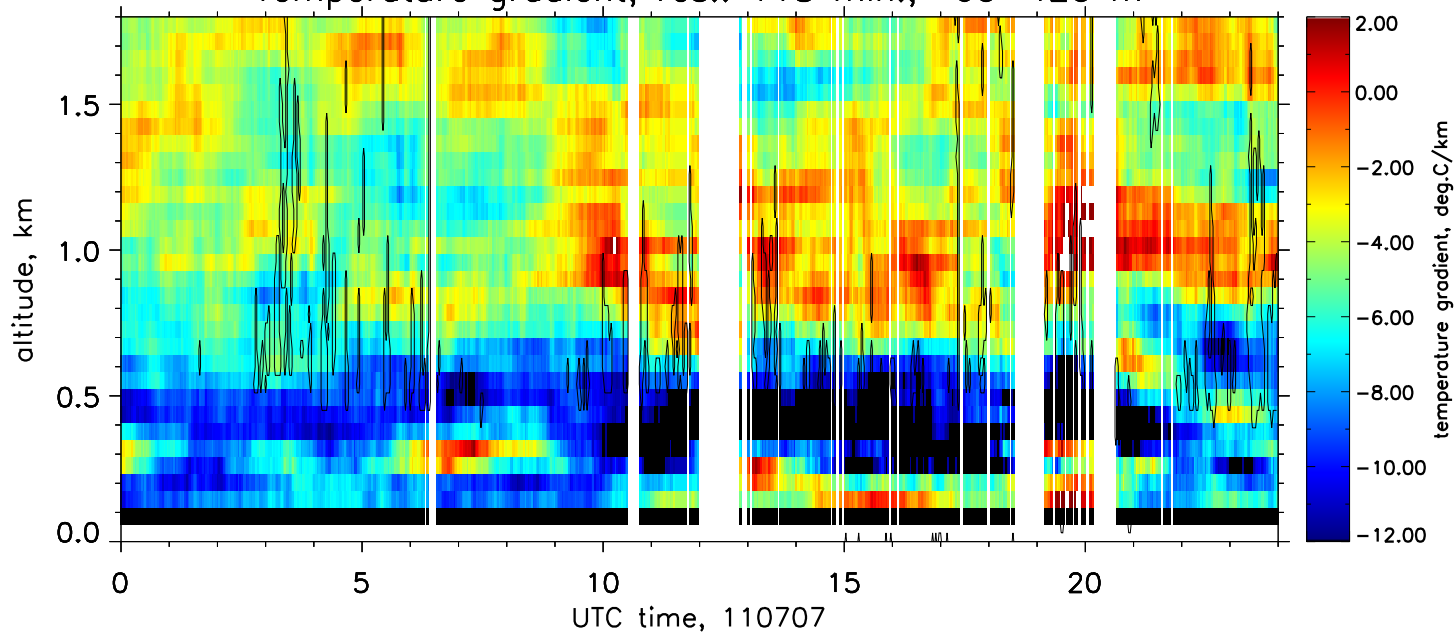
Temperature gradient, res.: 118 min., 180–1980 m

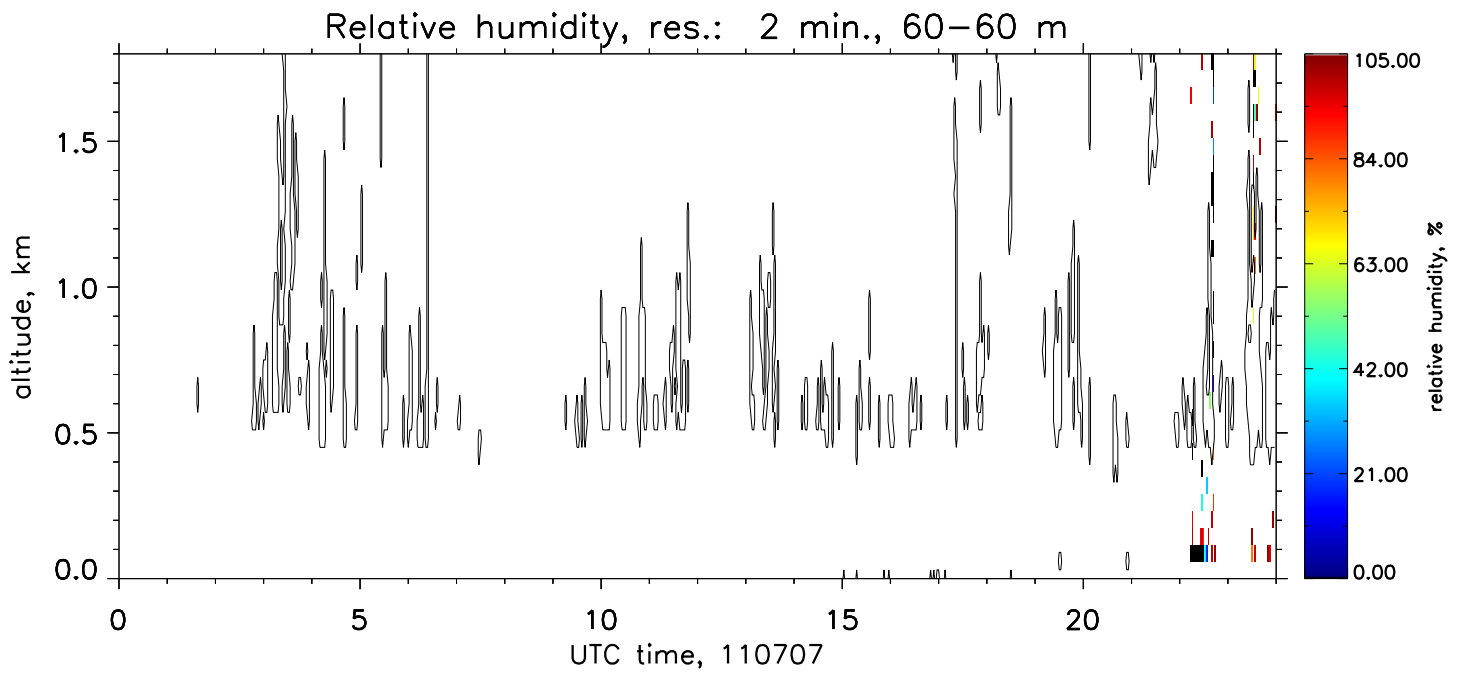
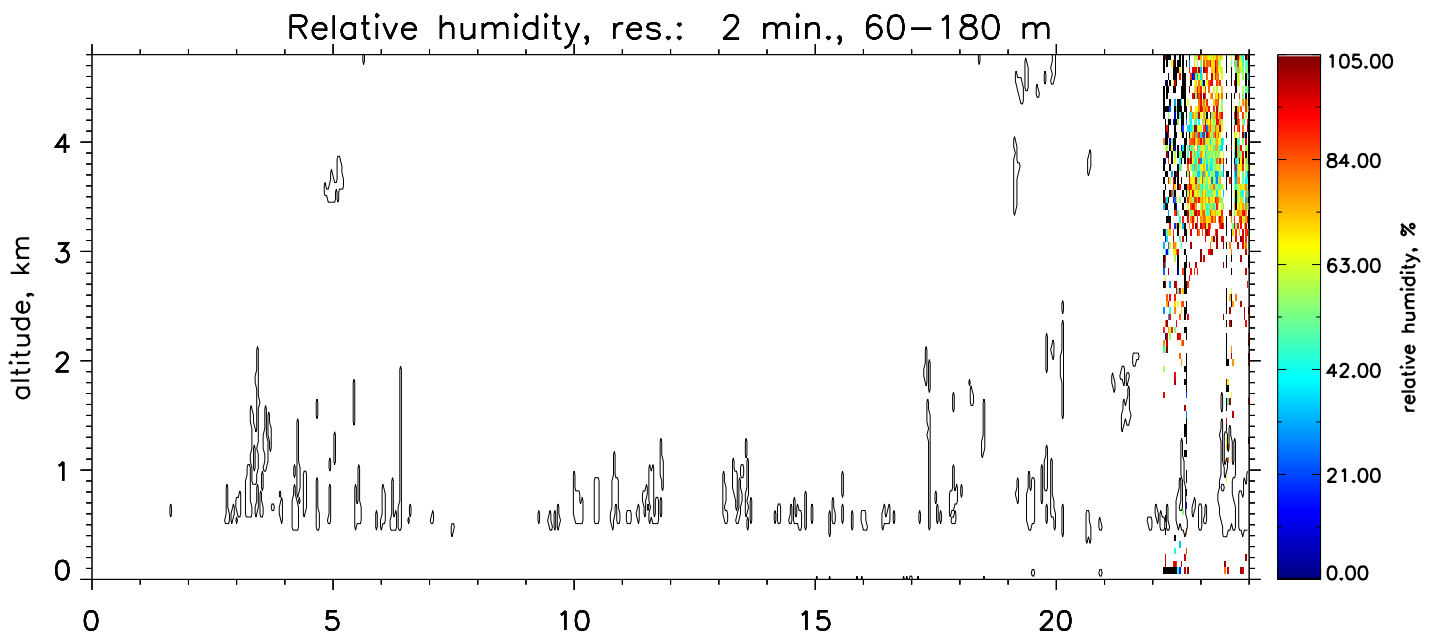
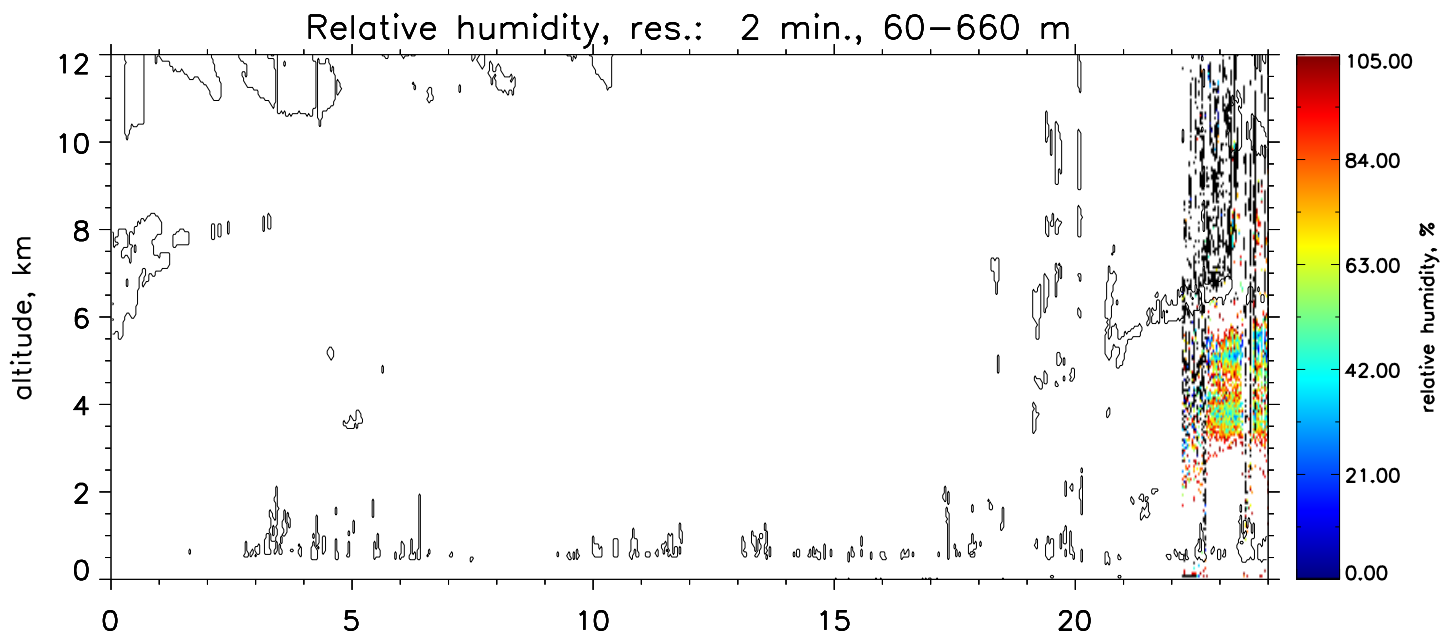


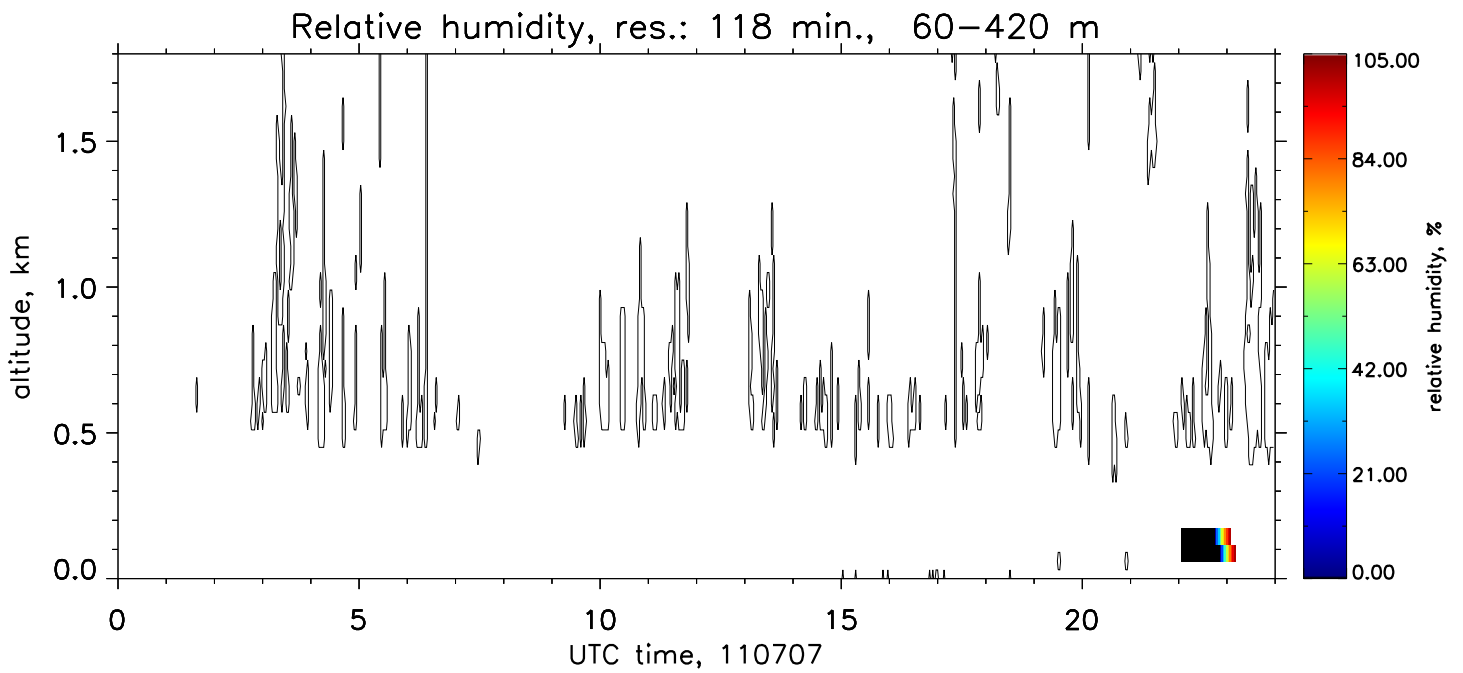
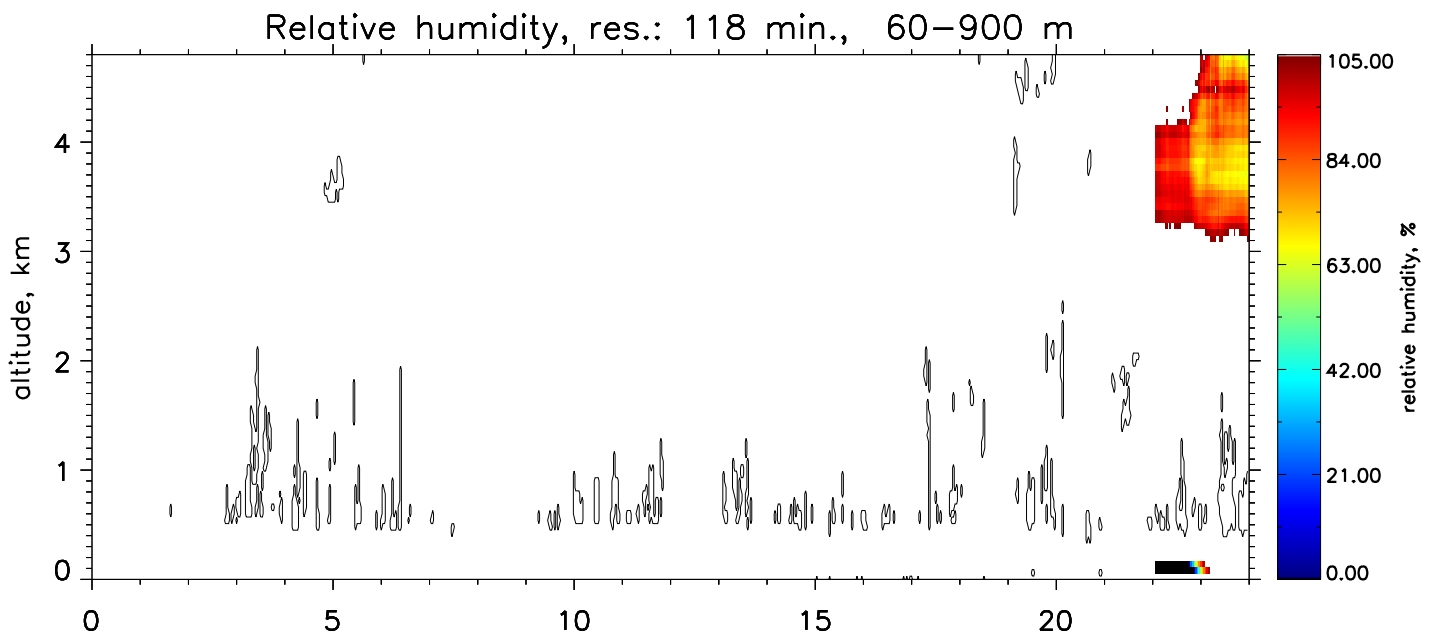
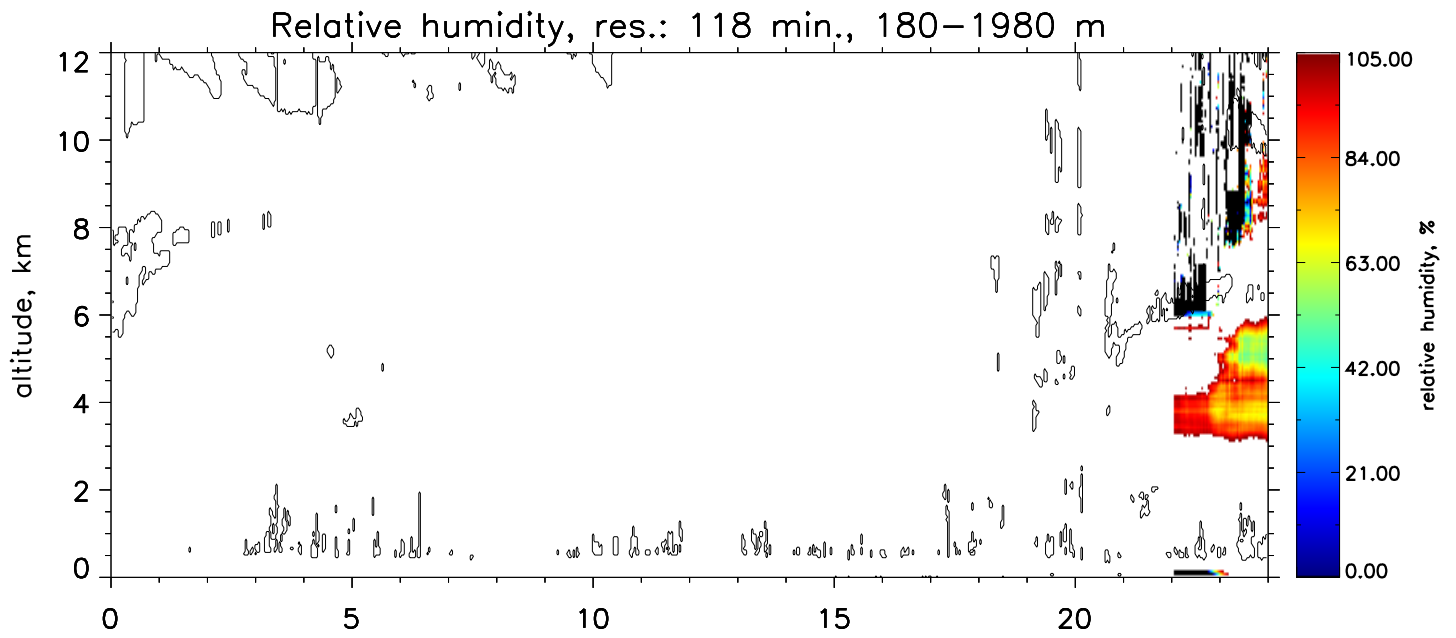
Temperature gradient, res.: 118 min., 60–900 m



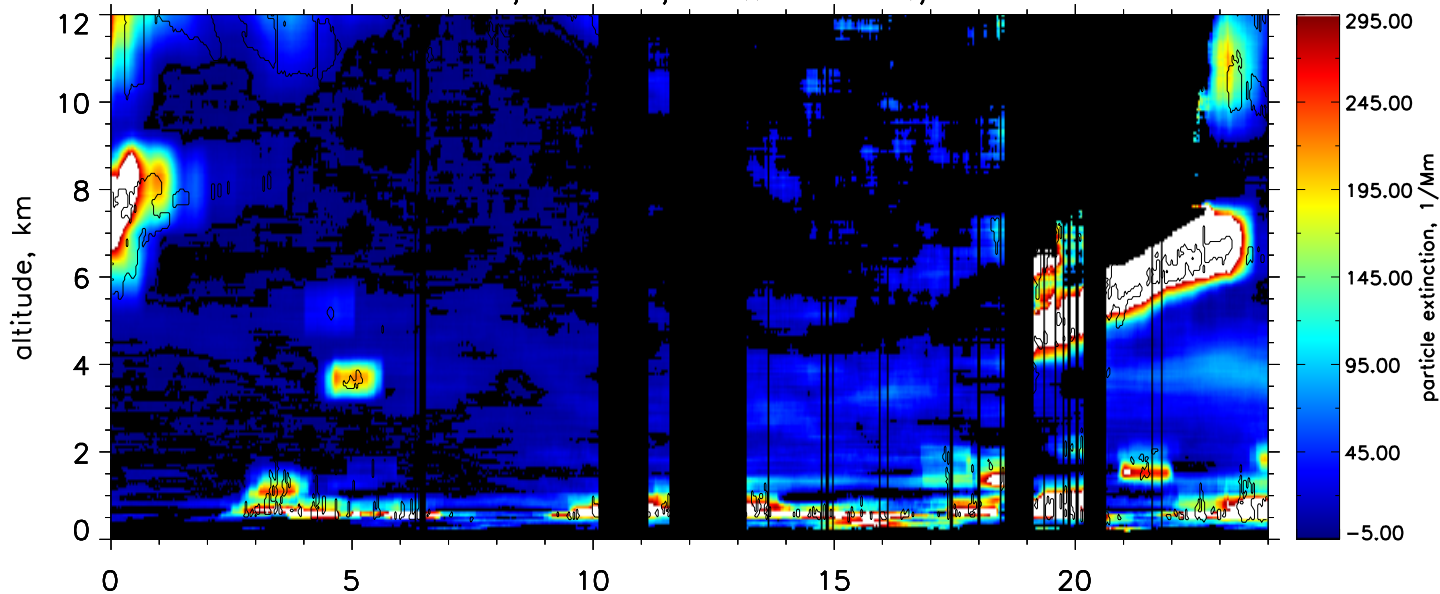
Temperature gradient, res.: 118 min., 60–420 m



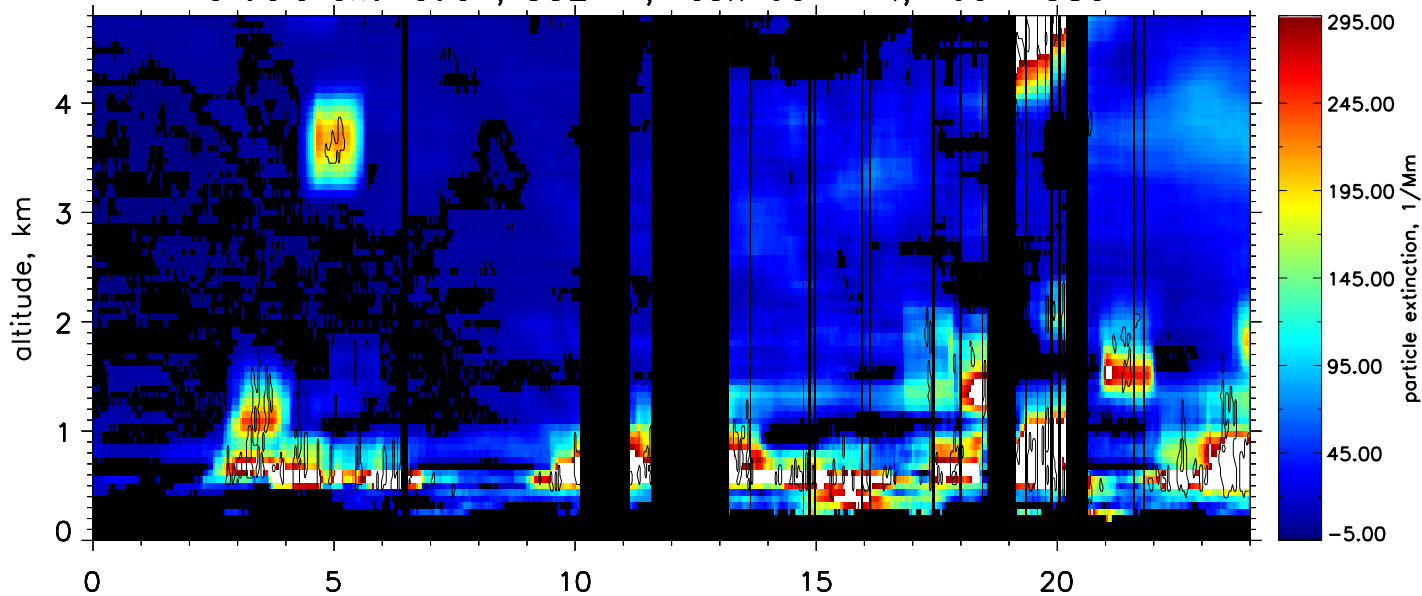




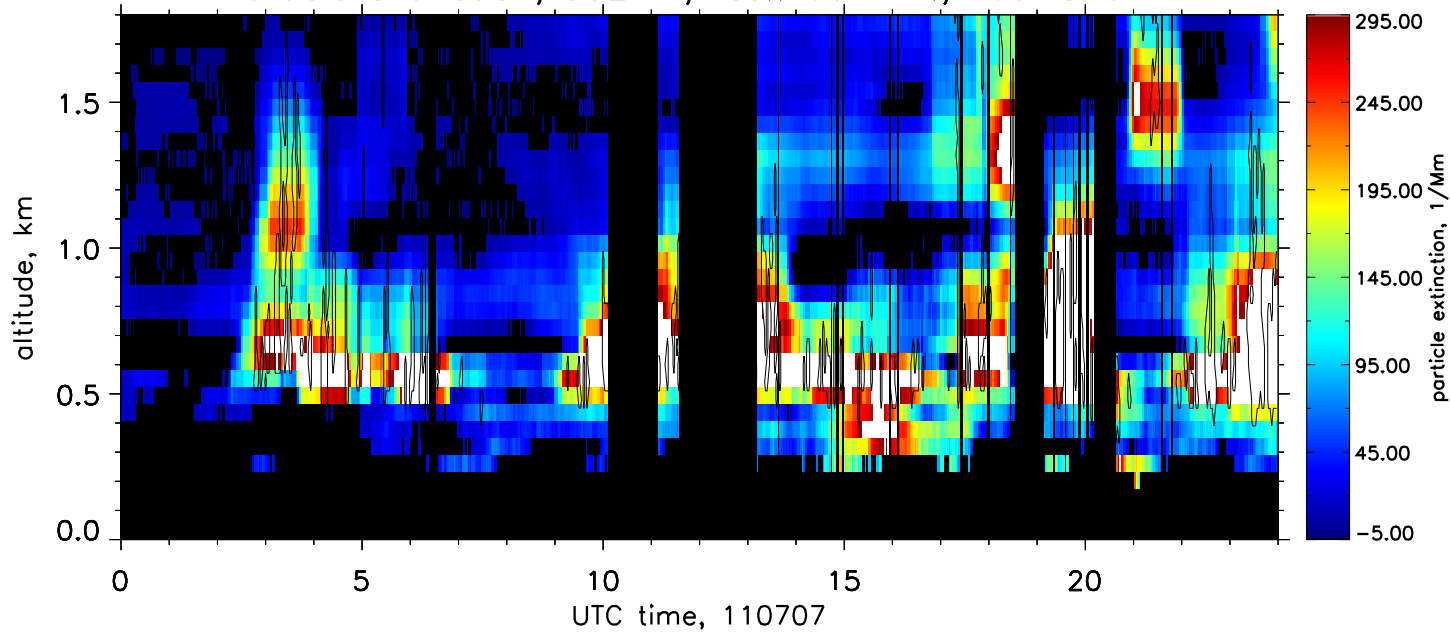
Particle extinction, 532nm, res.: 60 min., 180–3300 m



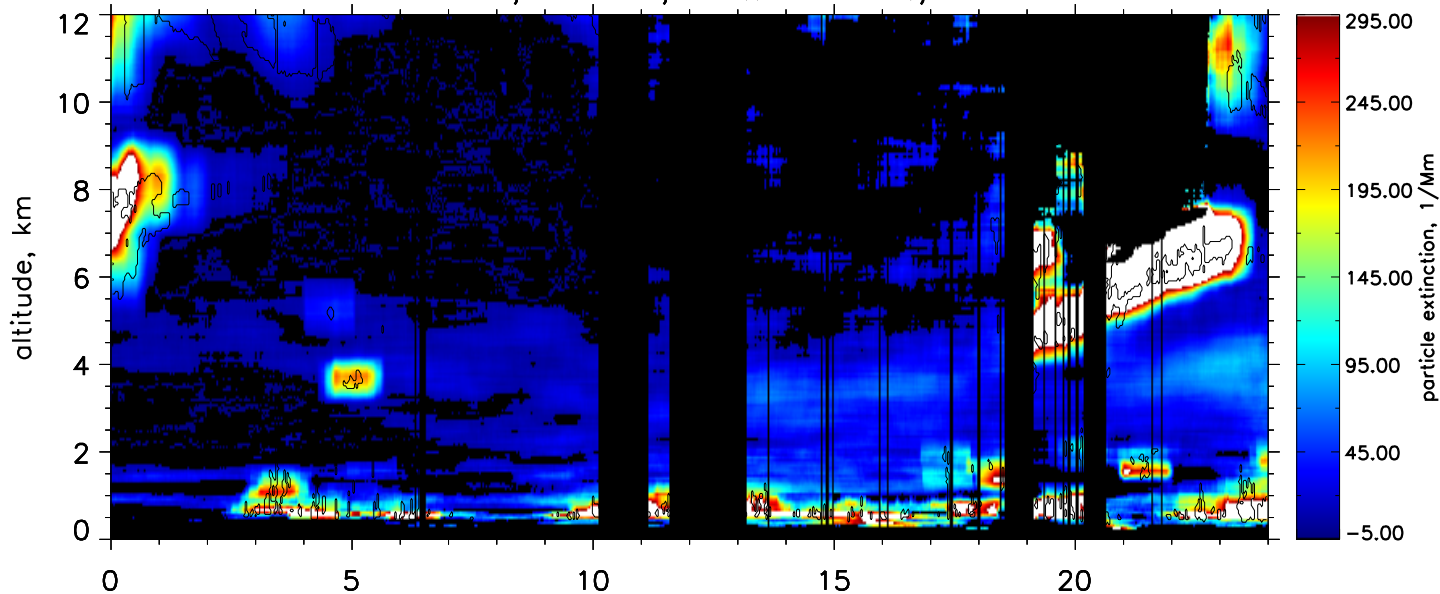
Particle extinction, 532nm, res.: 60 min., 60–1380 m



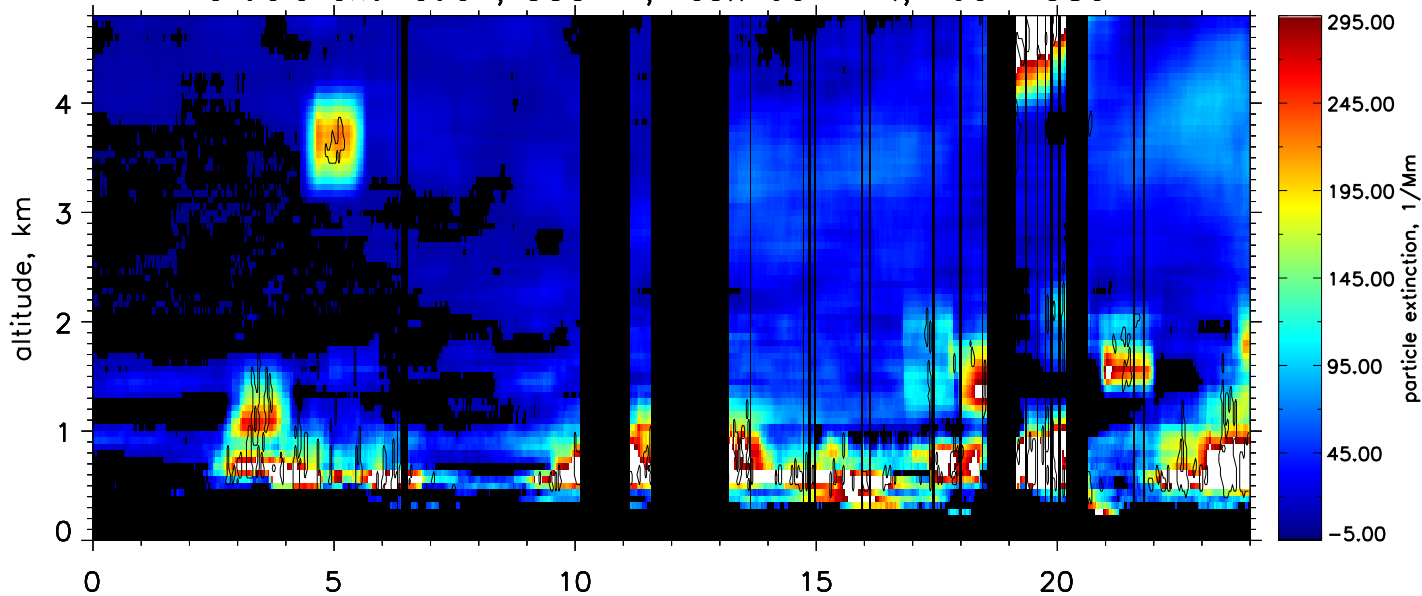
Particle extinction, 532nm, res.: 60 min., 60–540 m



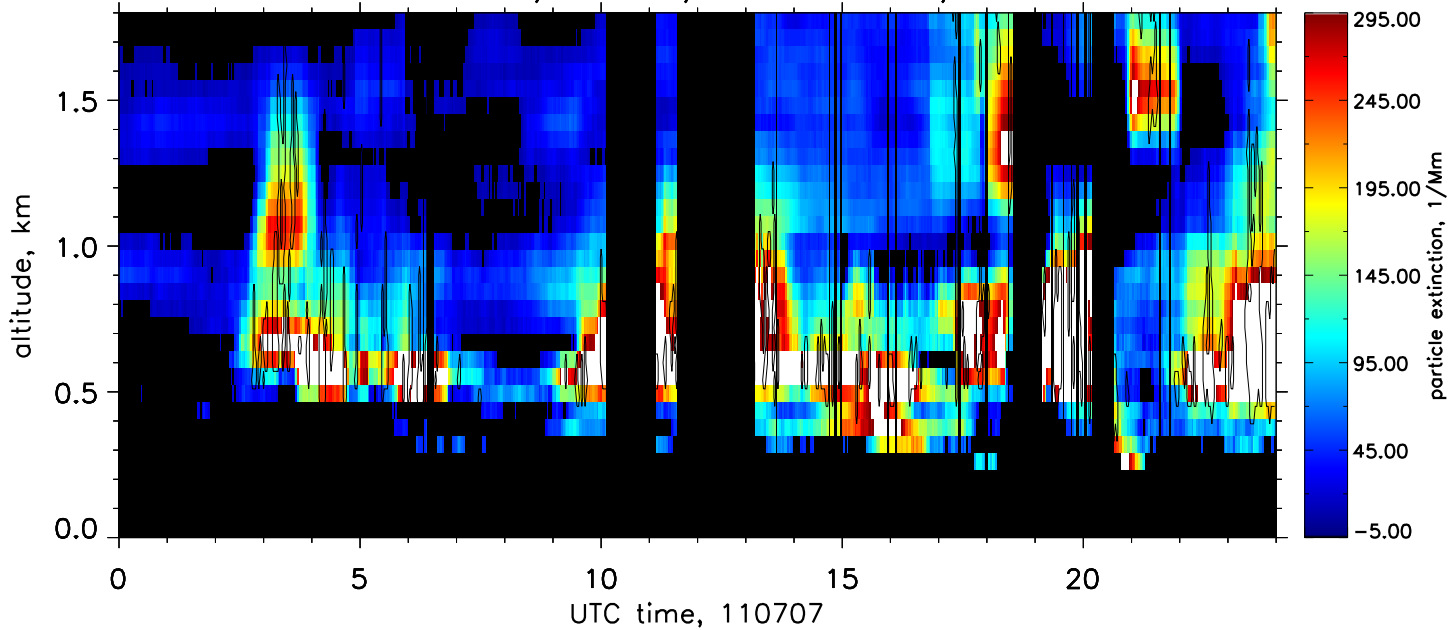
Particle extinction, 355nm, res.: 60 min., 180–3300 m



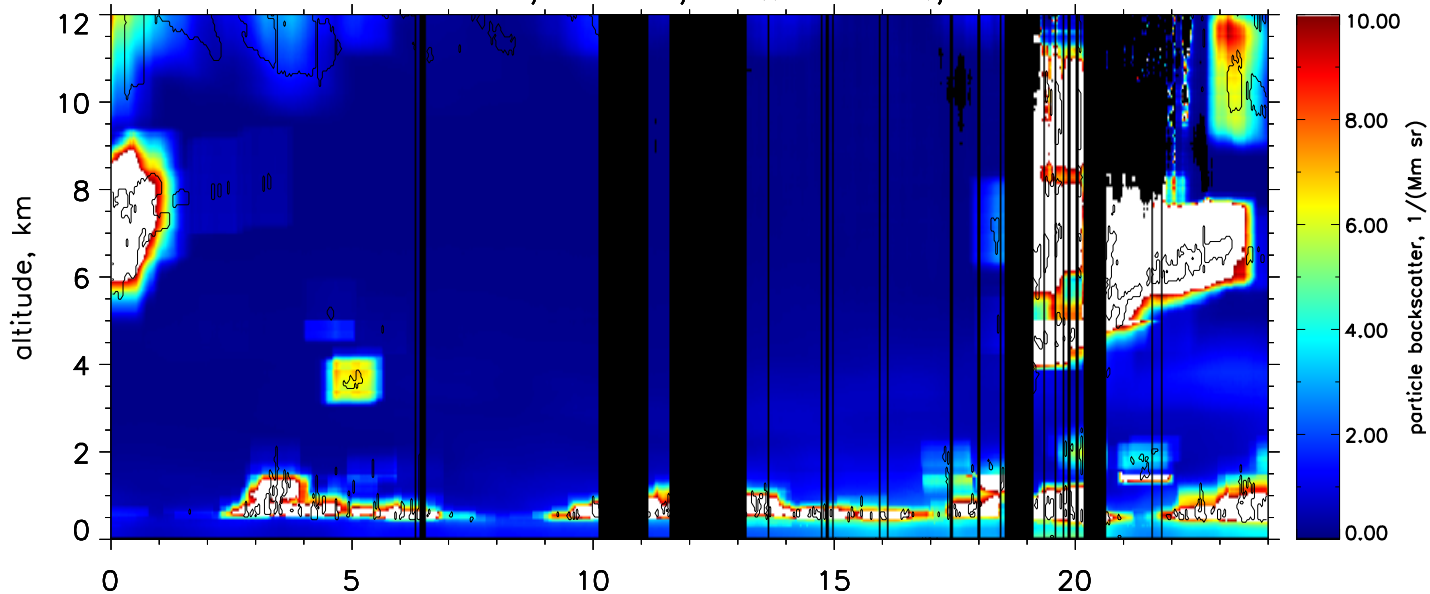
Particle extinction, 355nm, res.: 60 min., 60–1380 m



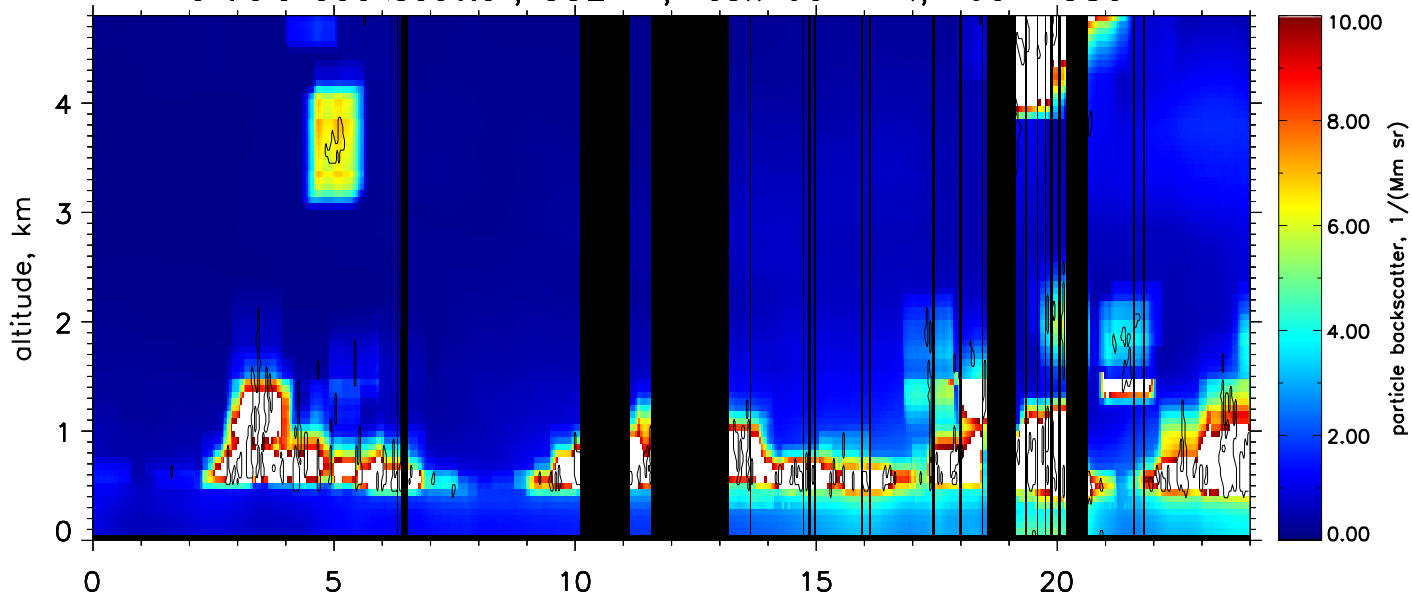
Particle extinction, 355nm, res.: 60 min., 60–540 m



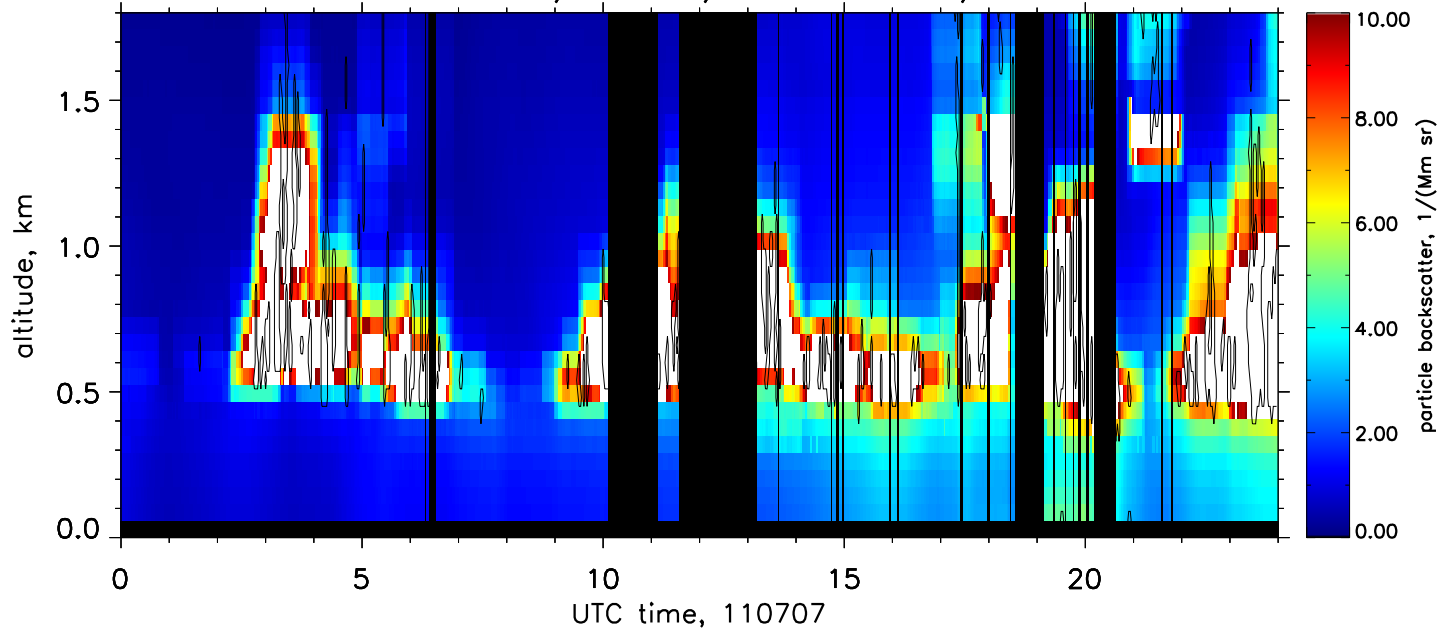
Particle backscatter, 532nm, res.: 60 min., 180–3300 m



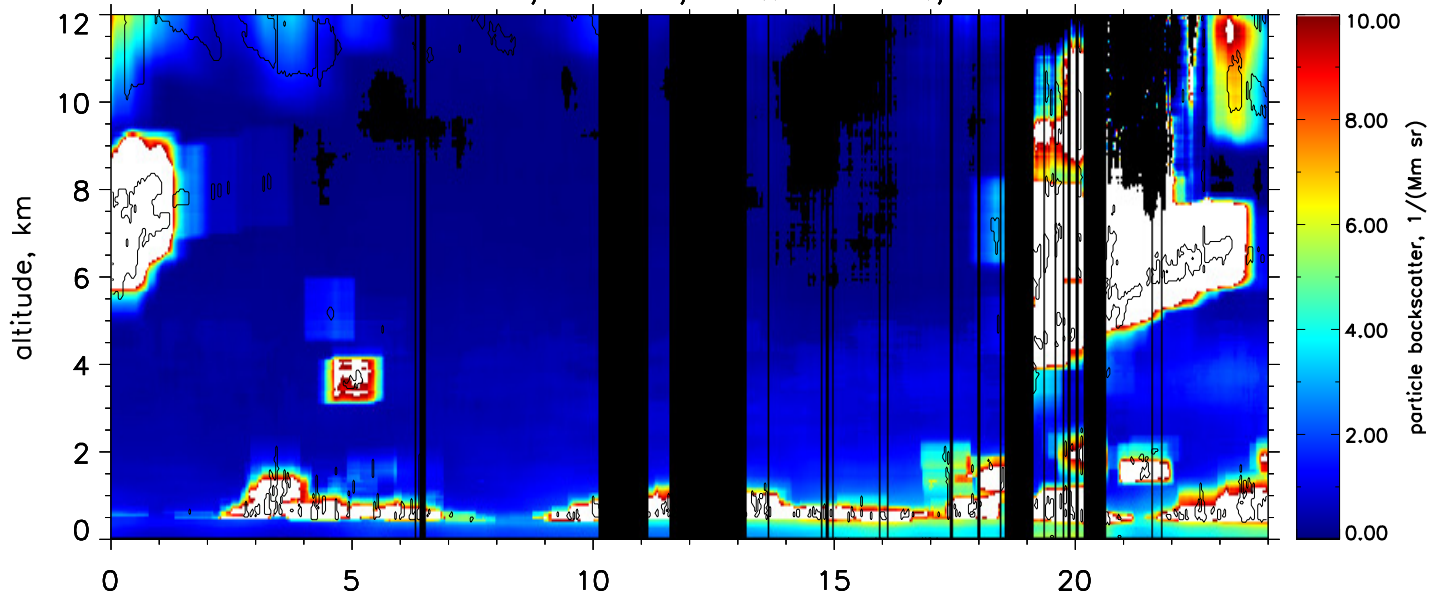
Particle backscatter, 532nm, res.: 60 min., 60–1380 m



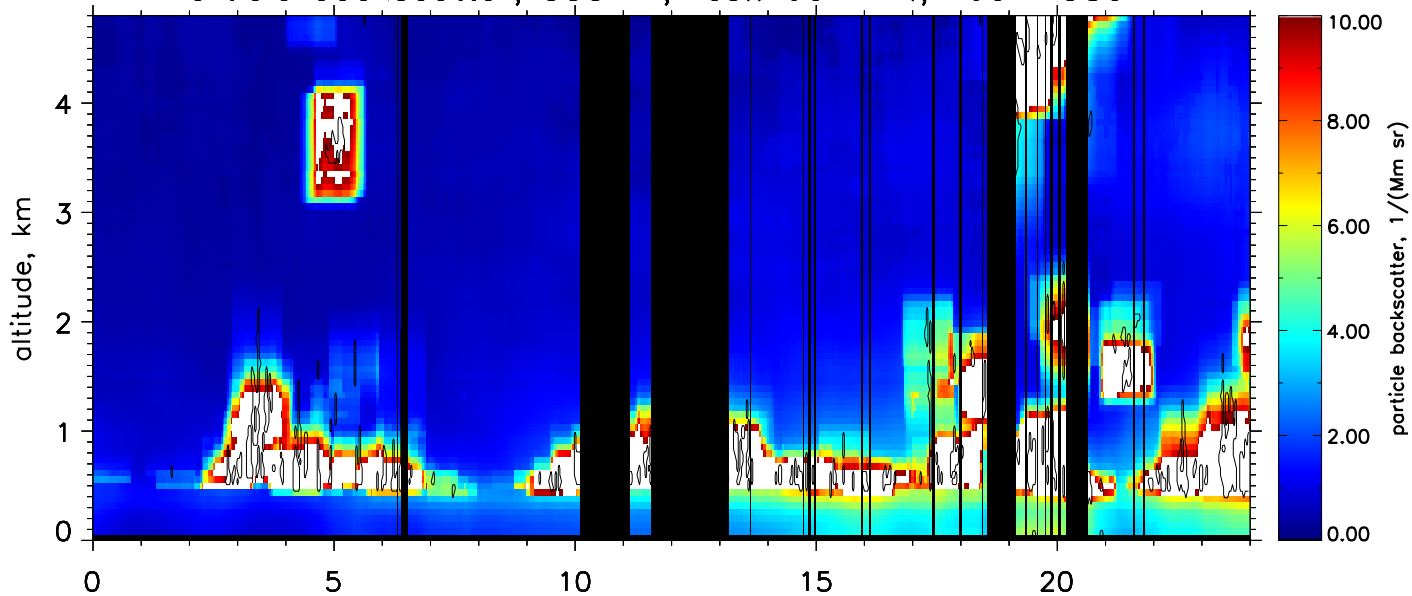
Particle backscatter, 532nm, res.: 60 min., 60–540 m



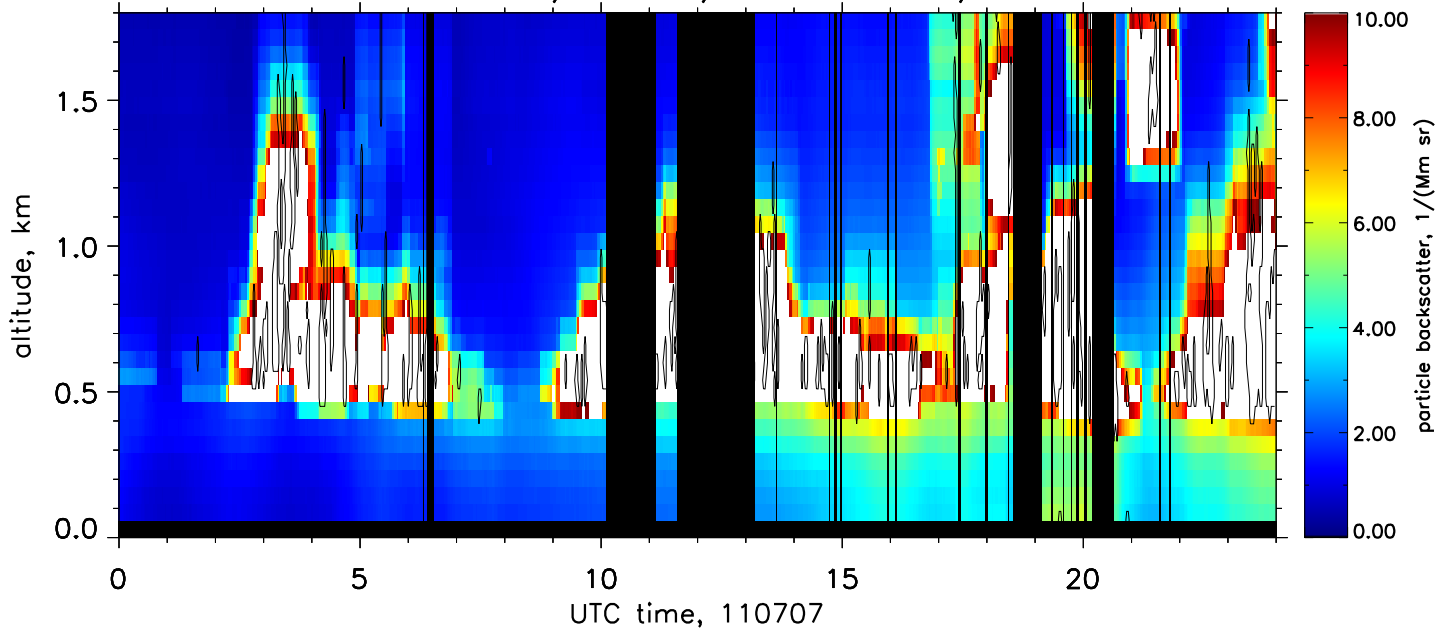
Particle backscatter, 355nm, res.: 60 min., 180–3300 m



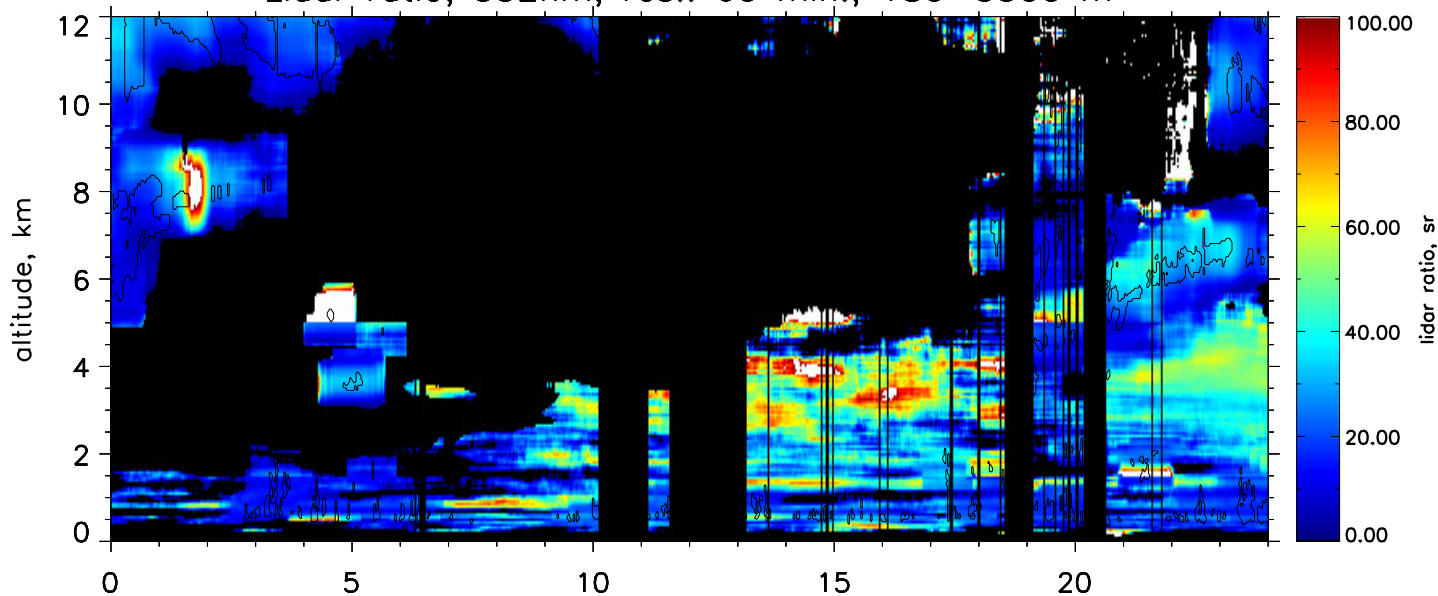
Particle backscatter, 355nm, res.: 60 min., 60–1380 m



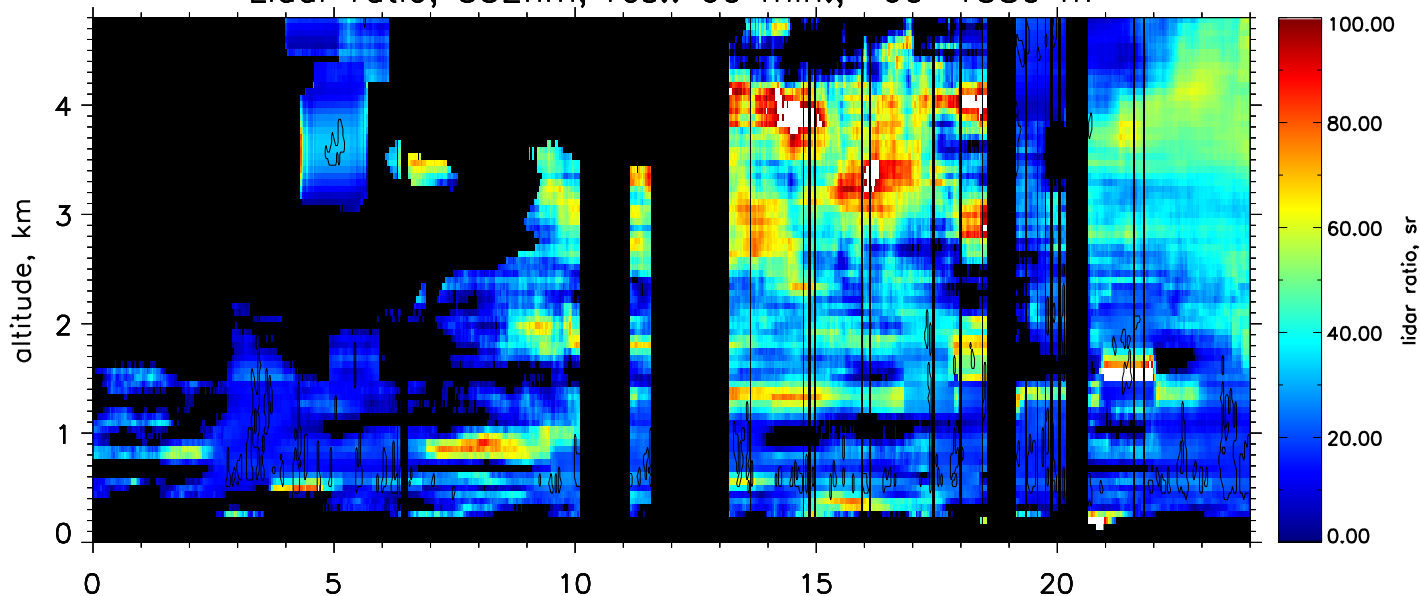
Particle backscatter, 355nm, res.: 60 min., 60–540 m



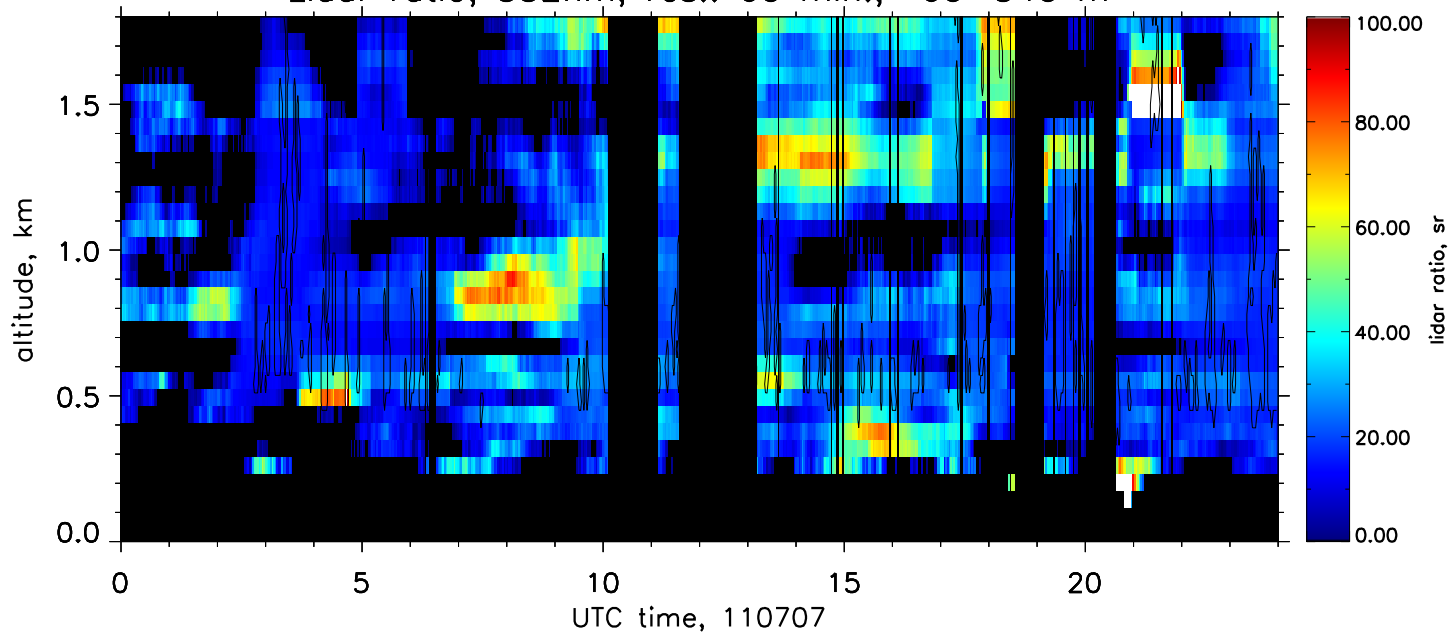
Lidar ratio, 532nm, res.: 60 min., 180–3300 m



Lidar ratio, 532nm, res.: 60 min., 60–1380 m

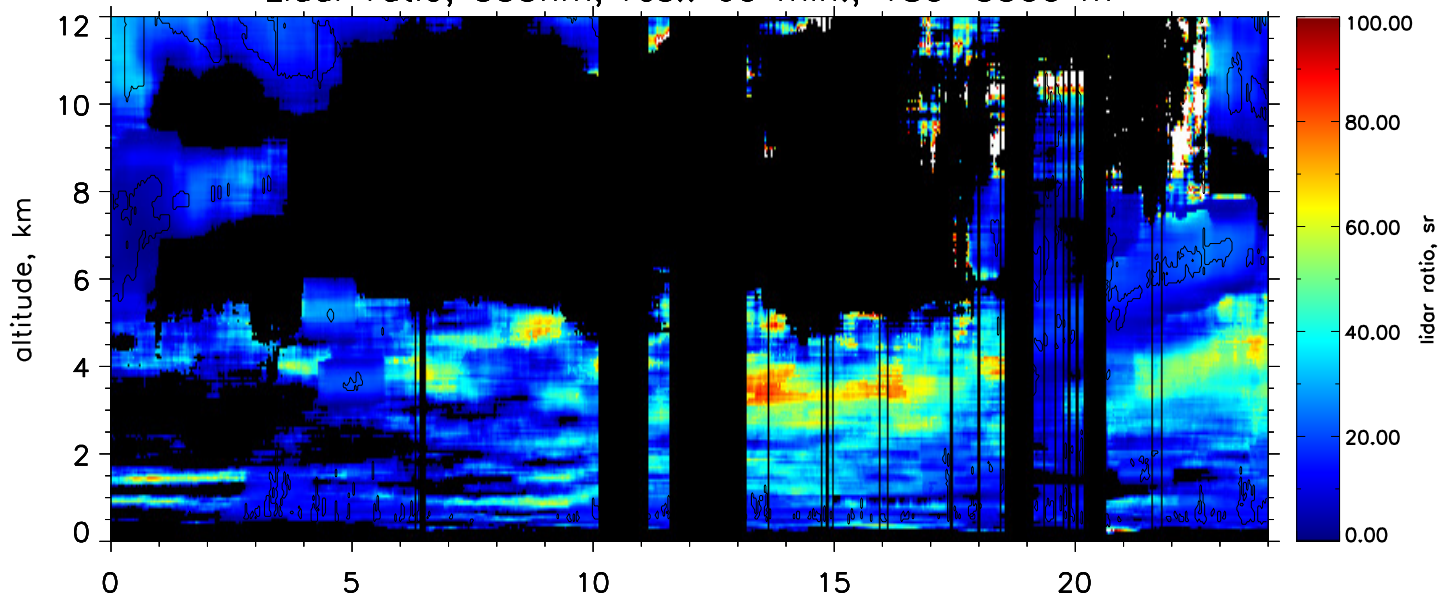


Lidar ratio, 532nm, res.: 60 min., 60–540 m

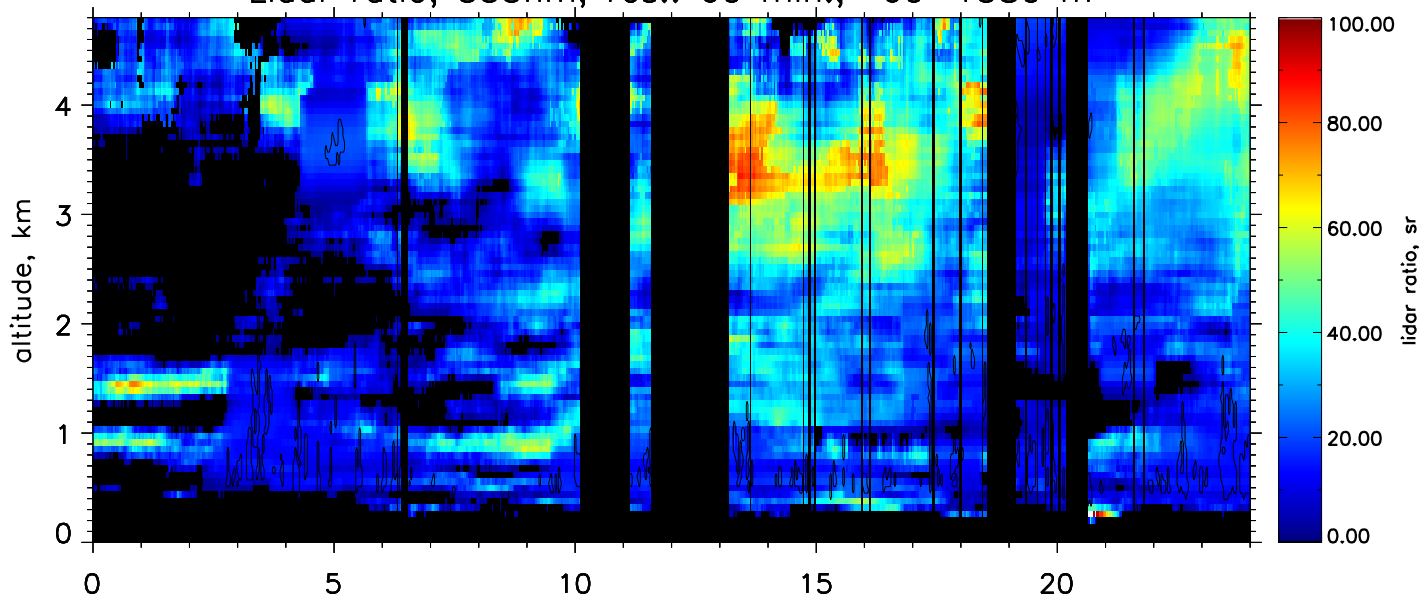




Lidar ratio, 355nm, res.: 60 min., 180–3300 m



Lidar ratio, 355nm, res.: 60 min., 60–1380 m



Lidar ratio, 355nm, res.: 60 min., 60–540 m

