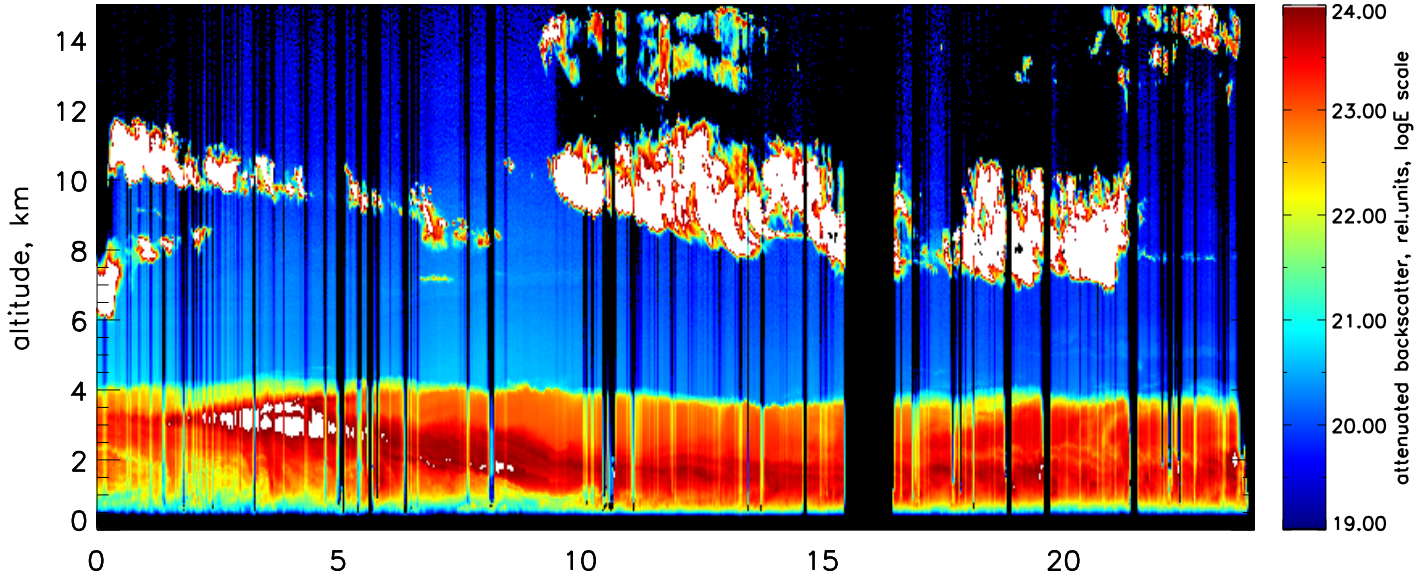
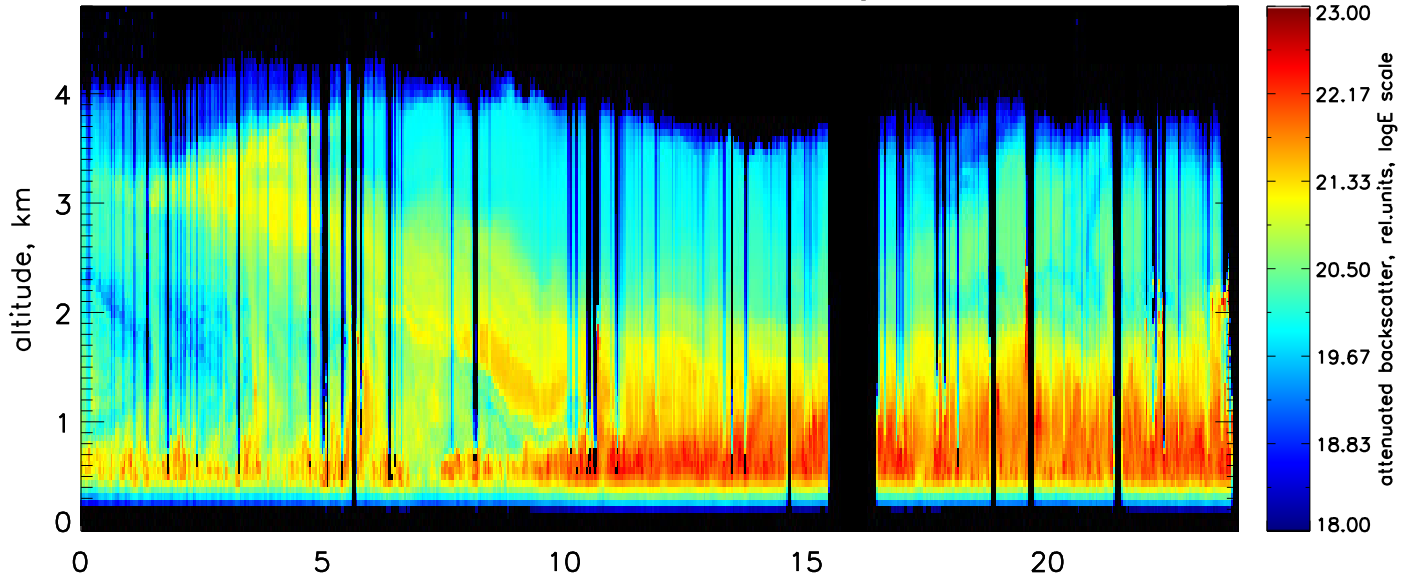


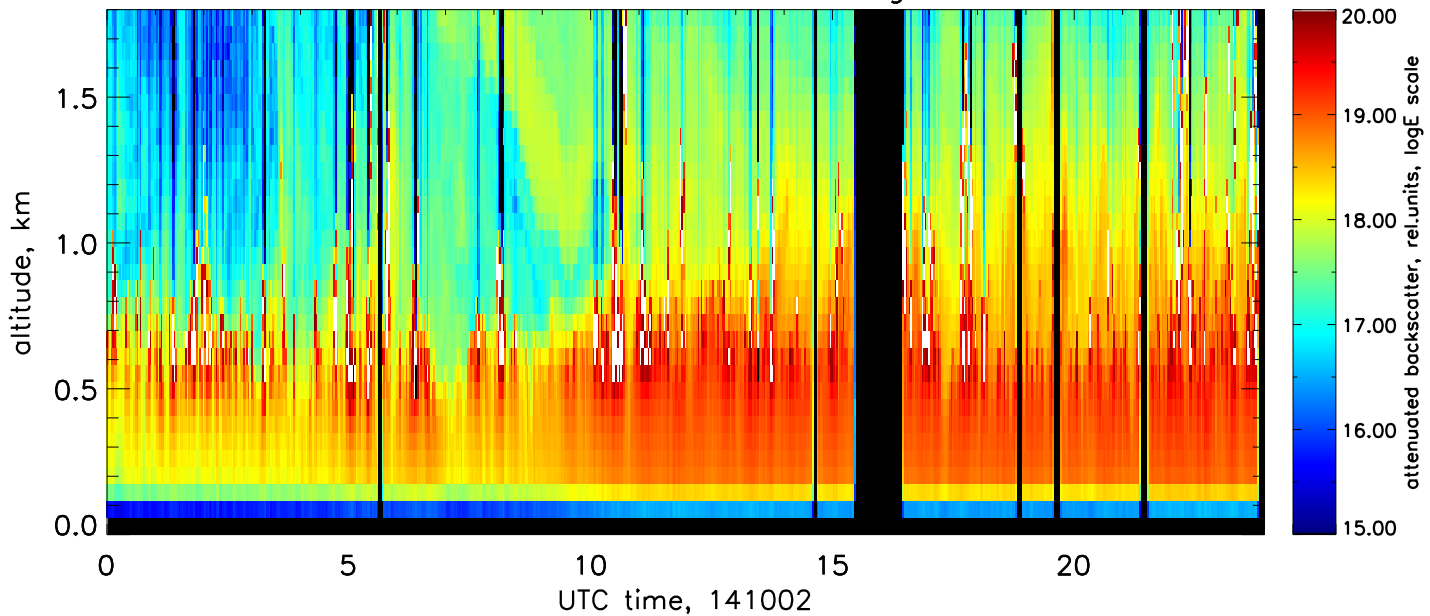
attenuated backscatter, 1064nm, far range, res.: 2min., 60m



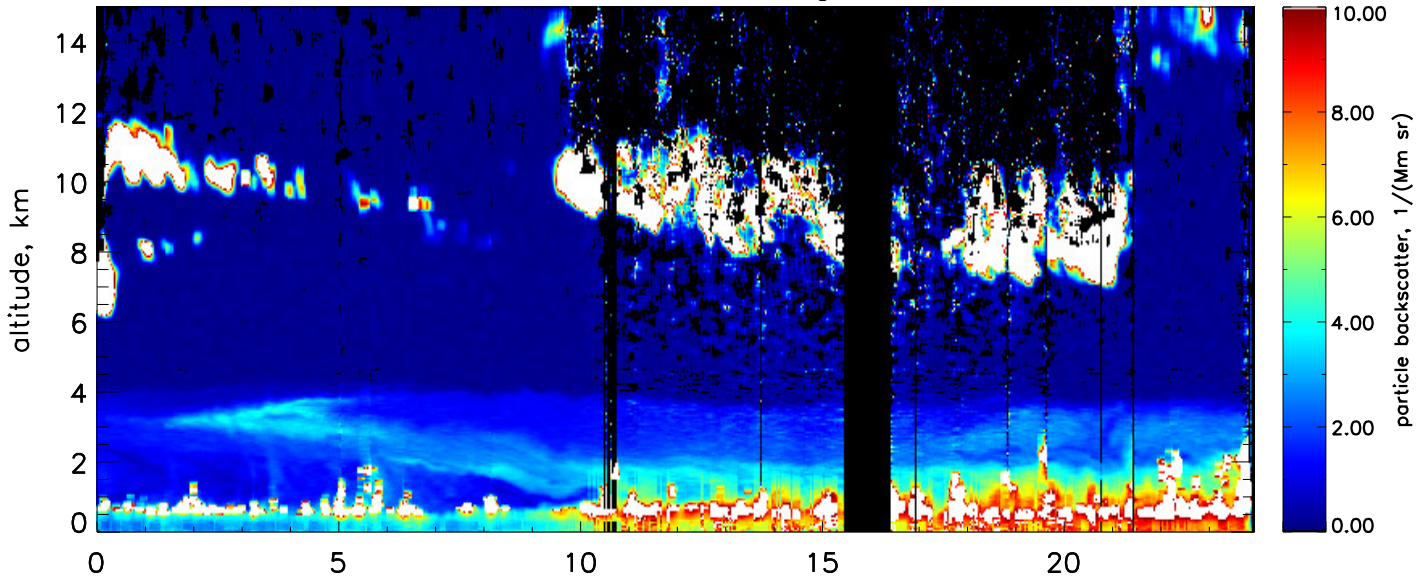
attenuated backscatter, 1064nm, near range, res.: 2min., 60m



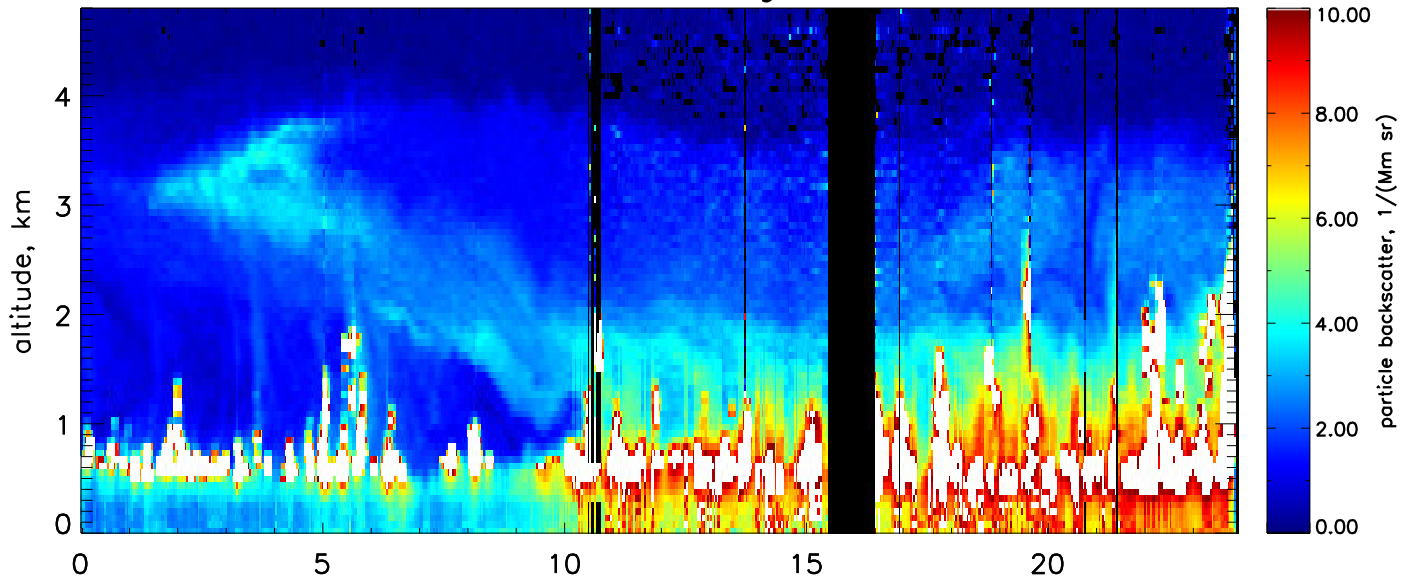
attenuated backscatter, 1064nm, close range, res.: 2min., 60m



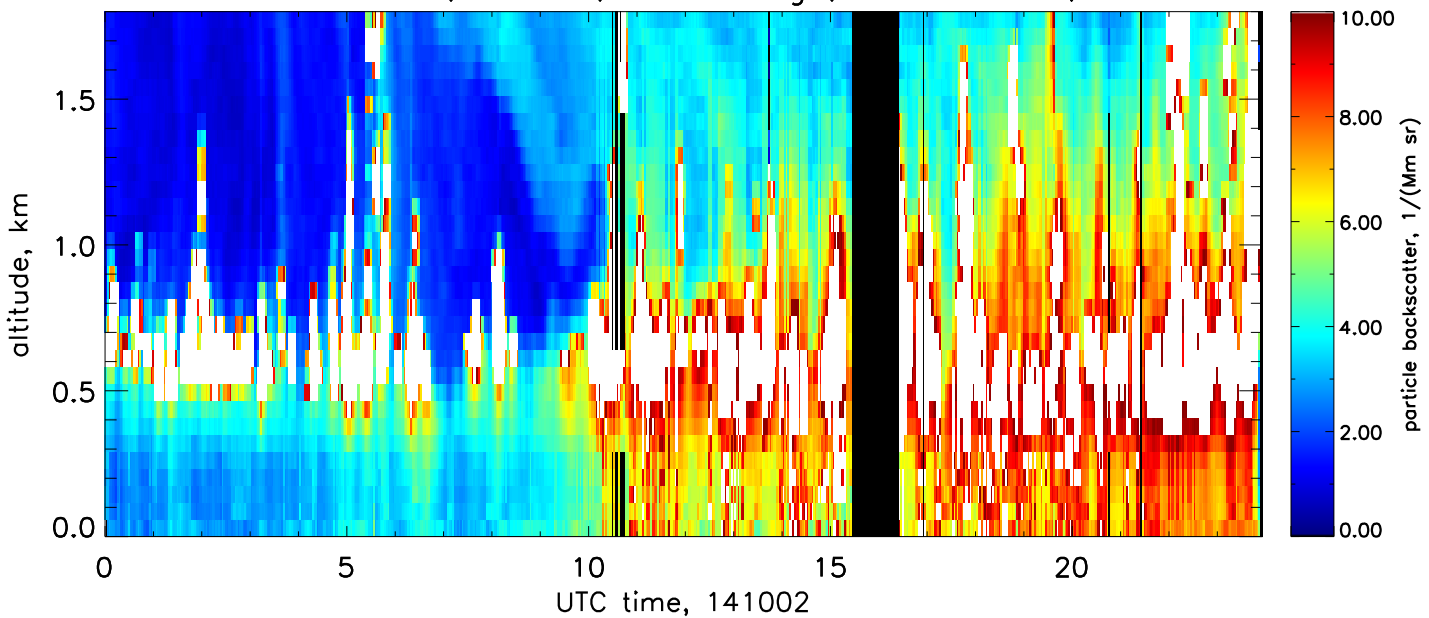
Particle backscatter, 532nm, complete range, res.: 10min., 60–600m



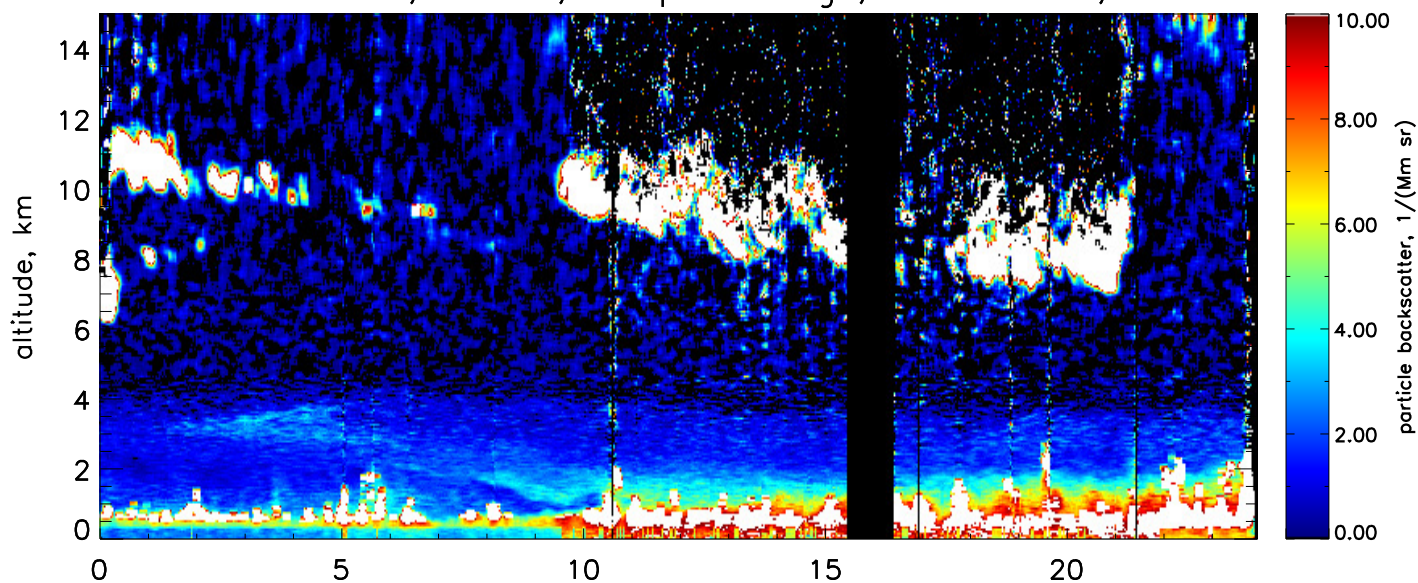
Particle backscatter, 532nm, near range, res.: 10min., 60–600m



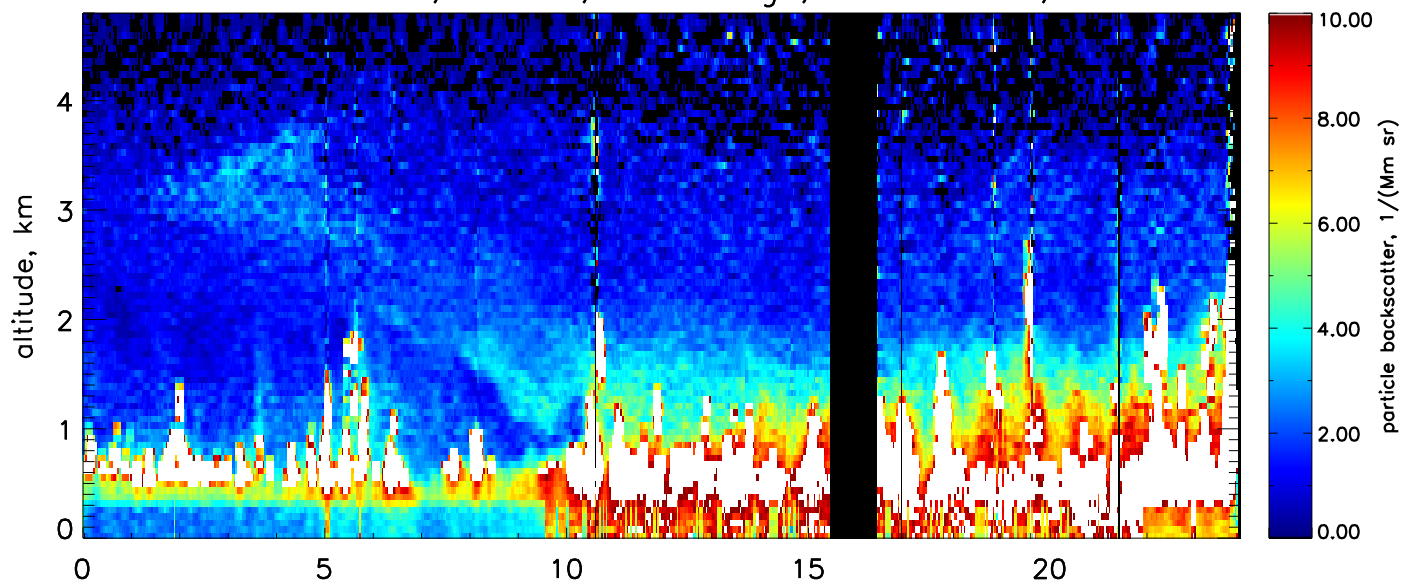
Particle backscatter, 532nm, close range, res.: 10min., 60–600m



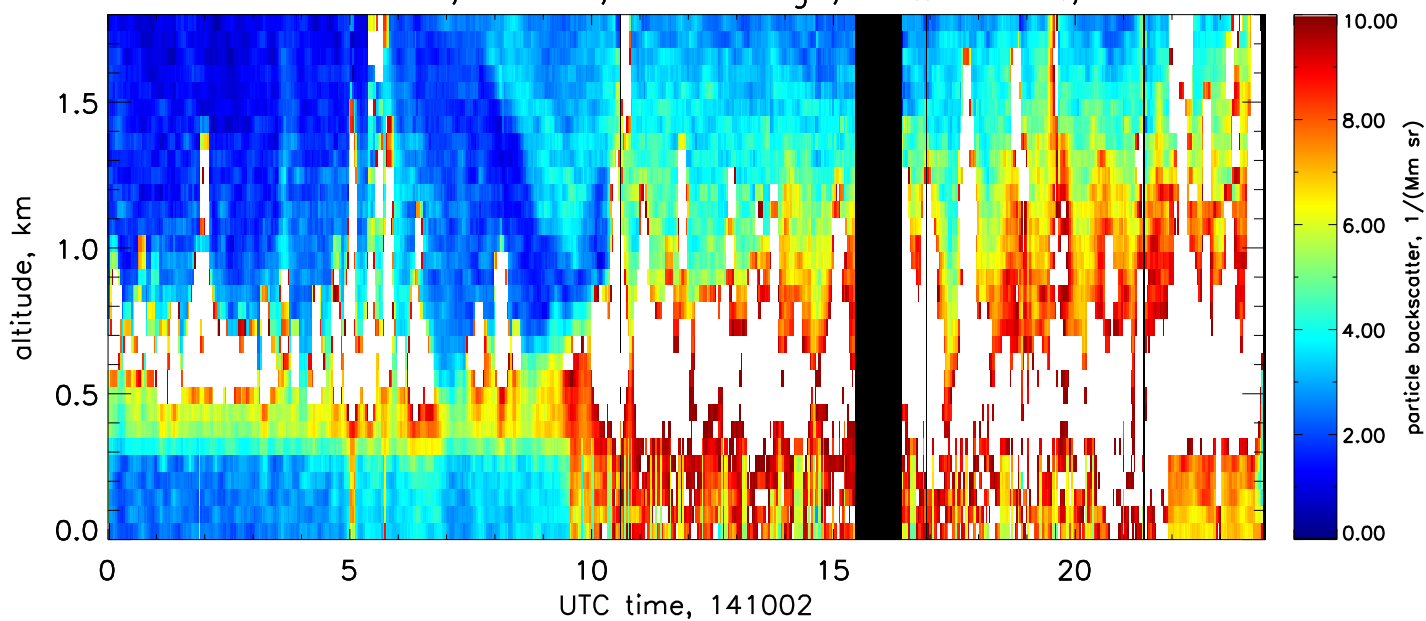
Particle backscatter, 355nm, complete range, res.: 10min., 60–600m



Particle backscatter, 355nm, near range, res.: 10min., 60–600m

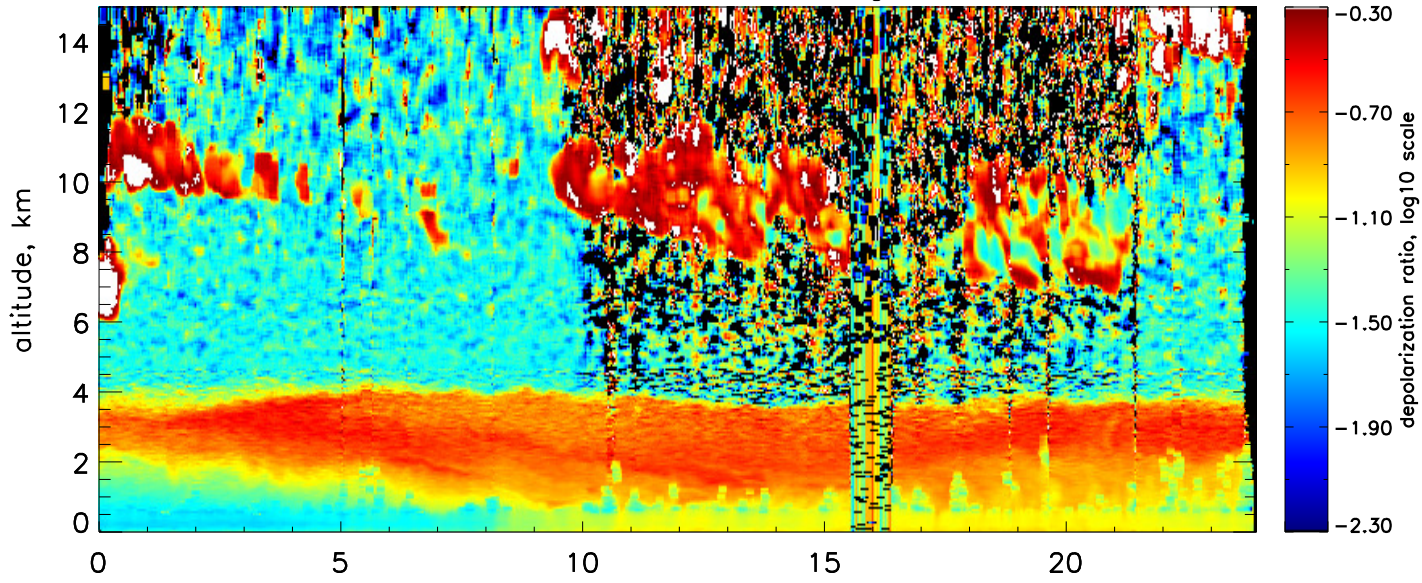


Particle backscatter, 355nm, close range, res.: 10min., 60–600m

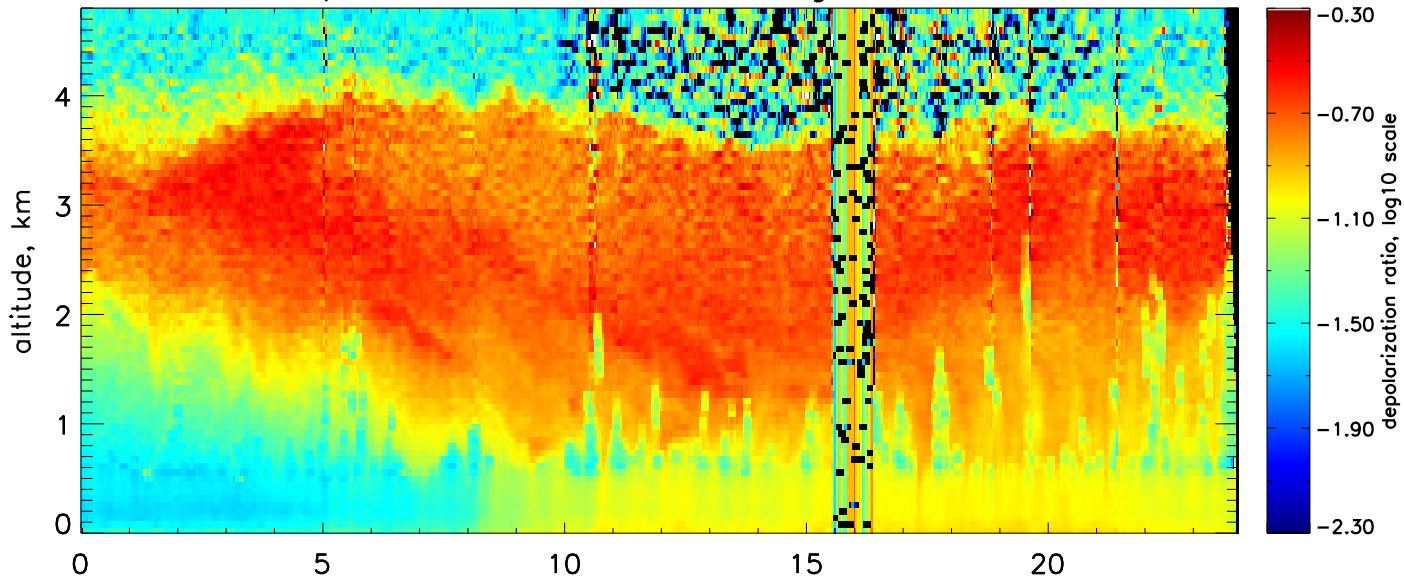




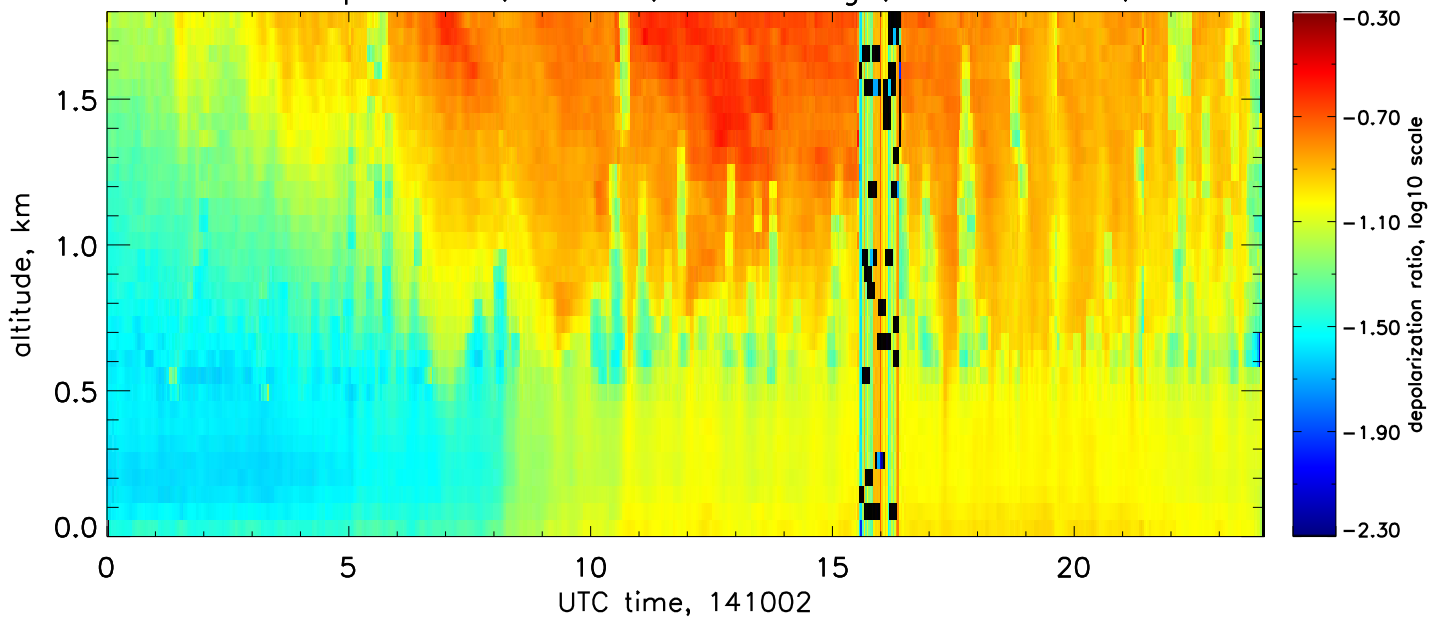
Volume linear depol. ratio, 532nm, complete range, res.: 10min., 60–600m



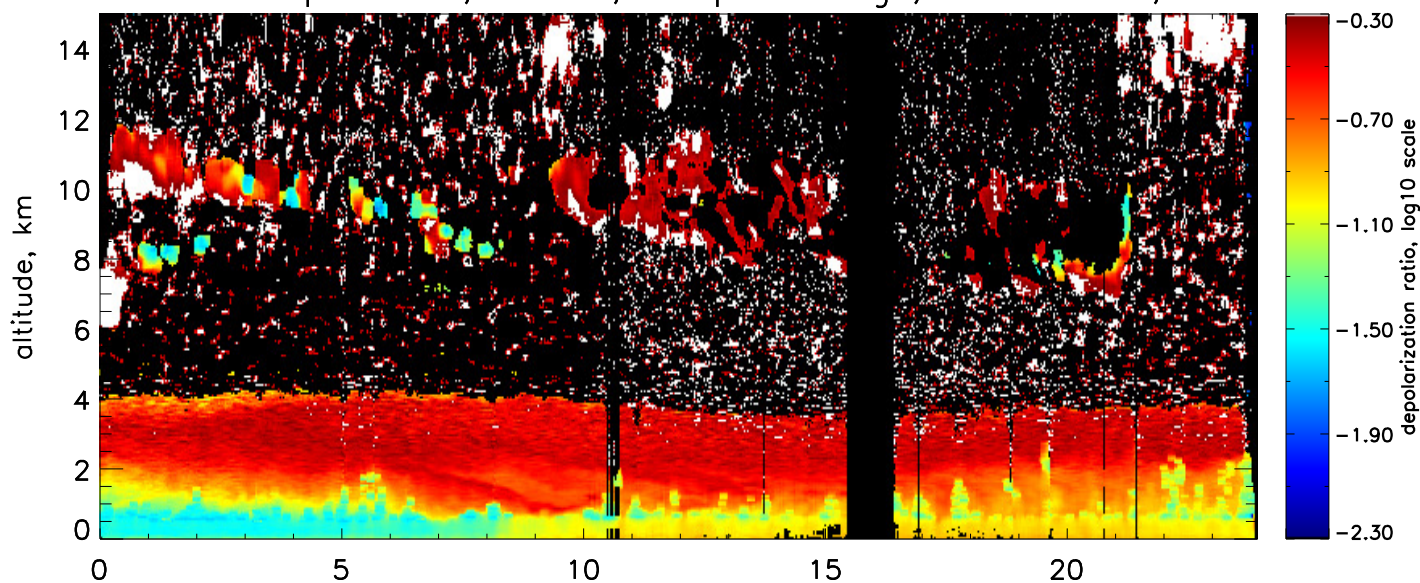
Volume linear depol. ratio, 532nm, near range, res.: 10min., 60–600m



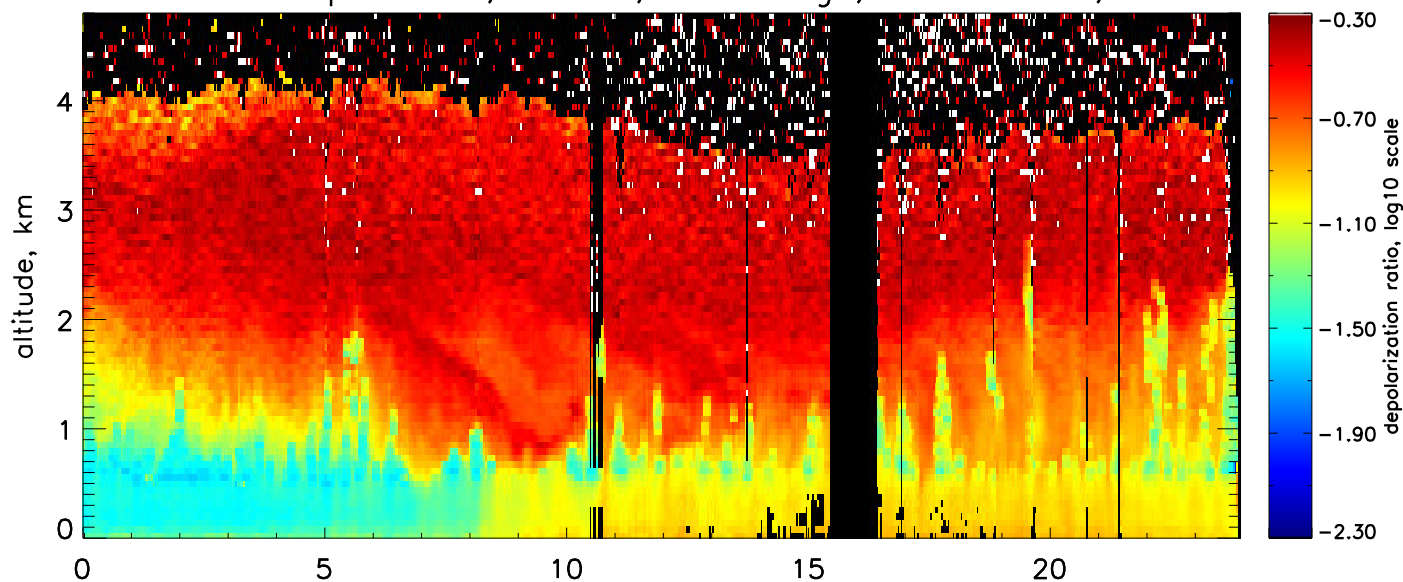
Volume linear depol. ratio, 532nm, close range, res.: 10min., 60–600m



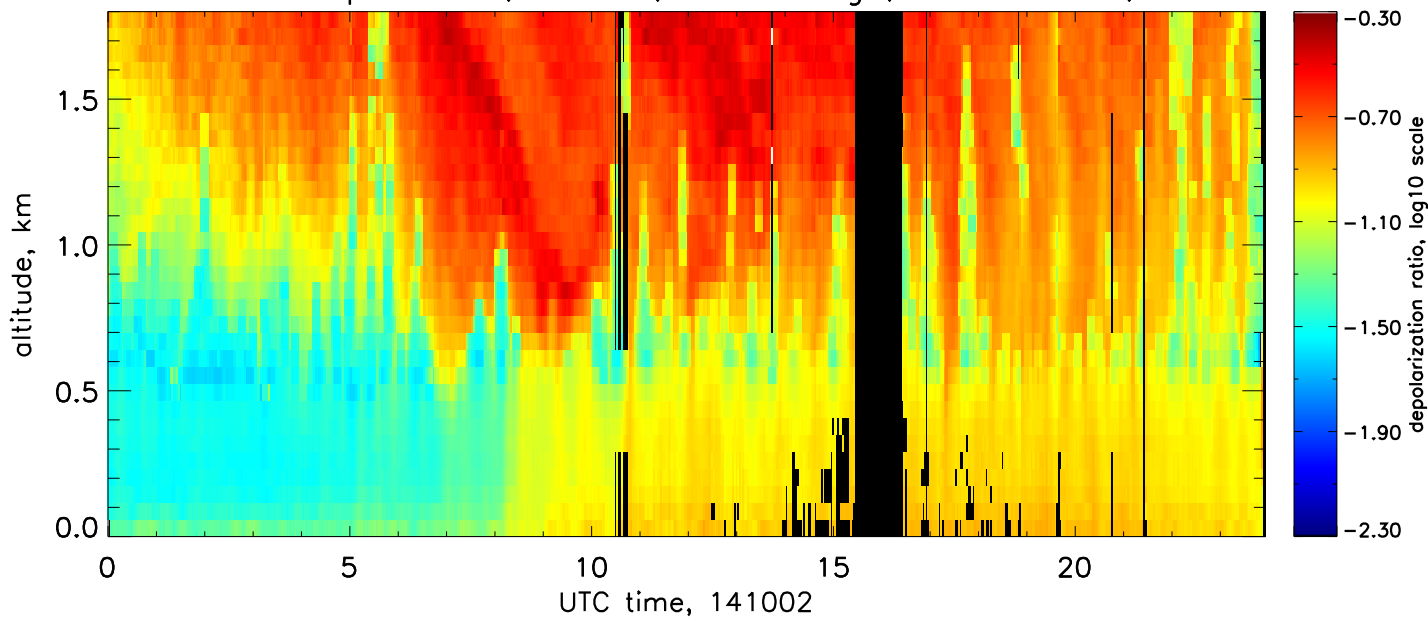
Particle linear depol. ratio, 532nm, complete range, res.: 10min., 60–600m



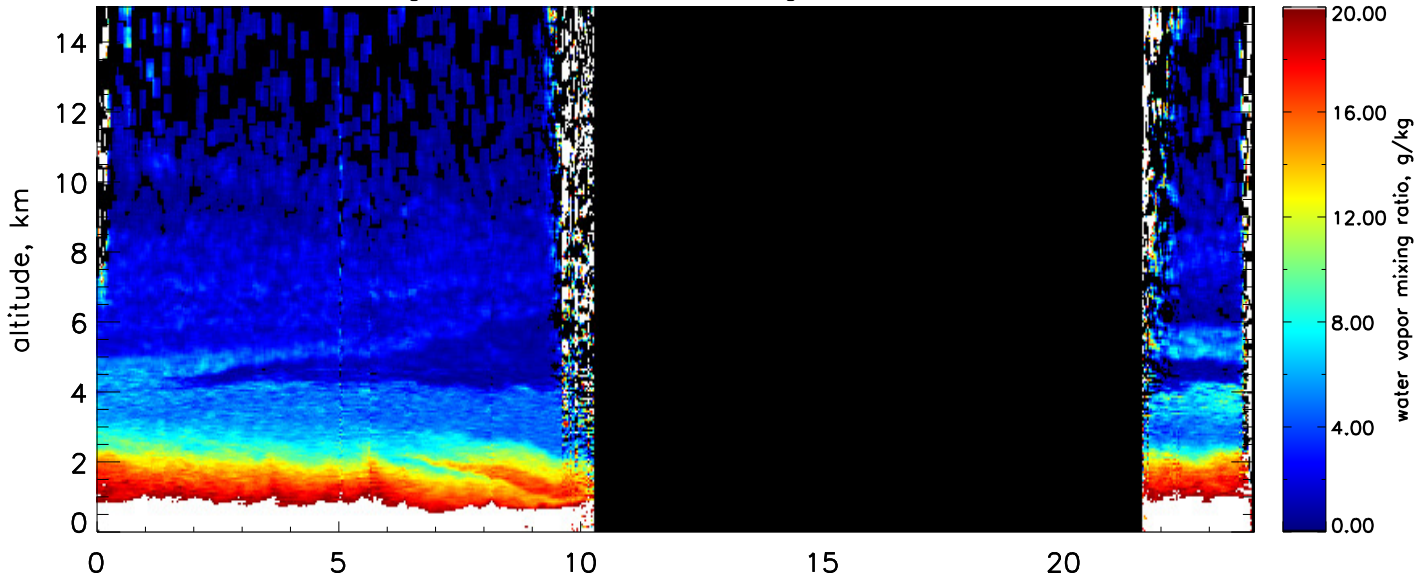
Particle linear depol. ratio, 532nm, near range, res.: 10min., 60–600m



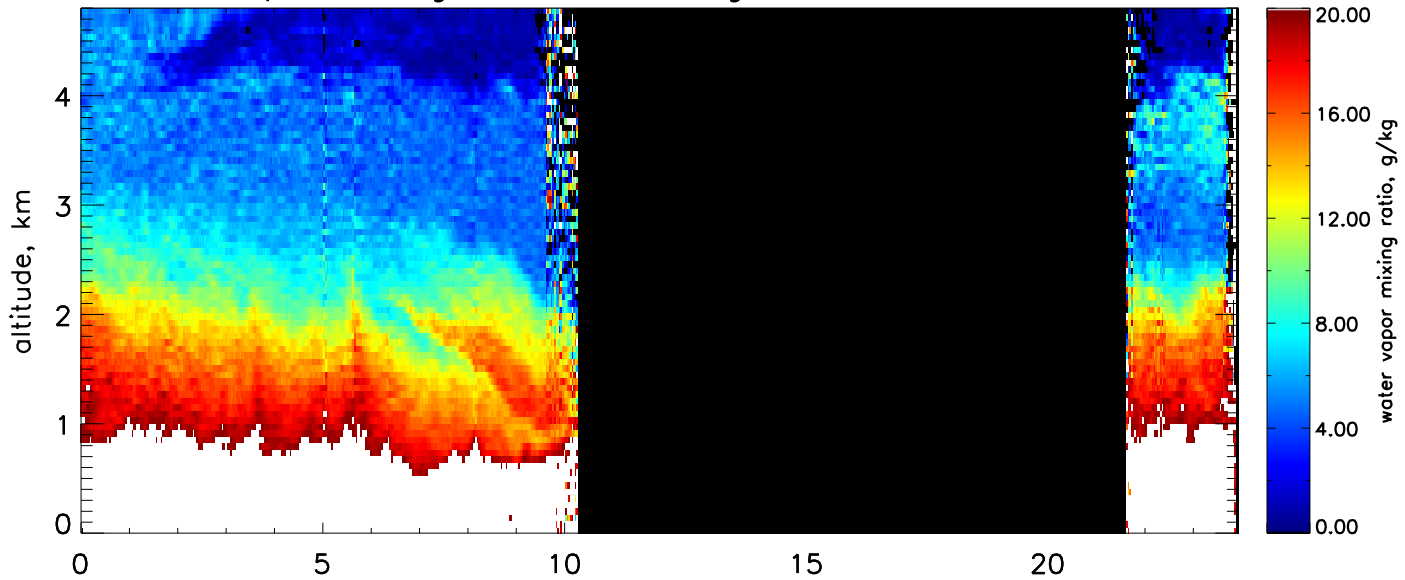
Particle linear depol. ratio, 532nm, close range, res.: 10min., 60–600m



Water vapor mixing ratio, complete range, res.: 10min., 60–600m



Water vapor mixing ratio, near range, res.: 10min., 60–600m



Water vapor mixing ratio, close range, res.: 10min., 60–600m

