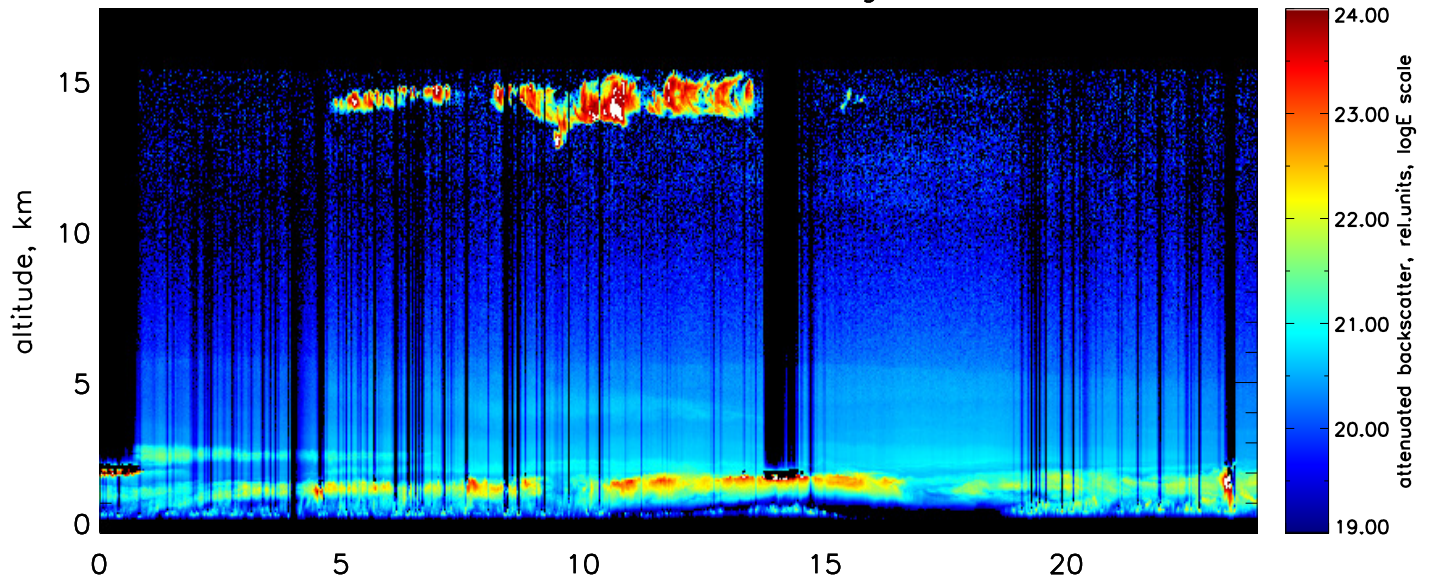
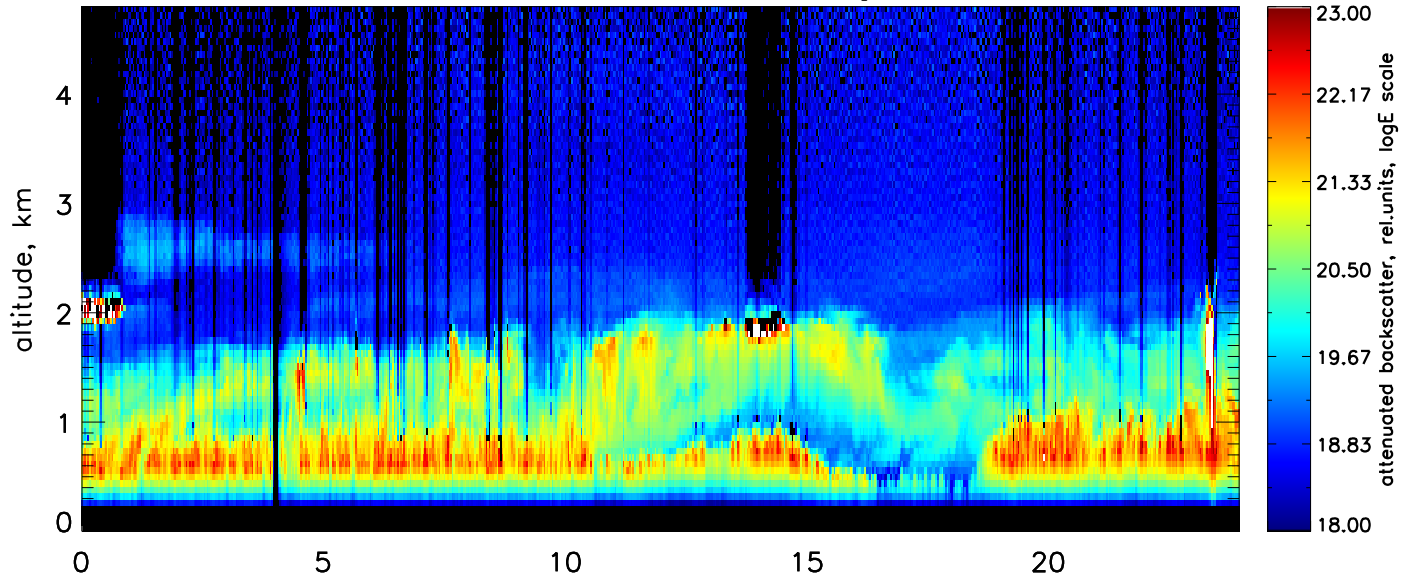


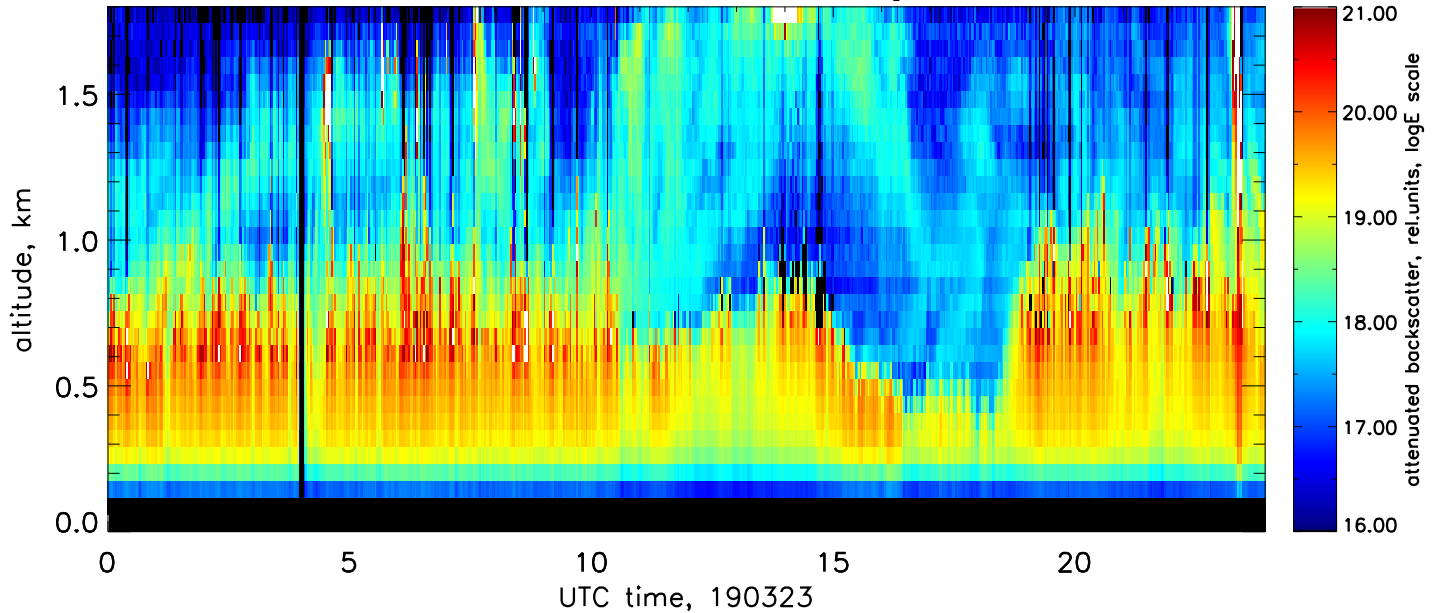
attenuated backscatter, 1064nm, far range, res.: 2min., 60m



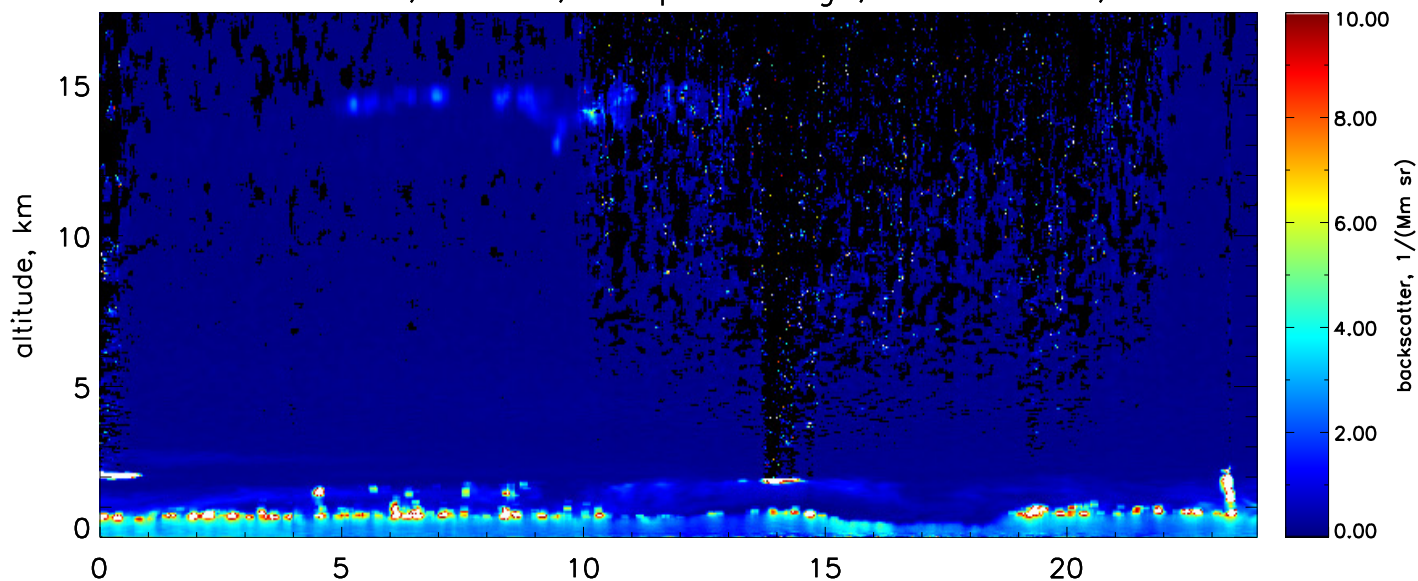
attenuated backscatter, 1064nm, near range, res.: 2min., 60m



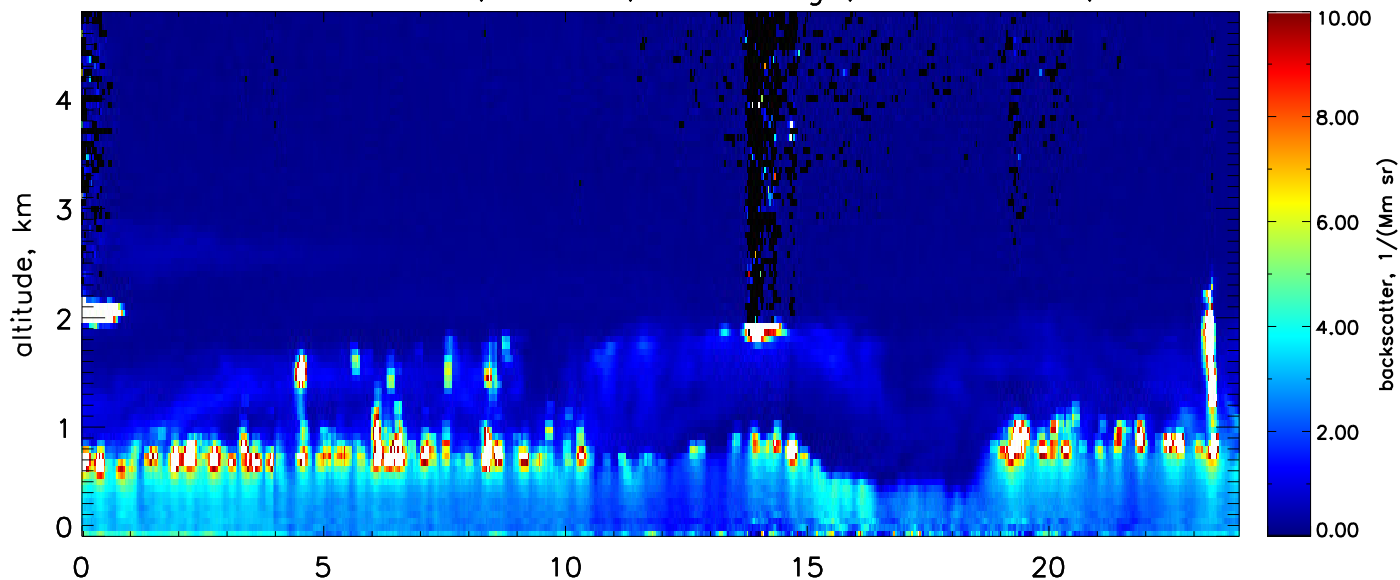
attenuated backscatter, 1064nm, close range, res.: 2min., 60m



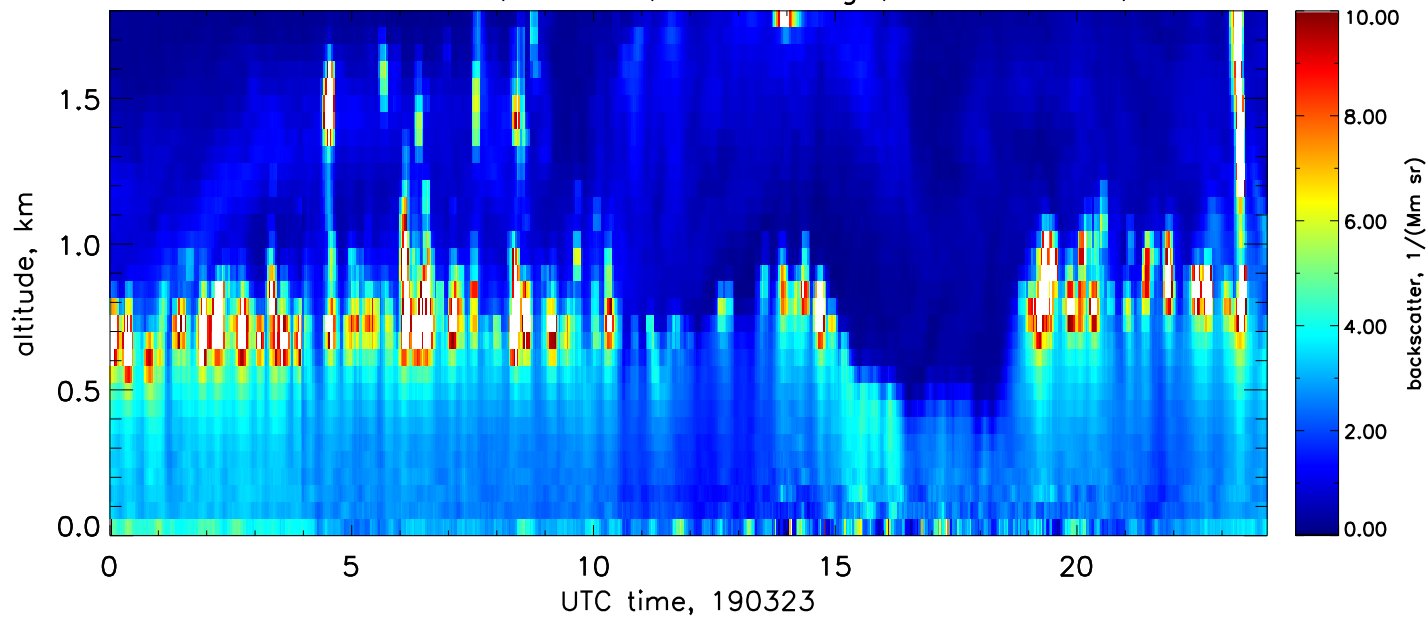
Particle backscatter, 532nm, complete range, res.: 10min., 60–600m



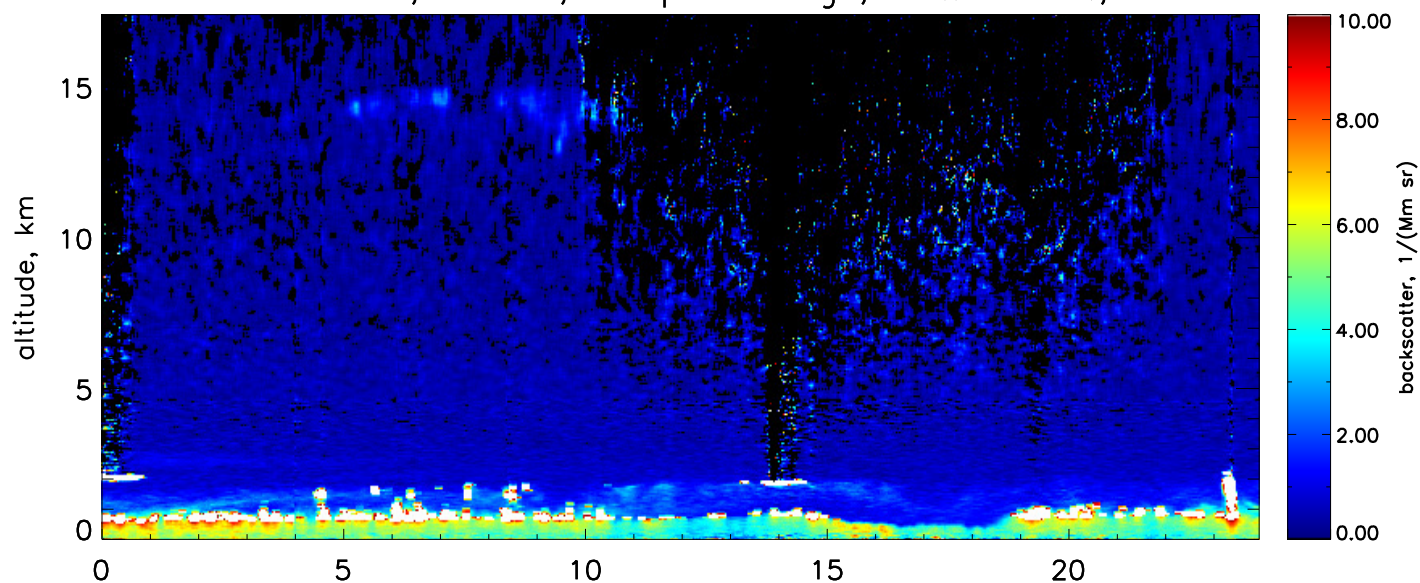
Particle backscatter, 532nm, near range, res.: 10min., 60m



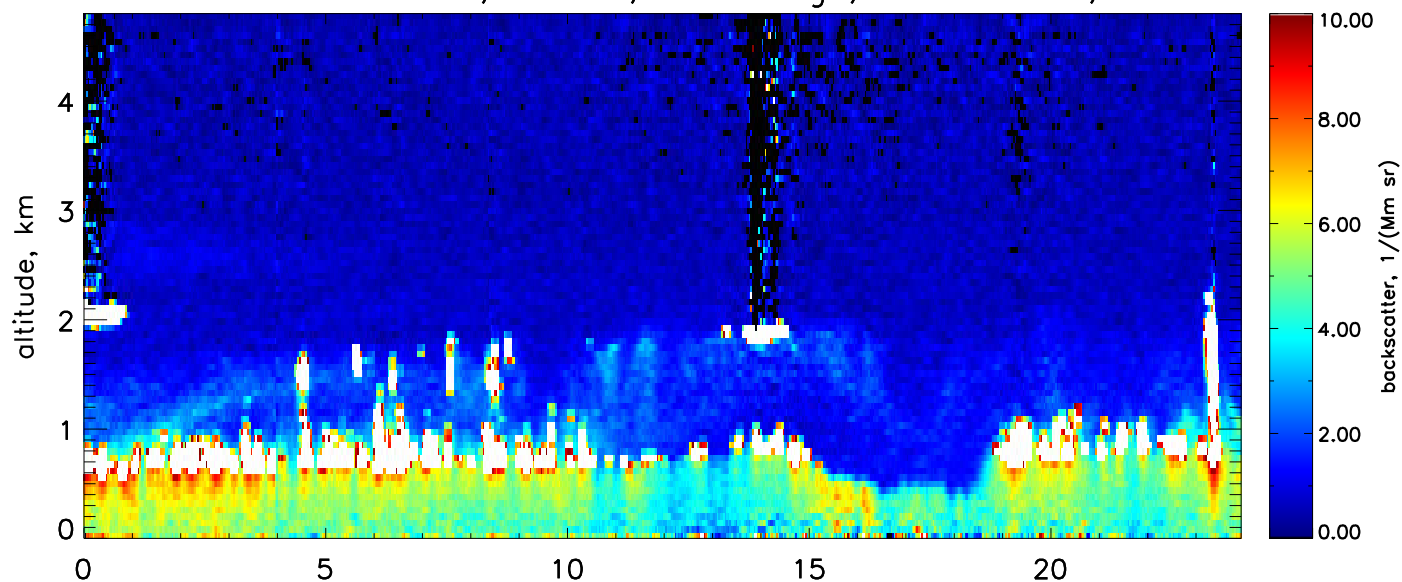
Particle backscatter, 532nm, close range, res.: 10min., 60m



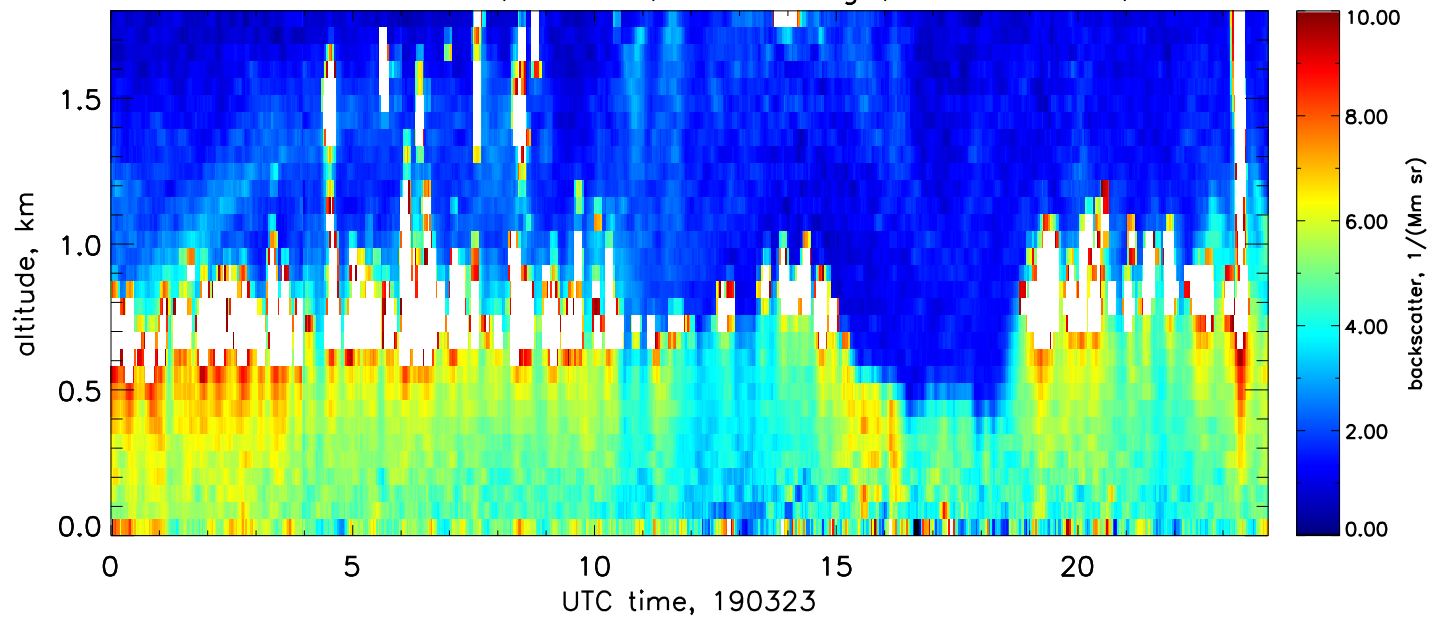
Particle backscatter, 355nm, complete range, res.: 10min., 60–600m



Particle backscatter, 355nm, near range, res.: 10min., 60m

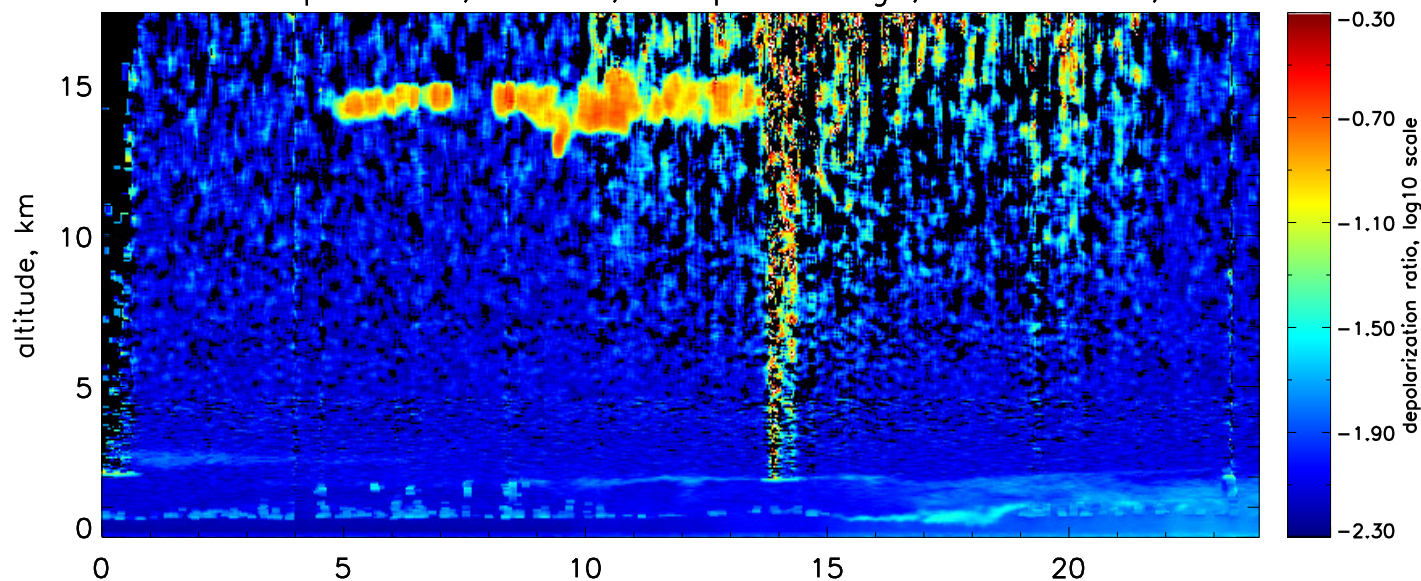


Particle backscatter, 355nm, close range, res.: 10min., 60m

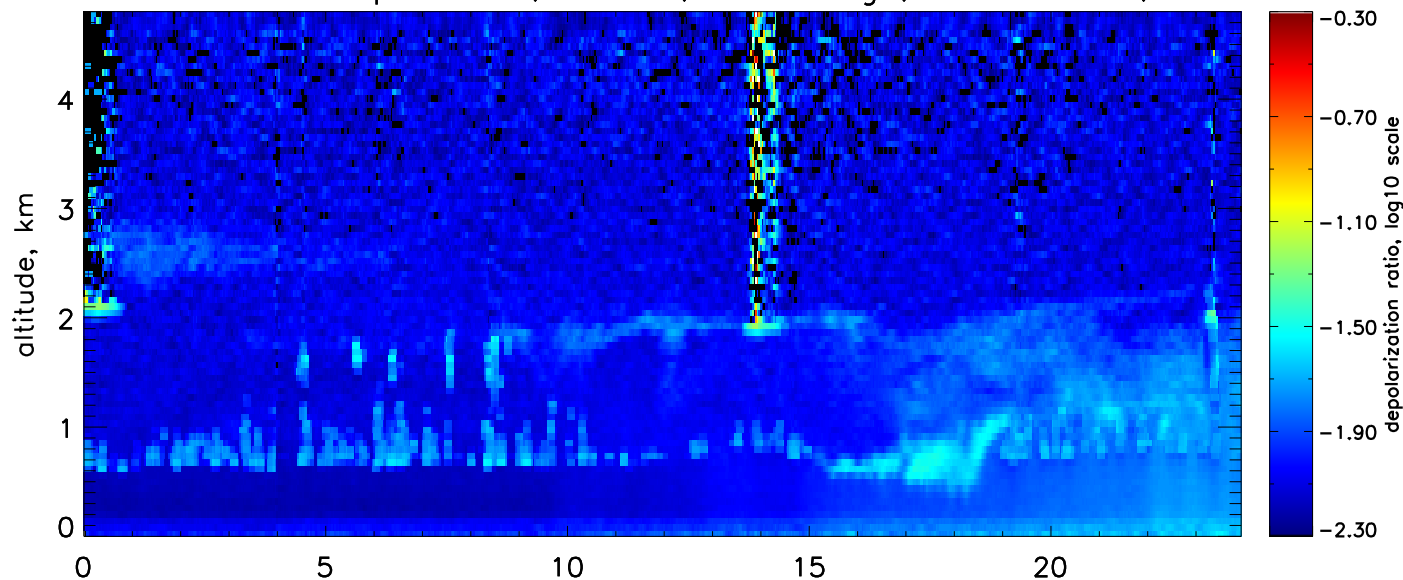




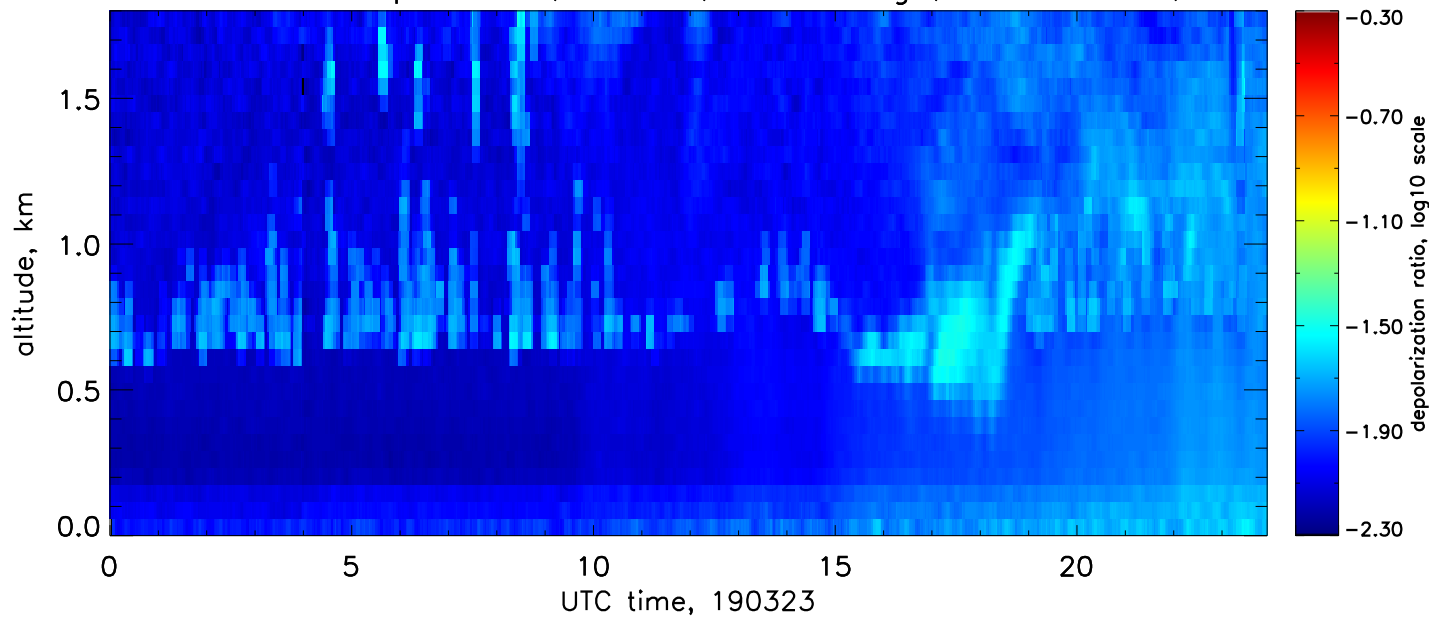
Volume linear depol. ratio, 532nm, complete range, res.: 10min., 60–600m



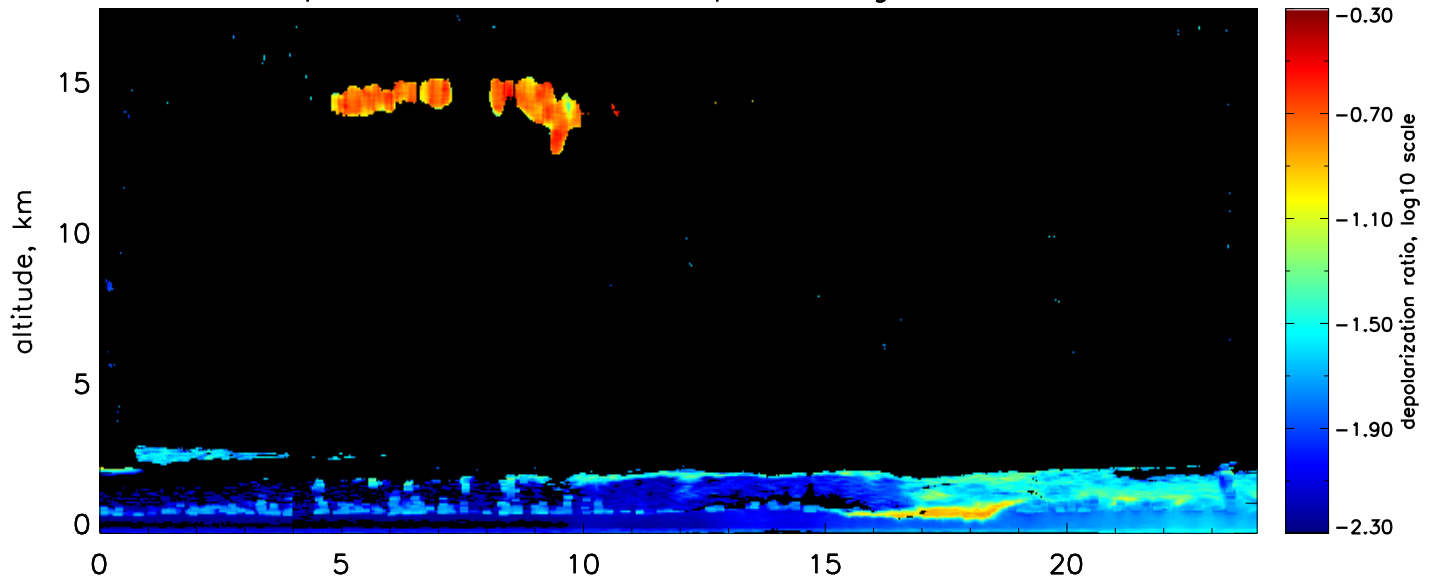
Volume linear depol. ratio, 532nm, near range, res.: 10min., 60m



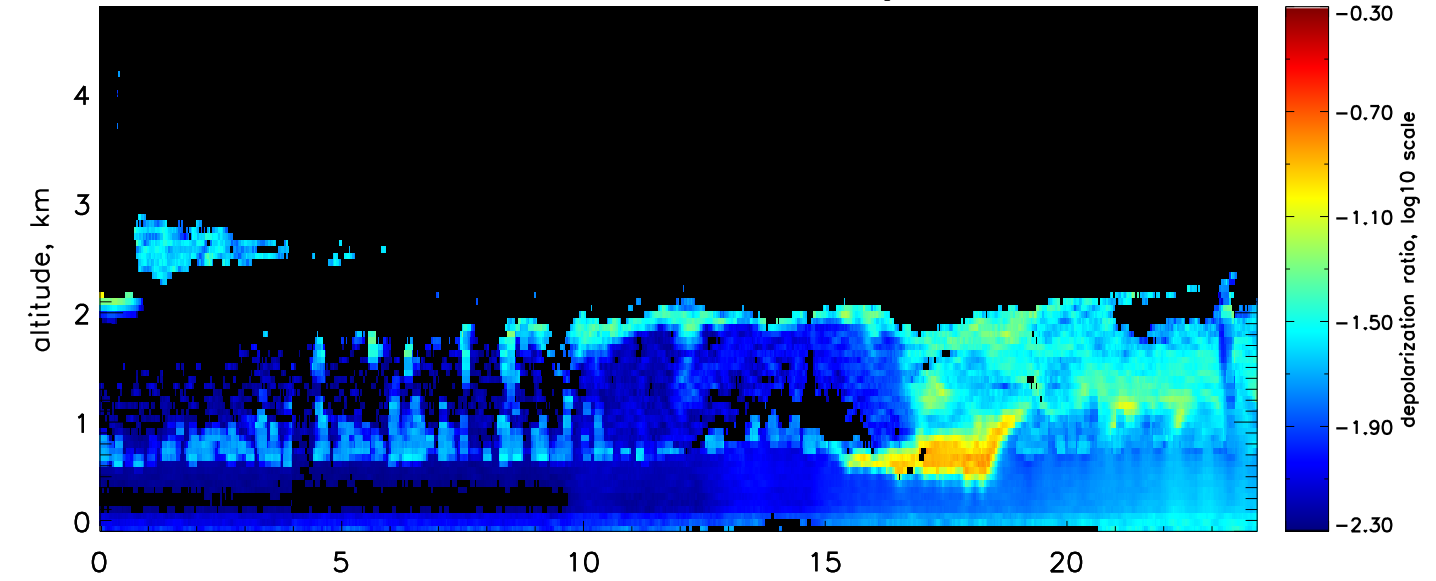
Volume linear depol. ratio, 532nm, close range, res.: 10min., 60m



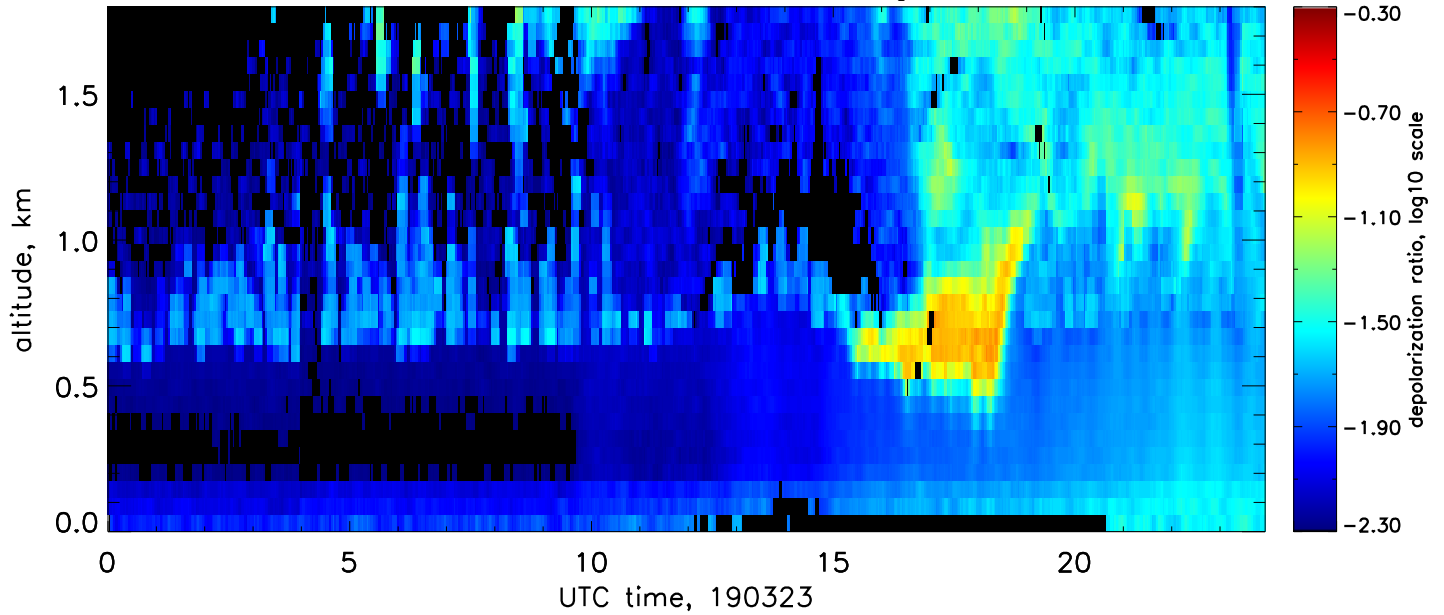
Particle linear depol. ratio, 532nm, complete range, res.: 10min., 60–600m



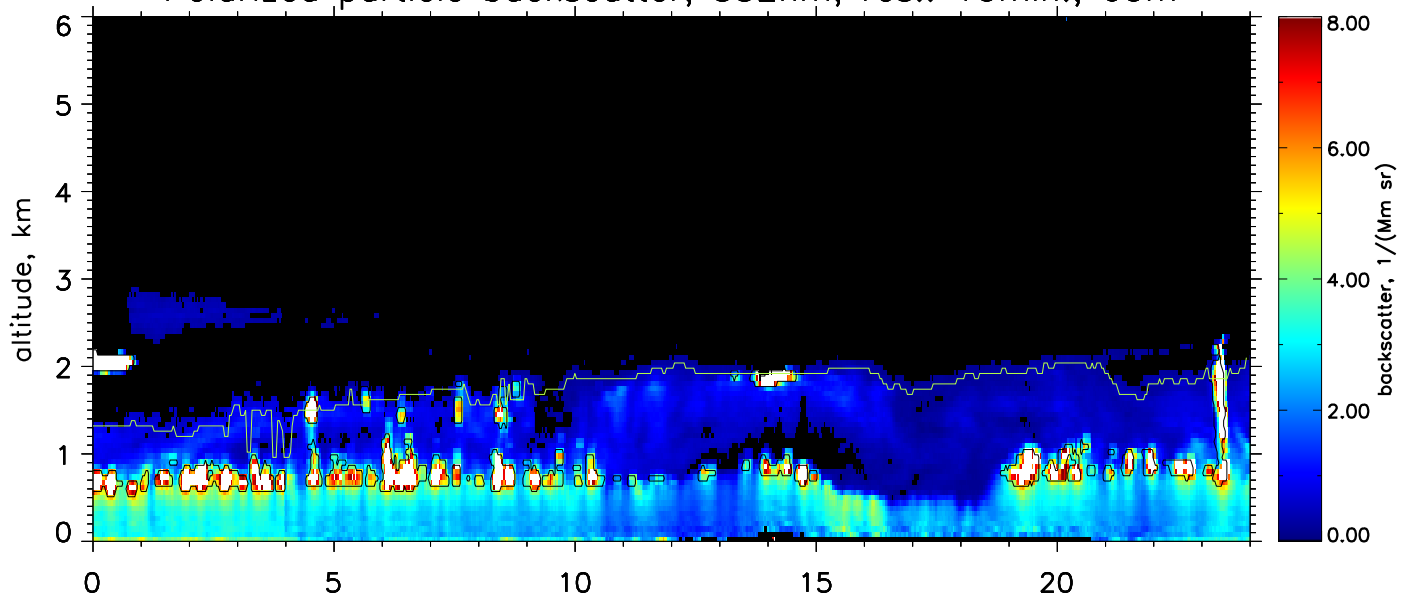
Particle linear depol. ratio, 532nm, near range, res.: 10min., 60m



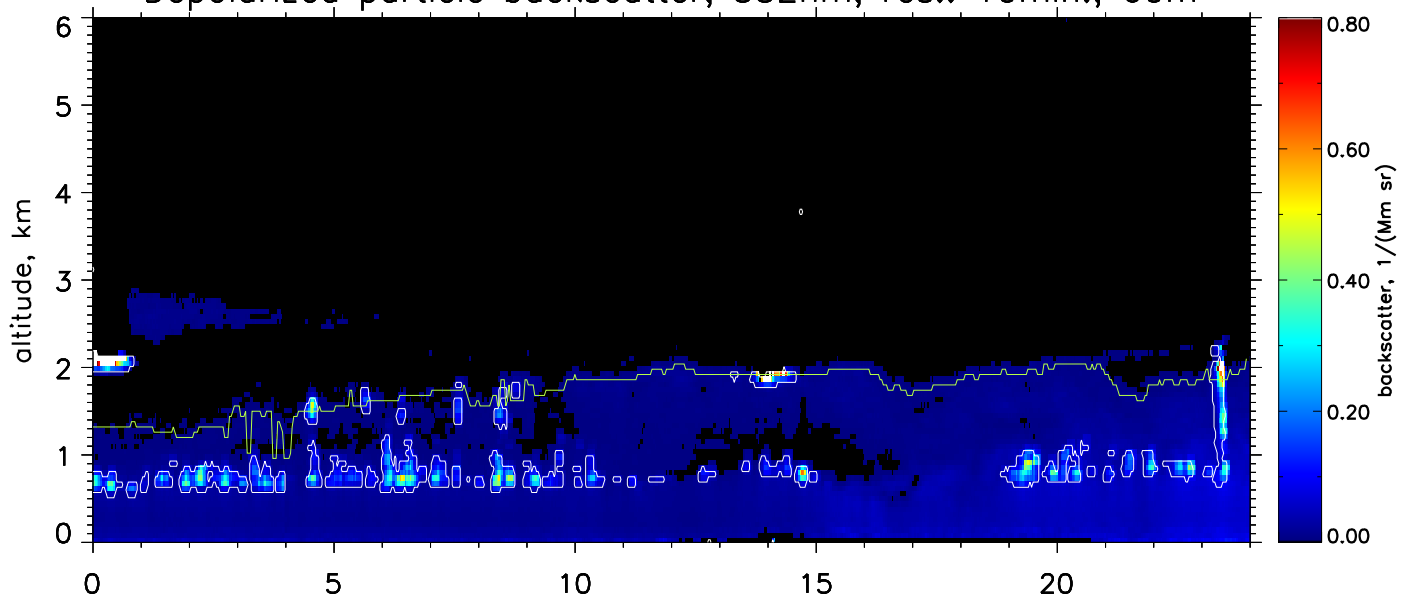
Particle linear depol. ratio, 532nm, close range, res.: 10min., 60m



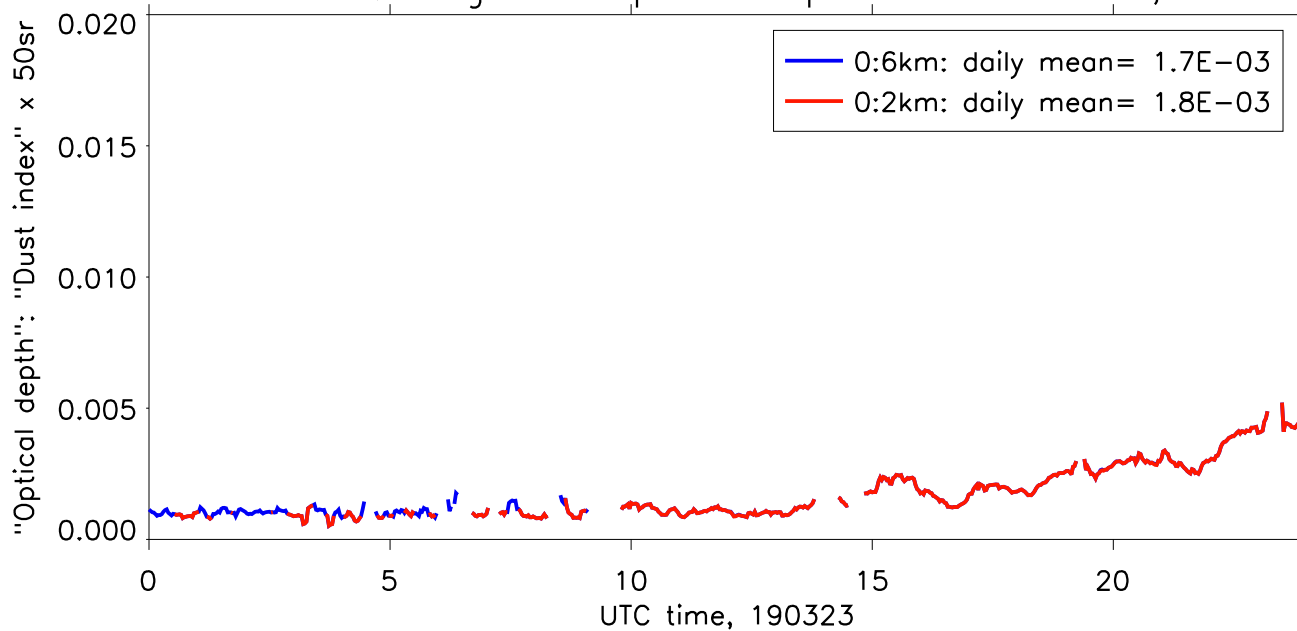
Polarized particle backscatter, 532nm, res.: 10min., 60m



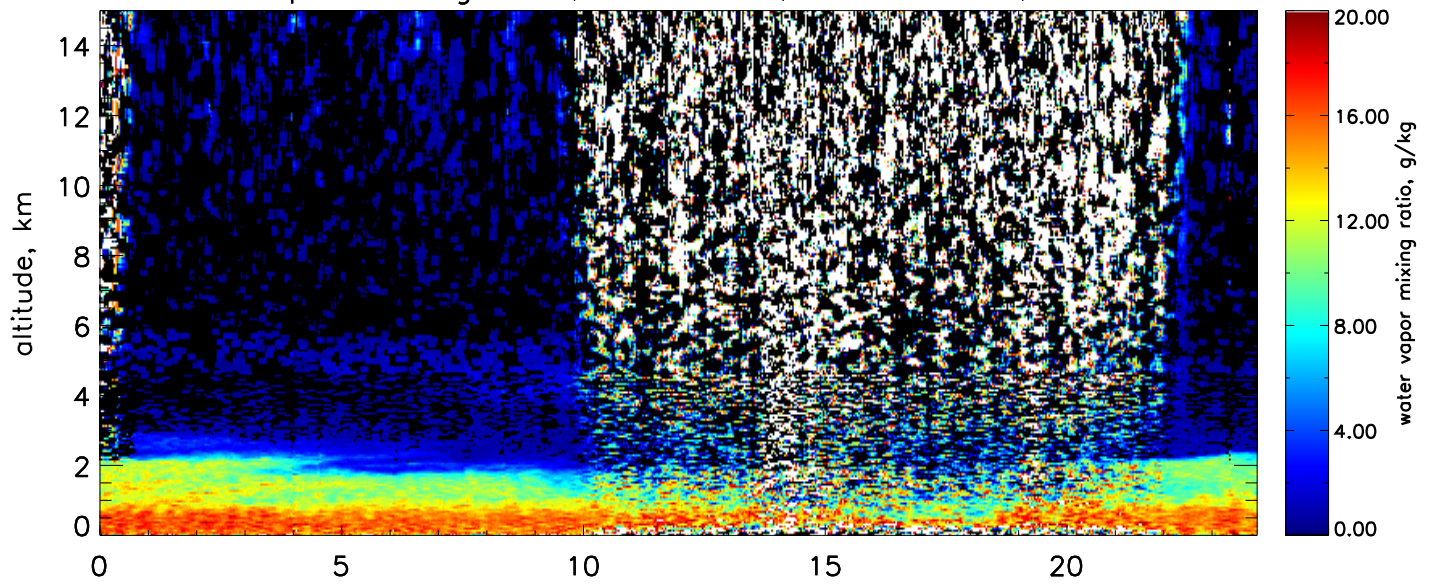
Depolarized particle backscatter, 532nm, res.: 10min., 60m



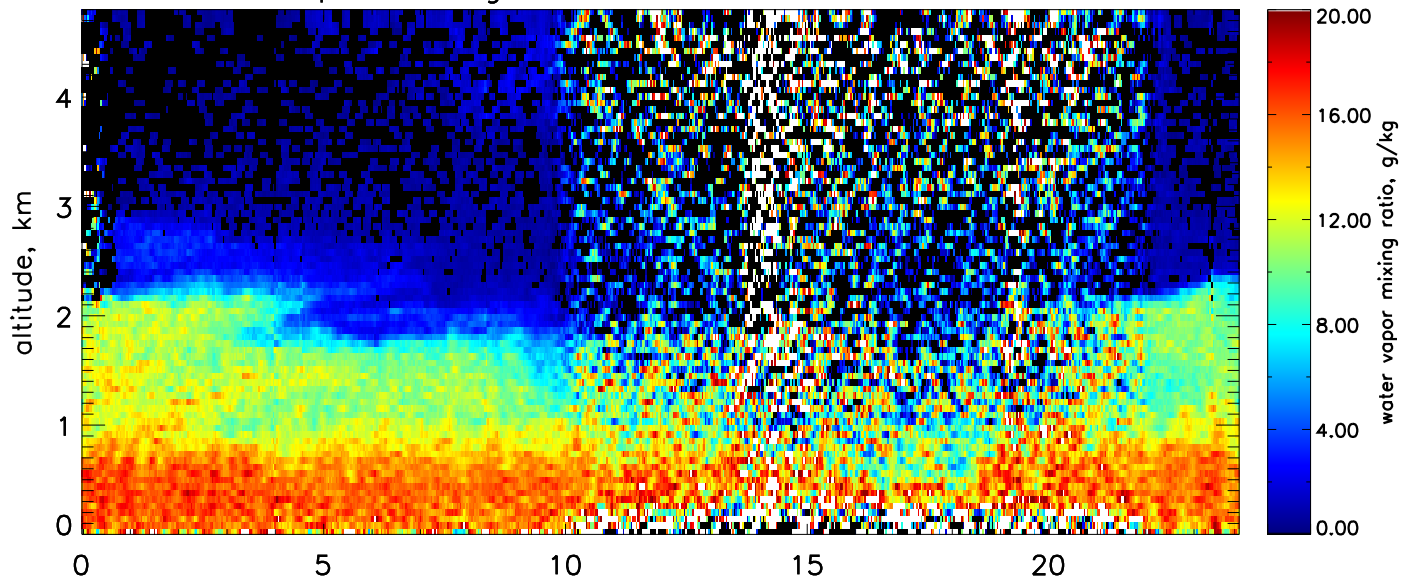
"Dust index": integrated depolarized particle backscatter, 532nm



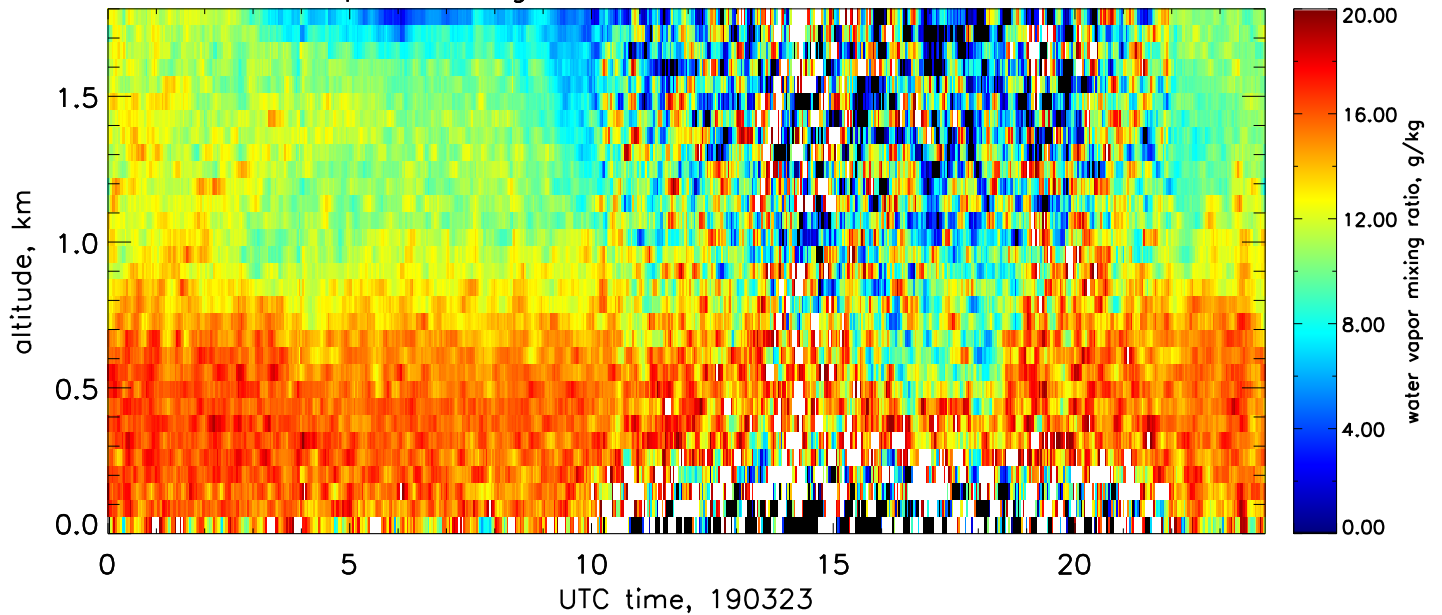
Water vapor mixing ratio, FAR+NEAR, res.: 10min., 60–600m



Water vapor mixing ratio, FAR+NEAR, res.: 10min., 60m

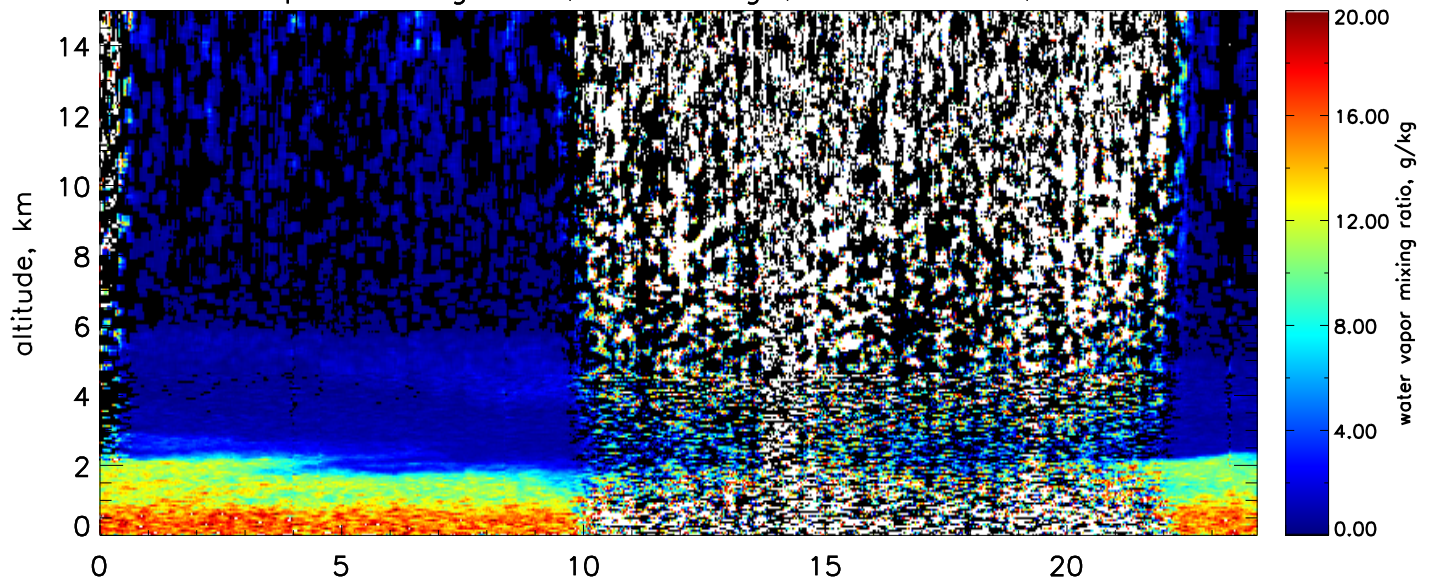


Water vapor mixing ratio, FAR+NEAR, res.: 10min., 60m

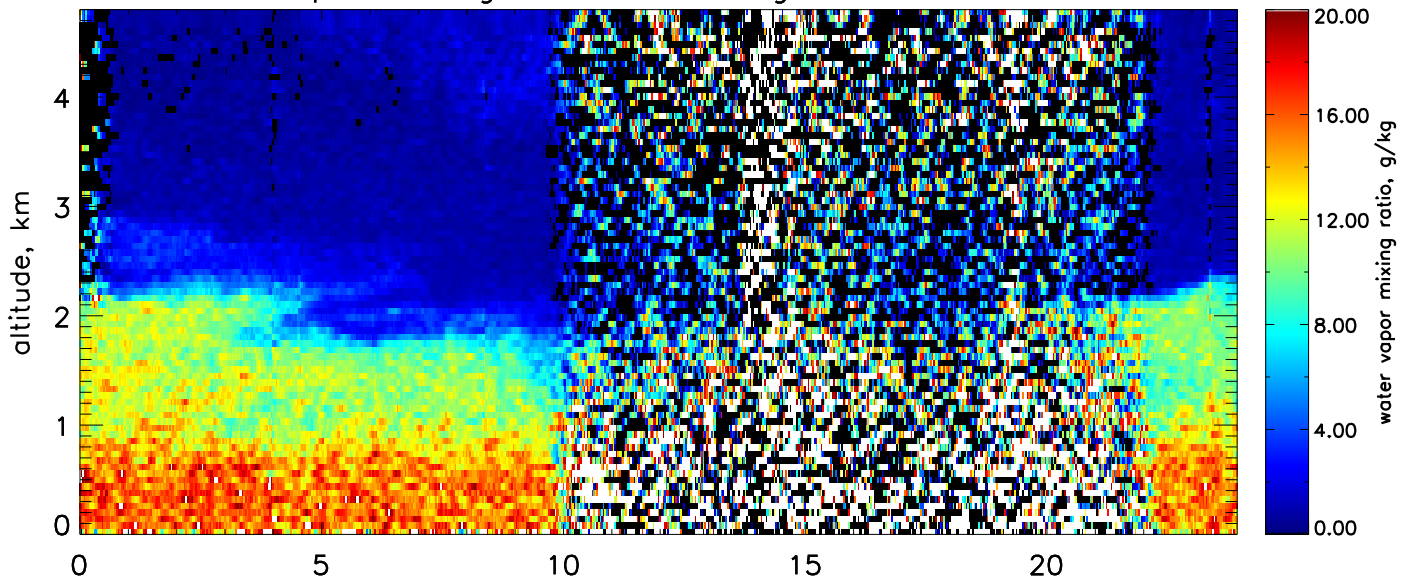




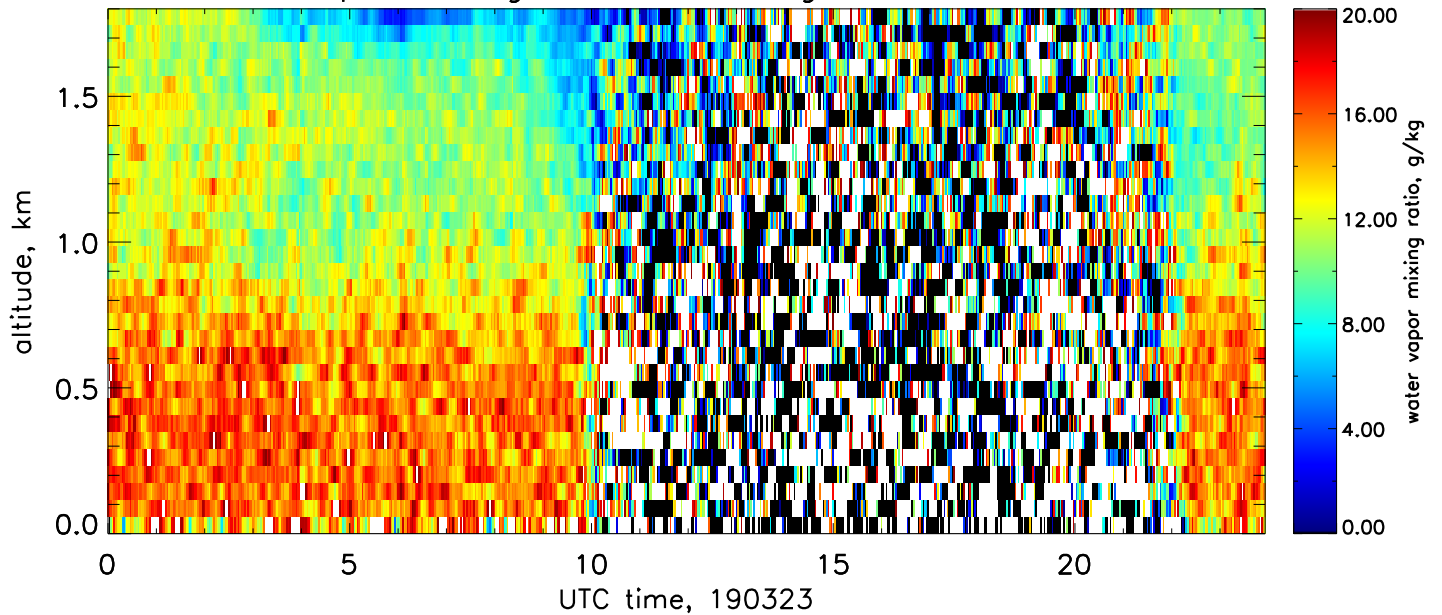
Water vapor mixing ratio, FAR-range, res.: 10min., 60-600m



Water vapor mixing ratio, FAR-range, res.: 10min., 60m

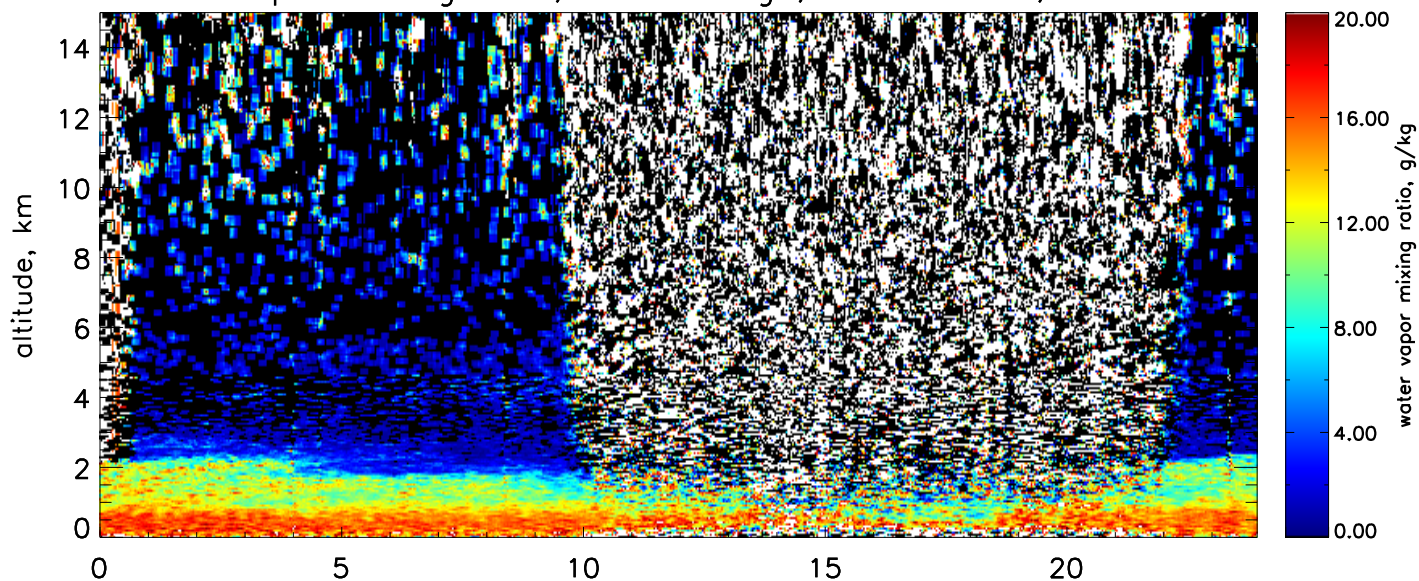


Water vapor mixing ratio, FAR-range, res.: 10min., 60m

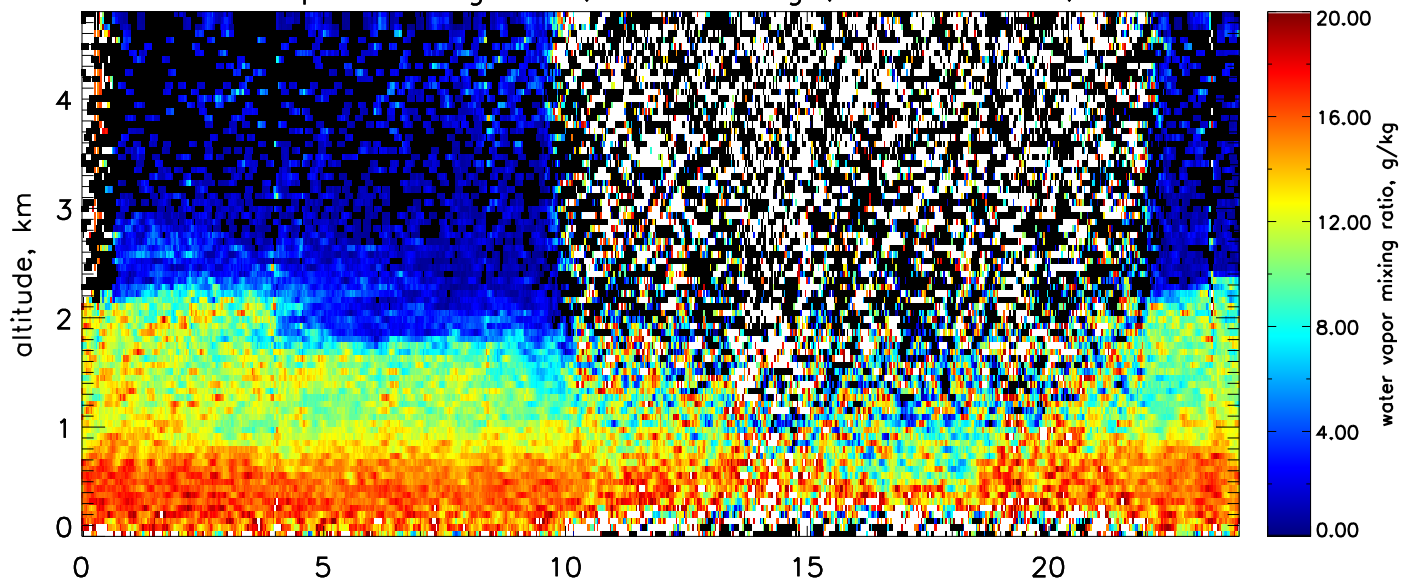




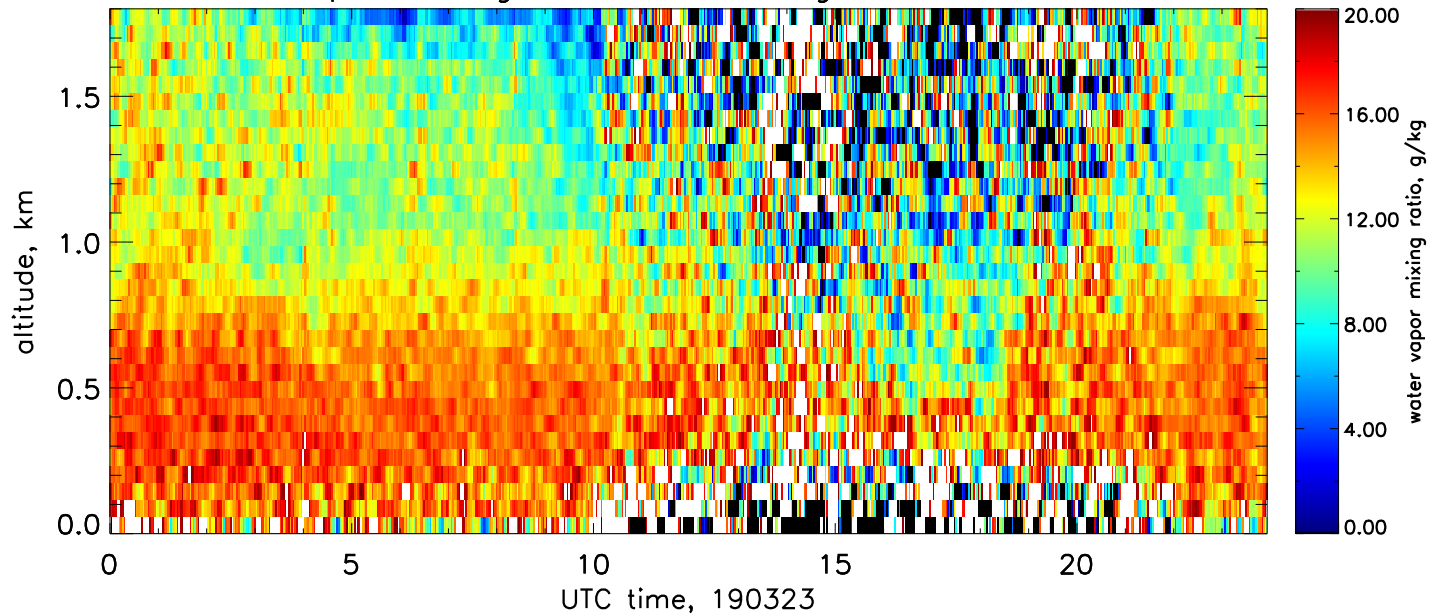
Water vapor mixing ratio, NEAR-range, res.: 10min., 60-600m



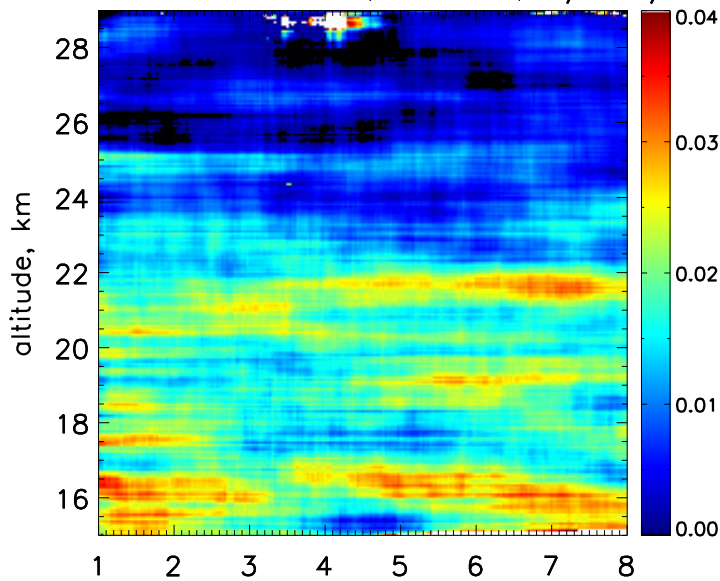
Water vapor mixing ratio, NEAR-range, res.: 10min., 60m



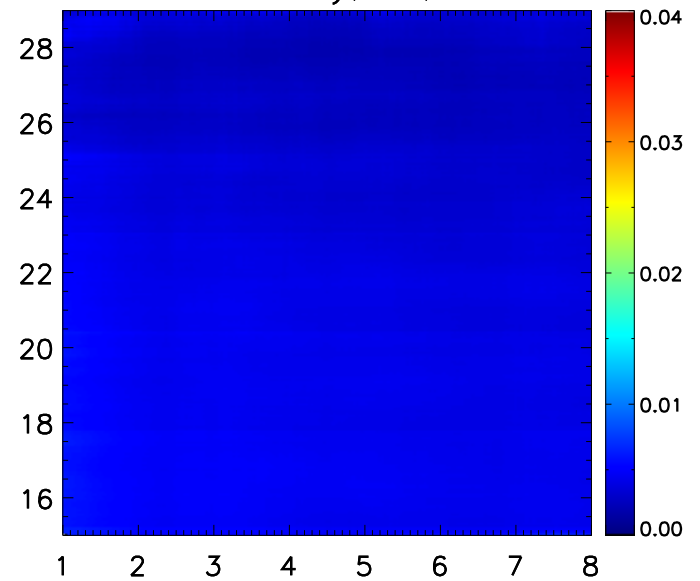
Water vapor mixing ratio, NEAR-range, res.: 10min., 60m



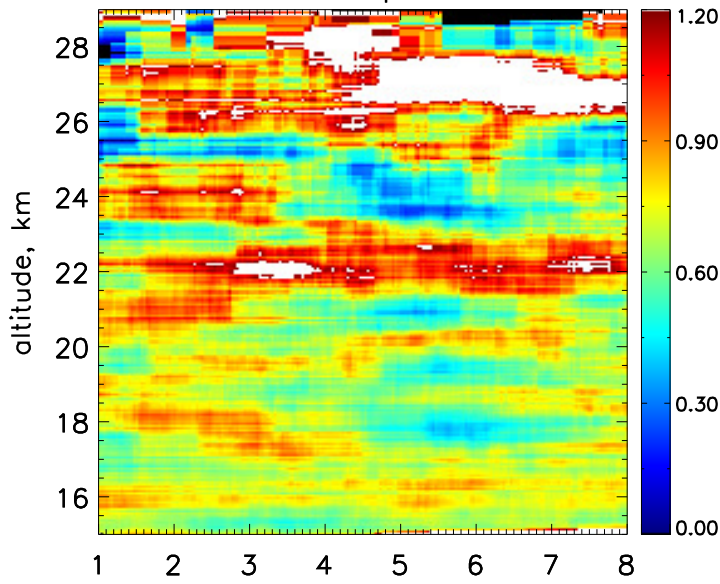
Particle backscatter, 532nm, 1/Mm/sr



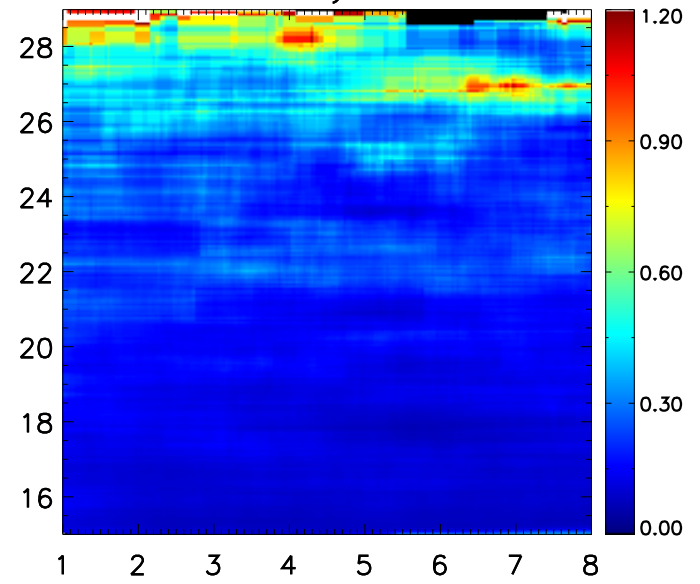
statistical accuracy, 3h, 1.2-2.4km



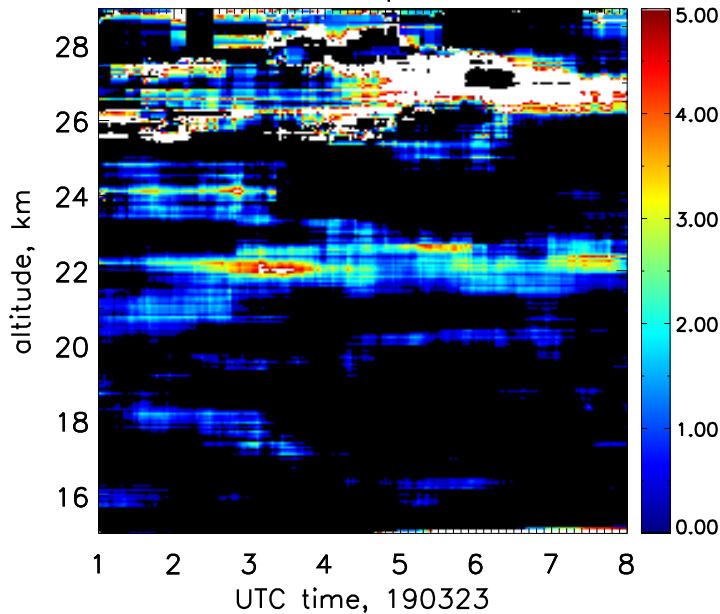
Volume linear depolarization, %



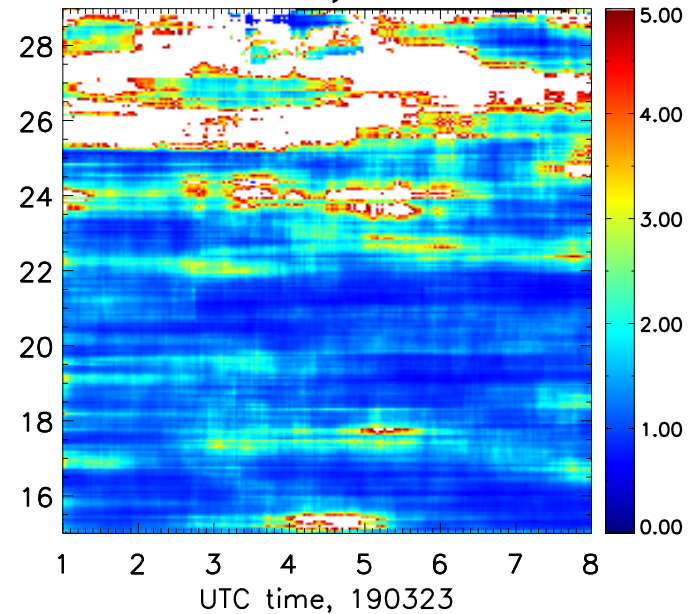
statistical accuracy, 3h, 1.2-2.4km



Particle linear depolarization, %

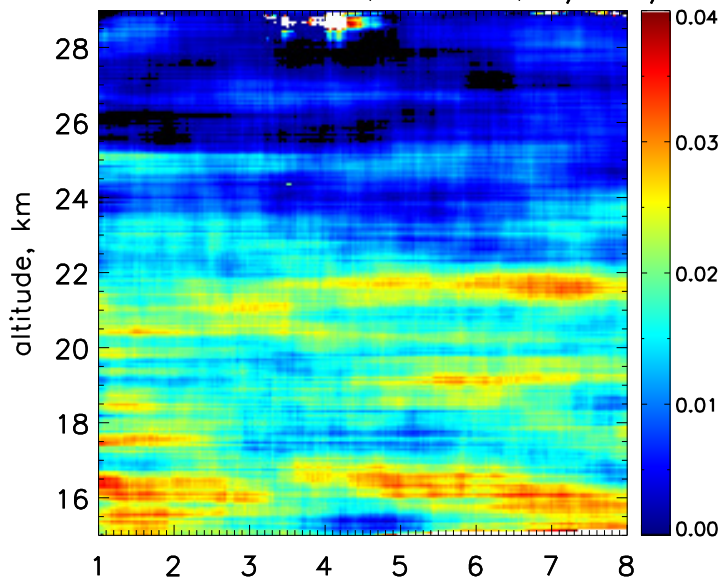


statistical accuracy, 3h, 1.2-2.4km

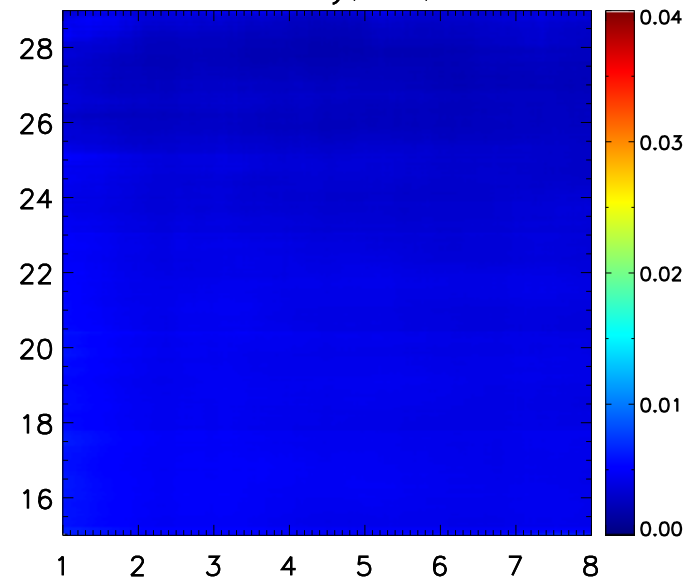




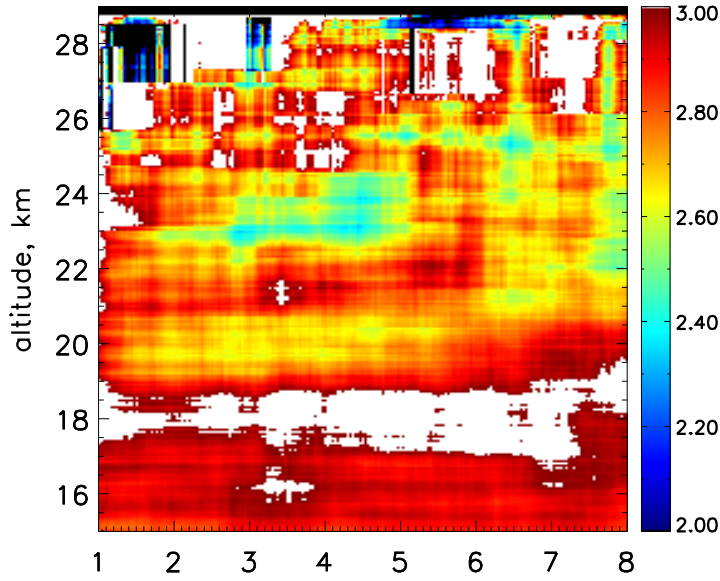
Particle backscatter, 532nm, 1/Mm/sr



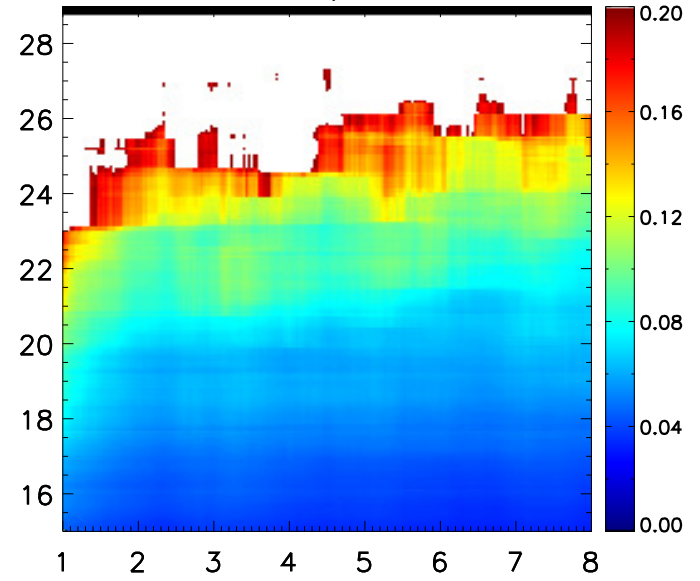
statistical accuracy, 3h, 1.2–2.4km



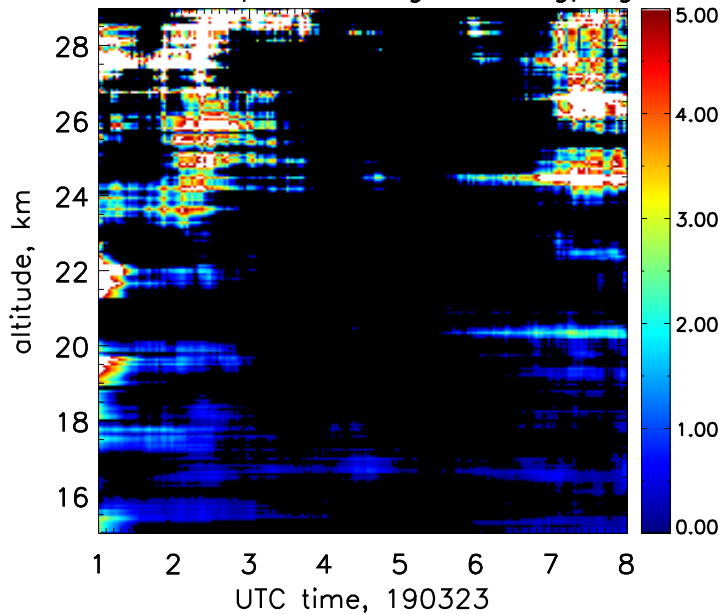
PRRS ratio, 532nm



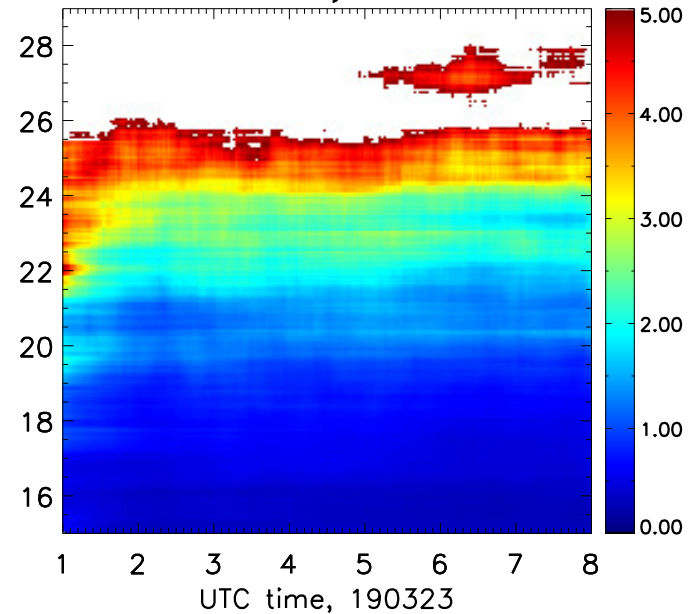
statistical accuracy, 3h, 1.2–2.4km



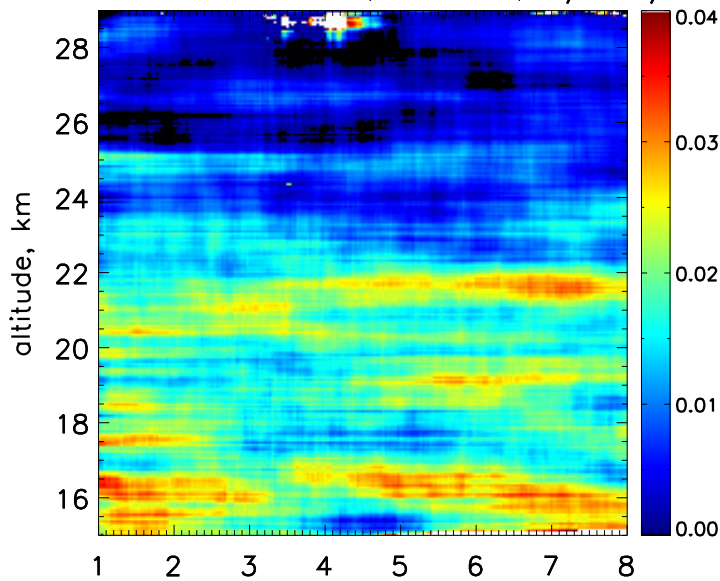
Water vapor mixing ratio, g/kg



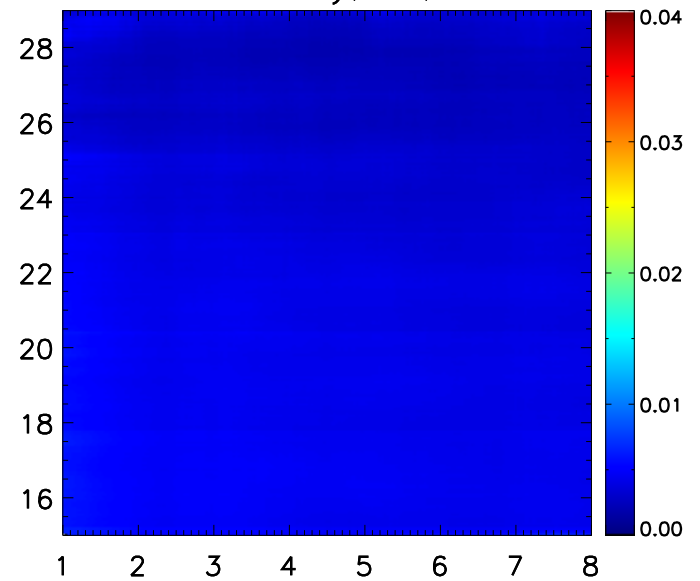
statistical accuracy, 3h, 1.2–2.4km



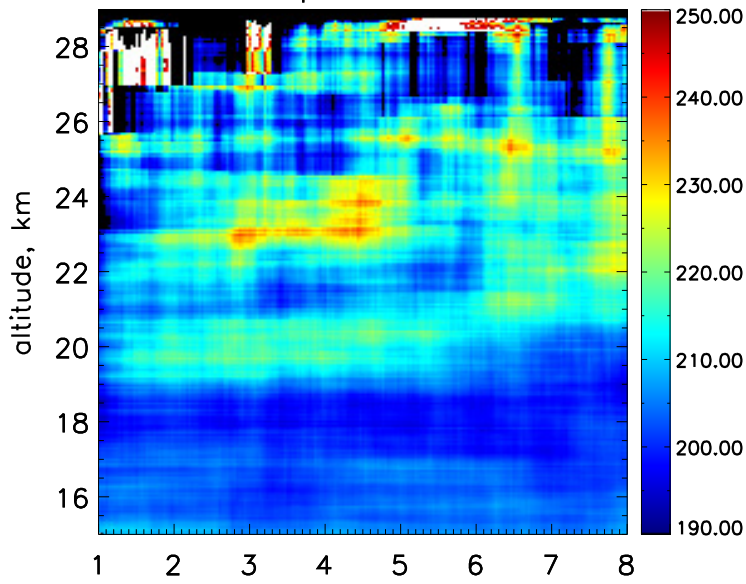
Particle backscatter, 532nm, 1/Mm/sr



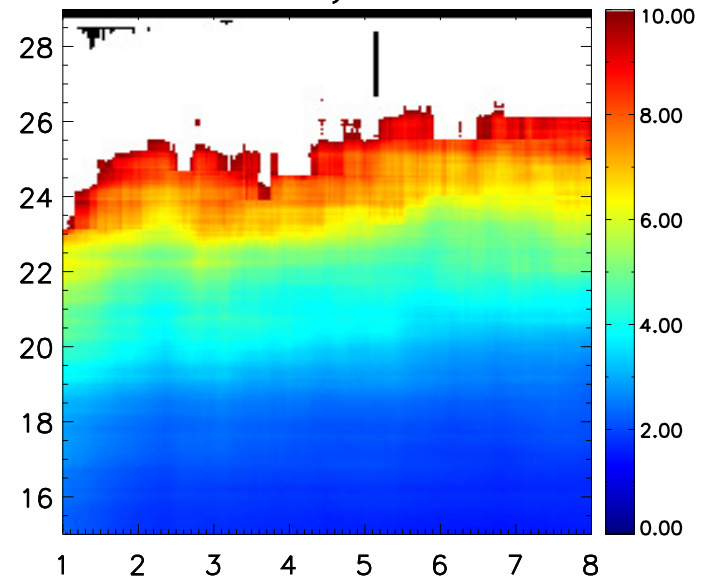
statistical accuracy, 3h, 1.2-2.4km



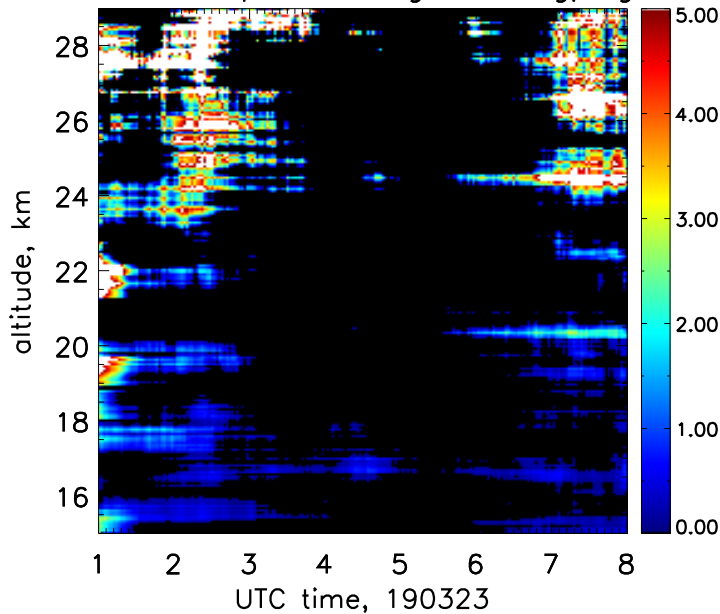
Temperature, K



statistical accuracy, 3h, 1.2-2.4km



Water vapor mixing ratio, g/kg



statistical accuracy, 3h, 1.2-2.4km

