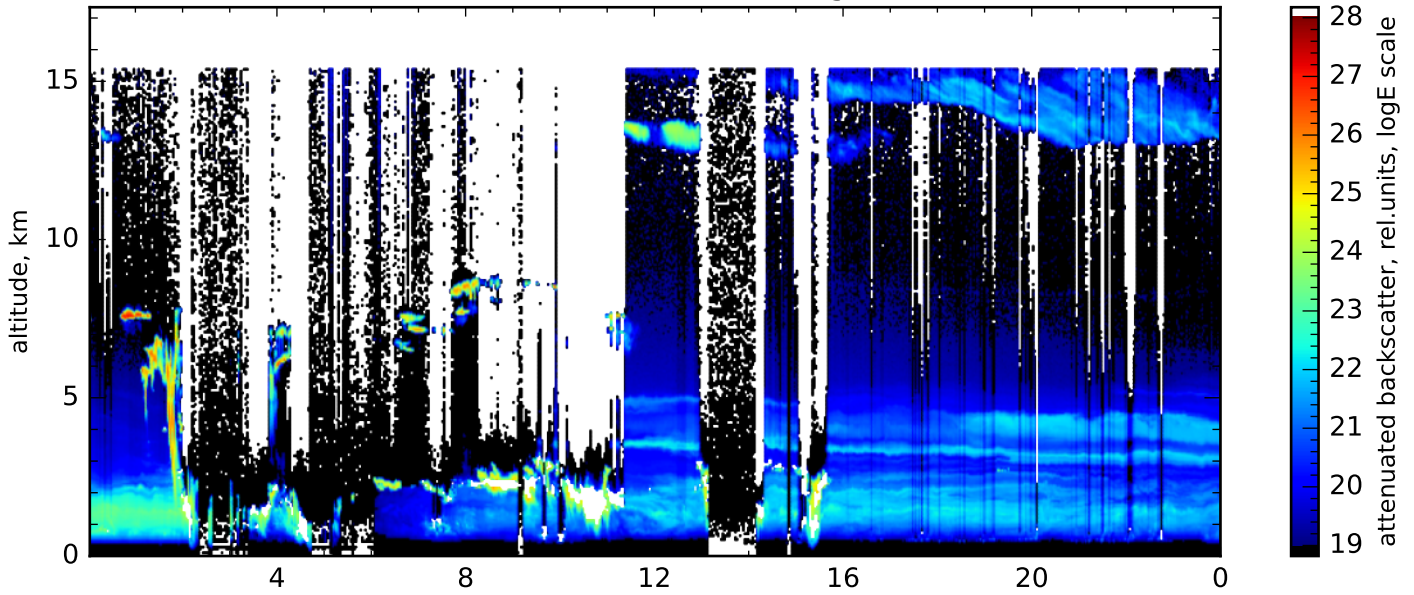
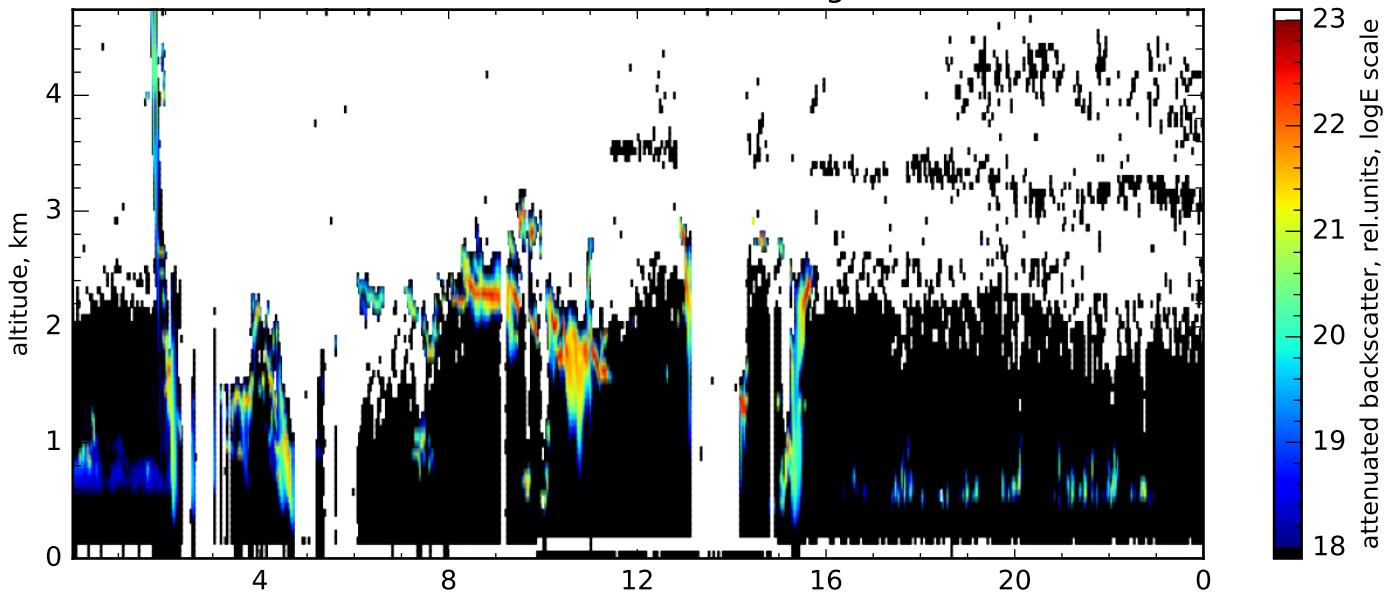


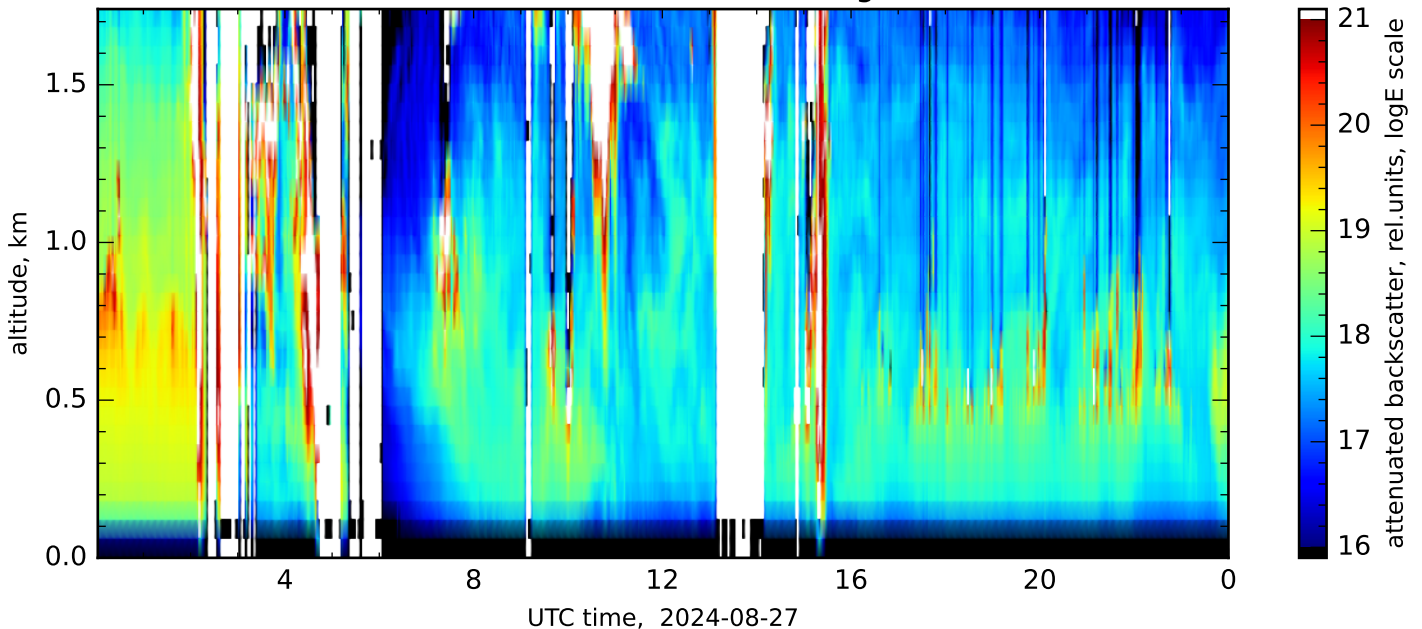
attenuated backscatter, 1064nm, far range, res.: 120s, 60m



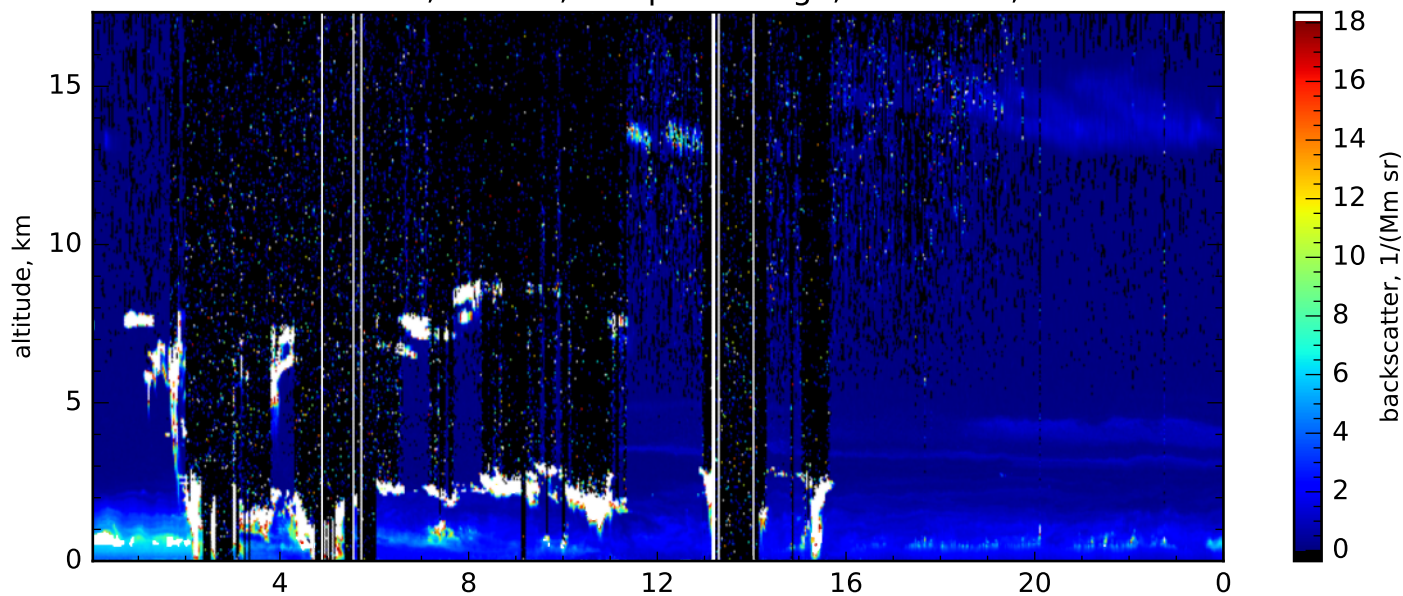
attenuated backscatter, 1064nm, near range, res.: 120s, 60m



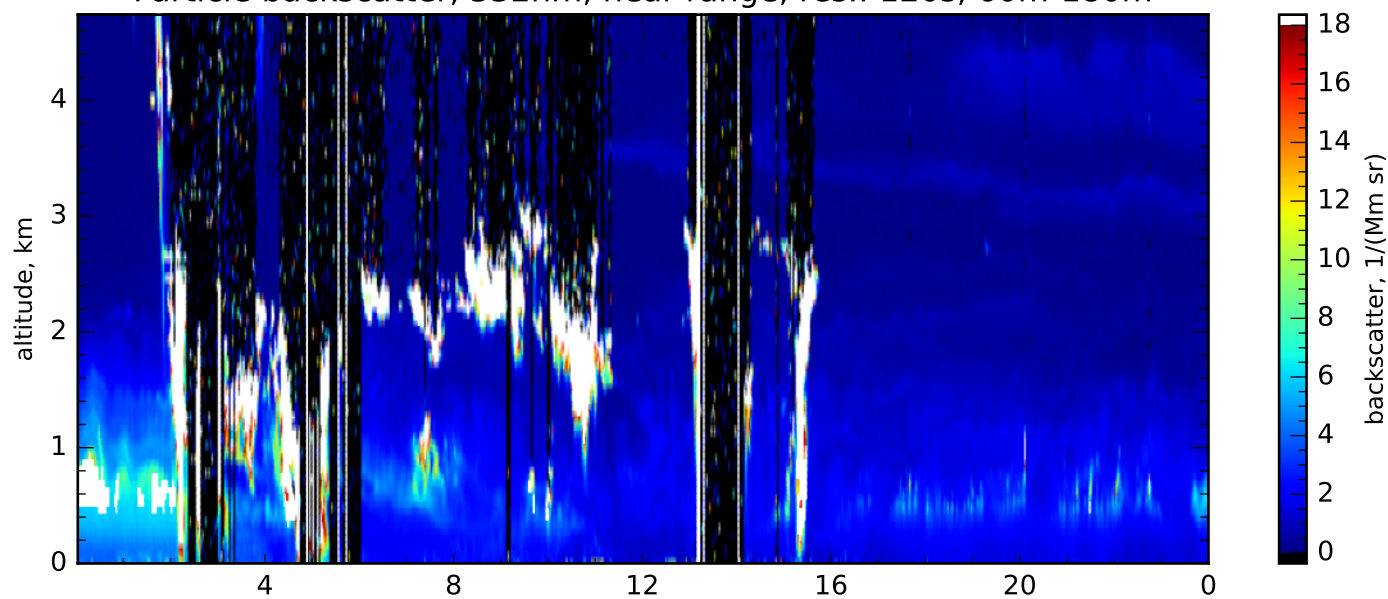
attenuated backscatter, 1064nm, close range, res.: 120s, 60m



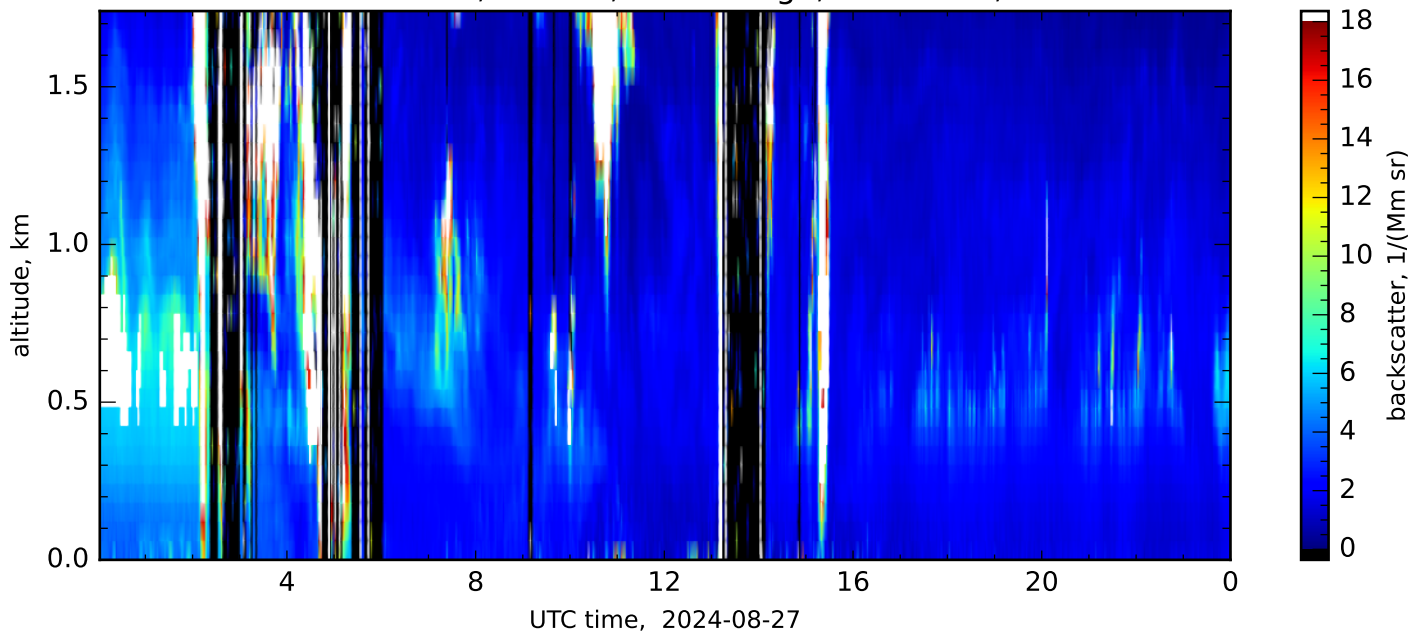
Particle backscatter, 532nm, complete range, res.: 120s, 60m-660m



Particle backscatter, 532nm, near range, res.: 120s, 60m-180m

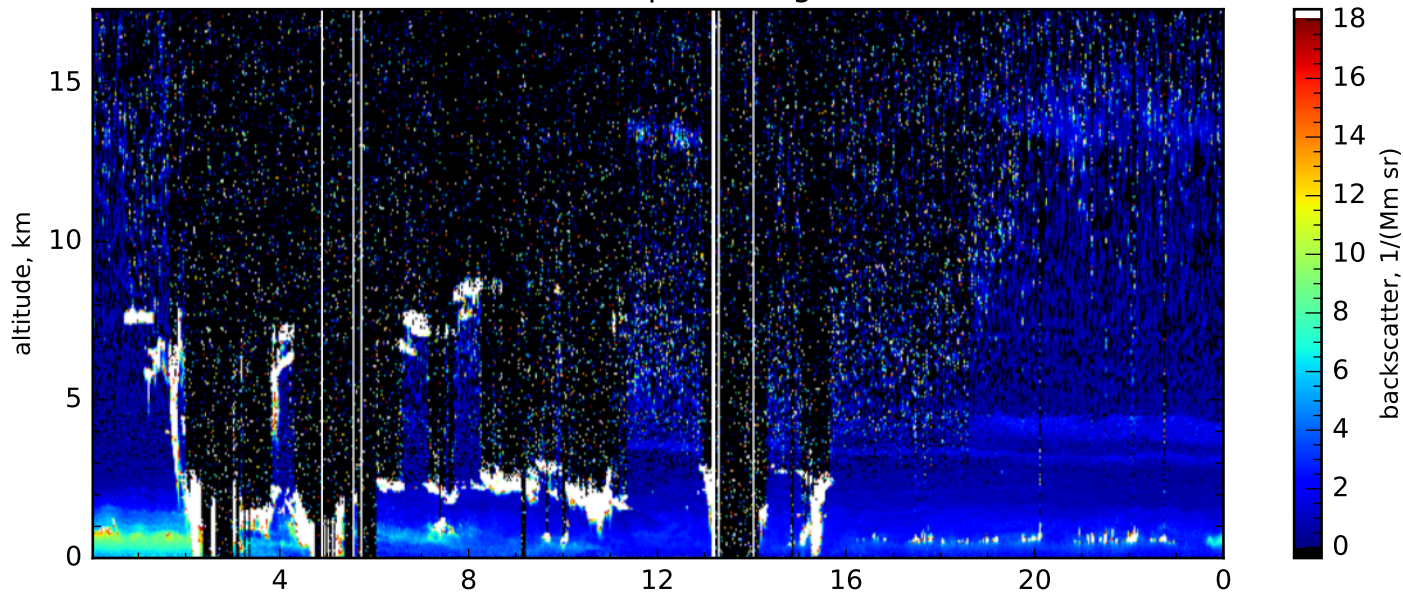


Particle backscatter, 532nm, close range, res.: 120s, 60m-60m

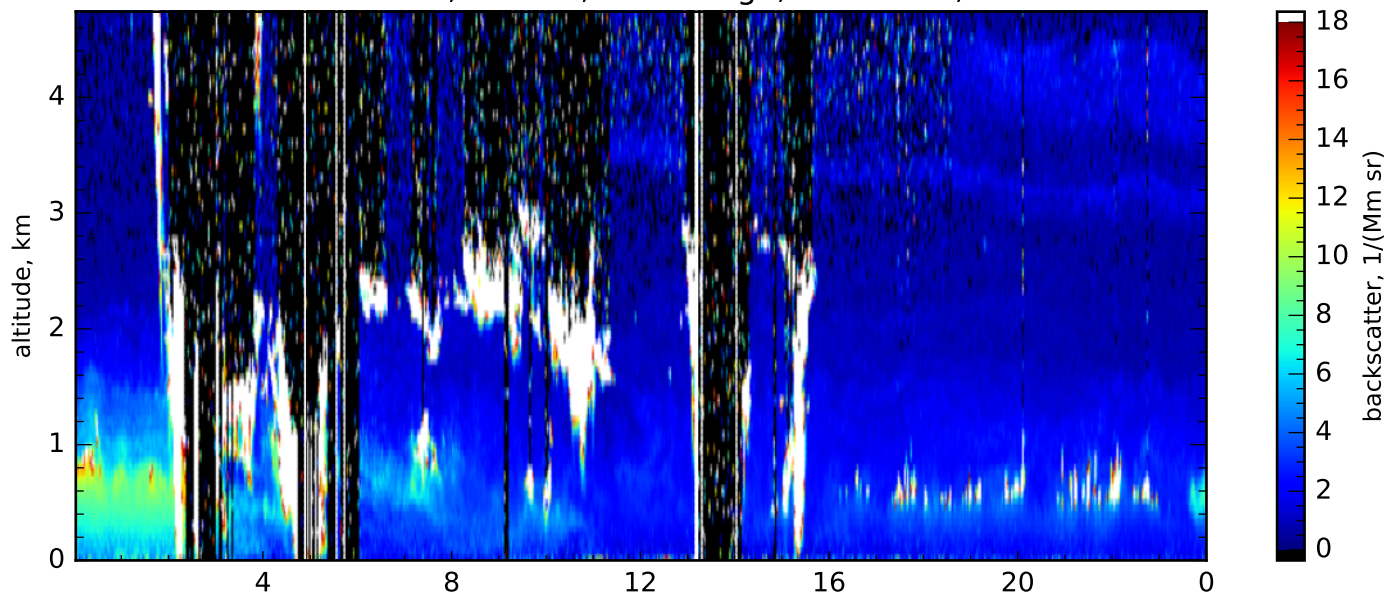




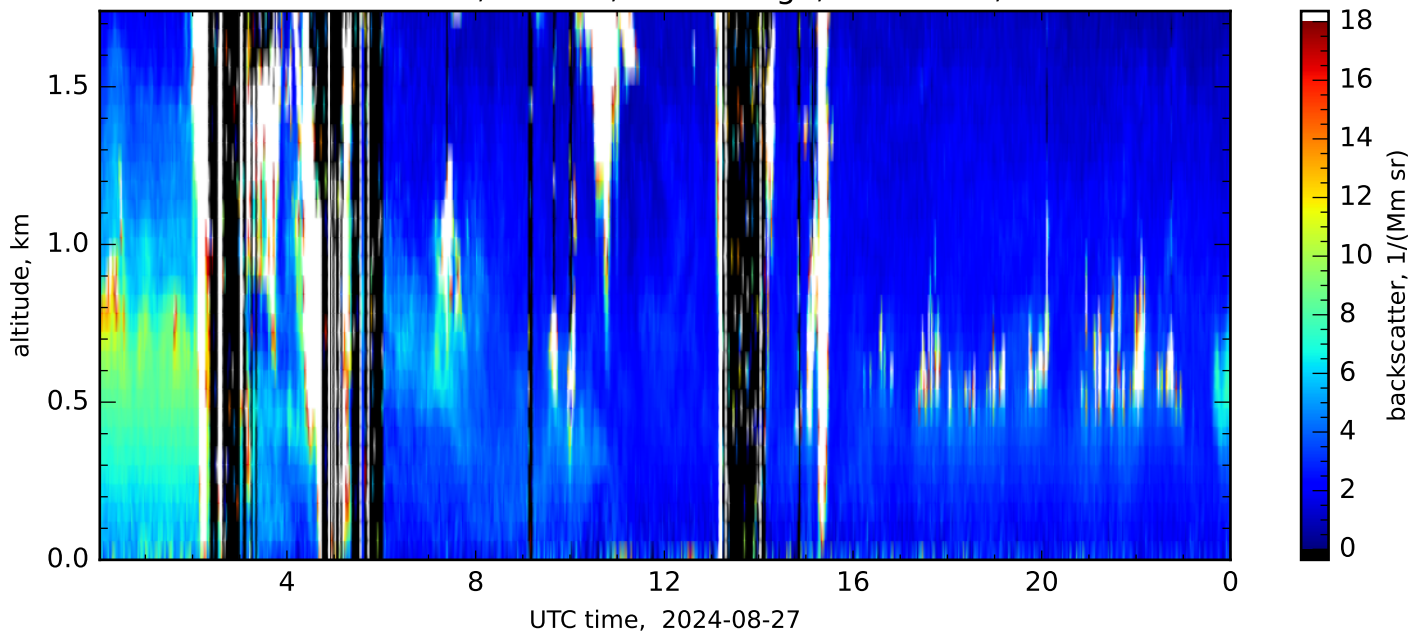
Particle backscatter, 355nm, complete range, res.: 120s, 60m-660m



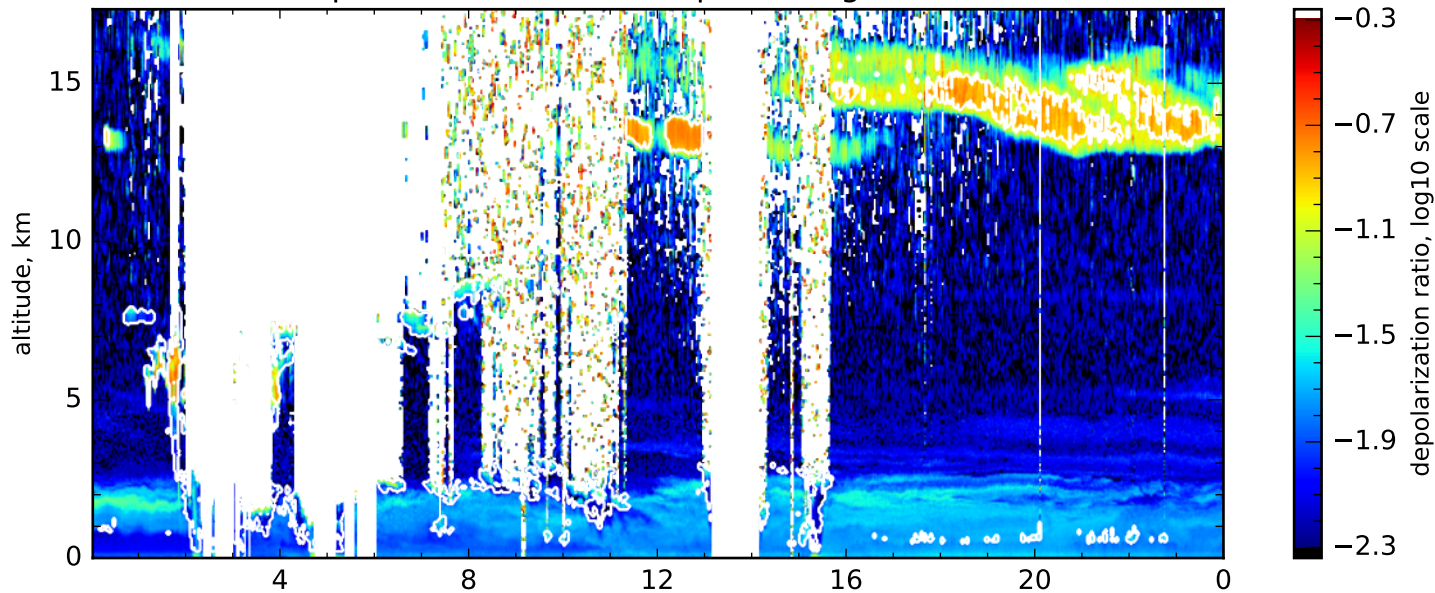
Particle backscatter, 355nm, near range, res.: 120s, 60m-180m



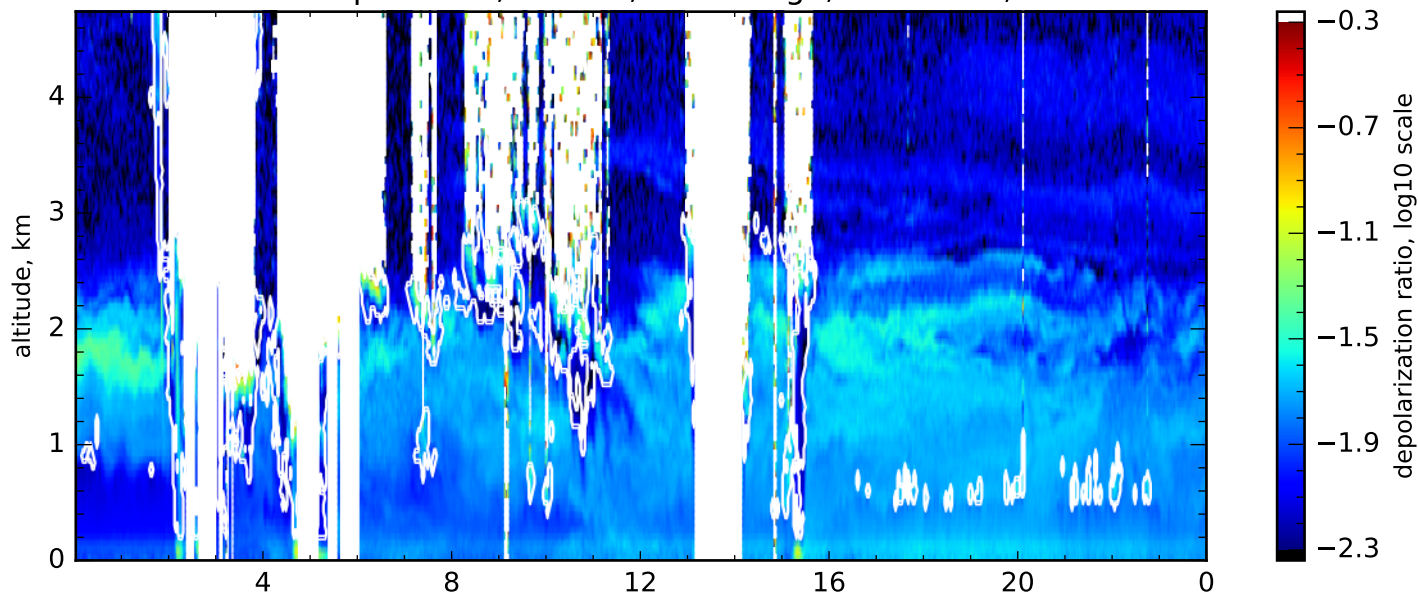
Particle backscatter, 355nm, close range, res.: 120s, 60m-60m



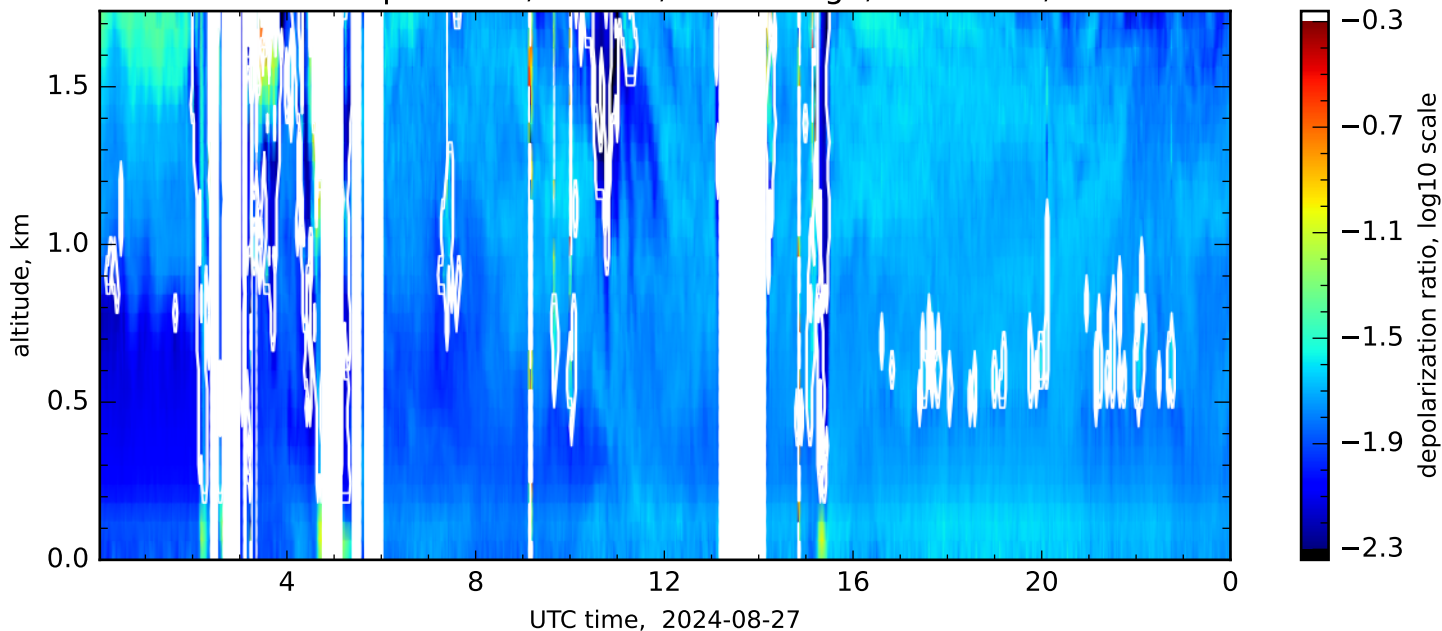
Volume linear depol. ratio, 532nm, complete range, res.: 120s, 60m-660m



Volume linear depol. ratio, 532nm, near range, res.: 120s, 60m-180m

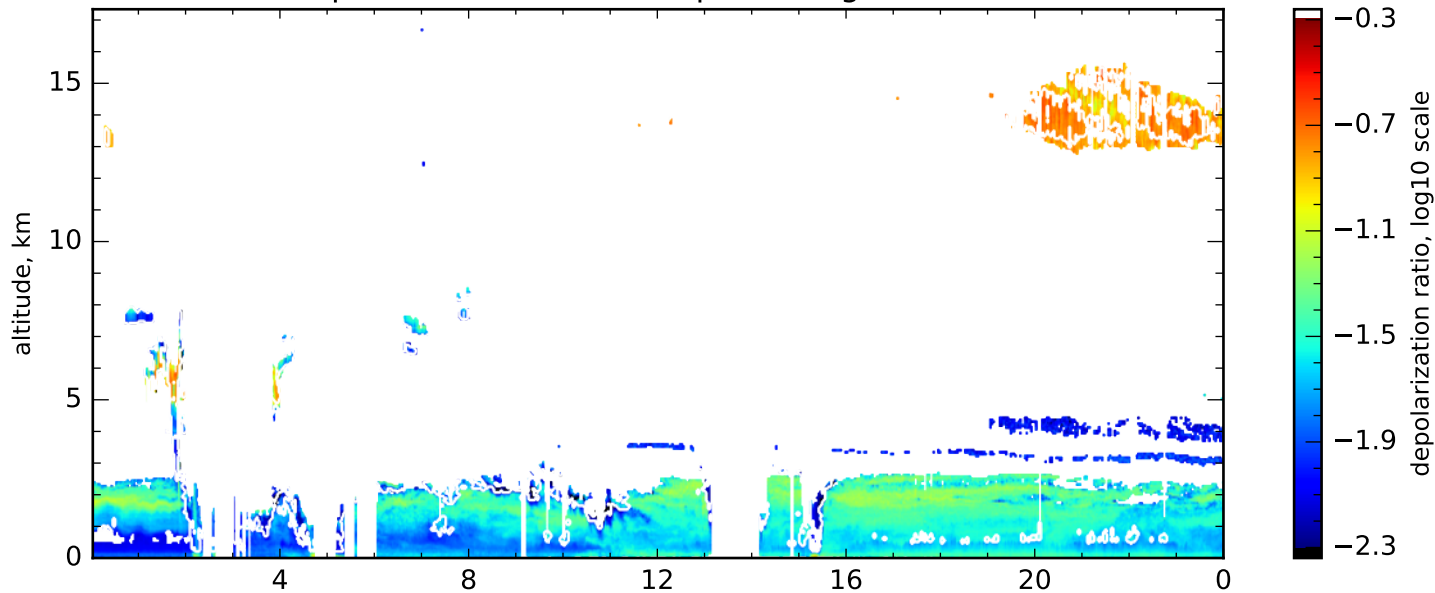


Volume linear depol. ratio, 532nm, close range, res.: 120s, 60m-60m

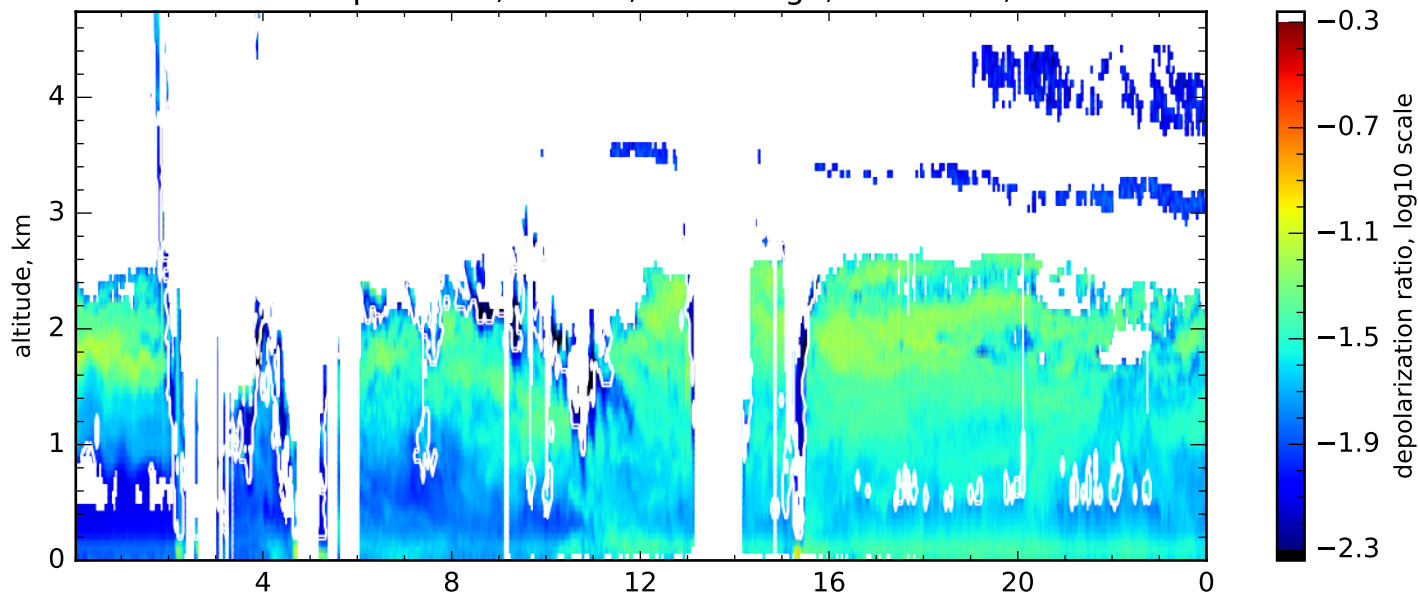




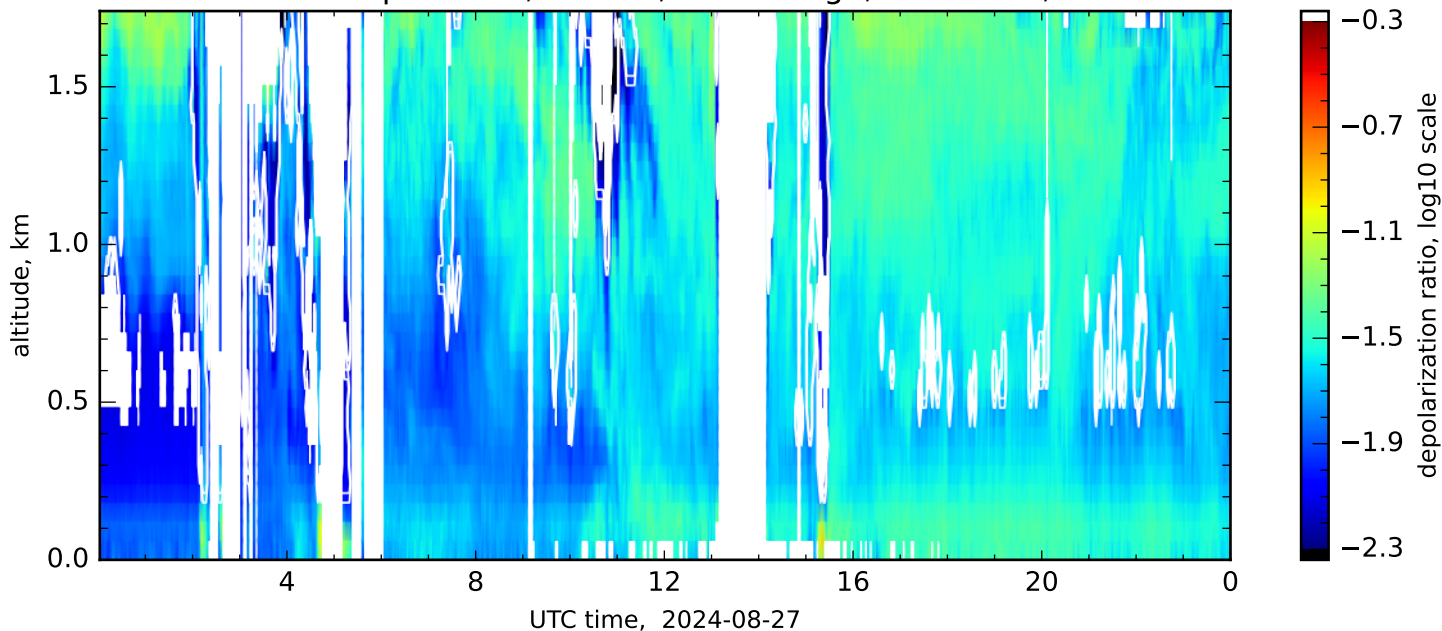
Particle linear depol. ratio, 532nm, complete range, res.: 120s, 60m-660m



Particle linear depol. ratio, 532nm, near range, res.: 120s, 60m-180m

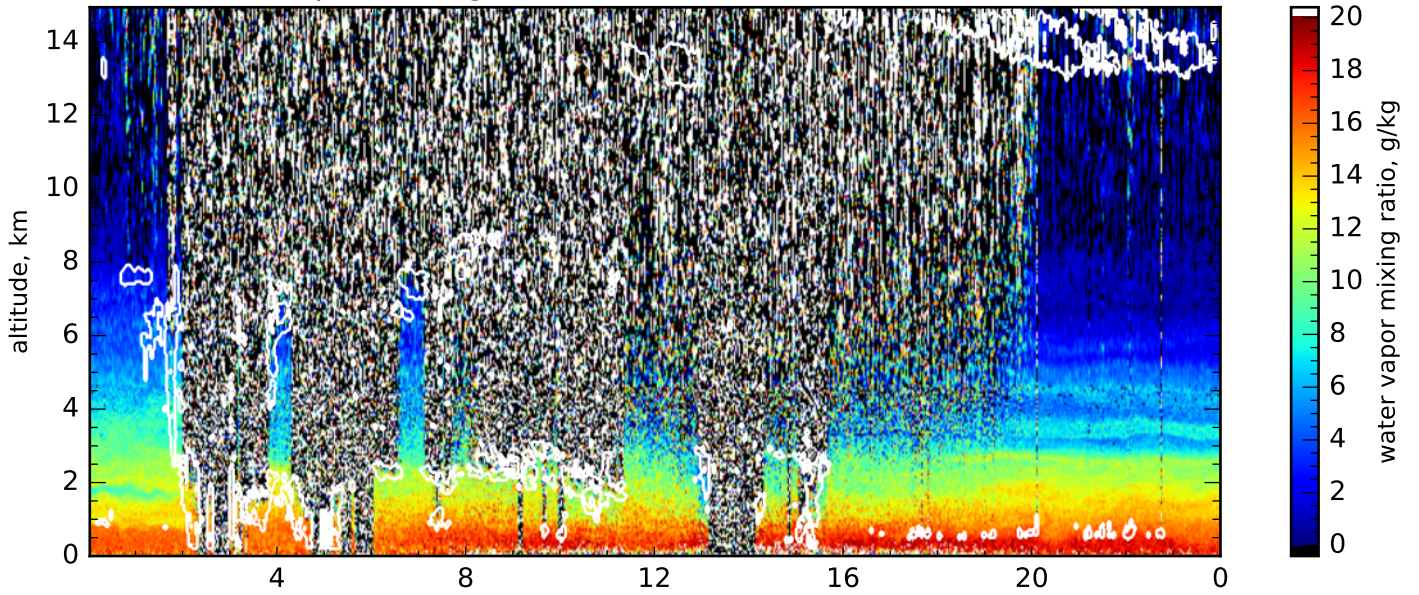


Particle linear depol. ratio, 532nm, close range, res.: 120s, 60m-60m

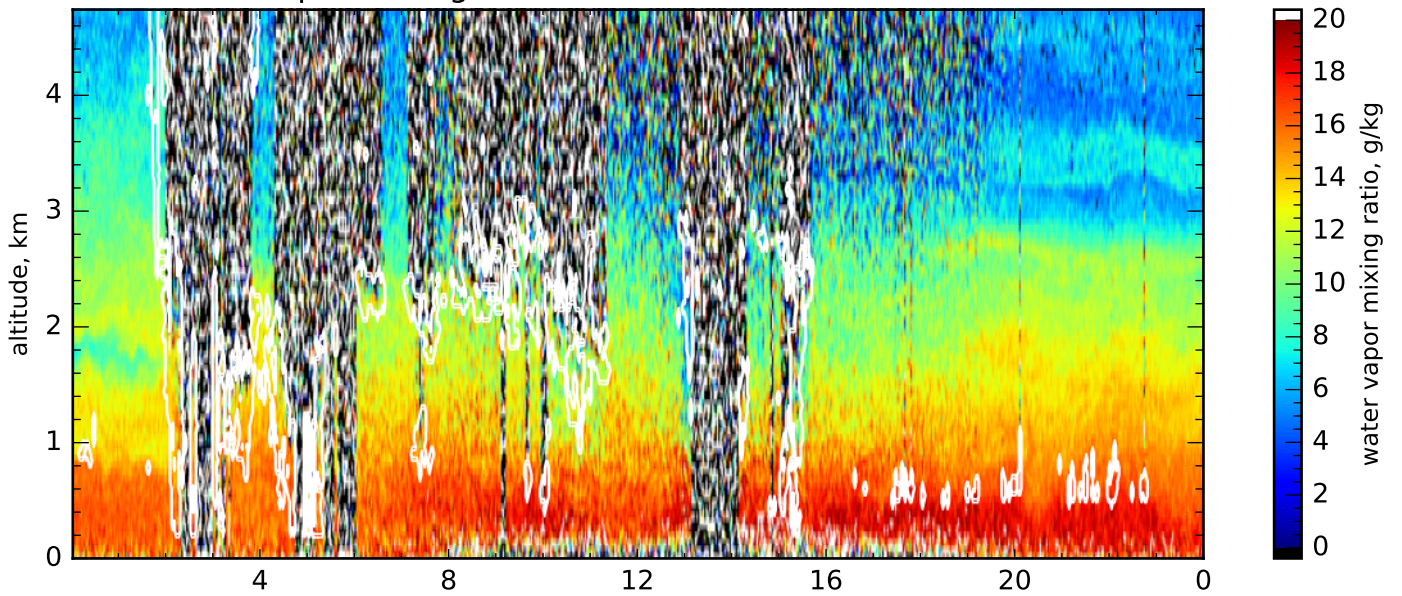




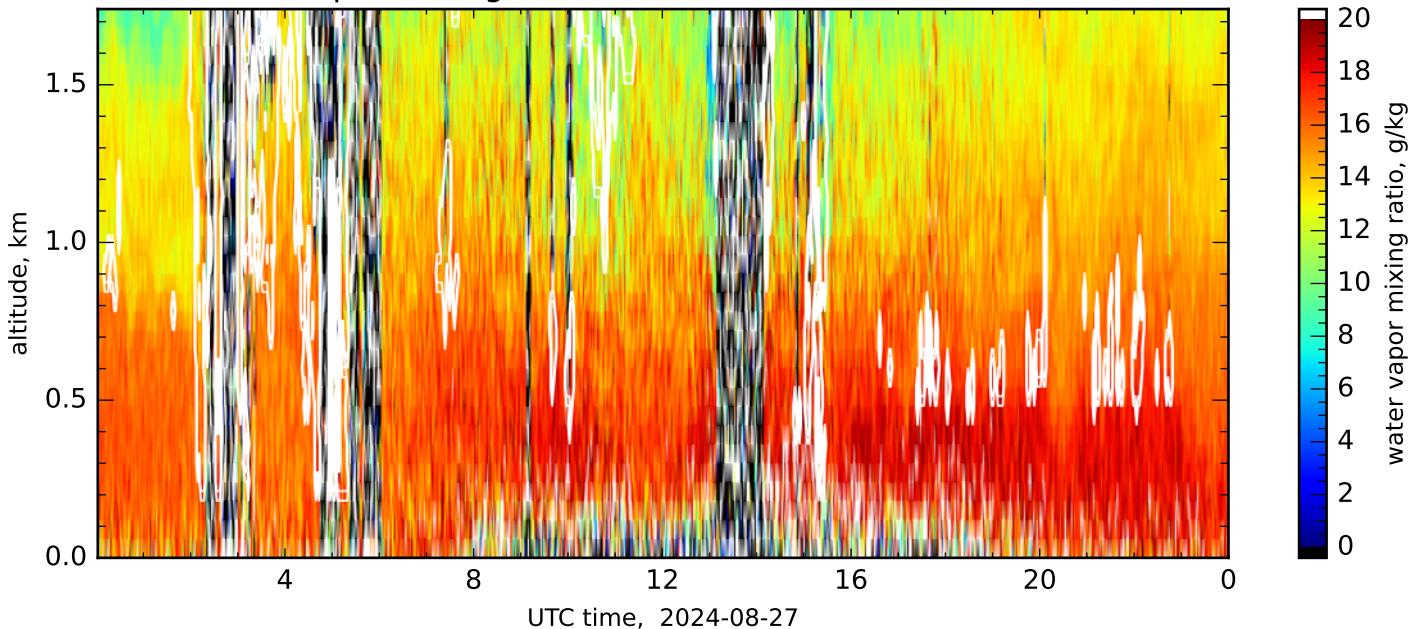
Water vapor mixing ratio, FAR+NEAR, res.: 120s, 60m-540m



Water vapor mixing ratio, FAR+NEAR, res.: 120s, 60m-180m

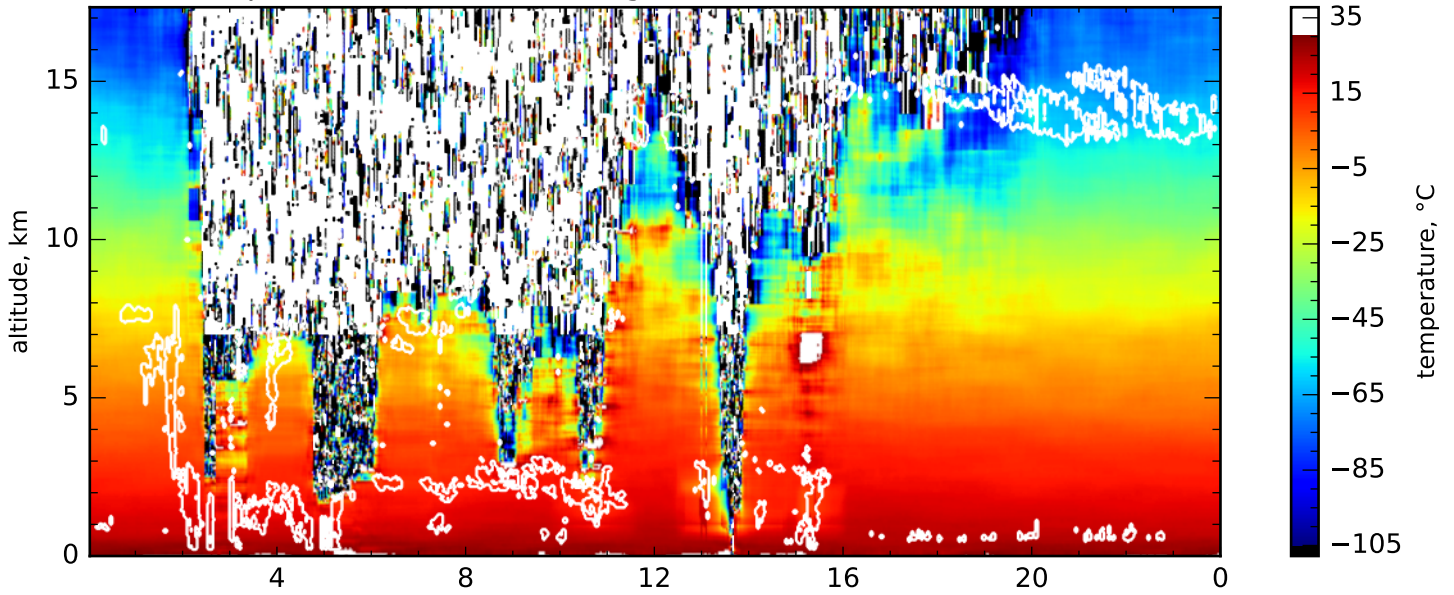


Water vapor mixing ratio, FAR+NEAR, res.: 120s, 60m-60m

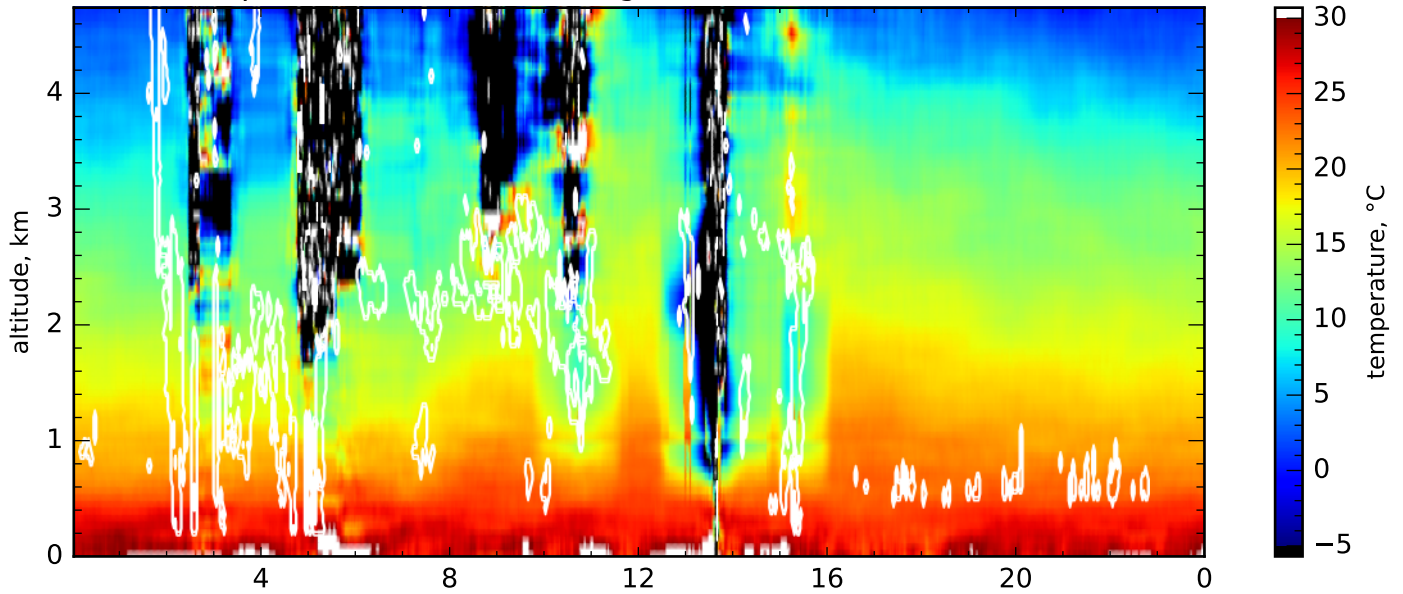




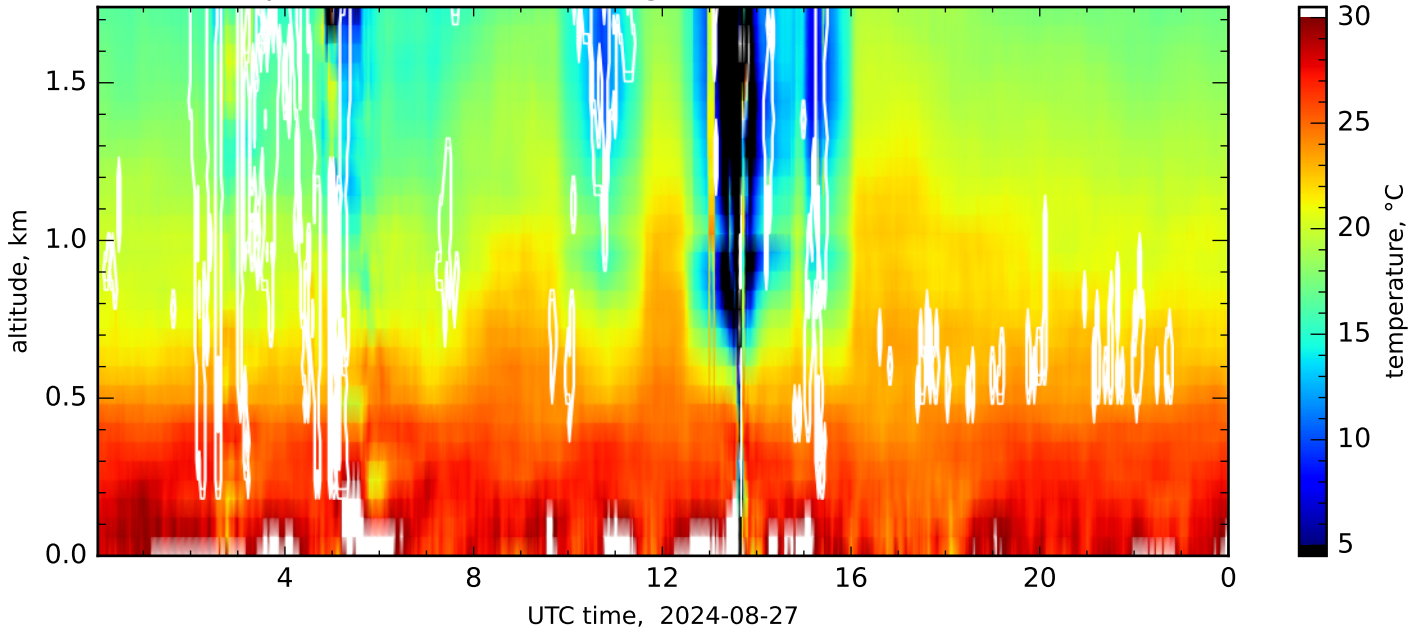
Temperature, 355&532nm, glue, res.: 3480s, 120m-1500m



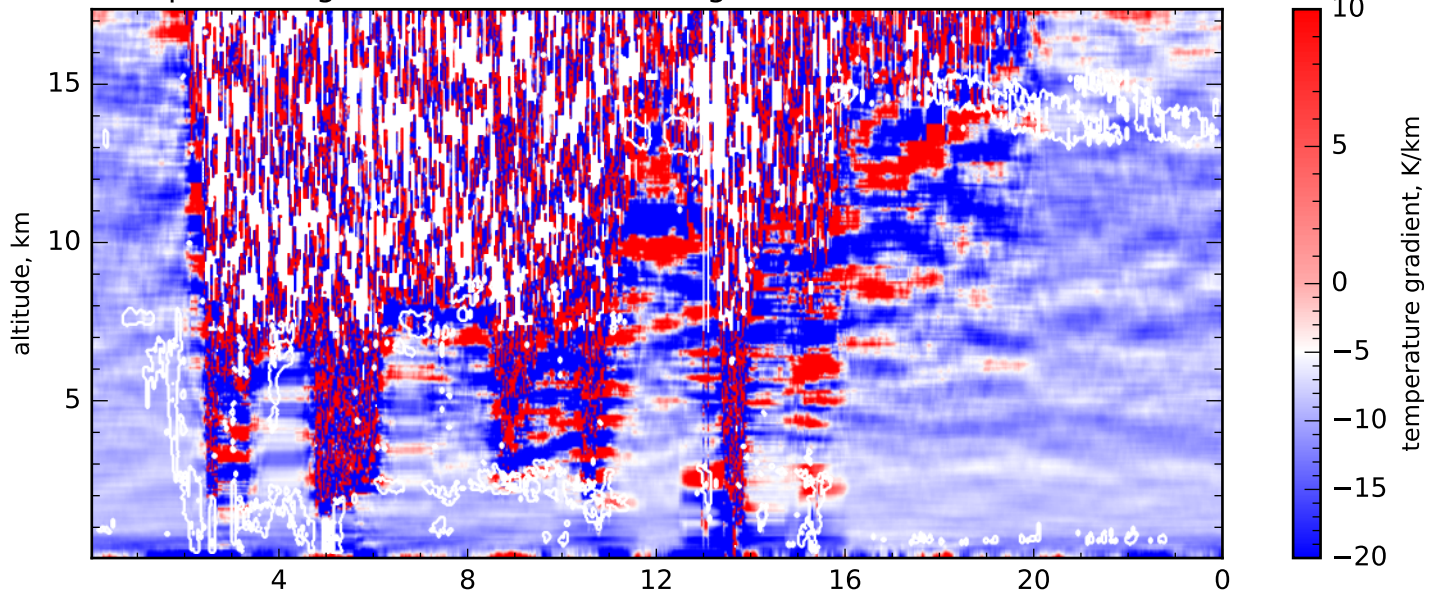
Temperature, 355&532nm, glue, res.: 3480s, 120m-540m



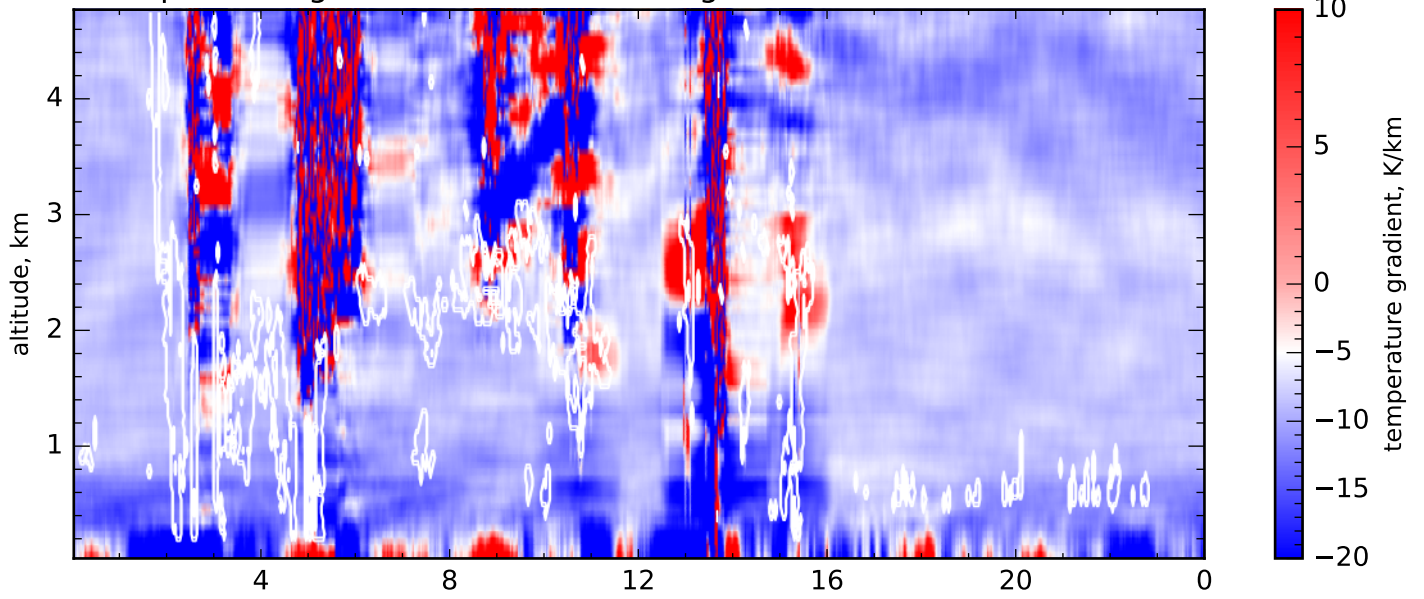
Temperature, 355&532nm, glue, res.: 3480s, 120m-300m



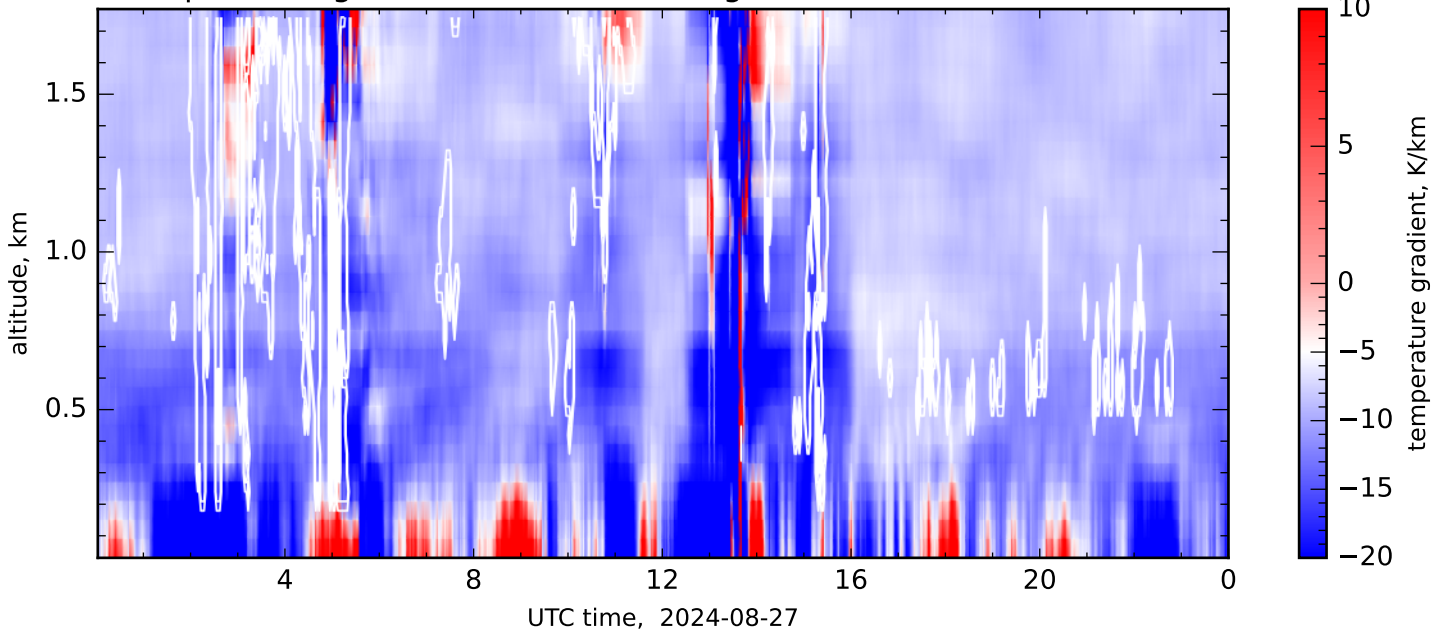
Temperature gradients, 355&532nm, glue, res.: 3480s, 120m-1500m



Temperature gradients, 355&532nm, glue, res.: 3480s, 120m-540m

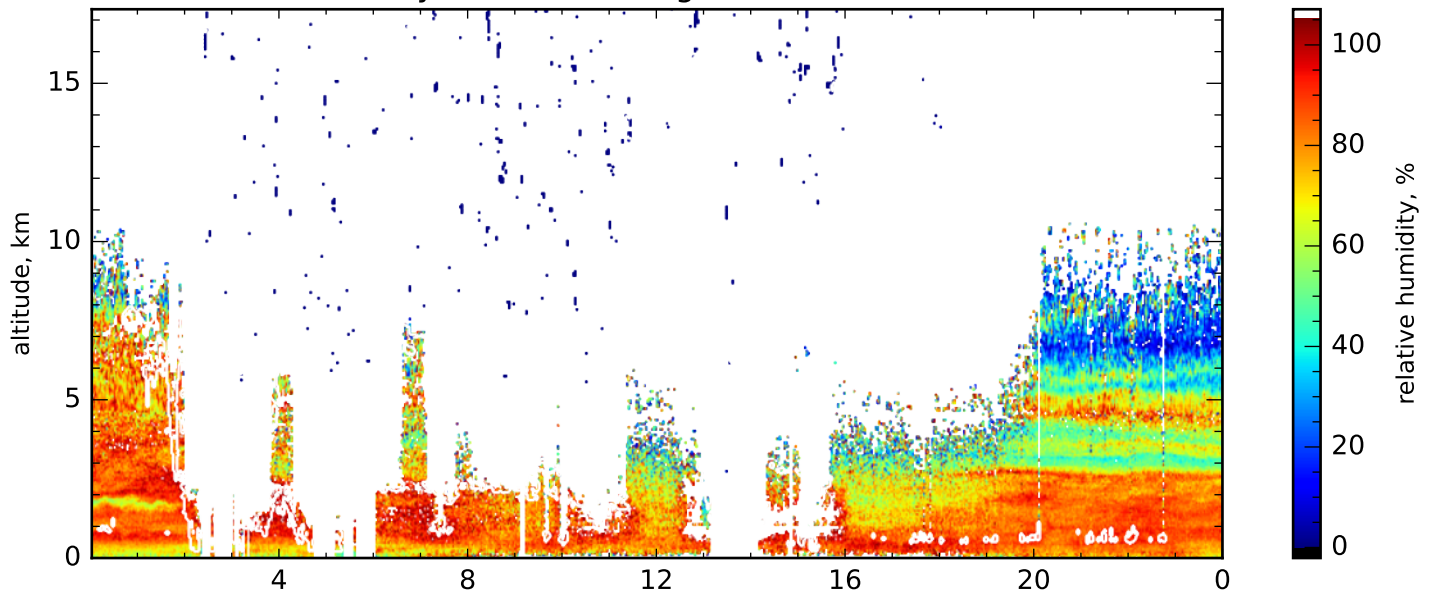


Temperature gradients, 355&532nm, glue, res.: 3480s, 120m-300m

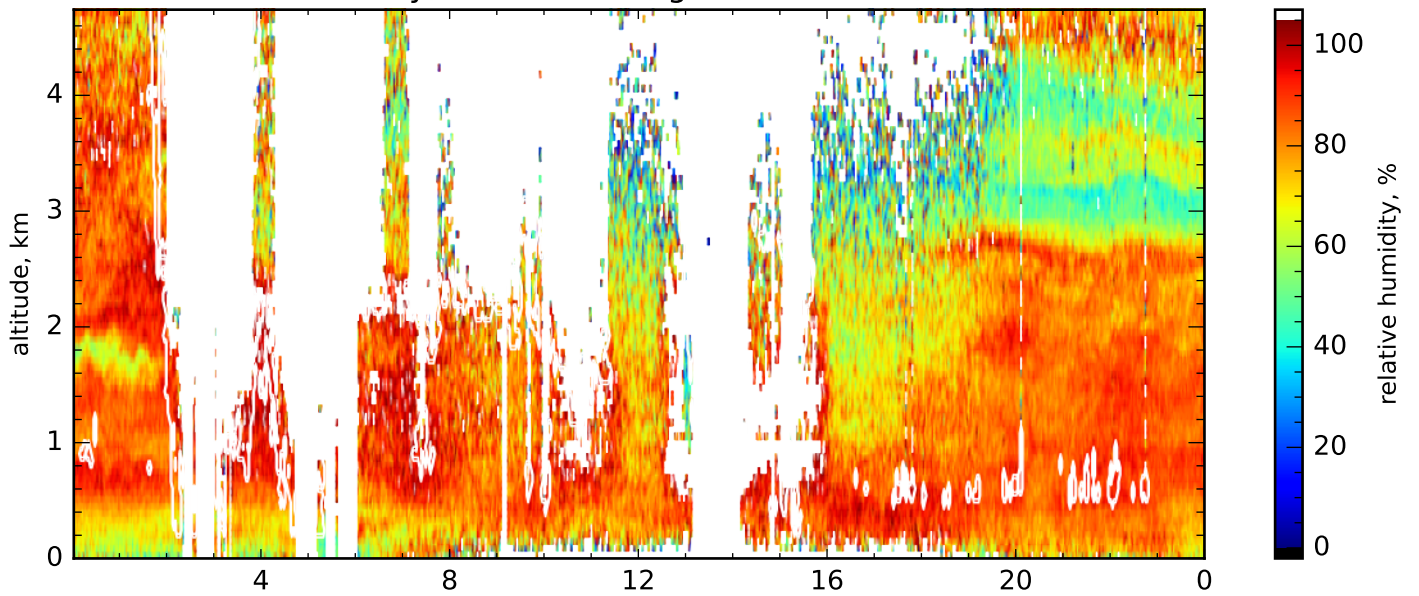




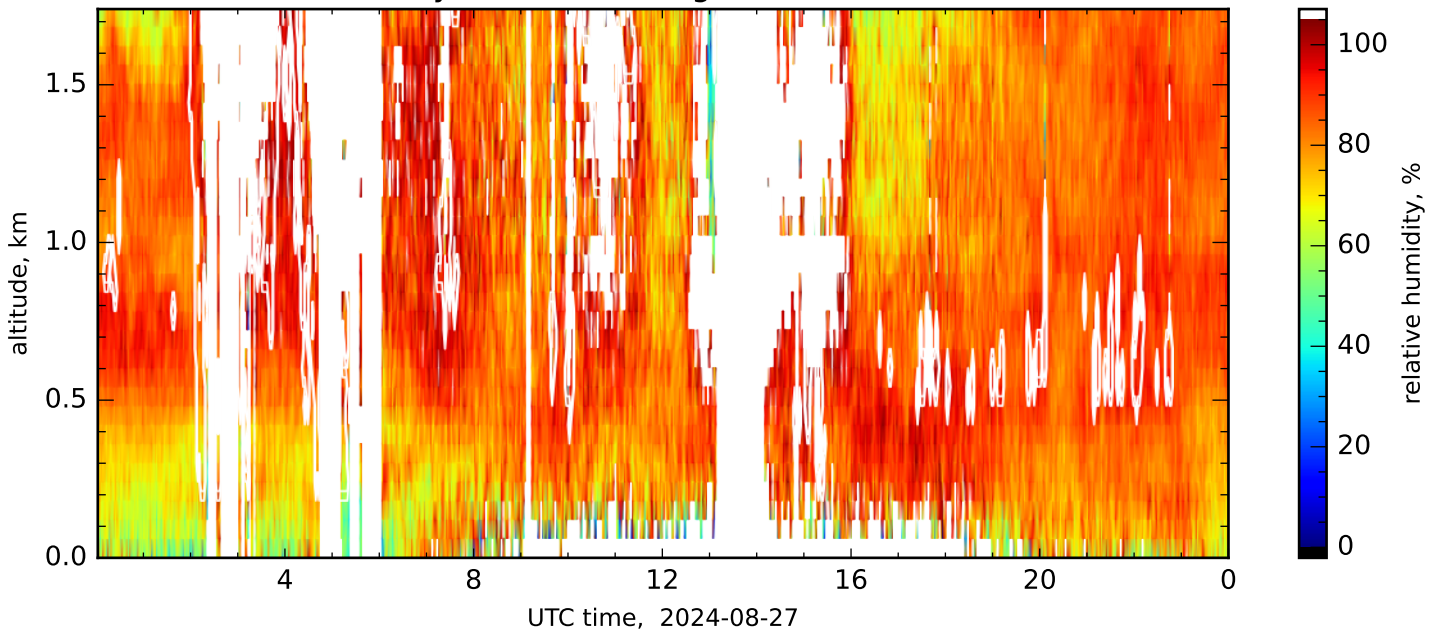
Relative humidity, 355&532nm, glue, res.: 120s, 120m-1500m



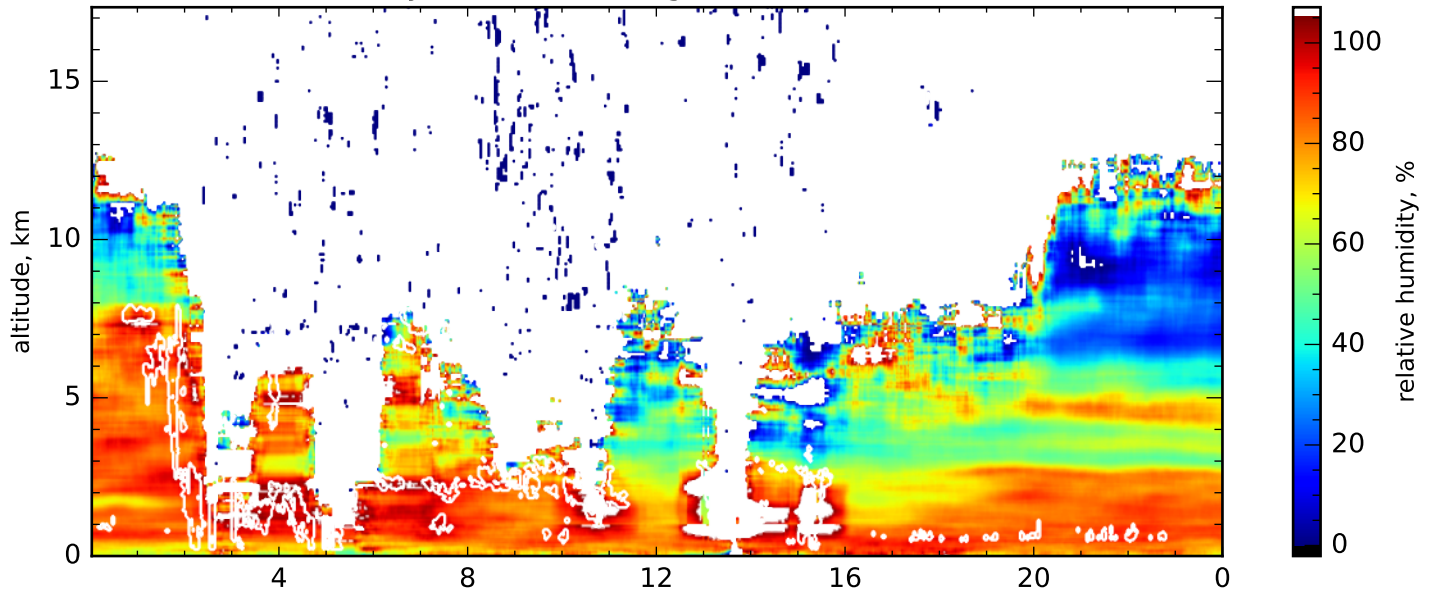
Relative humidity, 355&532nm, glue, res.: 120s, 120m-540m



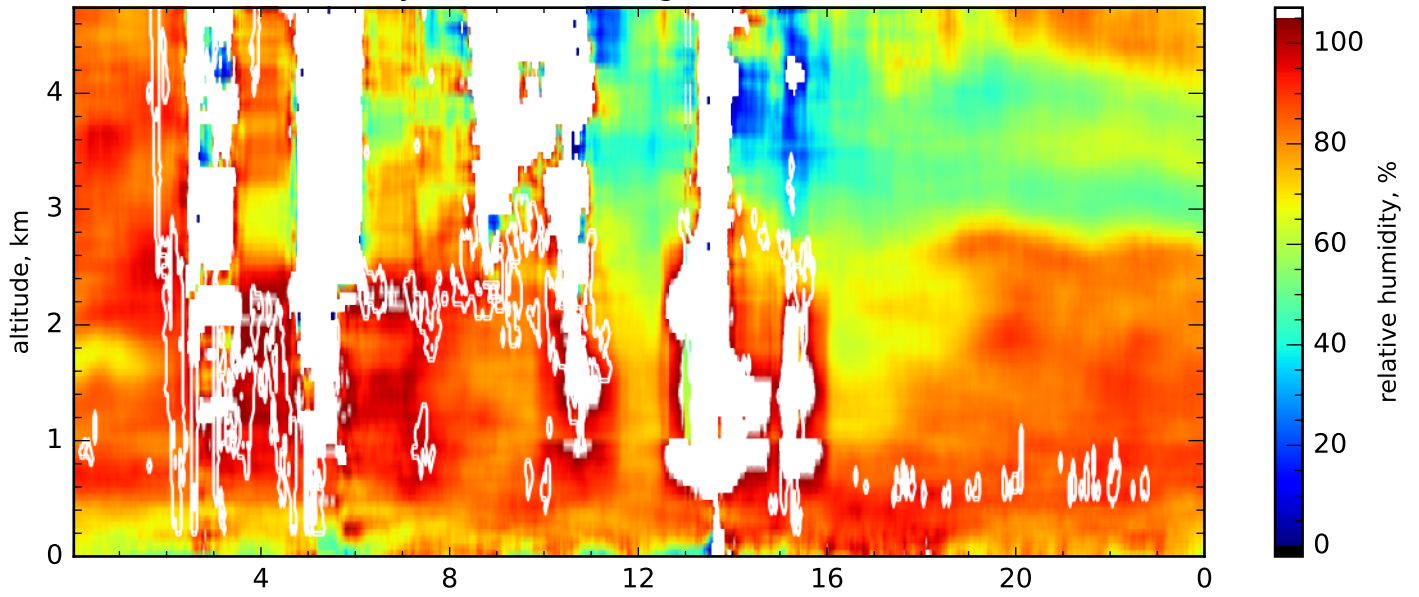
Relative humidity, 355&532nm, glue, res.: 120s, 120m-300m



Relative humidity, 355&532nm, glue, res.: 3480s, 120m-1500m



Relative humidity, 355&532nm, glue, res.: 3480s, 120m-540m



Relative humidity, 355&532nm, glue, res.: 3480s, 120m-300m

